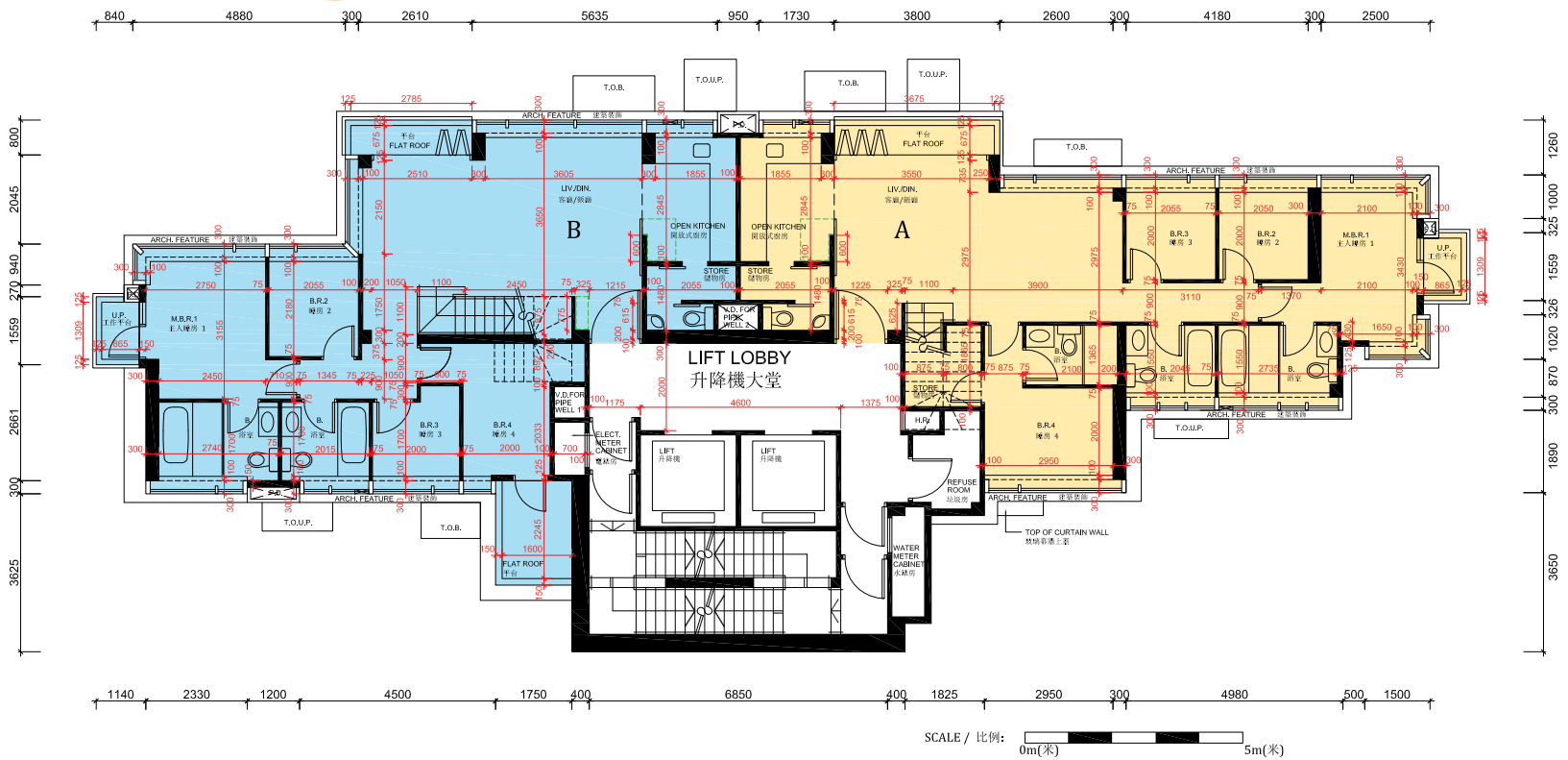


10 FLOOR PLANS OF RESIDENTIAL PROPERTIES IN THE DEVELOPMENT

發展項目的住宅物業的樓面平面圖

35/F Floor Plan 35樓平面圖



Each Residential Property 每個住宅物業	35/F 35樓	A	B
Floor to Floor Height (mm) 層與層之間的高度 (毫米)	35/F 35樓	3500	3500
Thickness of Floor Slab (excluding plaster) (mm) 樓板 (不包括灰泥) 的厚度 (毫米)	35/F 35樓	150, 175, 225	225

Notes: The dimensions in floor plans are all structural dimensions in millimeter.

備註：平面圖所列的數字為以毫米標示之建築結構尺寸。

The internal areas of the residential properties on the upper floors will generally be slightly larger than those on the lower floors because of the reducing thickness of the structural walls on the upper floors.

因住宅物業的較高樓層的結構牆的厚度遞減，較高樓層的內部面積，一般比較低樓層的內部面積稍大。

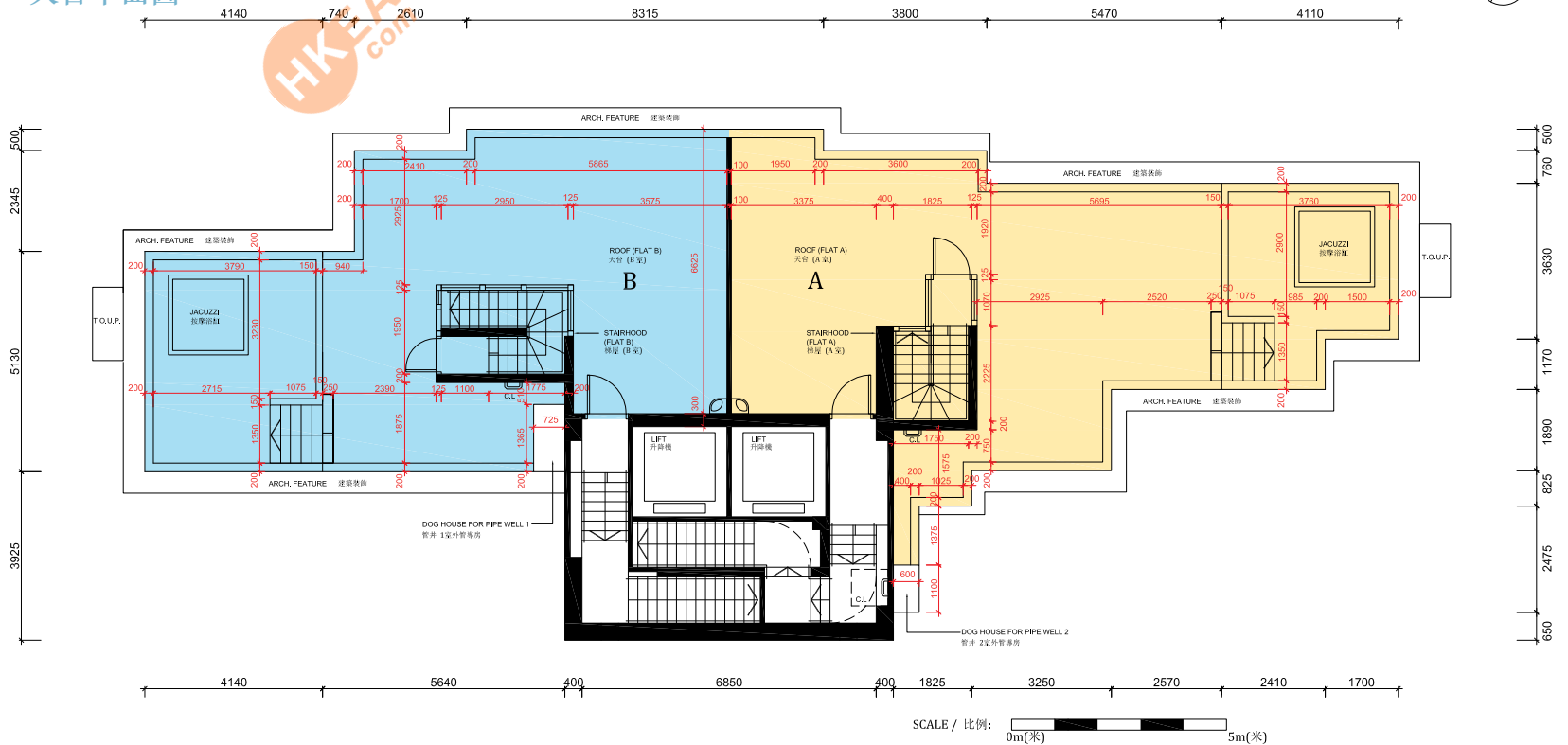
Please refer to page 15 of this sales brochure for the remarks and legends of the terms and abbreviations for the floor plans of residential properties.

請參閱本售樓說明書第 15 頁為住宅物業樓面平面圖而設之備註及名詞及簡稱的圖例。

10 FLOOR PLANS OF RESIDENTIAL PROPERTIES IN THE DEVELOPMENT

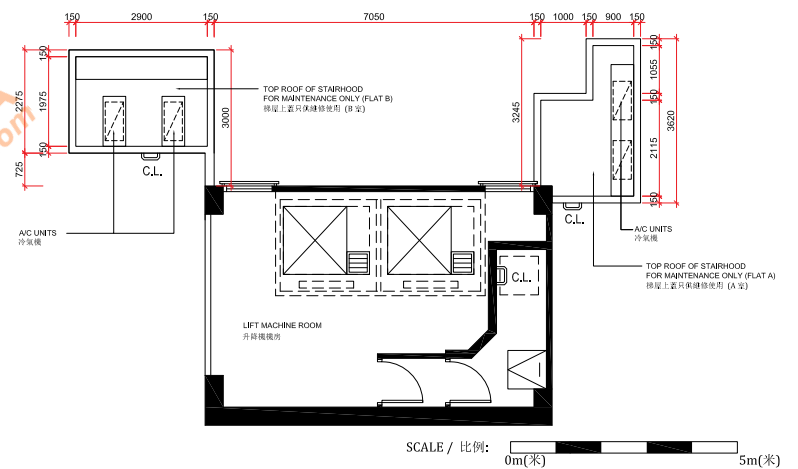
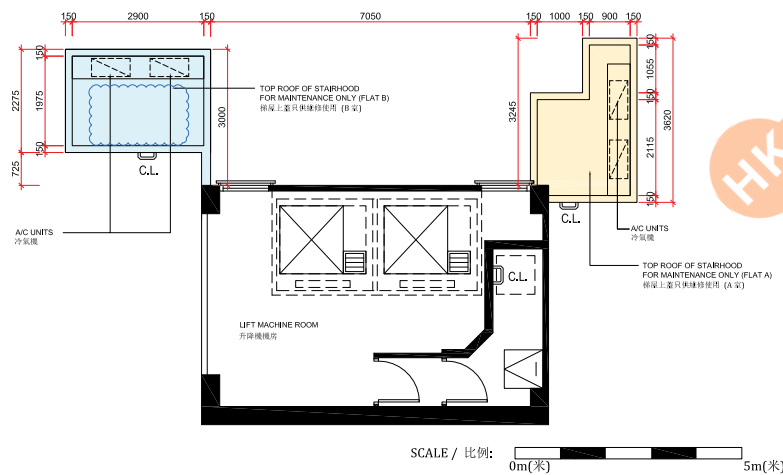
發展項目的住宅物業的樓面平面圖

Roof Plan
天台平面圖



Lift Machine Room Plan
升降機房平面圖

As-is Lift Machine Room Plan
升降機房現狀平面圖



Each Residential Property 每個住宅物業	Flat 室	A	B
Floor to Floor Height (mm) 層與層之間的高度 (毫米)	Roof 天台	N/A 不適用	N/A 不適用
Thickness of Floor Slab (excluding plaster) (mm) 樓板 (不包括灰泥) 的厚度 (毫米)		N/A 不適用	N/A 不適用

Notes: The dimensions in floor plans are all structural dimensions in millimeter.

備註：平面圖所列的數字為以毫米標示之建築結構尺寸。

The area of top roof of stairhood is not included in the area of roof / flat roof.

梯屋上蓋的面積不計算於天台 / 平台面積之內。

The internal areas of the residential properties on the upper floors will generally be slightly larger than those on the lower floors because of the reducing thickness of the structural walls on the upper floors.

因住宅物業的較高樓層的結構牆的厚度遞減，較高樓層的內部面積，一般比較低樓層的內部面積稍大。

Top roof of stairhood of Flat B on 35/F has been altered by way of minor works or exempted works under the Buildings Ordinance after the completion of the Development. The approximate location of the alteration is indicated with curved lines in blue on this floor plan. Alteration works for top of stairhood of Flat B on 35/F includes erection of 2 nos. of concrete plinths for air-conditioners.

35樓B室之梯屋上蓋在發展項目落成後進行小型工程或獲《建築物條例》豁免的工程而有所改動。該等改動的大概位置於本樓面平面圖中已用藍色曲線作出標示。35樓B室梯屋上蓋改動工程包括豎設2個混凝土基座支承冷氣機。

Please refer to page 15 of this sales brochure for the remarks and legends of the terms and abbreviations for the floor plans of residential properties.

請參閱本售樓說明書第15頁為住宅物業樓面平面圖而設之備註及名詞及簡稱的圖例。