

No. 301 House Elevation

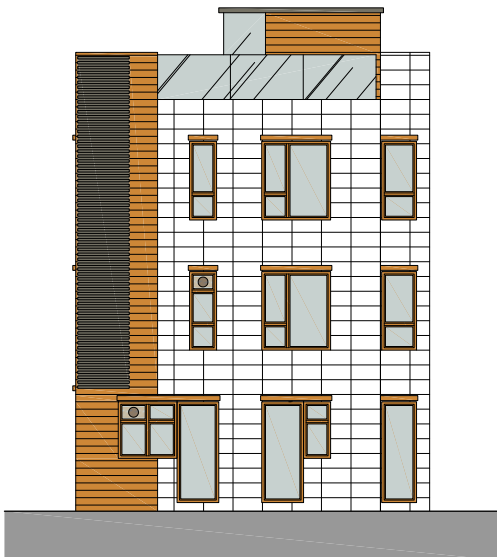
301號屋立面圖



ELEVATION 1
立面圖一
SOUTH WEST 西南方



ELEVATION 3
立面圖三
SOUTH EAST 東南方



ELEVATION 2
立面圖二
NORTH EAST 東北方



ELEVATION 4
立面圖四
NORTH WEST 西北方

No. 301 House Elevation

301號屋立面圖



The elevations:

- (a) are prepared on the basis of the building plans for the Development
- (b) are in general accordance with the outward appearance of the Development.

本立面：

- (a) 發展項目的建築圖則為基礎擬備；及
- (b) 大致上與發展項目的外觀一致。

No. 302 House Elevation

302號屋立面圖



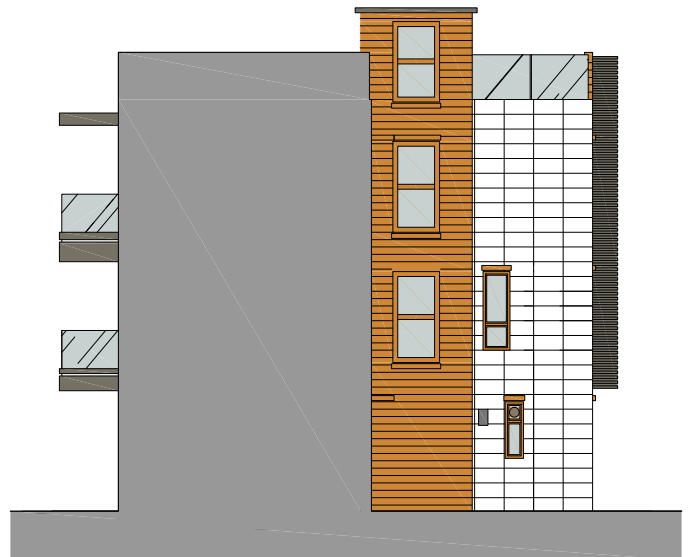
ELEVATION 1
立面圖一
SOUTH WEST 西南方



ELEVATION 3
立面圖三
NORTH WEST 西北方



ELEVATION 2
立面圖二
NORTH EAST 東北方



ELEVATION 4
立面圖四
SOUTH EAST 東南方

No. 302 House Elevation

302號屋立面圖



The elevations:

- (a) are prepared on the basis of the building plans for the Development
- (b) are in general accordance with the outward appearance of the Development.

本立面：

- (a) 發展項目的建築圖則為基礎擬備；及
- (b) 大致上與發展項目的外觀一致。

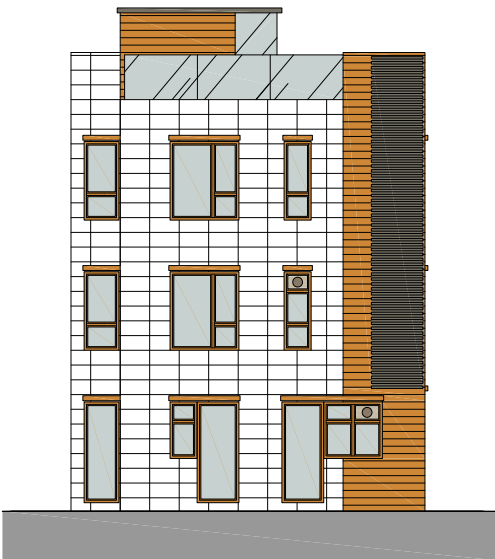
No. 303 House Elevation
303號屋立面圖



ELEVATION 1
立面圖一
SOUTH WEST 西南方



ELEVATION 3
立面圖三
NORTH WEST 西北方



ELEVATION 2
立面圖二
NORTH EAST 東北方



ELEVATION 4
立面圖四
SOUTH EAST 東南方

No. 303 House Elevation
303號屋立面圖



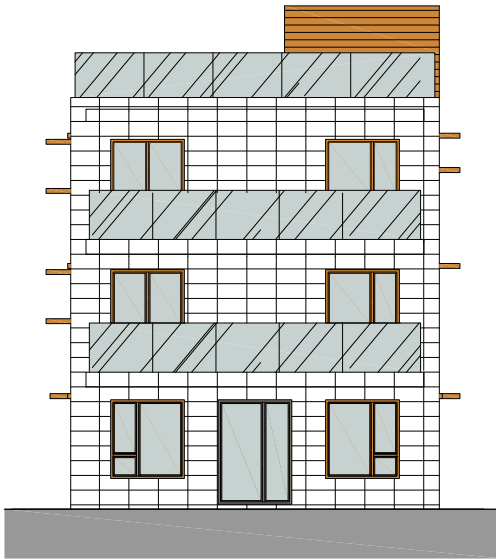
The elevations:

- (a) are prepared on the basis of the building plans for the Development
- (b) are in general accordance with the outward appearance of the Development.

本立面：

- (a) 發展項目的建築圖則為基礎擬備；及
- (b) 大致上與發展項目的外觀一致。

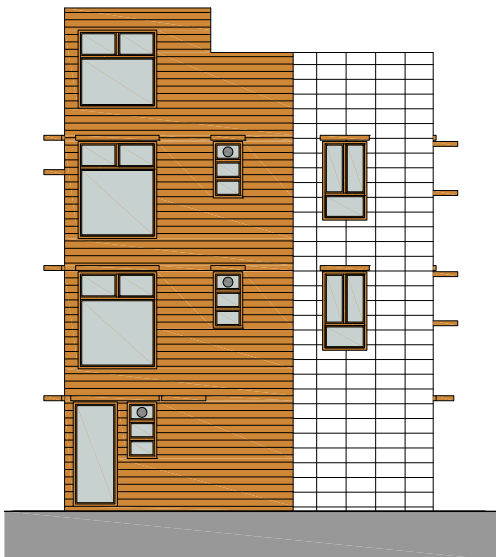
No. 305 House Elevation
305號屋立面圖



ELEVATION 1
立面圖一
SOUTH EAST 東南方



ELEVATION 3
立面圖三
SOUTH WEST 西南方



ELEVATION 2
立面圖二
NORTH WEST 西北方



ELEVATION 4
立面圖四
NORTH EAST 東北方

No. 305 House Elevation
305號屋立面圖



The elevations:

- (a) are prepared on the basis of the building plans for the Development
- (b) are in general accordance with the outward appearance of the Development.

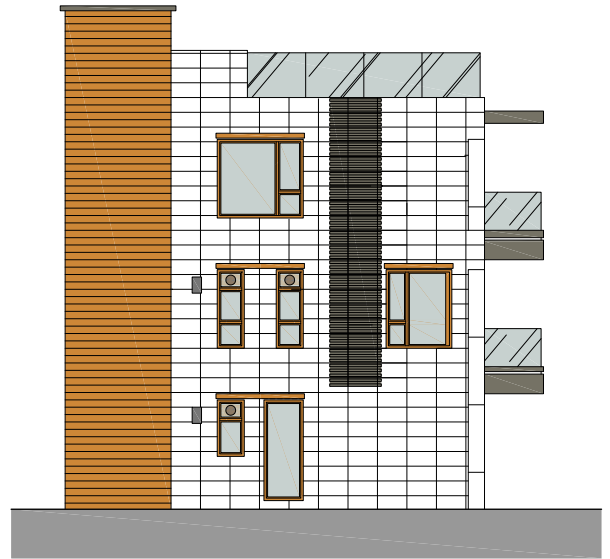
本立面：

- (a) 發展項目的建築圖則為基礎擬備；及
- (b) 大致上與發展項目的外觀一致。

No. 306 House Elevation
306號屋立面圖



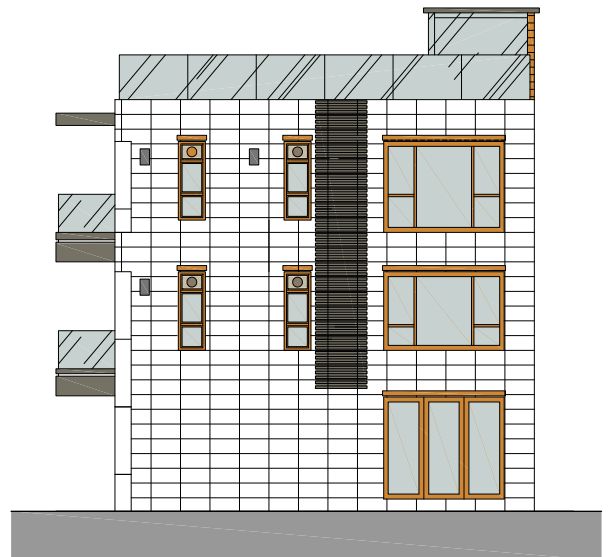
ELEVATION 1
立面圖一
NORTH WEST 西北方



ELEVATION 3
立面圖三
SOUTH WEST 西南方



ELEVATION 2
立面圖二
SOUTH EAST 東南方



ELEVATION 4
立面圖四
NORTH EAST 東北方

No. 306 House Elevation
306號屋立面圖



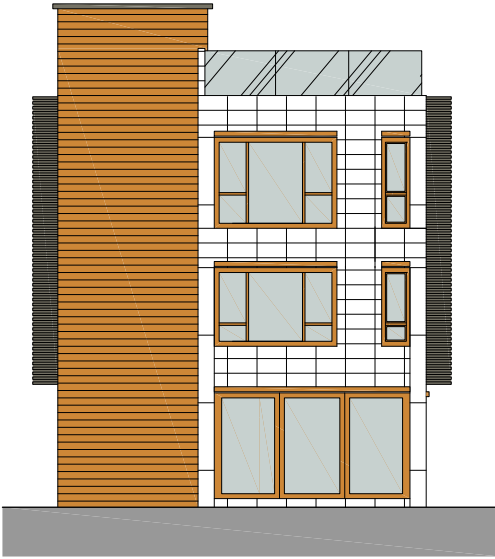
The elevations:

- (a) are prepared on the basis of the building plans for the Development
- (b) are in general accordance with the outward appearance of the Development.

本立面：

- (a) 發展項目的建築圖則為基礎擬備；及
- (b) 大致上與發展項目的外觀一致。

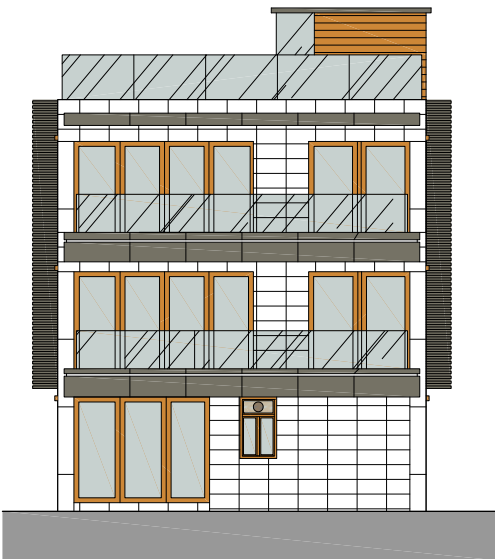
No. 307 House Elevation
307號屋立面圖



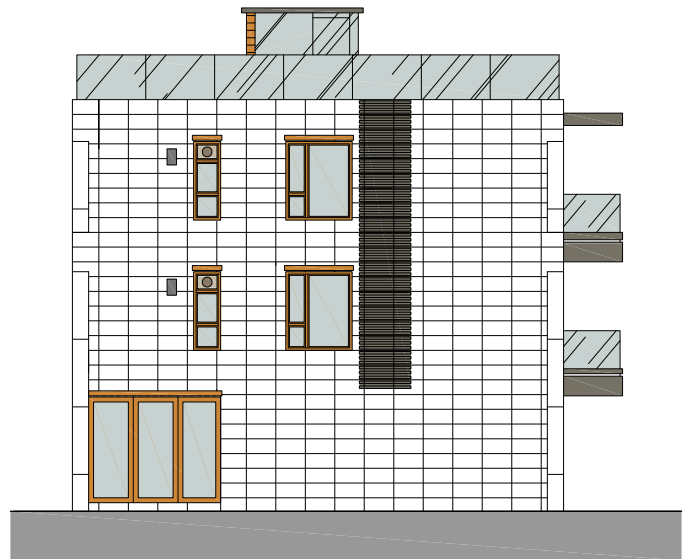
ELEVATION 1
立面圖一
NORTH WEST 西北方



ELEVATION 3
立面圖三
NORTH EAST 東北方



ELEVATION 2
立面圖二
SOUTH EAST 東南方



ELEVATION 4
立面圖四
SOUTH WEST 西南方

No. 307 House Elevation
307號屋立面圖



The elevations:

- (a) are prepared on the basis of the building plans for the Development
- (b) are in general accordance with the outward appearance of the Development.

本立面：

- (a) 發展項目的建築圖則為基礎擬備；及
- (b) 大致上與發展項目的外觀一致。

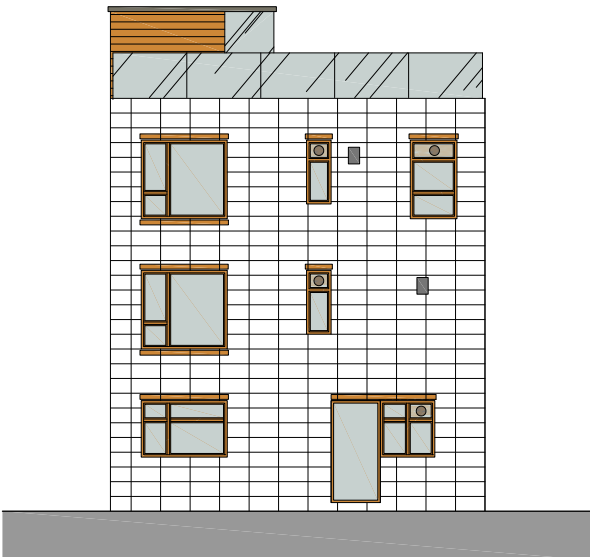
No. 308 House Elevation
308號屋立面圖



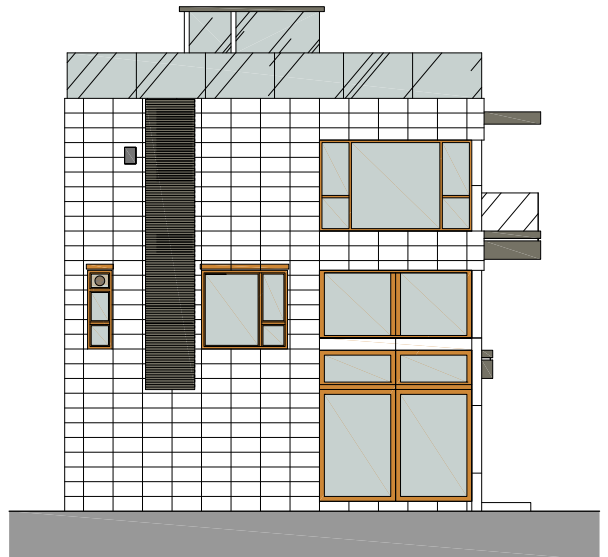
ELEVATION 1
立面圖一
SOUTH WEST 西南方



ELEVATION 3
立面圖三
SOUTH EAST 東南方



ELEVATION 2
立面圖二
NORTH EAST 東北方



ELEVATION 4
立面圖四
NORTH WEST 西北方

No. 308 House Elevation
308號屋立面圖



The elevations:

- (a) are prepared on the basis of the building plans for the Development
- (b) are in general accordance with the outward appearance of the Development.

本立面：

- (a) 發展項目的建築圖則為基礎擬備；及
- (b) 大致上與發展項目的外觀一致。

No. 309 House Elevation

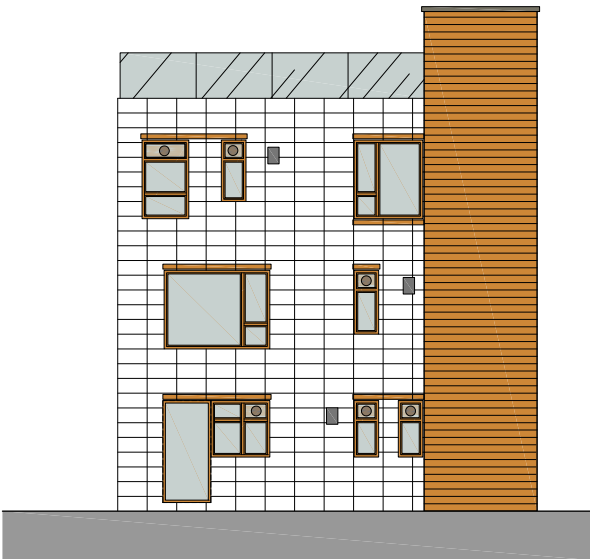
309號屋立面圖



ELEVATION 1
立面圖一
SOUTH WEST 西南方



ELEVATION 3
立面圖三
SOUTH EAST 東南方



ELEVATION 2
立面圖二
NORTH EAST 東北方



ELEVATION 4
立面圖四
NORTH WEST 西北方

No. 309 House Elevation
309號屋立面圖



The elevations:

- (a) are prepared on the basis of the building plans for the Development
- (b) are in general accordance with the outward appearance of the Development.

本立面：

- (a) 發展項目的建築圖則為基礎擬備；及
- (b) 大致上與發展項目的外觀一致。

No. 310 House Elevation

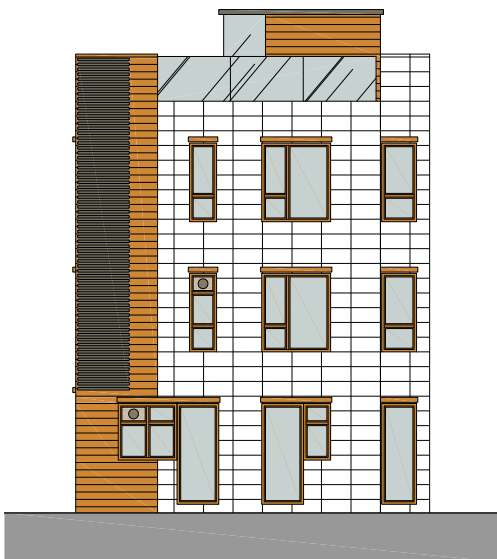
310號屋立面圖



ELEVATION 1
立面圖一
WEST 西方



ELEVATION 3
立面圖三
SOUTH 南方



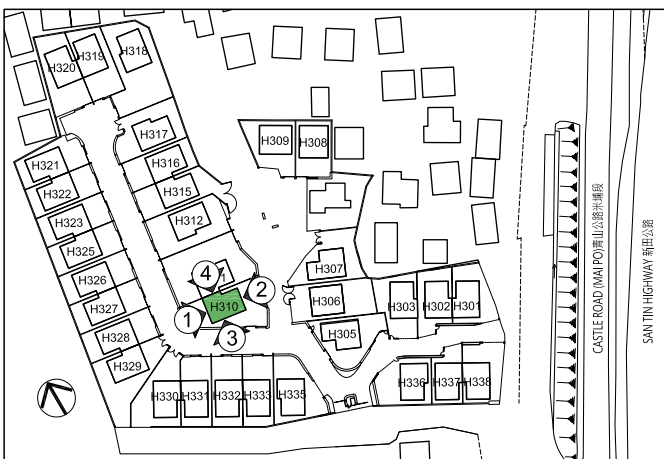
ELEVATION 2
立面圖二
EAST 東方



ELEVATION 4
立面圖四
NORTH 北方

No. 310 House Elevation

310號屋立面圖



The elevations:

- (a) are prepared on the basis of the building plans for the Development
- (b) are in general accordance with the outward appearance of the Development.

本立面：

- (a) 發展項目的建築圖則為基礎擬備；及
- (b) 大致上與發展項目的外觀一致。

No. 311 House Elevation

311號屋立面圖



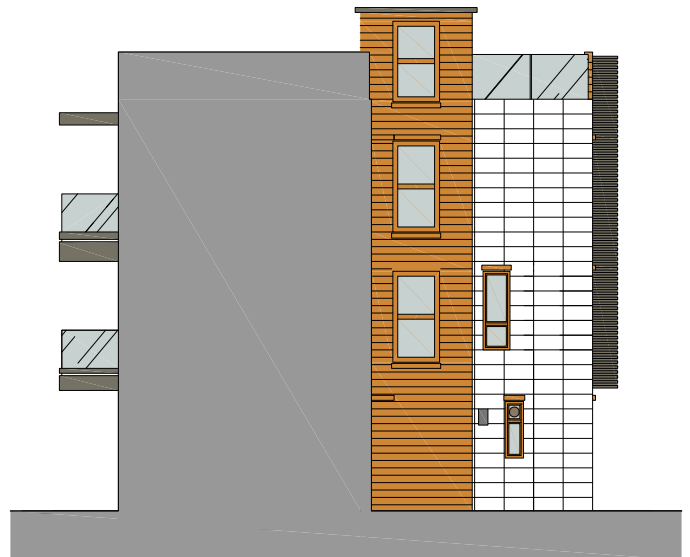
ELEVATION 1
立面圖一
WEST 西方



ELEVATION 3
立面圖三
NORTH 北方



ELEVATION 2
立面圖二
EAST 東方



ELEVATION 4
立面圖四
SOUTH 南方

No. 311 House Elevation
311號屋立面圖



The elevations:

- (a) are prepared on the basis of the building plans for the Development
- (b) are in general accordance with the outward appearance of the Development.

本立面：

- (a) 發展項目的建築圖則為基礎擬備；及
- (b) 大致上與發展項目的外觀一致。

No. 312 House Elevation

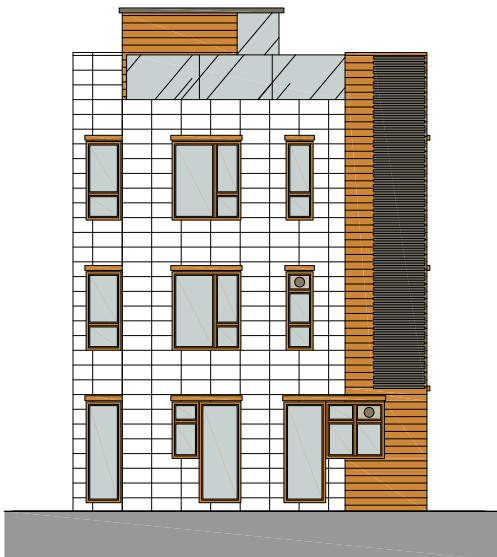
312號屋立面圖



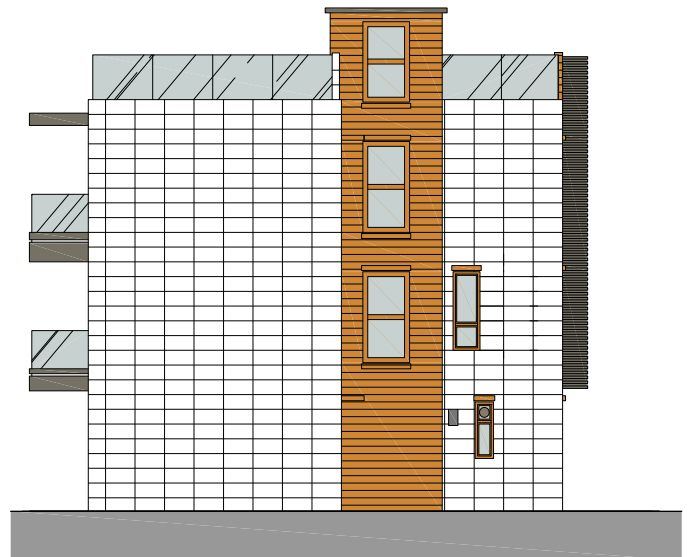
ELEVATION 1
立面圖一
WEST 西方



ELEVATION 3
立面圖三
NORTH 北方



ELEVATION 2
立面圖二
EAST 東方



ELEVATION 4
立面圖四
SOUTH 南方

No. 312 House Elevation

312號屋立面圖



The elevations:

- (a) are prepared on the basis of the building plans for the Development
- (b) are in general accordance with the outward appearance of the Development.

本立面：

- (a) 發展項目的建築圖則為基礎擬備；及
- (b) 大致上與發展項目的外觀一致。

No. 315 House Elevation

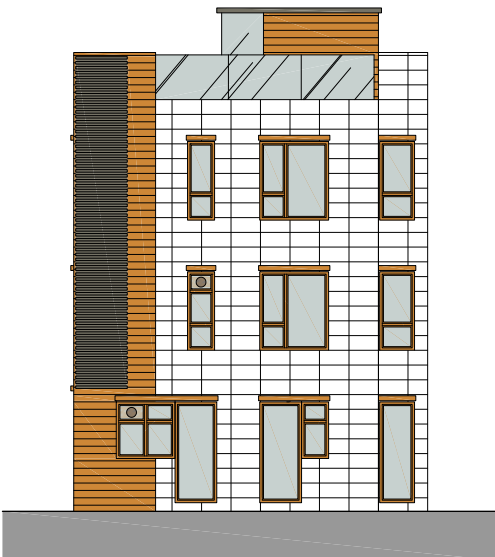
315號屋立面圖



ELEVATION 1
立面圖一
WEST 西方



ELEVATION 3
立面圖三
SOUTH 南方



ELEVATION 2
立面圖二
EAST 東方



ELEVATION 4
立面圖四
NORTH 北方

No. 315 House Elevation

315號屋立面圖



The elevations:

- (a) are prepared on the basis of the building plans for the Development
- (b) are in general accordance with the outward appearance of the Development.

本立面：

- (a) 發展項目的建築圖則為基礎擬備；及
- (b) 大致上與發展項目的外觀一致。

No. 316 House Elevation

316號屋立面圖



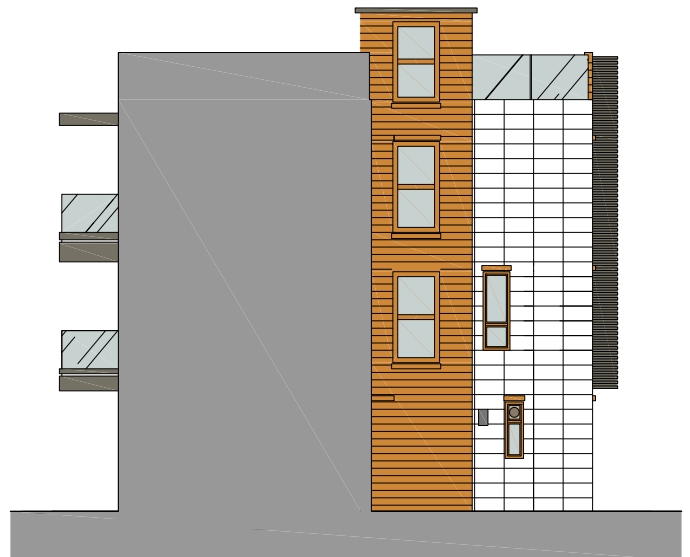
ELEVATION 1
立面圖一
WEST 西方



ELEVATION 3
立面圖三
NORTH 北方



ELEVATION 2
立面圖二
EAST 東方



ELEVATION 4
立面圖四
SOUTH 南方

No. 316 House Elevation

316號屋立面圖



The elevations:

- (a) are prepared on the basis of the building plans for the Development
- (b) are in general accordance with the outward appearance of the Development.

本立面：

- (a) 發展項目的建築圖則為基礎擬備；及
- (b) 大致上與發展項目的外觀一致。

No. 317 House Elevation

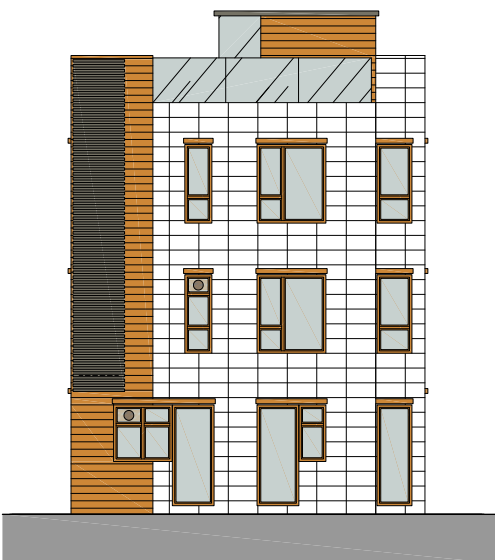
317號屋立面圖



ELEVATION 1
立面圖一
WEST 西方



ELEVATION 3
立面圖三
SOUTH 南方



ELEVATION 2
立面圖二
EAST 東方



ELEVATION 4
立面圖四
NORTH 北方

No. 317 House Elevation
317號屋立面圖



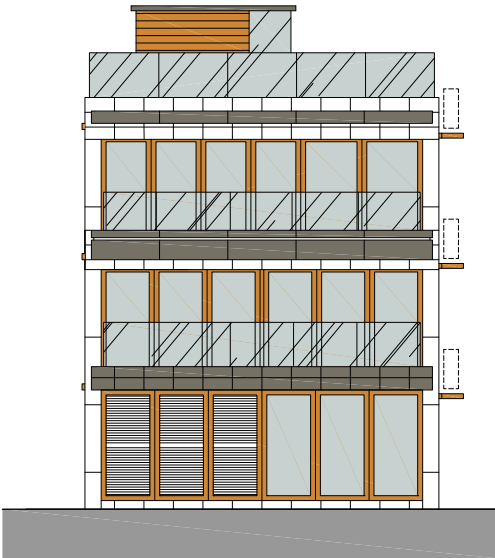
The elevations:

- (a) are prepared on the basis of the building plans for the Development
- (b) are in general accordance with the outward appearance of the Development.

本立面：

- (a) 發展項目的建築圖則為基礎擬備；及
- (b) 大致上與發展項目的外觀一致。

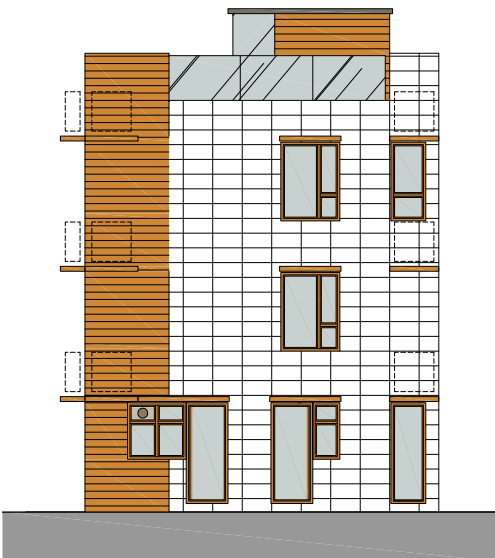
No. 318 House Elevation
318號屋立面圖



ELEVATION 1
 立面圖一
 SOUTH 南方



ELEVATION 3
 立面圖三
 EAST 東方



ELEVATION 2
 立面圖二
 NORTH 北方



ELEVATION 4
 立面圖四
 WEST 西方

No. 318 House Elevation
318號屋立面圖



The elevations:

- (a) are prepared on the basis of the building plans for the Development
- (b) are in general accordance with the outward appearance of the Development.

本立面：

- (a) 發展項目的建築圖則為基礎擬備；及
- (b) 大致上與發展項目的外觀一致。

No. 319 House Elevation

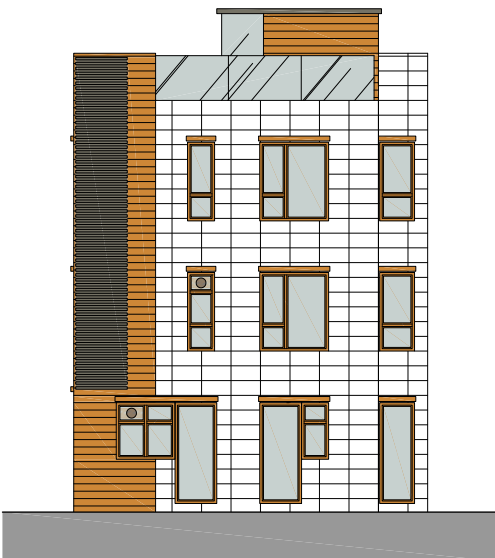
319號屋立面圖



ELEVATION 1
立面圖一
SOUTH 南方



ELEVATION 3
立面圖三
EAST 東方



ELEVATION 2
立面圖二
NORTH 北方



ELEVATION 4
立面圖四
WEST 西方

No. 319 House Elevation

319號屋立面圖



The elevations:

- (a) are prepared on the basis of the building plans for the Development
- (b) are in general accordance with the outward appearance of the Development.

本立面：

- (a) 發展項目的建築圖則為基礎擬備；及
- (b) 大致上與發展項目的外觀一致。

No. 320 House Elevation

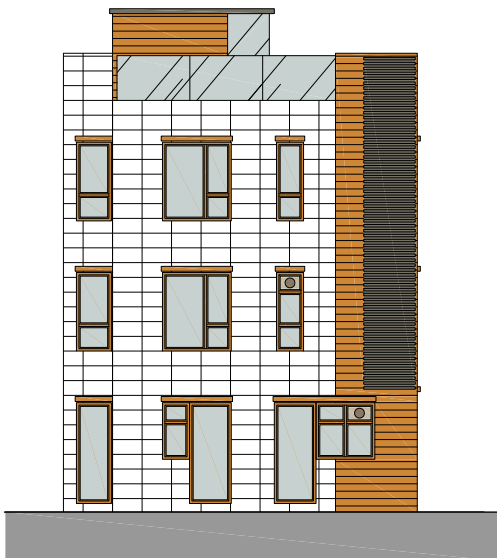
320號屋立面圖



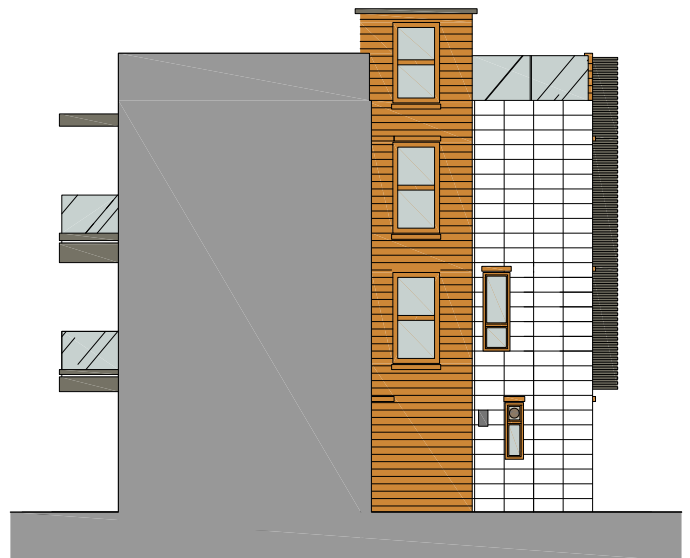
ELEVATION 1
立面圖一
SOUTH 南方



ELEVATION 3
立面圖三
WEST 西方



ELEVATION 2
立面圖二
NORTH 北方



ELEVATION 4
立面圖四
EAST 東方

No. 320 House Elevation

320號屋立面圖



The elevations:

- (a) are prepared on the basis of the building plans for the Development
- (b) are in general accordance with the outward appearance of the Development.

本立面：

- (a) 發展項目的建築圖則為基礎擬備；及
- (b) 大致上與發展項目的外觀一致。

No. 321 House Elevation

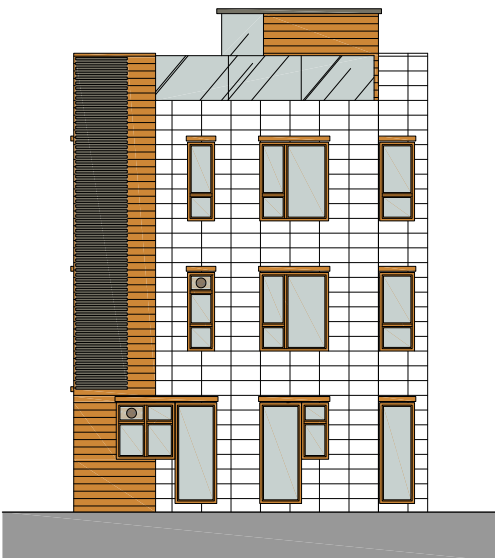
321號屋立面圖



ELEVATION 1
立面圖一
EAST 東方



ELEVATION 3
立面圖三
NORTH 北方



ELEVATION 2
立面圖二
WEST 西方



ELEVATION 4
立面圖四
SOUTH 南方

No. 321 House Elevation

321號屋立面圖



The elevations:

- (a) are prepared on the basis of the building plans for the Development
- (b) are in general accordance with the outward appearance of the Development.

本立面：

- (a) 發展項目的建築圖則為基礎擬備；及
- (b) 大致上與發展項目的外觀一致。

No. 322 House Elevation
322號屋立面圖



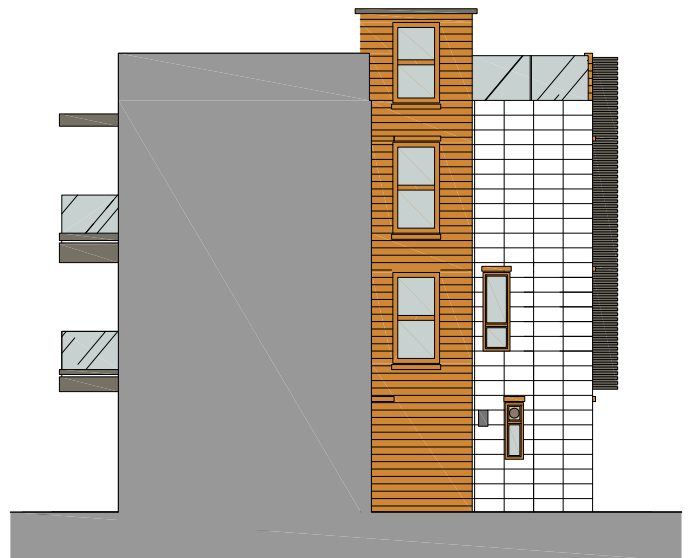
ELEVATION 1
立面圖一
EAST 東方



ELEVATION 3
立面圖三
SOUTH 南方



ELEVATION 2
立面圖二
WEST 西方



ELEVATION 4
立面圖四
NORTH 北方

No. 322 House Elevation
322號屋立面圖



The elevations:

- (a) are prepared on the basis of the building plans for the Development
- (b) are in general accordance with the outward appearance of the Development.

本立面：

- (a) 發展項目的建築圖則為基礎擬備；及
- (b) 大致上與發展項目的外觀一致。

No. 323 House Elevation

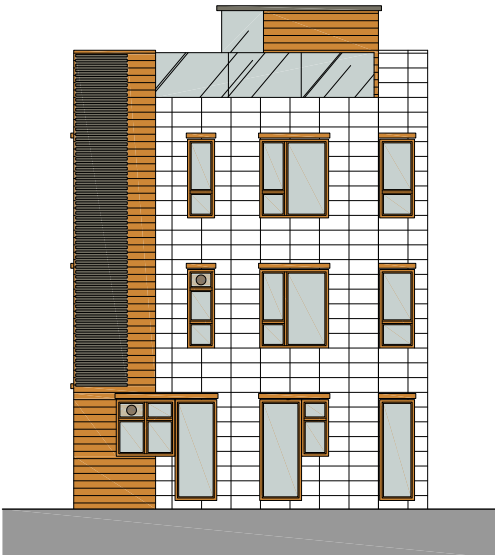
323號屋立面圖



ELEVATION 1
立面圖一
EAST 東方



ELEVATION 3
立面圖三
NORTH 北方



ELEVATION 2
立面圖二
WEST 西方



ELEVATION 4
立面圖四
SOUTH 南方

No. 323 House Elevation

323號屋立面圖



The elevations:

- (a) are prepared on the basis of the building plans for the Development
- (b) are in general accordance with the outward appearance of the Development.

本立面：

- (a) 發展項目的建築圖則為基礎擬備；及
- (b) 大致上與發展項目的外觀一致。

No. 325 House Elevation

325號屋立面圖



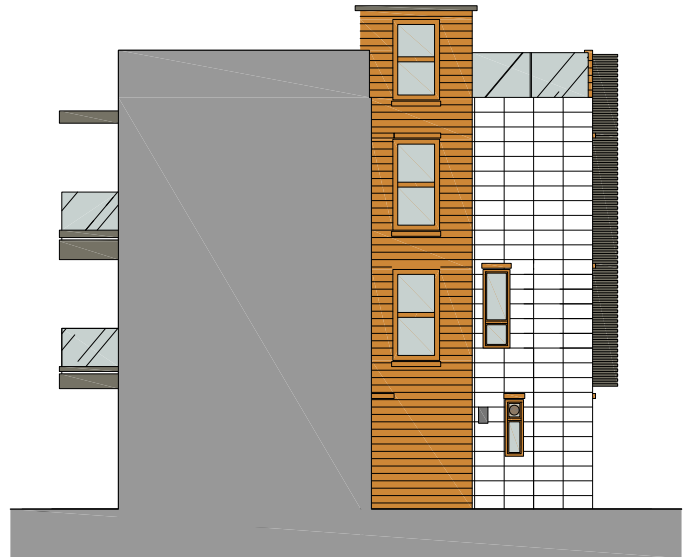
ELEVATION 1
立面圖一
EAST 東方



ELEVATION 3
立面圖三
SOUTH 南方



ELEVATION 2
立面圖二
WEST 西方



ELEVATION 4
立面圖四
NORTH 北方

No. 325 House Elevation

325號屋立面圖



The elevations:

- (a) are prepared on the basis of the building plans for the Development
- (b) are in general accordance with the outward appearance of the Development.

本立面：

- (a) 發展項目的建築圖則為基礎擬備；及
- (b) 大致上與發展項目的外觀一致。

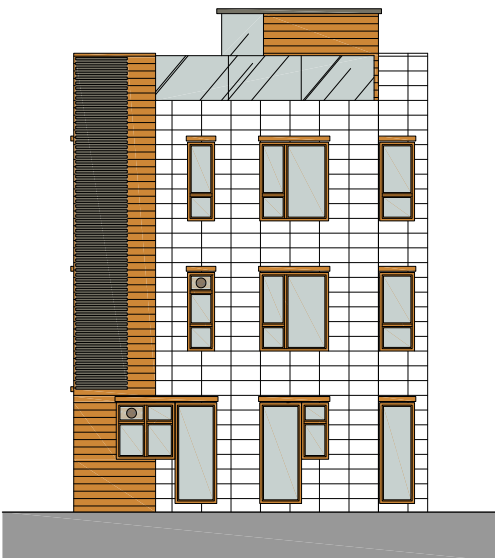
No. 326 House Elevation
326號屋立面圖



ELEVATION 1
 立面圖一
 EAST 東方



ELEVATION 3
 立面圖三
 NORTH 北方



ELEVATION 2
 立面圖二
 WEST 西方



ELEVATION 4
 立面圖四
 SOUTH 南方

No. 326 House Elevation
326號屋立面圖



The elevations:

- (a) are prepared on the basis of the building plans for the Development
- (b) are in general accordance with the outward appearance of the Development.

本立面：

- (a) 發展項目的建築圖則為基礎擬備；及
- (b) 大致上與發展項目的外觀一致。

No. 327 House Elevation

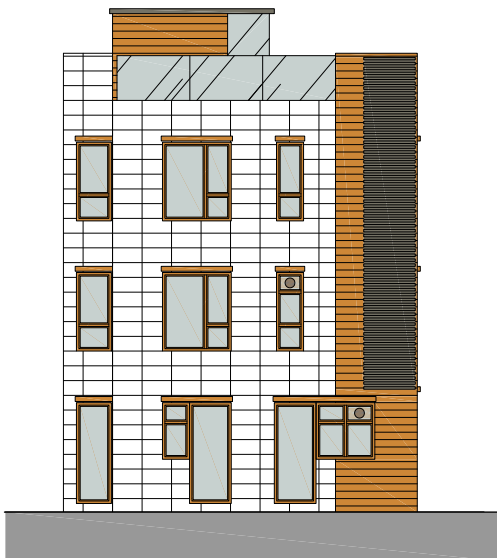
327號屋立面圖



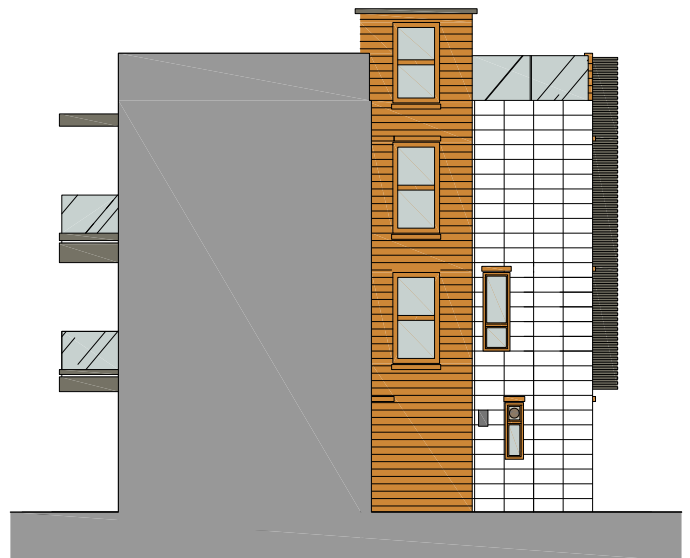
ELEVATION 1
立面圖一
EAST 東方



ELEVATION 3
立面圖三
SOUTH 南方



ELEVATION 2
立面圖二
WEST 西方



ELEVATION 4
立面圖四
NORTH 北方

No. 327 House Elevation

327號屋立面圖



The elevations:

- (a) are prepared on the basis of the building plans for the Development
- (b) are in general accordance with the outward appearance of the Development.

本立面：

- (a) 發展項目的建築圖則為基礎擬備；及
- (b) 大致上與發展項目的外觀一致。

No. 328 House Elevation

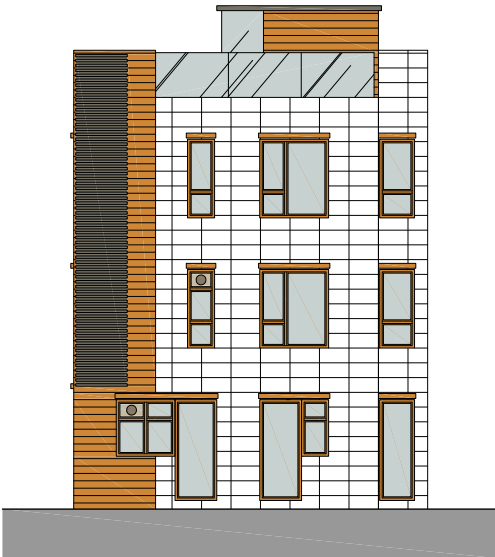
328號屋立面圖



ELEVATION 1
立面圖一
EAST 東方



ELEVATION 3
立面圖三
NORTH 北方



ELEVATION 2
立面圖二
WEST 西方



ELEVATION 4
立面圖四
SOUTH 南方

No. 328 House Elevation
328號屋立面圖



The elevations:

- (a) are prepared on the basis of the building plans for the Development
- (b) are in general accordance with the outward appearance of the Development.

本立面：

- (a) 發展項目的建築圖則為基礎擬備；及
- (b) 大致上與發展項目的外觀一致。

No. 329 House Elevation
329號屋立面圖



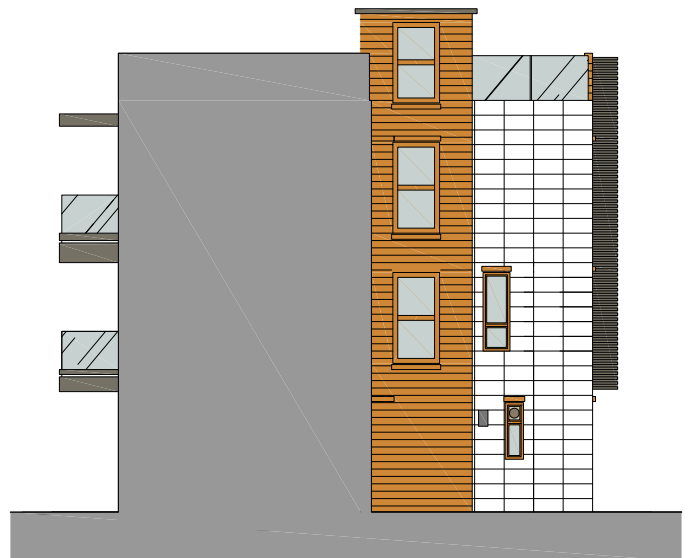
ELEVATION 1
立面圖一
EAST 東方



ELEVATION 3
立面圖三
SOUTH 南方



ELEVATION 2
立面圖二
WEST 西方



ELEVATION 4
立面圖四
NORTH 北方

No. 329 House Elevation
329號屋立面圖



The elevations:

- (a) are prepared on the basis of the building plans for the Development
- (b) are in general accordance with the outward appearance of the Development.

本立面：

- (a) 發展項目的建築圖則為基礎擬備；及
- (b) 大致上與發展項目的外觀一致。

No. 330 House Elevation

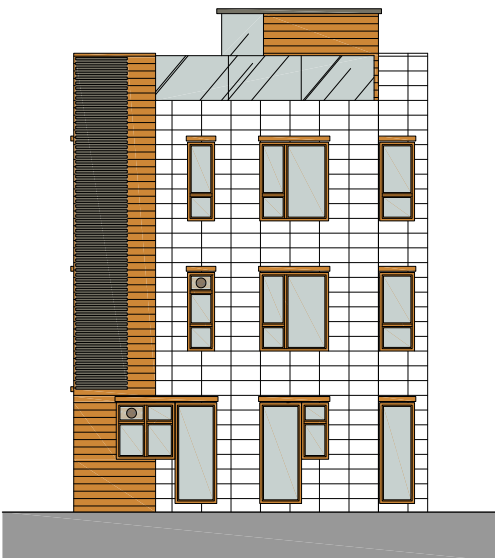
330號屋立面圖



ELEVATION 1
立面圖一
NORTH EAST 東北方



ELEVATION 3
立面圖三
NORTH WEST 西北方

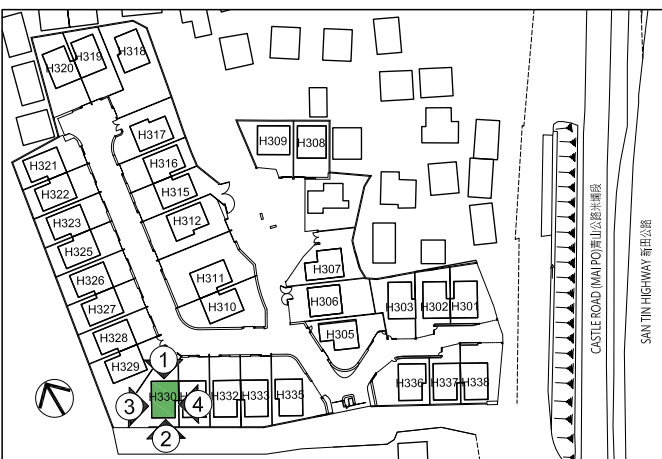


ELEVATION 2
立面圖二
SOUTH WEST 西南方



ELEVATION 4
立面圖四
SOUTH EAST 東南方

No. 330 House Elevation
330號屋立面圖



The elevations:

- (a) are prepared on the basis of the building plans for the Development
- (b) are in general accordance with the outward appearance of the Development.

本立面：

- (a) 發展項目的建築圖則為基礎擬備；及
- (b) 大致上與發展項目的外觀一致。

No. 331 House Elevation

331號屋立面圖



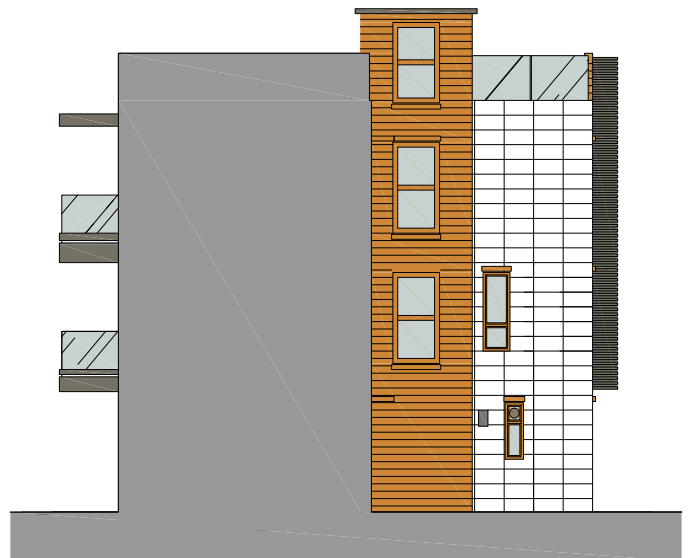
ELEVATION 1
立面圖一
NORTH EAST 東北方



ELEVATION 3
立面圖三
SOUTH EAST 東南方



ELEVATION 2
立面圖二
SOUTH WEST 西南方



ELEVATION 4
立面圖四
NORTH WEST 西北方

No. 331 House Elevation

331號屋立面圖



The elevations:

- (a) are prepared on the basis of the building plans for the Development
- (b) are in general accordance with the outward appearance of the Development.

本立面：

- (a) 發展項目的建築圖則為基礎擬備；及
- (b) 大致上與發展項目的外觀一致。

No. 332 House Elevation

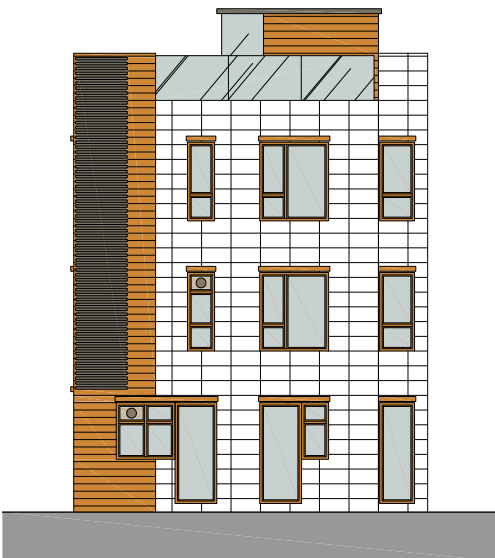
332號屋立面圖



ELEVATION 1
立面圖一
NORTH EAST 東北方



ELEVATION 3
立面圖三
NORTH WEST 西北方



ELEVATION 2
立面圖二
SOUTH WEST 西南方



ELEVATION 4
立面圖四
SOUTH EAST 東南方

No. 332 House Elevation

332號屋立面圖



The elevations:

- (a) are prepared on the basis of the building plans for the Development
- (b) are in general accordance with the outward appearance of the Development.

本立面：

- (a) 發展項目的建築圖則為基礎擬備；及
- (b) 大致上與發展項目的外觀一致。

No. 333 House Elevation

333號屋立面圖



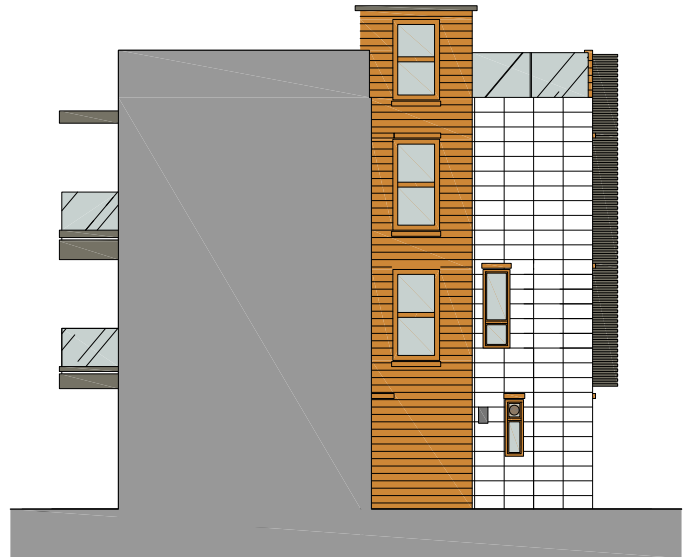
ELEVATION 1
立面圖一
NORTH EAST 東北方



ELEVATION 3
立面圖三
SOUTH EAST 東南方



ELEVATION 2
立面圖二
SOUTH WEST 西南方



ELEVATION 4
立面圖四
NORTH WEST 西北方

No. 333 House Elevation

333號屋立面圖



The elevations:

- (a) are prepared on the basis of the building plans for the Development
- (b) are in general accordance with the outward appearance of the Development.

本立面：

- (a) 發展項目的建築圖則為基礎擬備；及
- (b) 大致上與發展項目的外觀一致。

No. 335 House Elevation

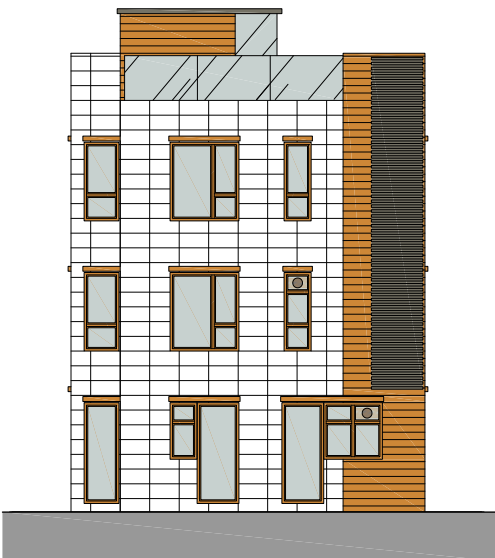
335號屋立面圖



ELEVATION 1
立面圖一
NORTH EAST 東北方



ELEVATION 3
立面圖三
SOUTH EAST 東南方



ELEVATION 2
立面圖二
SOUTH WEST 西南方



ELEVATION 4
立面圖四
NORTH WEST 西北方

No. 335 House Elevation

335號屋立面圖



The elevations:

- (a) are prepared on the basis of the building plans for the Development
- (b) are in general accordance with the outward appearance of the Development.

本立面：

- (a) 發展項目的建築圖則為基礎擬備；及
- (b) 大致上與發展項目的外觀一致。

No. 336 House Elevation

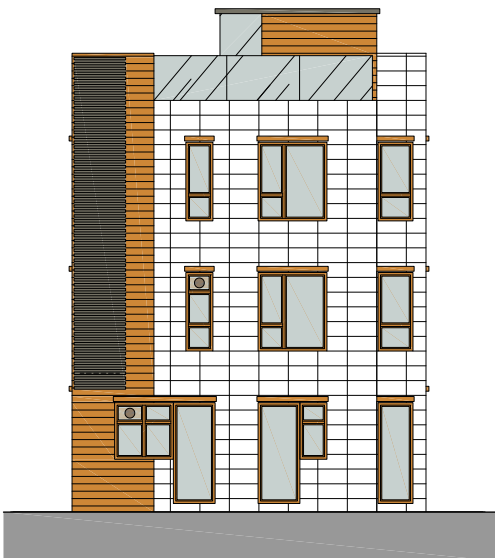
336號屋立面圖



ELEVATION 1
立面圖一
NORTH EAST 東北方



ELEVATION 3
立面圖三
NORTH WEST 西北方



ELEVATION 2
立面圖二
SOUTH WEST 西南方



ELEVATION 4
立面圖四
SOUTH EAST 東南方

No. 336 House Elevation

336號屋立面圖



The elevations:

- (a) are prepared on the basis of the building plans for the Development
- (b) are in general accordance with the outward appearance of the Development.

本立面：

- (a) 發展項目的建築圖則為基礎擬備；及
- (b) 大致上與發展項目的外觀一致。

No. 337 House Elevation

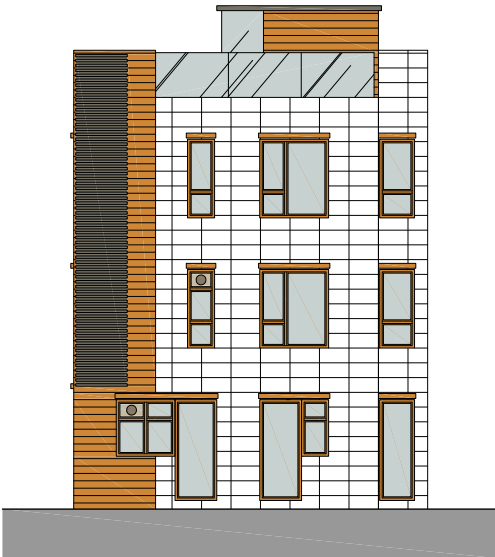
337號屋立面圖



ELEVATION 1
立面圖一
NORTH EAST 東北方



ELEVATION 3
立面圖三
NORTH WEST 西北方



ELEVATION 2
立面圖二
SOUTH WEST 西南方



ELEVATION 4
立面圖四
SOUTH EAST 東南方

No. 337 House Elevation
337號屋立面圖



The elevations:

- (a) are prepared on the basis of the building plans for the Development
- (b) are in general accordance with the outward appearance of the Development.

本立面：

- (a) 發展項目的建築圖則為基礎擬備；及
- (b) 大致上與發展項目的外觀一致。

No. 338 House Elevation

338號屋立面圖



ELEVATION 1
立面圖一
NORTH EAST 東北方



ELEVATION 3
立面圖三
SOUTH EAST 東南方



ELEVATION 2
立面圖二
SOUTH WEST 西南方



ELEVATION 4
立面圖四
NORTH WEST 西北方

No. 338 House Elevation

338號屋立面圖



The elevations:

- (a) are prepared on the basis of the building plans for the Development
- (b) are in general accordance with the outward appearance of the Development.

本立面：

- (a) 發展項目的建築圖則為基礎擬備；及
- (b) 大致上與發展項目的外觀一致。