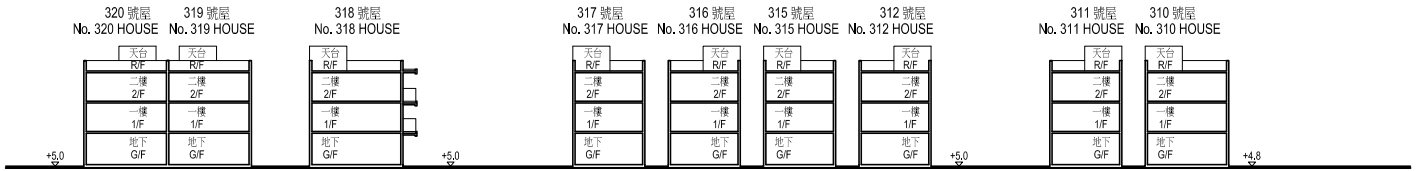
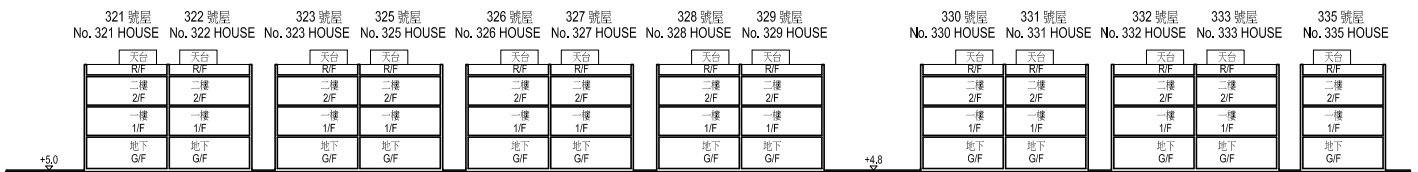


Cross-Section Plan of Building in the Development
發展項目中的建築物的橫截面圖

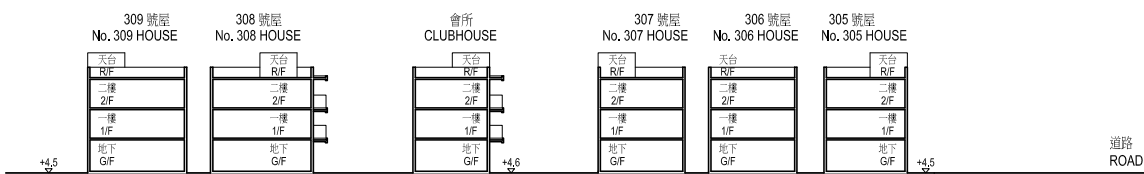
橫截面圖 A-A
CROSS-SECTION PLAN A-A



橫截面圖 B-B
CROSS-SECTION PLAN B-B

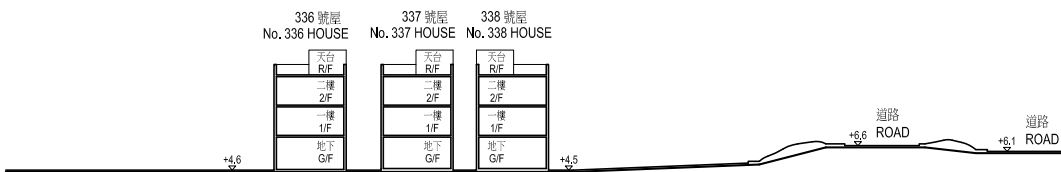
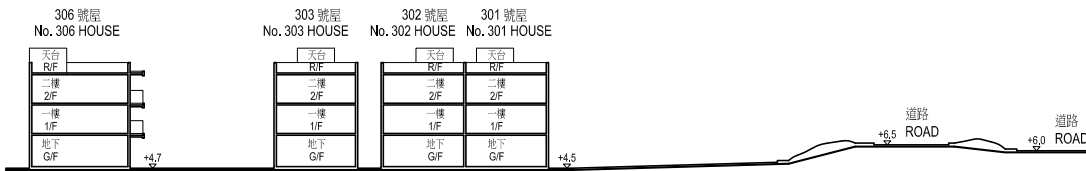


橫截面圖 C-C
CROSS-SECTION PLAN C-C



Note:

1. The part of Road opposite the Development is 6.6 metres above Hong Kong Principal Datum.
2. The level of the lowest residential floor is the Ground Floor of 338 House and is 4.5 metres above Hong Kong Principal Datum.
3. The vendor also advises purchasers to conduct on-site visit for a better understanding of the Development site, its surrounding environment and the public facilities nearby.



備註:

1. 毗鄰建築物的道路一段為香港主水平基準以上約 6.6 米。
2. 發展項目之最低住宅層338號屋地下為香港主水平基準以上約 4.5 米。
3. 賣方亦建議買方到該發展地盤作實地考察，以獲取對該發展地盤及周圍地區的公共設施及環境較佳了解。