

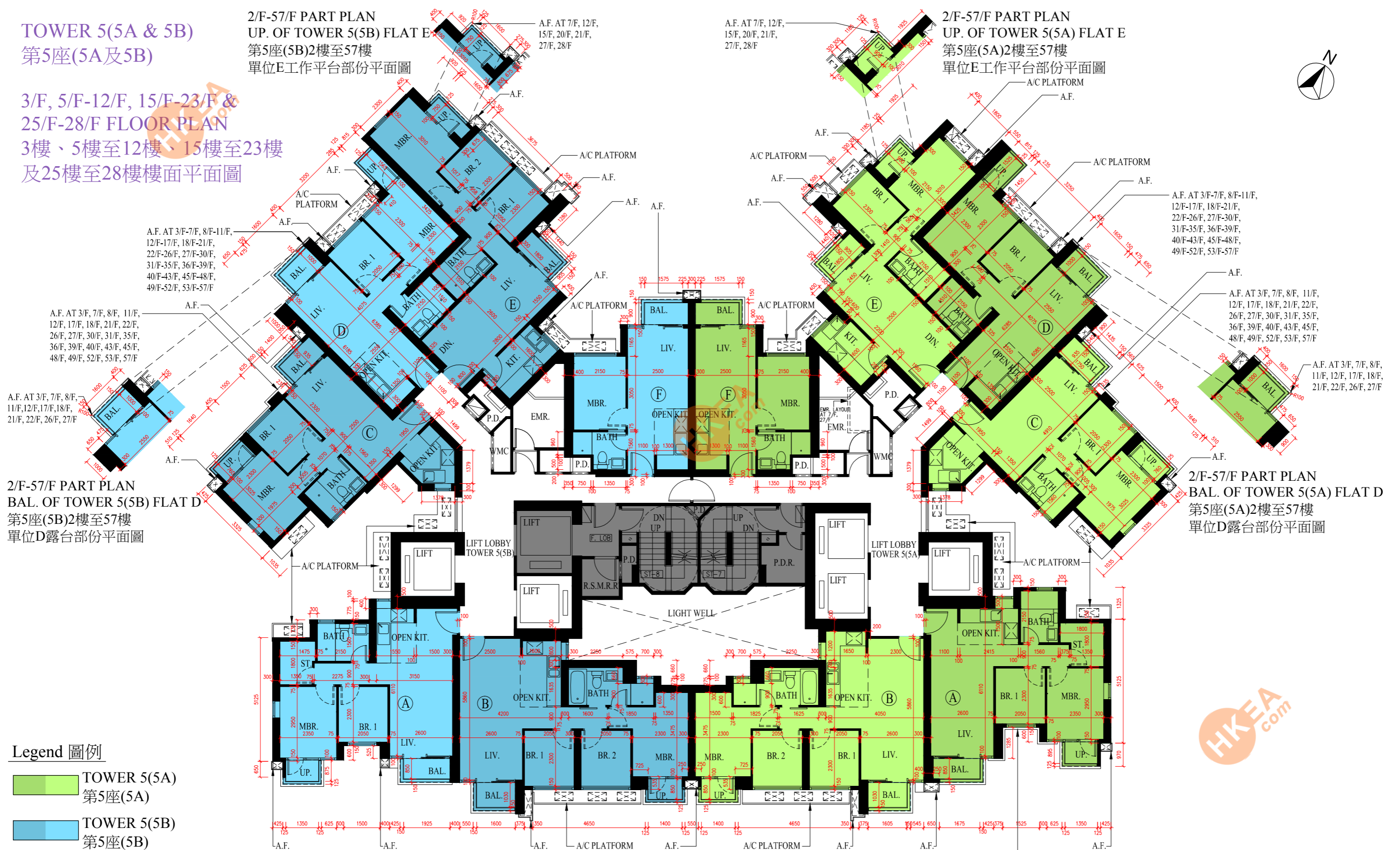
FLOOR PLANS OF RESIDENTIAL PROPERTIES IN THE PHASE 期數的住宅物業的樓面平面圖

TOWER 5(5A & 5B) 第5座(5A及5B)

3/F, 5/F-12/F, 15/F-23/F & 25/F-28/F FLOOR PLAN 3樓、5樓至12樓、15樓至23樓 及25樓至28樓樓面平面圖

2/F-57/F PART PLAN UP. OF TOWER 5(5B) FLAT E 第5座(5B)2樓至57樓 單位E工作平台部份平面圖

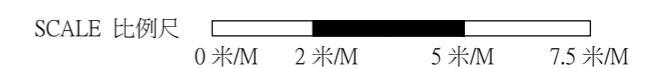
2/F-57/F PART PLAN UP. OF TOWER 5(5A) FLAT E 第5座(5A)2樓至57樓 單位E工作平台部份平面圖



Legend 圖例

- TOWER 5(5A)
第5座(5A)
- TOWER 5(5B)
第5座(5B)
- Parts of "Phase IV Residential Common Areas" (as defined in the Sub-Deed of Mutual Covenant and Management Agreement in respect of Phase IVA of the Development) which form part of Phase IVA of the Development

構成發展項目第IVA期的一部份之「第IV期住宅公用地方」(釋義以發展項目第IVA期的副公共契約及管理協議所訂為準)的部份



FLOOR PLANS OF RESIDENTIAL PROPERTIES IN THE PHASE 期數的住宅物業的樓面平面圖

| | Tower 座 | Floor 樓層 | Flats 單位 | | | | | | Floor 樓層 | Flats 單位 | | | | | |
|---|-----------------|--|----------|---------------------|----------|----------|------|------|-------------|----------|---------------------|---------------|---------------------|---|--|
| | | | A | B | C | D | E | F | | A | B | C | D | E | F |
| The thickness of the floor slabs (excluding plaster) of each residential property (mm) 每個住宅物業的樓板(不包括灰泥)的厚度(毫米) | Tower 5 (5A) | 3/F, 5/F - 12/F, 15/F - 23/F and 25/F - 27/F 3樓, 5樓至12樓, 15樓至23樓及 25樓至27樓 | 150, 175 | 150, 175, 225 | 150, 175 | 150, 175 | 150 | 150 | 28/F 28樓 | 150, 175 | 150, 175, 225 | 150, 175 | 150, 175, 200 | 150, 200 | 150 |
| The floor-to-floor height of each residential property (mm) 每個住宅物業的層與層之間的高度(毫米) | | | 3150 | 3150 | 3150 | 3150 | 3150 | 3150 | | 3150 | 3150, 3400, 3500 | 3150, 3450 | 3150, 3450 | 3150, 3200, 3450, 3500, 3550, 3600 | 3150, 3200, 3450, 3400, 3450, 3550, 3650 |
| | Tower 5 (5B) | 3/F, 5/F - 12/F, 15/F - 23/F and 25/F - 27/F 3樓, 5樓至12樓, 15樓至23樓及 25樓至27樓 | 150, 175 | 150, 175, 225 | 150, 175 | 150, 175 | 150 | 150 | 28/F 28樓 | 150, 175 | 150, 175, 225 | 150, 175 | 150, 175, 200 | 150, 200 | 150 |
| The floor-to-floor height of each residential property (mm) 每個住宅物業的層與層之間的高度(毫米) | | | 3150 | 3150 | 3150 | 3150 | 3150 | 3150 | | 3150 | 3150, 3400, 3450 | 3150, 3450 | 3150, 3450 | 3150, 3200, 3450, 3500, 3550, 3600 | 3150, 3200, 3450, 3400, 3450, 3550, 3650 |

The internal areas of the residential properties on the upper floors will generally be slightly larger than those on the lower floors because of the reducing thickness of the structural walls on the upper floors.

因住宅物業的較高樓層的結構牆的厚度遞減，較高樓層的內部面積，一般比較低樓層的內部面積稍大。

Notes :

- The dimensions in the floor plans are all structural dimensions in millimetre.

備註：

- 樓面平面圖所列之尺寸為以毫米標示之建築結構尺寸。