

FLOOR PLANS OF RESIDENTIAL PROPERTIES IN THE PHASE 期數的住宅物業的樓面平面圖

TOWER 1 7/F - 12/F, 15/F - 23/F, 25/F - 26/F, 28/F - 33/F, 35/F - 43/F AND 45/F - 49/F FLOOR PLAN 第1座 7樓至12樓，15樓至23樓，25樓至26樓，28樓至33樓，35樓至43樓及45樓至49樓樓面平面圖

	Tower 座	Unit 單位 Floor 樓層	A	B	C	D	E	F	G	H	J	K	L	M
			Floor-to-floor height of each residential property (mm) 每個住宅物業的層與層之間的高度(毫米)		7/F - 12/F, 15/F - 23/F, 25/F, 28/F - 33/F, 35/F - 43/F and 45/F - 48/F	2775, 2800, 2900, 3100, 3150	2775, 2800, 3150	2775, 2800, 2900, 3150	2775, 2800, 3150			2775, 2800, 2900, 3150		2775, 2800, 3150
The thickness of the floor slabs (excluding plaster) of each residential property (mm) 每個住宅物業的樓板的厚度(不包括灰泥)(毫米)		7樓至12樓， 15樓至23樓， 25樓，28樓至33樓， 35樓至43樓及 45樓至48樓	150, 400			150	150, 400	150	150, 400		150		150, 400	
Floor-to-floor height of each residential property (mm) 每個住宅物業的層與層之間的高度(毫米)		26/F	3150											
The thickness of the floor slabs (excluding plaster) of each residential property (mm) 每個住宅物業的樓板的厚度(不包括灰泥)(毫米)	1	26樓	150, 400			150	150, 400	150	150, 400		150		150, 400	
Floor-to-floor height of each residential property (mm) 每個住宅物業的層與層之間的高度(毫米)		49/F	2775, 2800, 2900, 3150, 3175	2775, 2800, 3150	2775, 2800, 2900, 3150	2775, 3150, 3175	2775, 2800, 3150		2775, 2800, 2900, 3150		2775, 2800, 3150		2775, 2800, 2900, 3150	
The thickness of the floor slabs (excluding plaster) of each residential property (mm) 每個住宅物業的樓板的厚度(不包括灰泥)(毫米)		49樓	150, 175, 400	150, 400			150, 175	150, 400	150	150, 400		150		150, 400

The internal areas of the residential properties on the upper floors will generally be slightly larger than those on the lower floors because of the reducing thickness of the structural walls on the upper floors.

因住宅物業的較高樓層的結構牆的厚度遞減，較高樓層的內部面積，一般比較低樓層的內部面積稍大。

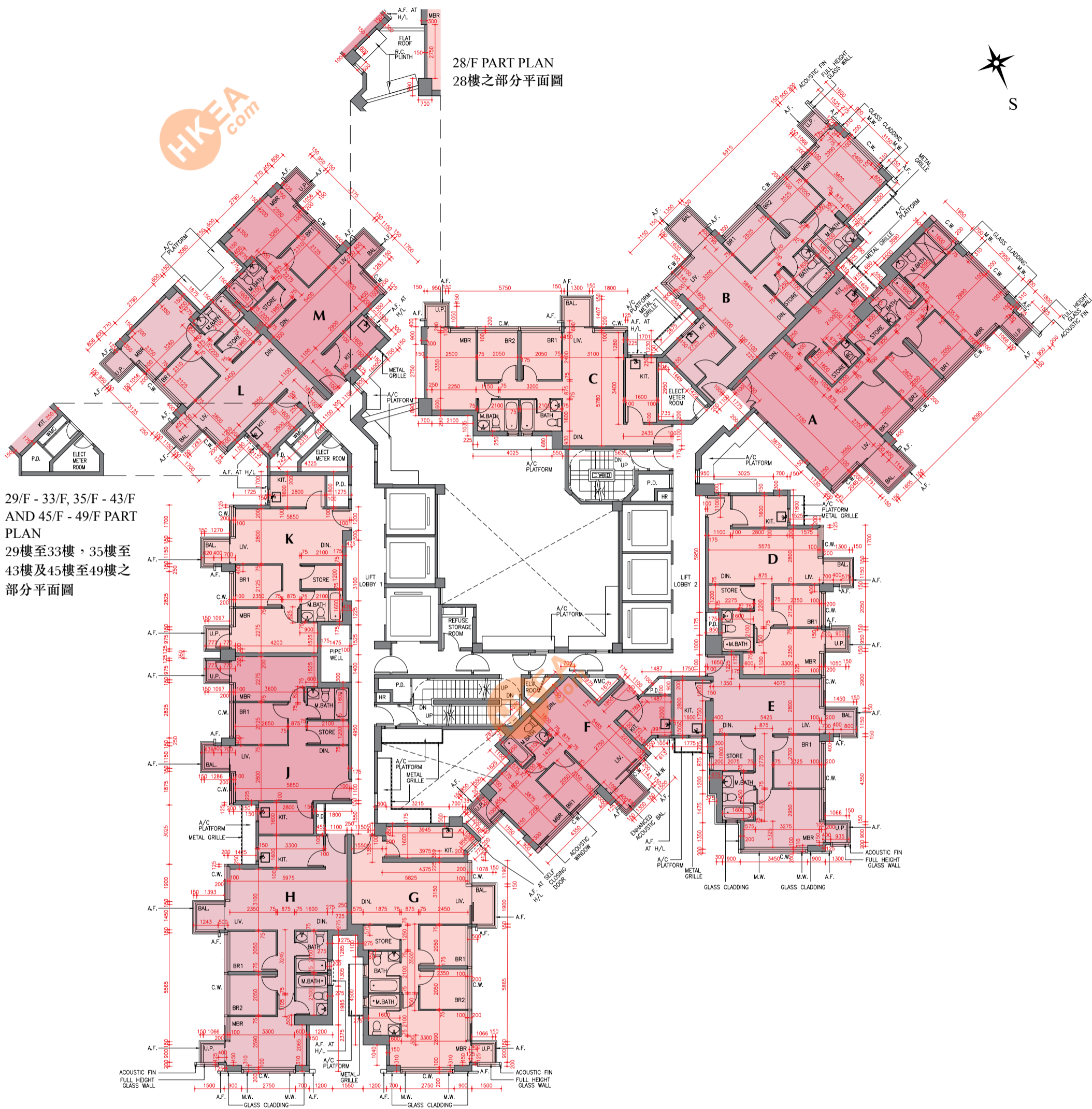
Notes:

- The dimensions in the floor plans are all structural dimensions in millimetre.
- Please refer to pages 26 and 27 of this sales brochure for legend of the terms and abbreviations in studying the floor plans.
- 13/F, 14/F, 24/F, 34/F and 44/F are omitted. 27/F is refuge floor.

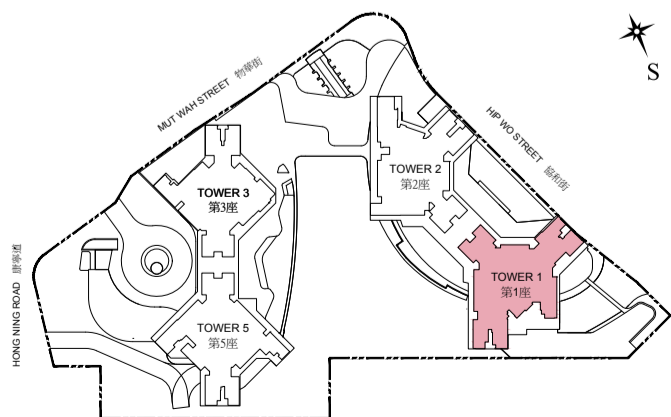
備註：

- 樓面平面圖之尺規所列數字為以毫米標示之建築結構尺寸。
- 請參閱本售樓說明書第26及27頁之圖例以協助閱讀樓面平面圖之名稱和簡稱。
- 不設13樓、14樓、24樓、34樓及44樓。27樓為庇護層。

TOWER 1 7/F - 12/F, 15/F - 23/F, 25/F - 26/F, 28/F - 33/F, 35/F - 43/F AND 45/F - 49/F FLOOR PLAN
 第1座 7樓至12樓, 15樓至23樓, 25樓至26樓, 28樓至33樓, 35樓至43樓及45樓至49樓樓面平面圖



KEY PLAN 指示圖



Scale : 0 5M(米)
 比例 :