

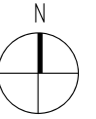
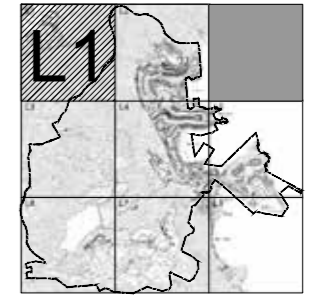
LAYOUT PLAN OF THE DEVELOPMENT  
發展項目的布局圖



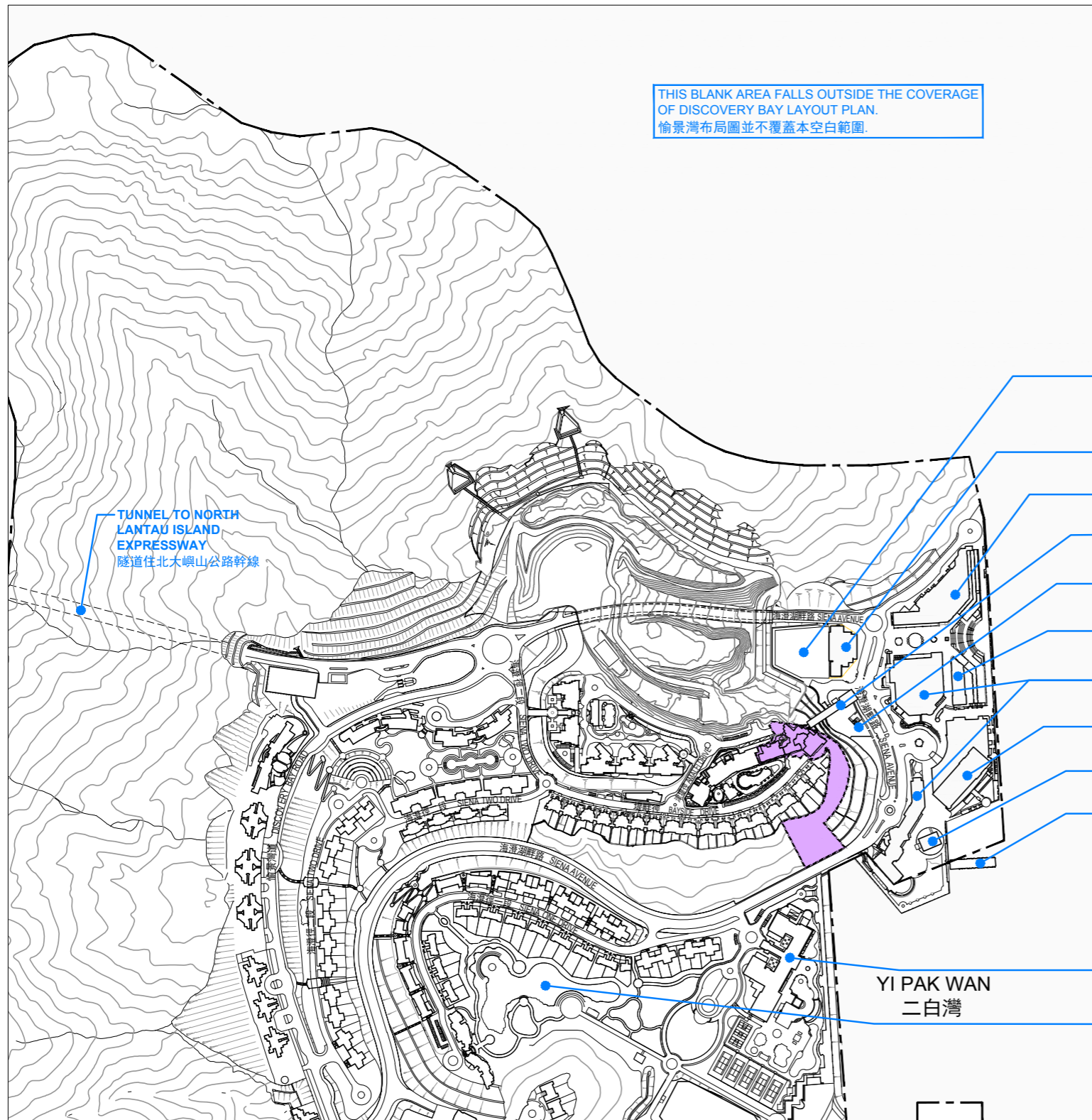
--- Boundary line of the Development  
發展項目的邊界

Scale: 0M/米 100M/米 200M/米 300M/米 400M/米 500M/米  
比例:

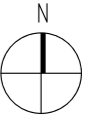
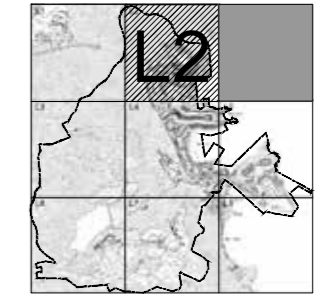
Key Plan  
索引圖



LAYOUT PLAN OF THE DEVELOPMENT  
發展項目的布局圖



Key Plan  
索引圖



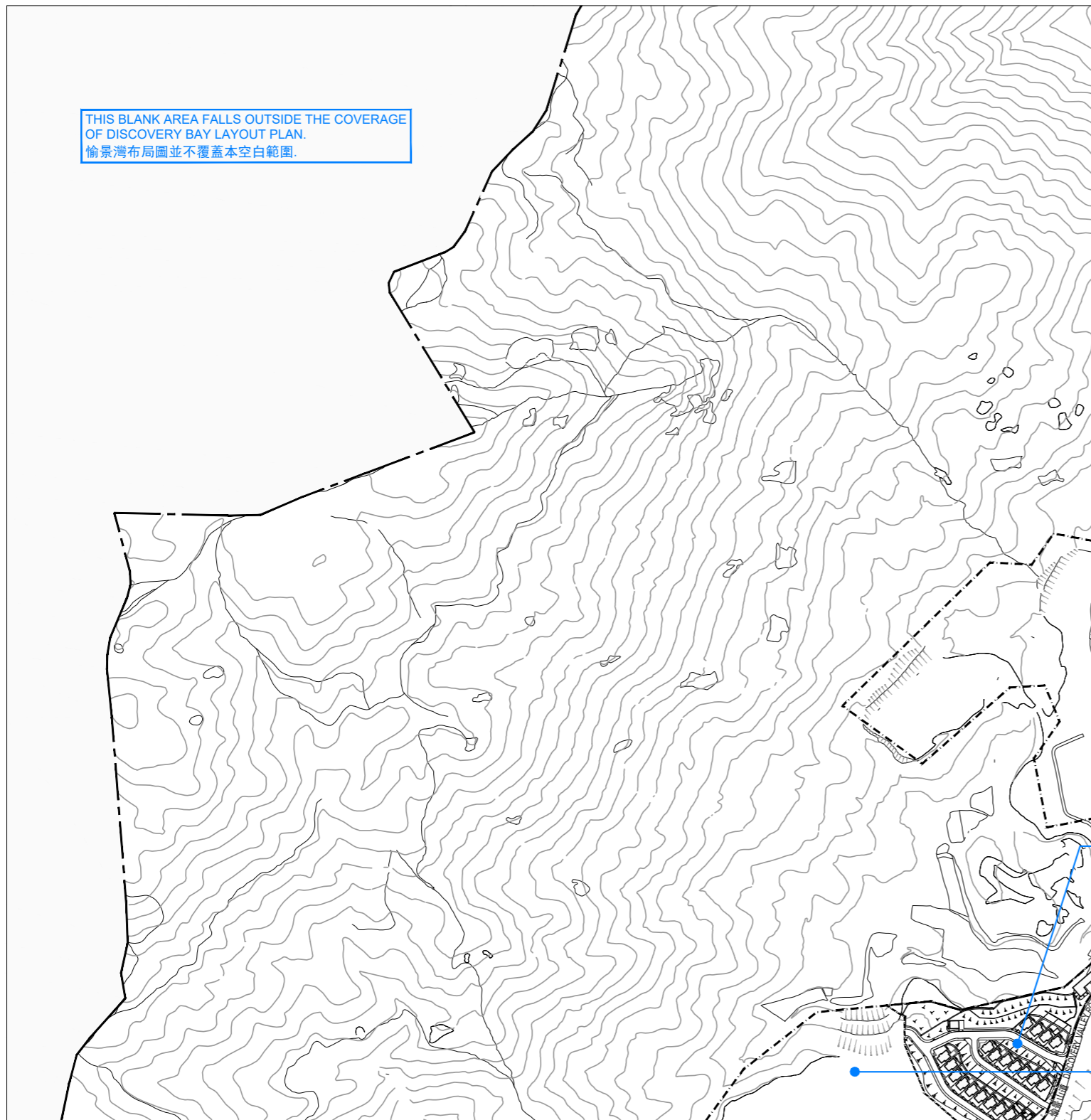
- FUTURE RECREATION DEVELOPMENT  
(NO AUTHORIZED PERSON HAS BEEN APPOINTED FOR THIS RECREATION DEVELOPMENT)  
未來康樂發展項目  
(本康樂發展項目尚未委任認可人士)
- COMMUNITY CENTRE  
社區中心
- PUBLIC RECREATION CENTRE AND OFFICE BLOCK  
公共康樂中心及辦公大樓
- INCLINED LIFT  
升降機
- TRANSPORT INTERCHANGE  
交通交匯處
- OFFICE BLOCK  
辦公大樓
- SHOPPING CENTRE  
商場
- HOTEL  
酒店
- PAVILION  
海濱禮堂
- PASSENGER PIER  
客運碼頭
- RESIDENTS' CLUB  
康樂會所
- CENTRAL PARK  
中央公園

--- Boundary line of the Development  
發展項目的邊界

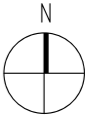
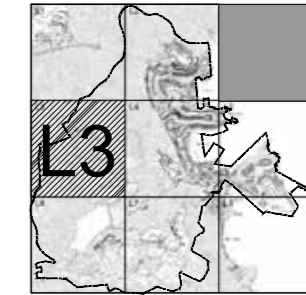
Scale: 0M/米 100M/米 200M/米 300M/米 400M/米 500M/米  
比例:

Location of the Phase  
期數的位置

LAYOUT PLAN OF THE DEVELOPMENT  
發展項目的布局圖



Key Plan  
索引圖



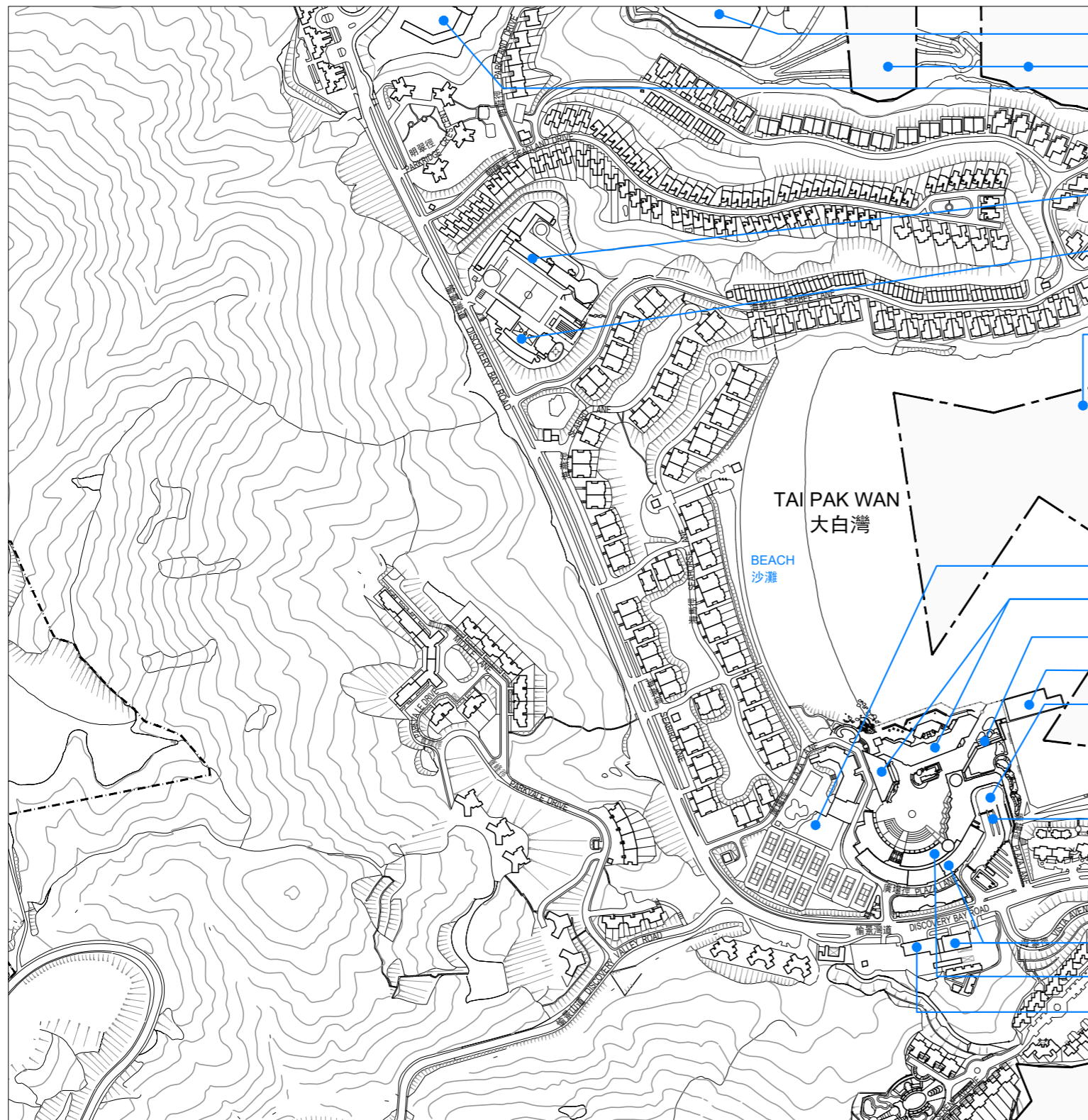
**FUTURE HOUSING DEVELOPMENT**  
(THE ESTIMATED DATE OF COMPLETION OF THE BUILDING OR FACILITIES AS PROVIDED BY THE AUTHORIZED PERSON FOR THIS HOUSING DEVELOPMENT: 1 July 2021, SUBJECT TO REVISIONS FROM TIME TO TIME.)  
未來住宅發展項目  
(本住宅發展項目的認可人士提供的建築物或設施的預計落成日期：2021年7月1日，該日期受制於不時之修訂。)

**FUTURE PUBLIC RECREATION DEVELOPMENT**  
(THE ESTIMATED DATE OF COMPLETION OF THE BUILDING OR FACILITIES AS PROVIDED BY THE AUTHORIZED PERSON FOR THIS PUBLIC RECREATION DEVELOPMENT: 1 March 2025, SUBJECT TO REVISIONS FROM TIME TO TIME.)  
未來公共康樂發展項目  
(本公共康樂發展項目的認可人士提供的建築物或設施的預計落成日期：2025年3月1日，該日期受制於不時之修訂。)

--- Boundary line of the Development  
發展項目的邊界

Scale: 0M/米 100M/米 200M/米 300M/米 400M/米 500M/米  
比例:

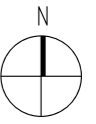
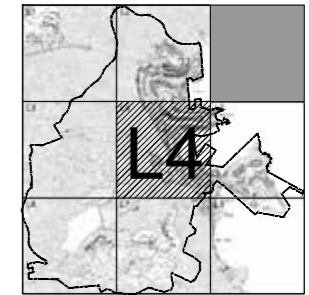
LAYOUT PLAN OF THE DEVELOPMENT  
發展項目的布局圖



- PRIVATE PRIMARY CUM SECONDARY SCHOOL  
私立中小學
- FUTURE SCHOOL DEVELOPMENT  
(NO AUTHORIZED PERSON HAS BEEN APPOINTED FOR THIS SCHOOL DEVELOPMENT)  
未來學校發展項目  
(本學校發展項目尚未委任認可人士)
- INTERNATIONAL SCHOOL  
國際學校
- LOCAL PRIMARY SCHOOL  
本地小學
- THIS BLANK AREA FALLS OUTSIDE THE COVERAGE  
OF DISCOVERY BAY LAYOUT PLAN.  
愉景灣布局圖並不覆蓋本空白範圍。

- RESIDENTS' CLUB  
住客會所
- SHOPPING CENTRE  
商場
- POLICE POST  
警崗
- FERRY PIER  
碼頭
- BUS TERMINUS  
巴士總站
- SHOPPING CENTRE  
商場
- KINDERGARTEN  
幼稚園
- SHOPPING CENTRE  
商場
- FIRE STATION  
消防局

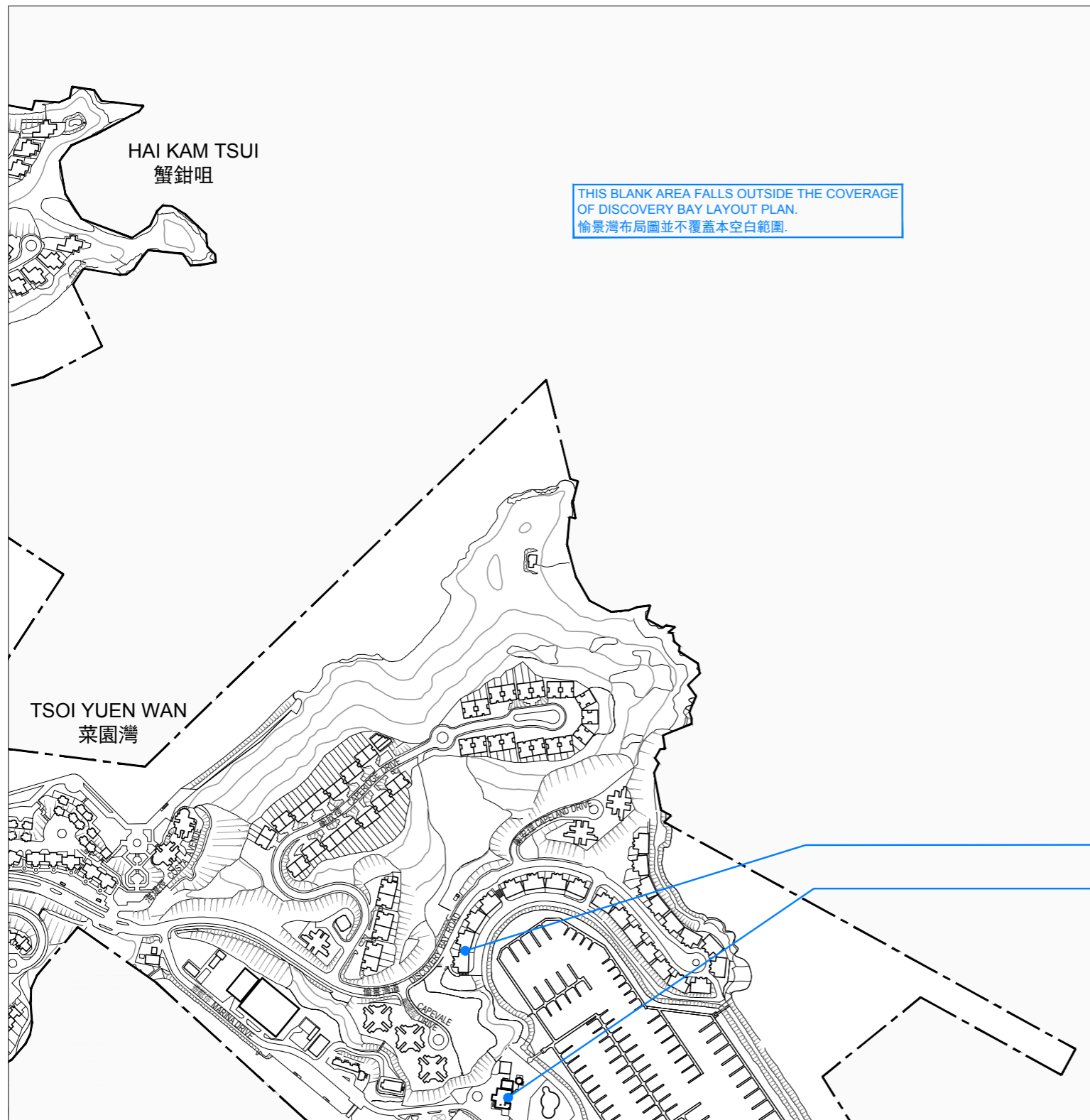
Key Plan  
索引圖



--- Boundary line of the Development  
發展項目的邊界

Scale: 0M/米 100M/米 200M/米 300M/米 400M/米 500M/米  
比例:

LAYOUT PLAN OF THE DEVELOPMENT  
發展項目的布局圖

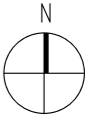
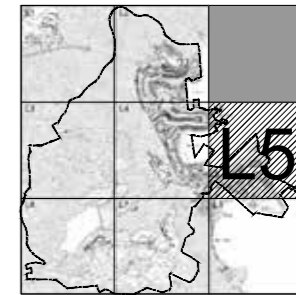


KINDERGARTEN  
幼稚園  
MARINA CLUB  
遊艇會

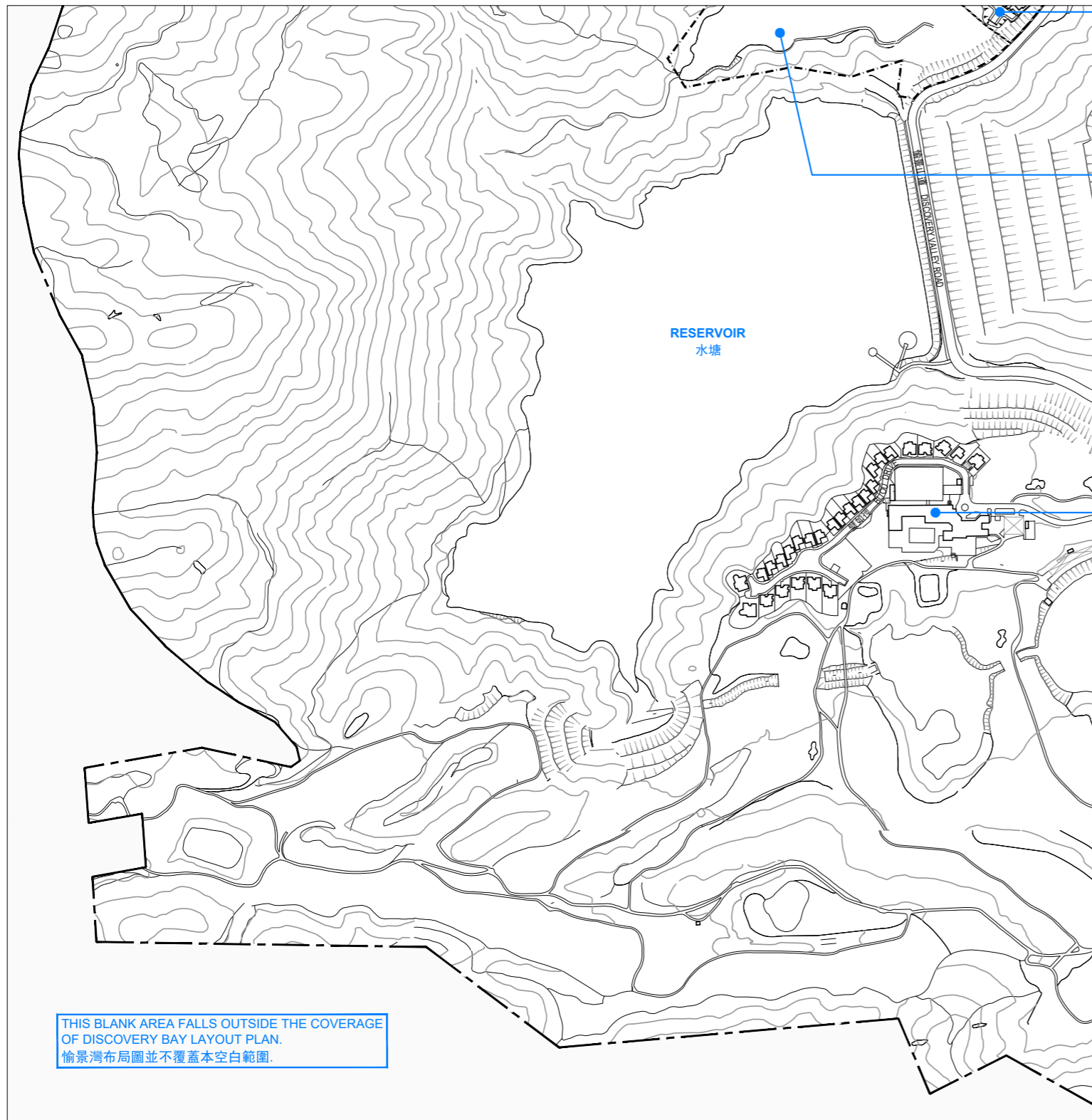
--- Boundary line of the Development  
發展項目的邊界

Scale: 0M/米 100M/米 200M/米 300M/米 400M/米 500M/米  
比例:

Key Plan  
索引圖



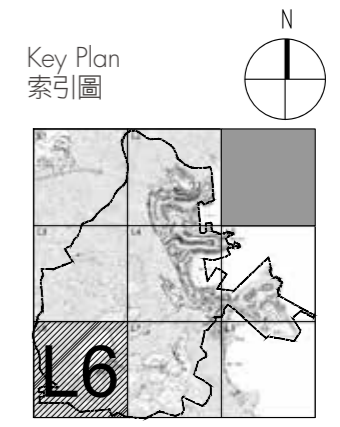
LAYOUT PLAN OF THE DEVELOPMENT  
發展項目的布局圖



**FUTURE HOUSING DEVELOPMENT**  
(THE ESTIMATED DATE OF COMPLETION OF THE BUILDING OR FACILITIES AS PROVIDED BY THE AUTHORIZED PERSON FOR THIS HOUSING DEVELOPMENT: 1 July 2021, SUBJECT TO REVISIONS FROM TIME TO TIME.)  
未來住宅發展項目  
(本住宅發展項目的認可人士提供的建築物或設施的預計落成日期：2021年7月1日，該日期受制於不時之修訂。)

**FUTURE PUBLIC RECREATION DEVELOPMENT**  
(THE ESTIMATED DATE OF COMPLETION OF THE BUILDING OR FACILITIES AS PROVIDED BY THE AUTHORIZED PERSON FOR THIS PUBLIC RECREATION DEVELOPMENT: 1 March 2025, SUBJECT TO REVISIONS FROM TIME TO TIME.)  
未來公共康樂發展項目  
(本公共康樂發展項目的認可人士提供的建築物或設施的預計落成日期：2025年3月1日，該日期受制於不時之修訂。)

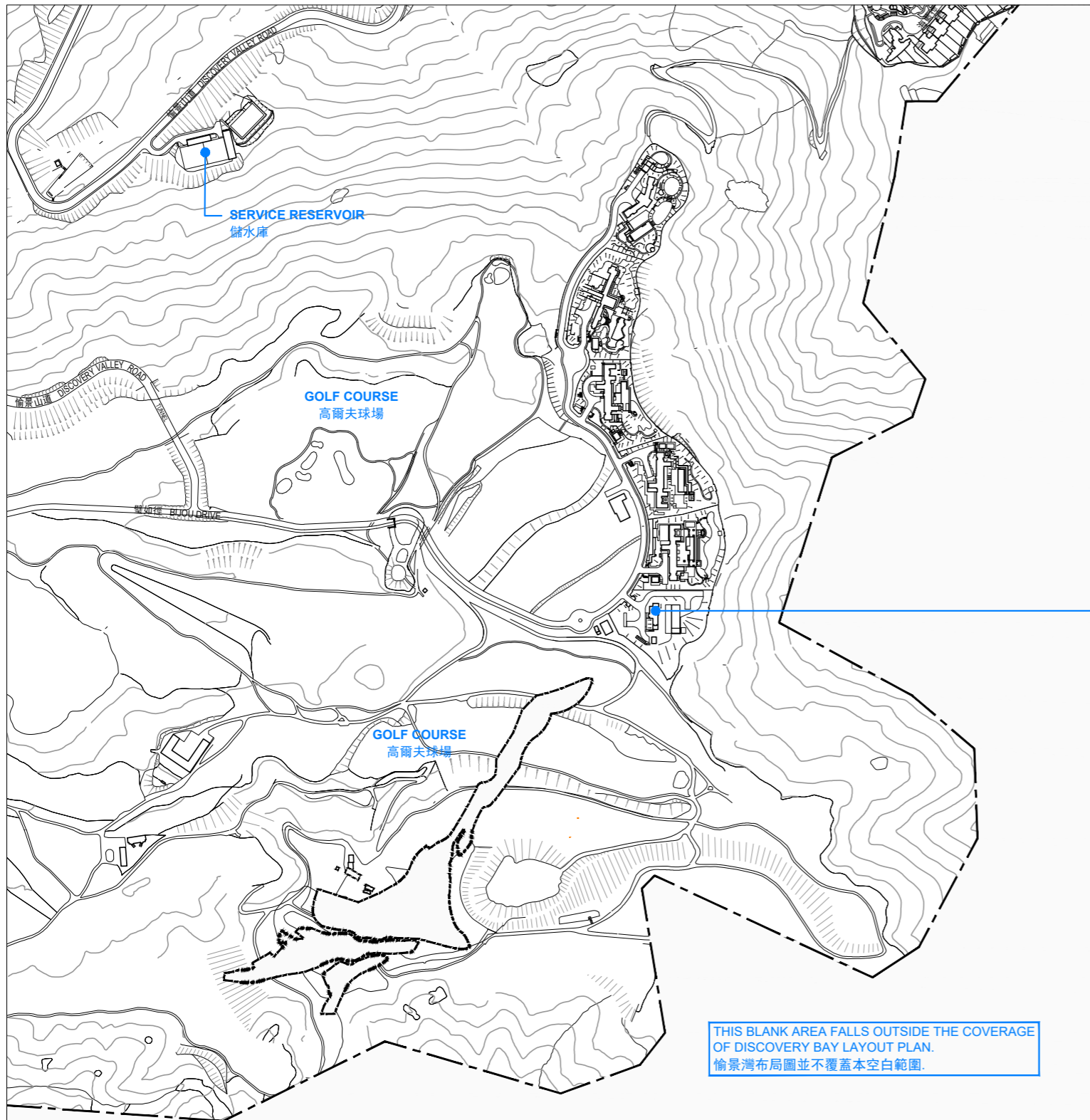
**GOLF CLUB**  
高爾夫球會



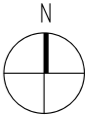
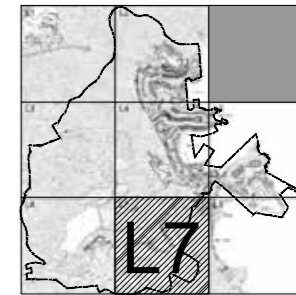
--- Boundary line of the Development  
發展項目的邊界



LAYOUT PLAN OF THE DEVELOPMENT  
發展項目的布局圖



Key Plan  
索引圖

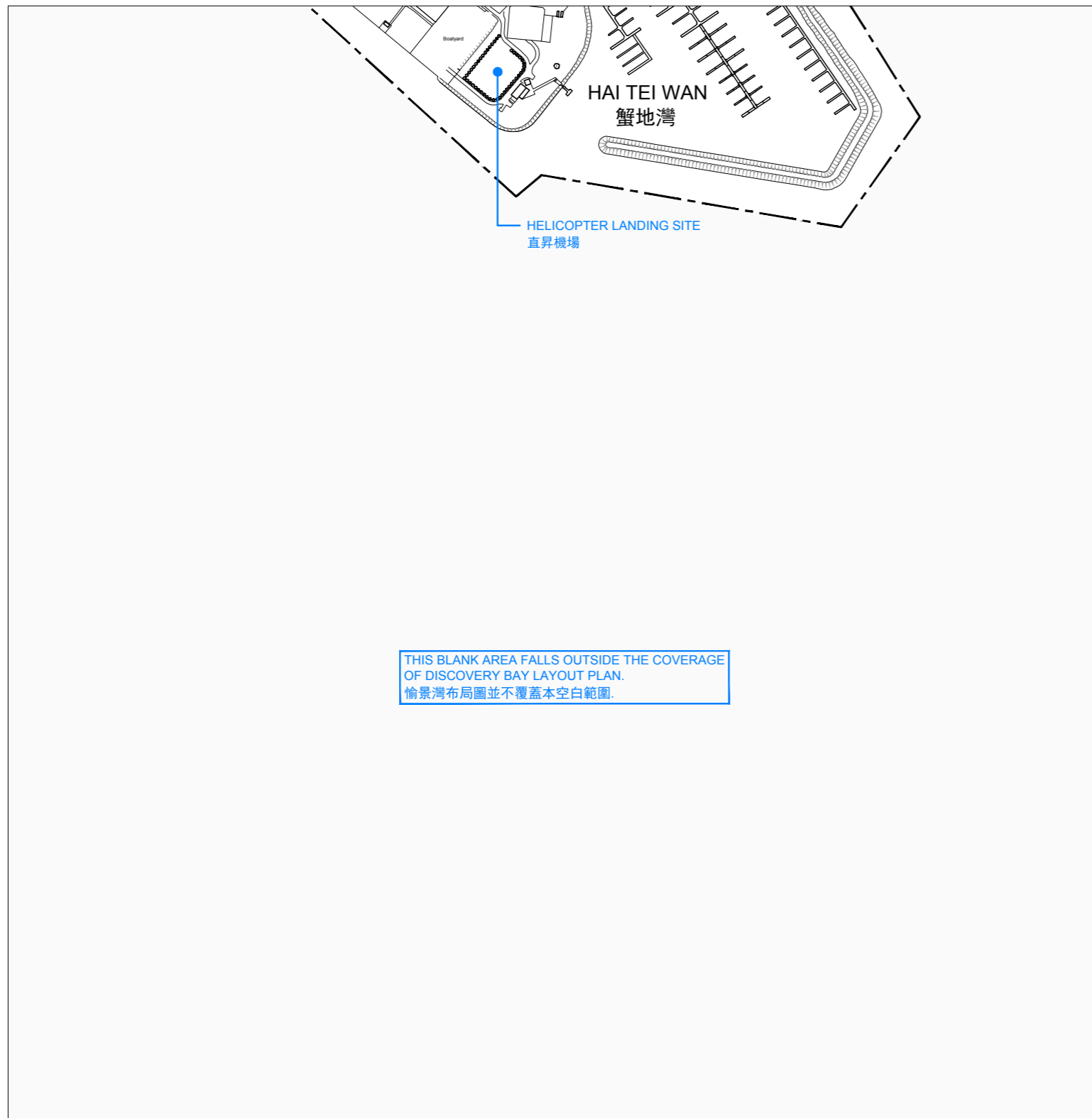


RESIDENTIAL DEVELOPMENT IN PROGRESS  
(THE ESTIMATED DATE OF COMPLETION OF THE BUILDING OR FACILITIES AS PROVIDED BY THE AUTHORIZED PERSON FOR THIS RESIDENTIAL DEVELOPMENT: 30 November 2020, SUBJECT TO REVISIONS FROM TIME TO TIME.)  
 施工中住宅發展項目  
 (本住宅發展項目的認可人士提供的建築物或設施的預計落成日期: 2020年11月30日, 該日期受制於不時之修訂.)

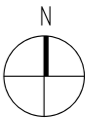
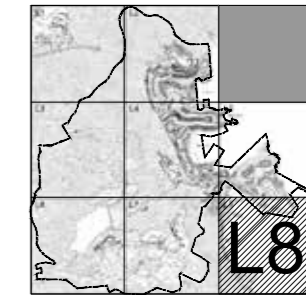
--- Boundary line of the Development  
發展項目的邊界

Scale: 0M/米 100M/米 200M/米 300M/米 400M/米 500M/米  
 比例:

LAYOUT PLAN OF THE DEVELOPMENT  
發展項目的布局圖



Key Plan  
索引圖



--- Boundary line of the Development  
發展項目的邊界

Scale: 0M/米 100M/米 200M/米 300M/米 400M/米 500M/米  
比例: