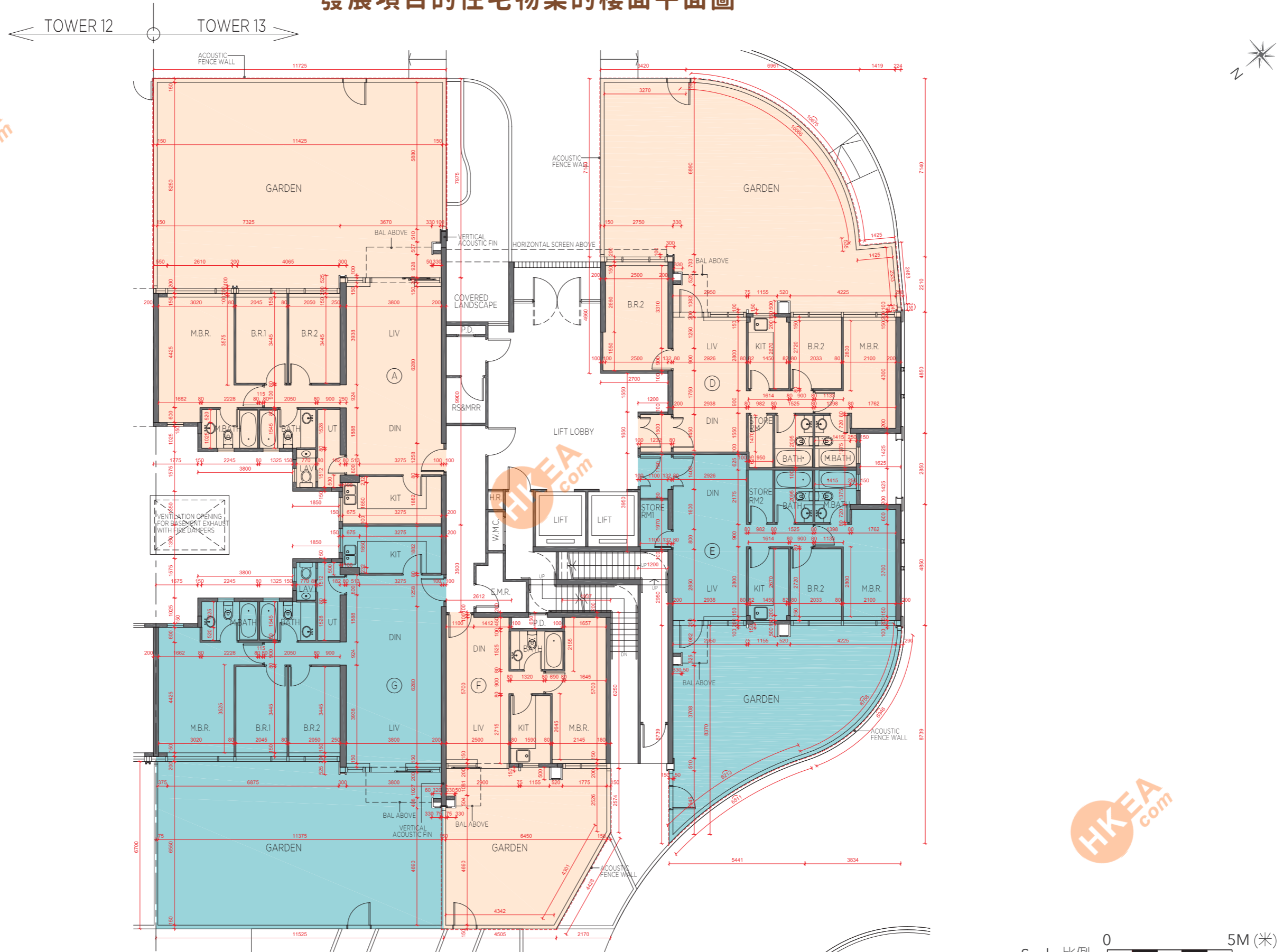


11 FLOOR PLANS OF RESIDENTIAL PROPERTIES IN THE DEVELOPMENT

發展項目的住宅物業的樓面平面圖

TOWER 13 G/F
第13座 地下



Scale 比例 0 5M (米)

Notes: 1. The dimensions in the floor plans are all structural dimension in millimetre.
2. Please refer to page 35 to 37 of this sales brochure for legend of the terms and abbreviations shown in the floor plan above and the explanatory notes that are applicable thereto.

備註: 1. 樓面平面圖所列之尺寸數字以毫米標示之建築結構尺寸。
2. 以上平面圖中顯示之、名詞及簡稱及其適用的附註，請參閱本售樓說明書第 35-37 頁。

11 FLOOR PLANS OF RESIDENTIAL PROPERTIES IN THE DEVELOPMENT

發展項目的住宅物業的樓面平面圖

TOWER 13 G/F
第13座 地下

	TOWER 大廈	UNIT 單位 FLOOR 樓層	A	D	E	F	G
			The thickness of the floor slabs (excluding plaster) of each residential property as provided in the approved building plans for the Development (mm) 按發展項目的經批准的建築圖則所規定者，每個住宅物業的樓板的厚度（不包括灰泥）（毫米）	Tower 13 第13座	G/F 地下	150, 200, 300	150, 175, 300
Floor-to-floor height (i.e. the height between the top surface of the structural slab of a floor and the top surface of the structural slab of its immediate upper floor) of each residential property as provided in the approved building plans for the Development (mm) 按發展項目的經批准的建築圖則所規定者，每個住宅物業的層與層之間的高度（指該樓層之石屎地台面與上一層石屎地台面之高度距離）（毫米）	3150*, 3500, 3900*	3150*, 3500, 3550*, 4200*	3150*, 3500, 3550*, 4200*			3150*, 3500, 3900*	3150*, 3500, 3900*

The internal areas of the residential properties on the upper floors will generally be slightly larger than those on the lower floors because of the reducing thickness of the structural walls on the upper floors.

因住宅物業的較高樓層的結構牆的厚度遞減，較高樓層的內部面積，一般比較低樓層的內部面積稍大。



*Inclusive of the thickness of mass concrete fill on sunken slab.

*包括跌級樓板上的混凝土填充層