

FLOOR PLANS OF RESIDENTIAL PROPERTIES IN THE DEVELOPMENT

發展項目的住宅物業的樓面平面圖

BLOCK H17 - H18, H19 - H20 & H21 第H17 - H18座，H19 - H20座及H21座

| Floor 樓層 | Flat 單位 | Floor-to-floor height of each residential property (mm) 每個住宅物業的層與層之間的高度 (毫米) | The thickness of the floor slabs (excluding plaster) of each residential property (mm) 每個住宅物業的樓板 (不包括灰泥) 的厚度 (毫米) |
|----------------------|------------|---|--|
| 2/F and 3/F 2樓及3樓 | H17-A | 2900, 3000, 3250 | 150 |
| | H17-B | 2900, 3000, 3250 | 150 |
| | H18-A | 2900, 3000, 3250 | 150 |
| | H18-B | 2900, 3000, 3250 | 150 |
| | H19-A | 2900, 3000, 3250 | 150 |
| | H19-B | 2900, 3000, 3250 | 150 |
| | H20-A | 2900, 3000, 3250 | 150 |
| | H20-B | 2900, 3000, 3250 | 150 |
| | H21-A | 2900, 3000, 3250 | 150 |
| | H21-B | 2900, 3000, 3250 | 150 |
| 5/F 5樓 | H17-A | 3250 | 150 |
| | H17-B | 3250 | 150 |
| | H18-A | 3250 | 150 |
| | H18-B | 3250 | 150 |
| | H19-A | 3250 | 150 |
| | H19-B | 3250 | 150 |
| | H20-A | 3250 | 150 |
| | H20-B | 3250 | 150 |
| | H21-A | 3250 | 150 |
| | H21-B | 3250 | 150 |

The internal areas of the residential properties on the upper floors will generally be slightly larger than those on the lower floors because of the reducing thickness of the structural walls on the upper floors.

因住宅物業的較高樓層的結構牆的厚度遞減，較高樓層的內部面積，一般比較低樓層的內部面積稍大。

Notes:

1. The dimensions in floor plans are all structural dimensions in millimetre.
2. Please refer to Page 26 of this sales brochure for remarks and legend of the terms and abbreviations shown on the floor plans.
3. 4/F is Omitted.

備註：

1. 樓層平面圖所列之尺寸數字為以毫米標示之建築結構尺寸。
2. 請參閱本售樓書第26頁之備註及圖例以協助解讀此部份的平面圖及其顯示之名詞及簡稱。
3. 不設4樓。

FLOOR PLANS OF RESIDENTIAL PROPERTIES IN THE DEVELOPMENT

發展項目的住宅物業的樓面平面圖

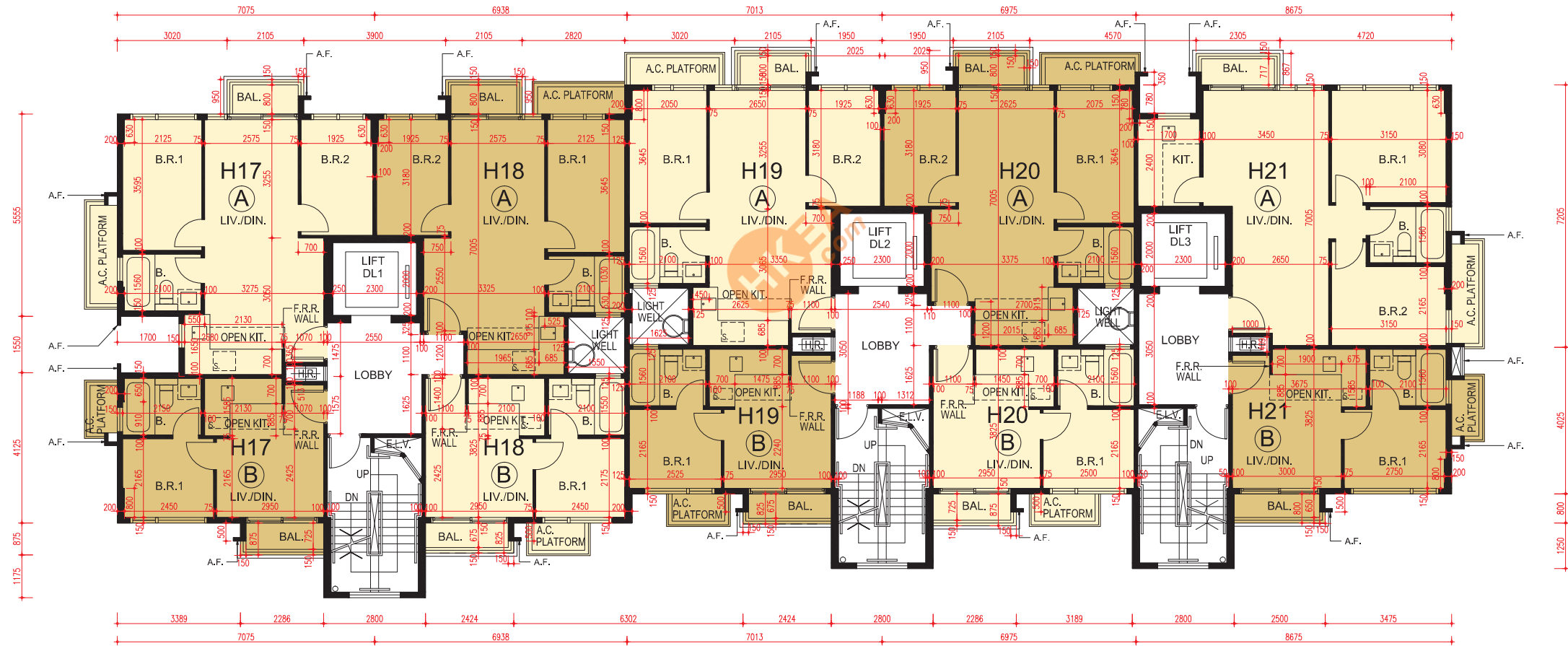
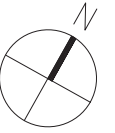
BLOCK H17 - H18, H19 - H20 & H21 第H17 - H18座，H19 - H20座及H21座

2/F - 3/F and 5/F FLOOR PLAN

(4/F is omitted)

2樓至3樓及5樓平面圖

(不設4樓)



SCALE 0M/米 10M/米
比例尺:

FLOOR PLANS OF RESIDENTIAL PROPERTIES IN THE DEVELOPMENT

發展項目的住宅物業的樓面平面圖

BLOCK H17 - H18, H19 - H20 & H21 第H17 - H18座，H19 - H20座及H21座

| Floor 樓層 | Flat 單位 | Floor-to-floor height of each residential property (mm) 每個住宅物業的層與層之間的高度 (毫米) | The thickness of the floor slabs (excluding plaster) of each residential property (mm) 每個住宅物業的樓板 (不包括灰泥) 的厚度 (毫米) |
|-------------|------------|---|--|
| Roof 天台 | H17-A | N/A 不適用 | N/A 不適用 |
| | H17-B | N/A 不適用 | N/A 不適用 |
| | H18-A | N/A 不適用 | N/A 不適用 |
| | H18-B | N/A 不適用 | N/A 不適用 |
| | H19-A | N/A 不適用 | N/A 不適用 |
| | H19-B | N/A 不適用 | N/A 不適用 |
| | H20-A | N/A 不適用 | N/A 不適用 |
| | H20-B | N/A 不適用 | N/A 不適用 |
| | H21-A | N/A 不適用 | N/A 不適用 |
| | H21-B | N/A 不適用 | N/A 不適用 |

The internal areas of the residential properties on the upper floors will generally be slightly larger than those on the lower floors because of the reducing thickness of the structural walls on the upper floors.

因住宅物業的較高樓層的結構牆的厚度遞減，較高樓層的內部面積，一般比較低樓層的內部面積稍大。

Notes:

- The dimensions in floor plans are all structural dimensions in millimetre.
- Please refer to Page 26 of this sales brochure for remarks and legend of the terms and abbreviations shown on the floor plans.

備註：

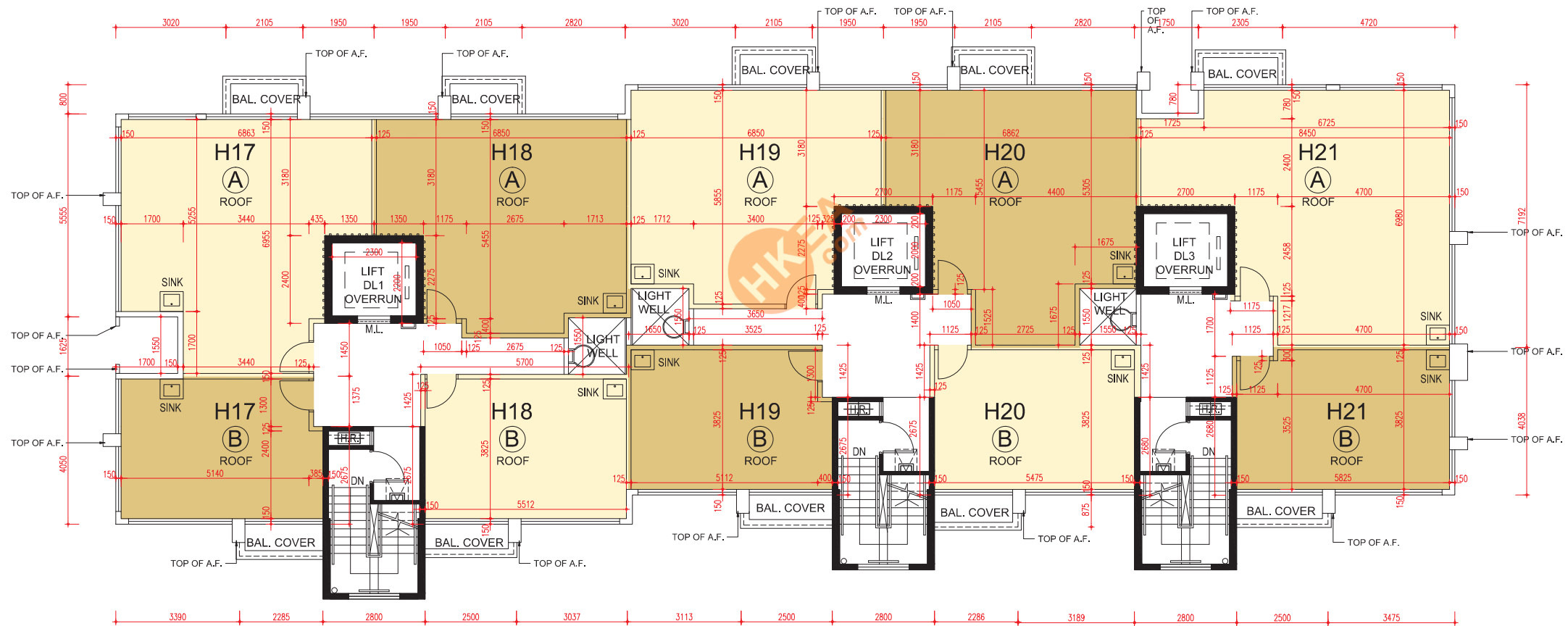
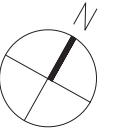
- 樓層平面圖所列之尺寸數字為以毫米標示之建築結構尺寸。
- 請參閱本售樓書第26頁之備註及圖例以協助解讀此部份的平面圖及其顯示之名詞及簡稱。

FLOOR PLANS OF RESIDENTIAL PROPERTIES IN THE DEVELOPMENT

發展項目的住宅物業的樓面平面圖

BLOCK H17 - H18, H19 - H20 & H21 第H17 - H18座，H19 - H20座及H21座

ROOF FLOOR PLAN
天台平面圖



SCALE 0M/米 10M/米
比例尺: