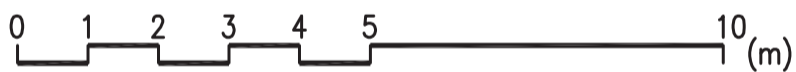
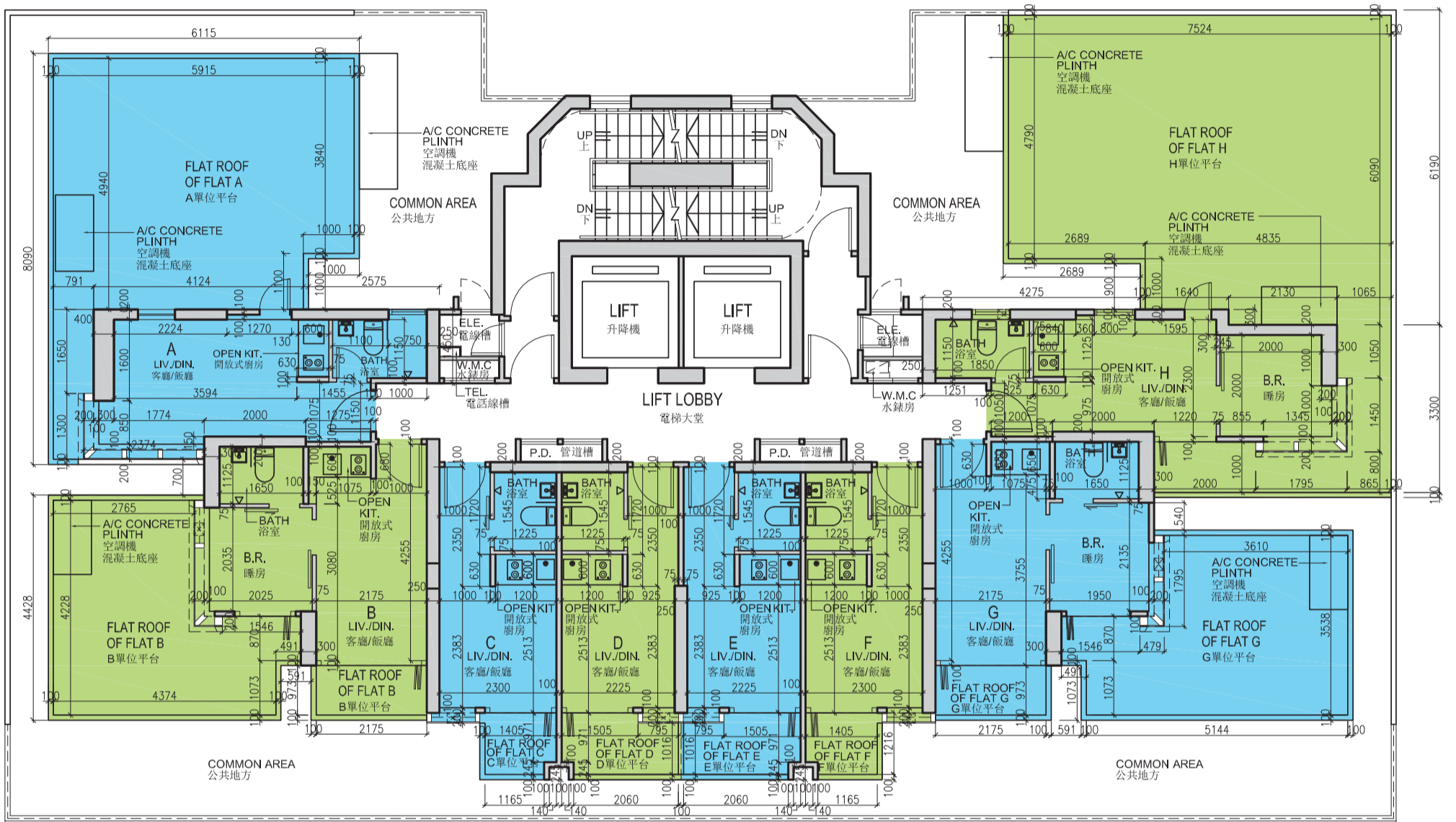


# 11 FLOOR PLANS OF RESIDENTIAL PROPERTIES IN THE DEVELOPMENT

## 發展項目的住宅物業的平面圖

### 2nd Floor Plan

### 2樓平面圖



2nd FLOOR PLAN  
2樓平面圖

1. Floor-to-floor height of Flat A to H on 2/F is 3.3m and 3.3m (inclusive of the sunken depth of the sunken slab on the floor of this floor (450mm)). Floor-to-floor height of each residential property refers to the height between the top surface of the structural slab of a floor and the top surface of the structural slab of its immediate upper floor.
2. The thickness of the floor slabs (excluding plaster): 150mm for Flat A, B, G and H. 175mm for Flat C, D, E and F.
3. The internal areas of the residential properties on the upper floors will generally be slightly larger than those on the lower floors because of the reducing thickness of the structural walls on the upper floors. (Not applicable)

Notes:

- (a) There may be architectural features and/or exposed pipes on external walls of some of the floors. For details, please refer to the latest approved general building plans and other relevant plans.
- (b) There may be air-conditioning conduits and/or mechanical and electrical services inside ceiling bulkheads or false ceiling in the residential properties.
- (c) The indications of fittings such as sinks, hobs, toilet bowls, wash basins etc. shown on the floor plan are indications of their approximate locations only and not indications of their actual size, designs and shapes.
- (d) All dimensions in the floor plan are in millimetres.

1. 2樓A至H單位的層與層之間的高度為3.3米及3.3米(包括本層地台跌級樓板之跌級深度(450毫米))。每個住宅物業的層與層之間的高度指該樓層之石屎地台面與上一層石屎地台面之高度距離。
2. 每個住宅單位的樓板(不包括灰泥)的厚度：150毫米(A, B, G及H單位)。175毫米(C, D, E及F單位)。
3. 因住宅物業的較高樓層的結構牆的厚度遞減，較高層的內部面積，一般比較低層的內部面積稍大。(不適用)

備註：

- (a) 部份樓層外牆範圍設有建築裝飾及/或外露喉管，詳細資料請參考最後批准之總建築圖則及其他相關圖則。
- (b) 住宅物業之裝飾橫樑或假天花內可能置有冷氣喉管及/或其他機電設備。
- (c) 平面圖所示之裝置如洗滌盤、煮食爐、坐廁、面盆等只供展示其大約位置而非展示其實際大小、設計及形狀。
- (d) 平面圖顯示之尺寸為毫米。