

10 發展項目的住宅物業的樓面平面圖
Floor Plans of Residential Properties in the Development



第1座地下平面圖
Tower 1, G/F Floor Plan



TOWER 1A ← → TOWER 1B



備註：第1座包括第1A座及第1B座
Note: Tower 1 comprising Tower 1A and Tower 1B

10 發展項目的住宅物業的樓面平面圖 Floor Plans of Residential Properties in the Development



第1座 Tower 1	樓層 Floor	第1A座 Tower 1A								第1B座 Tower 1B		
		A	B	C	D	E	F	G	H	A	B	C
層與層之間的高度(毫米) Floor-to-floor height (mm)	地下 G/F	3150, 3200, 3300, 3450, 3500	3300, 3450, 3500						3150, 3200, 3300, 3450, 3500	3150, 3450, 3500		
樓板厚度(毫米) Thickness of the floor slabs (mm)		150								150		

因住宅物業的較高樓層的結構牆的厚度遞減，較高樓層的內部面積，一般比較低樓層的內部面積稍大。

The internal areas of the residential properties on the upper floors will generally be slightly larger than those on the lower floors because of the reducing thickness of the structural walls on the upper floors.

備註：

- 樓面平面圖之尺規所列數字為以毫米標示之建築結構尺寸。
- 每個住宅物業的層與層之間的高度指該樓層之結構地台面與上一層結構地台面之高度距離。
- 每個住宅物業的樓板的厚度不包括灰泥。

Notes:

- The dimensions in the floor plans are all structural dimensions in millimetre.
- The floor-to-floor height refers to the height between the top surface of the structural slab of a floor and the top surface of the structural slab of its immediate upper floor of each residential property.
- The thickness of the floor slabs excludes plaster of each residential property.



備註：

- 第1座(由第1A座及第1B座組成)不設3樓、4樓、13樓及14樓。
- 第1座之第1A座20樓不設C及D單位。

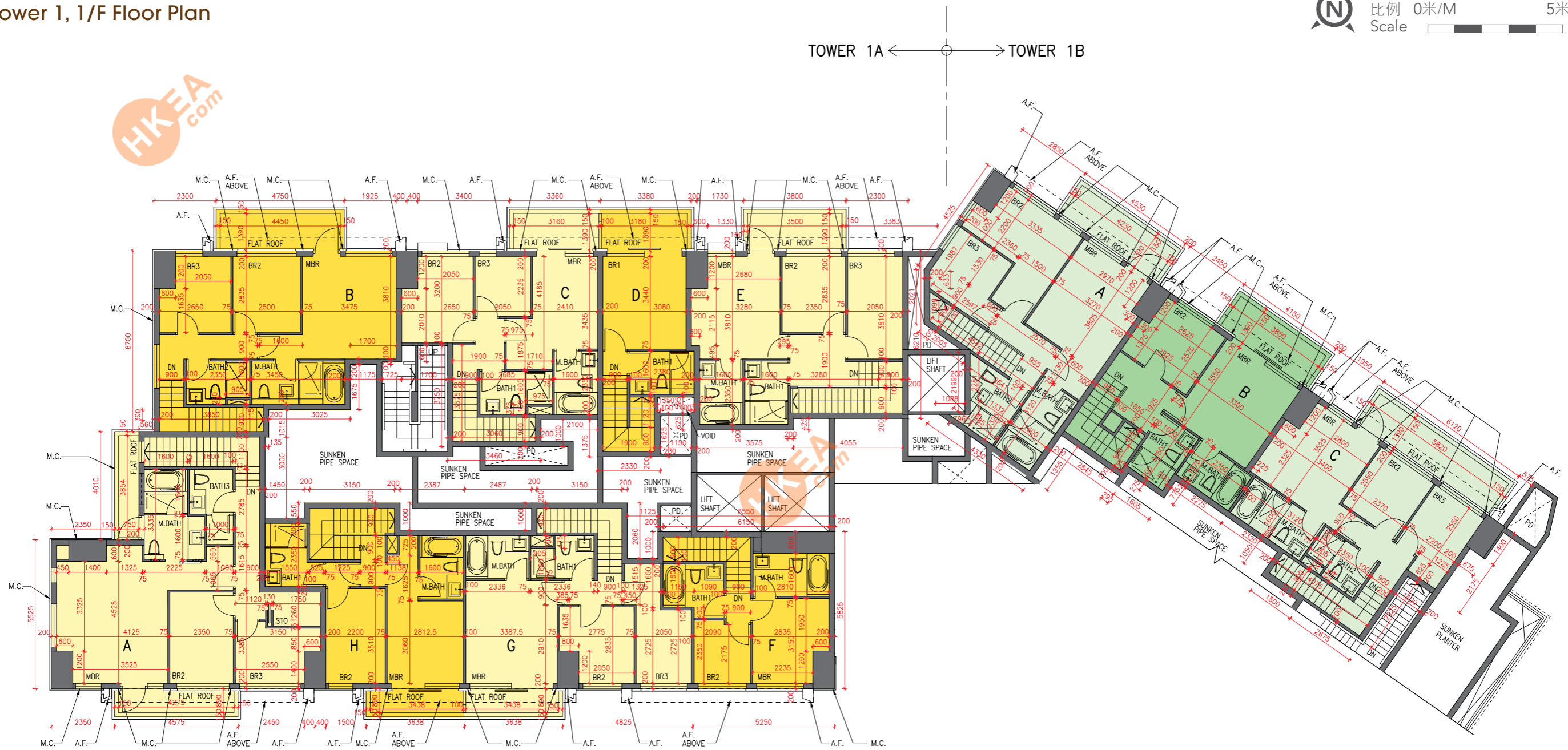
Notes:

- 3/F, 4/F, 13/F and 14/F are omitted in Tower 1 (comprising Tower 1A and Tower 1B).
- Flat C and D on 20/F in Tower 1A of Tower 1 are omitted.

10 發展項目的住宅物業的樓面平面圖
Floor Plans of Residential Properties in the Development



第1座1樓平面圖
Tower 1, 1/F Floor Plan



備註：第1座包括第1A座及第1B座
Note: Tower 1 comprising Tower 1A and Tower 1B

10 發展項目的住宅物業的樓面平面圖 Floor Plans of Residential Properties in the Development



第1座 Tower 1	樓層 Floor	第1A座 Tower 1A								第1B座 Tower 1B		
		A	B	C	D	E	F	G	H	A	B	C
層與層之間的高度(毫米) Floor-to-floor height (mm)	1樓 1/F	3260								3260		
樓板厚度(毫米) Thickness of the floor slabs (mm)		200								200		

因住宅物業的較高樓層的結構牆的厚度遞減，較高樓層的內部面積，一般比較低樓層的內部面積稍大。

The internal areas of the residential properties on the upper floors will generally be slightly larger than those on the lower floors because of the reducing thickness of the structural walls on the upper floors.

備註：

- 樓面平面圖之尺規所列數字為以毫米標示之建築結構尺寸。
- 每個住宅物業的層與層之間的高度指該樓層之結構地台面與上一層結構地台面之高度距離。
- 每個住宅物業的樓板的厚度不包括灰泥。

Notes:

- The dimensions in the floor plans are all structural dimensions in millimetre.
- The floor-to-floor height refers to the height between the top surface of the structural slab of a floor and the top surface of the structural slab of its immediate upper floor of each residential property.
- The thickness of the floor slabs excludes plaster of each residential property.



備註：

- 第1座(由第1A座及第1B座組成)不設3樓、4樓、13樓及14樓。
- 第1座之第1A座20樓不設C及D單位。

Notes:

- 3/F, 4/F, 13/F and 14/F are omitted in Tower 1 (comprising Tower 1A and Tower 1B).
- Flat C and D on 20/F in Tower 1A of Tower 1 are omitted.