

10 發展項目的住宅物業的樓面平面圖  
Floor Plans of Residential Properties in the Development



第2座20樓平面圖  
Tower 2, 20/F Floor Plan



TOWER 2A ← → TOWER 2B



備註：第2座包括第2A座及第2B座  
Note: Tower 2 comprising Tower 2A and Tower 2B

## 10 發展項目的住宅物業的樓面平面圖 Floor Plans of Residential Properties in the Development



第2座 Tower 2	樓層 Floor	第2A座 Tower 2A			第2B座 Tower 2B		
		A	B	E	A	B	C
層與層之間的高度(毫米) Floor-to-floor height (mm)	20樓 20/F	3500			3500		
樓板厚度(毫米) Thickness of the floor slabs (mm)		200			200		

因住宅物業的較高樓層的結構牆的厚度遞減，較高樓層的內部面積，一般比較低樓層的內部面積稍大。

The internal areas of the residential properties on the upper floors will generally be slightly larger than those on the lower floors because of the reducing thickness of the structural walls on the upper floors.

備註：

- 樓面平面圖之尺規所列數字為以毫米標示之建築結構尺寸。
- 每個住宅物業的層與層之間的高度指該樓層之結構地台面與上一層結構地台面之高度距離。
- 每個住宅物業的樓板的厚度不包括灰泥。

Notes:

- The dimensions in the floor plans are all structural dimensions in millimetre.
- The floor-to-floor height refers to the height between the top surface of the structural slab of a floor and the top surface of the structural slab of its immediate upper floor of each residential property.
- The thickness of the floor slabs excludes plaster of each residential property.



備註：

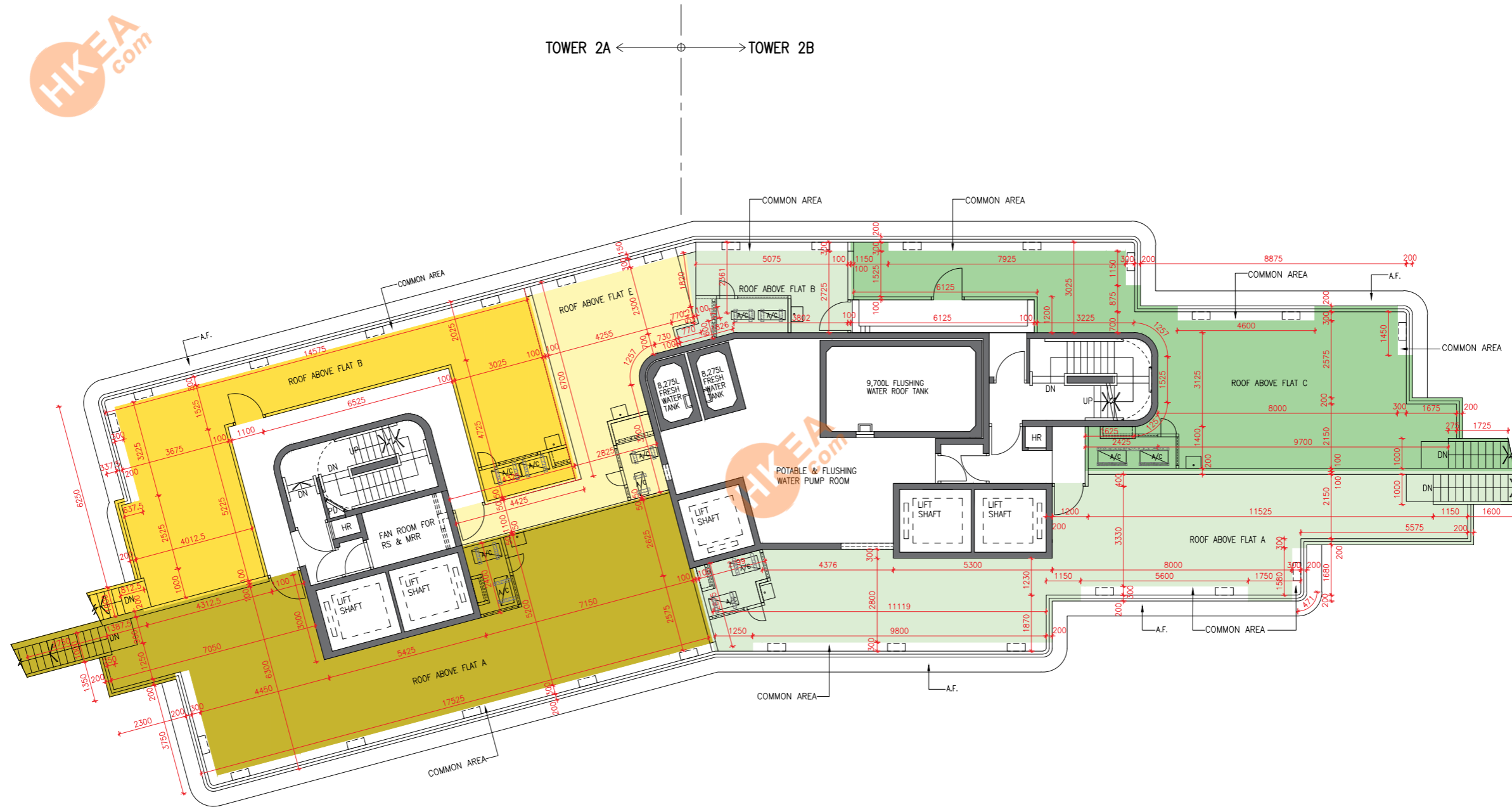
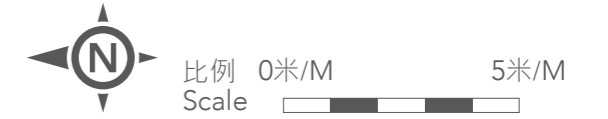
- 第2座(由第2A座及第2B座組成)不設4樓、13樓及14樓。
- 第2座之第2A座1樓不設A、B、C、D及E單位。
- 第2座之第2B座1樓不設B、C及F單位。
- 第2座之第2A座2樓及3樓不設A及B單位。
- 第2座之第2A座20樓不設C及D單位。

Notes:

- 4/F, 13/F and 14/F are omitted in Tower 2 (comprising Tower 2A and Tower 2B).
- Flat A, B, C, D and E on 1/F in Tower 2A of Tower 2 are omitted.
- Flat B, C and F on 1/F in Tower 2B of Tower 2 are omitted.
- Flat A and B on 2/F and 3/F in Tower 2A of Tower 2 are omitted.
- Flat C and D on 20/F in Tower 2A of Tower 2 are omitted.



第2座天台平面圖  
Tower 2, Roof Floor Plan



備註：第2座包括第2A座及第2B座  
Note: Tower 2 comprising Tower 2A and Tower 2B

## 10 發展項目的住宅物業的樓面平面圖 Floor Plans of Residential Properties in the Development



第2座 Tower 2	樓層 Floor	第2A座 Tower 2A			第2B座 Tower 2B		
		A	B	E	A	B	C
層與層之間的高度 (毫米) Floor-to-floor height (mm)	天台 ROOF	不適用 N/A			不適用 N/A		
樓板厚度 (毫米) Thickness of the floor slabs (mm)		不適用 N/A			不適用 N/A		

因住宅物業的較高樓層的結構牆的厚度遞減，較高樓層的內部面積，一般比較低樓層的內部面積稍大。

The internal areas of the residential properties on the upper floors will generally be slightly larger than those on the lower floors because of the reducing thickness of the structural walls on the upper floors.

備註：

- 樓面平面圖之尺規所列數字為以毫米標示之建築結構尺寸。
- 每個住宅物業的層與層之間的高度指該樓層之結構地台面與上一層結構地台面之高度距離。
- 每個住宅物業的樓板的厚度不包括灰泥。

Notes:

- The dimensions in the floor plans are all structural dimensions in millimetre.
- The floor-to-floor height refers to the height between the top surface of the structural slab of a floor and the top surface of the structural slab of its immediate upper floor of each residential property.
- The thickness of the floor slabs excludes plaster of each residential property.



備註：

- 第2座(由第2A座及第2B座組成)不設4樓、13樓及14樓。
- 第2座之第2A座1樓不設A、B、C、D及E單位。
- 第2座之第2B座1樓不設B、C及F單位。
- 第2座之第2A座2樓及3樓不設A及B單位。
- 第2座之第2A座20樓不設C及D單位。

Notes:

- 4/F, 13/F and 14/F are omitted in Tower 2 (comprising Tower 2A and Tower 2B).
- Flat A, B, C, D and E on 1/F in Tower 2A of Tower 2 are omitted.
- Flat B, C and F on 1/F in Tower 2B of Tower 2 are omitted.
- Flat A and B on 2/F and 3/F in Tower 2A of Tower 2 are omitted.
- Flat C and D on 20/F in Tower 2A of Tower 2 are omitted.