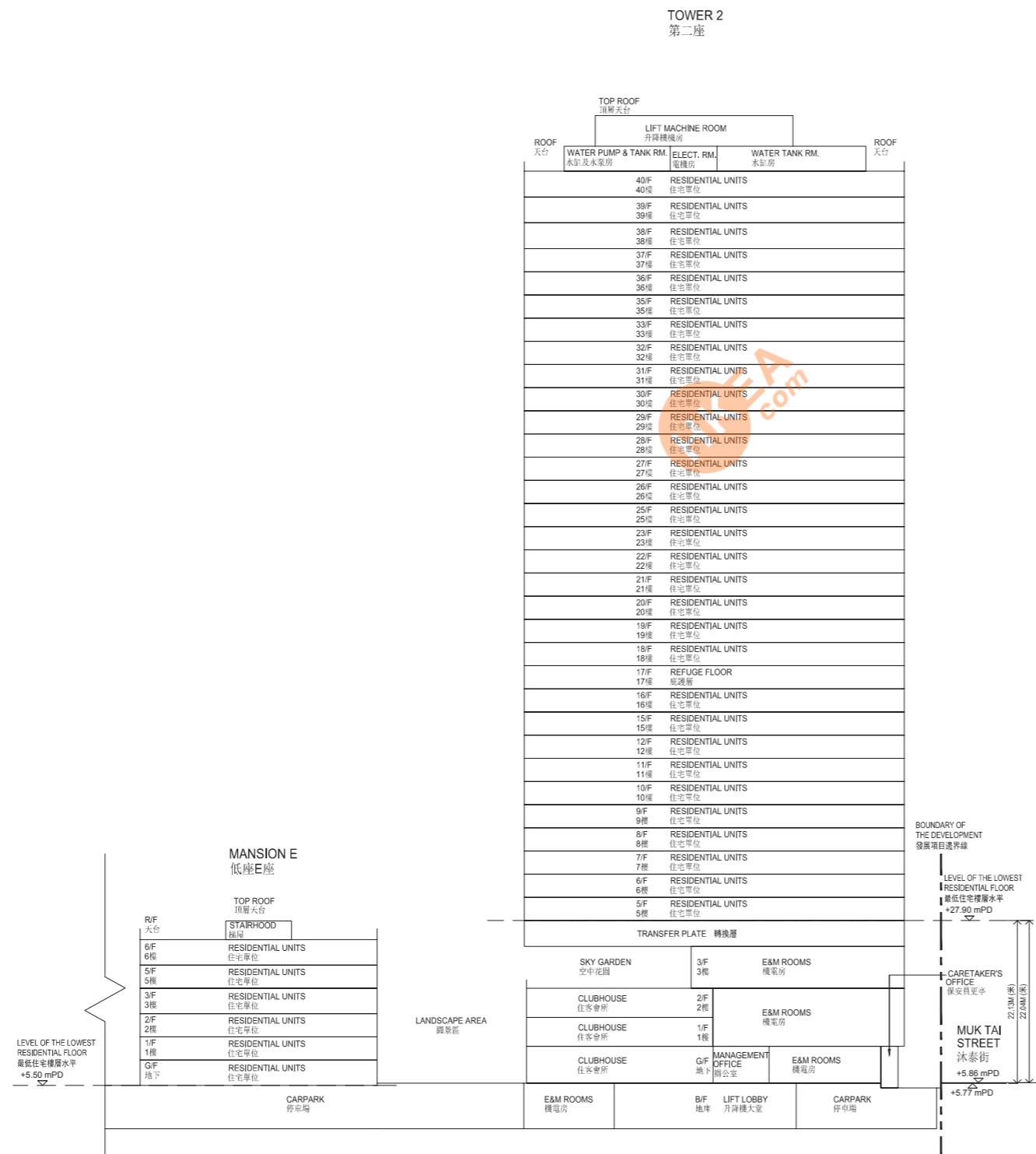
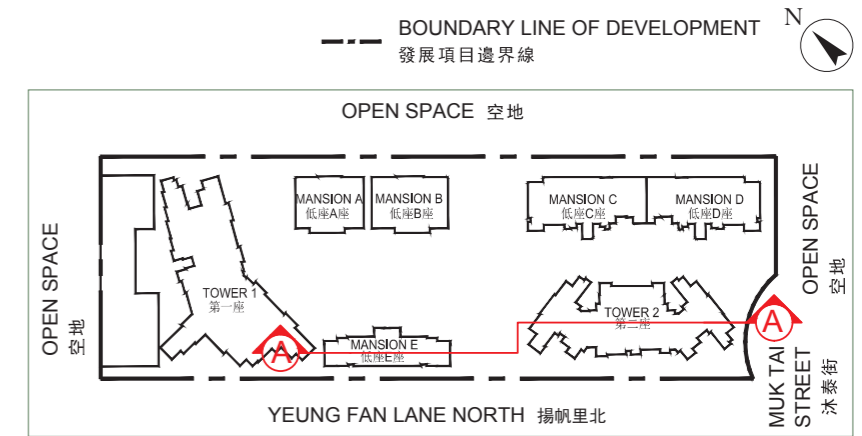




**CROSS-SECTION PLAN A-A  
橫截面圖 A-A**



**Key Plan 索引圖**

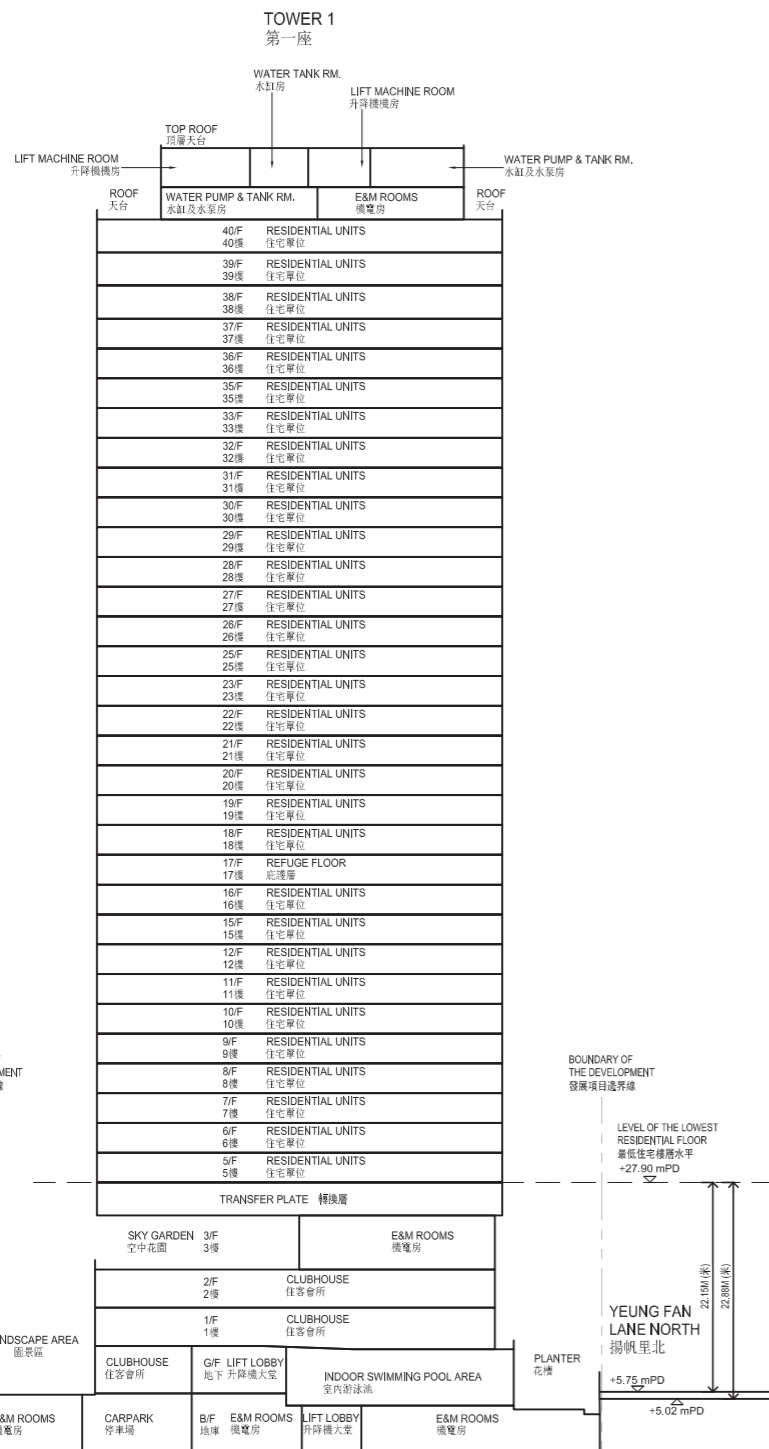


- The part of Muk Tai Street adjacent to the building (Tower 2) is 5.77 metres to 5.86 metres above the Hong Kong Principal Datum.
  - ▽ Denotes height (in metres) above Hong Kong Principal Datum (PD).
- 毗連建築物(第二座)的一段沐泰街為香港主水平基準以上5.77米至5.86米。
  - ▽ 代表香港主水平基準以上高度(米)。

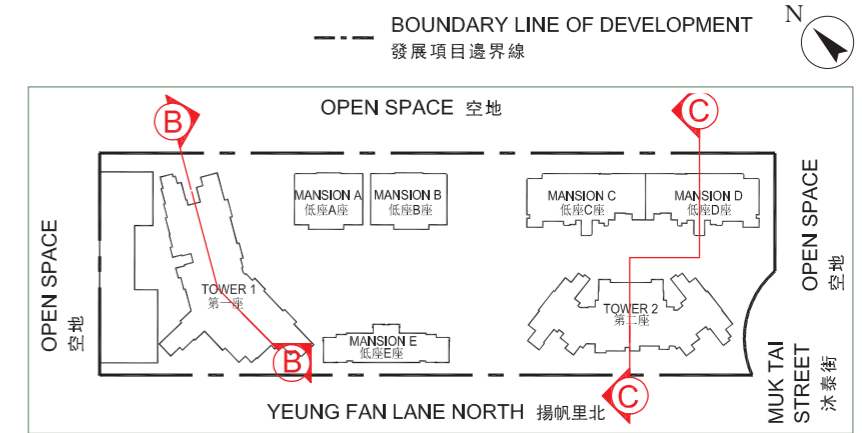
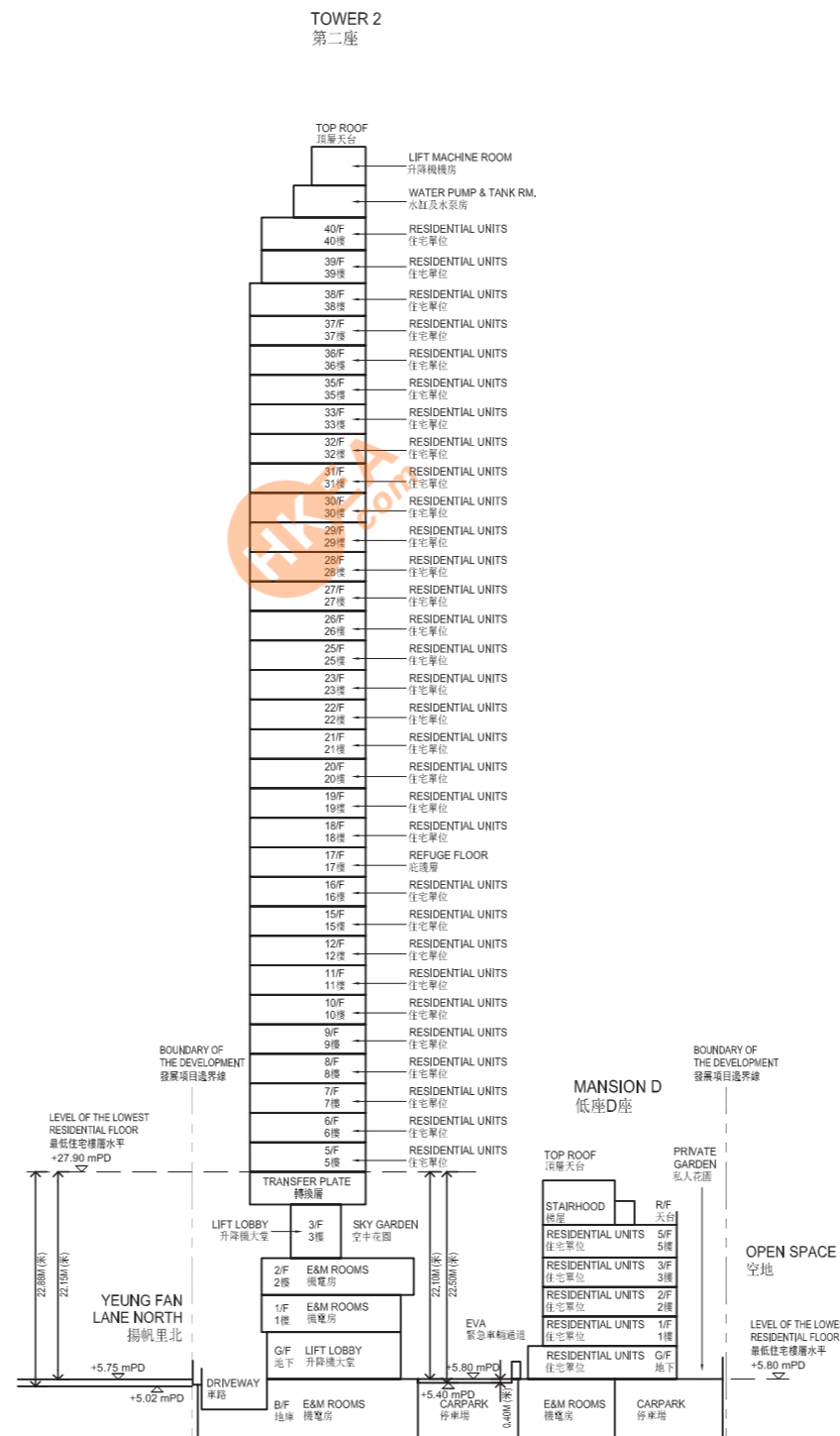


### Key Plan 索引圖

#### CROSS-SECTION PLAN B-B 橫截面圖 B-B



#### CROSS-SECTION PLAN C-C 橫截面圖 C-C

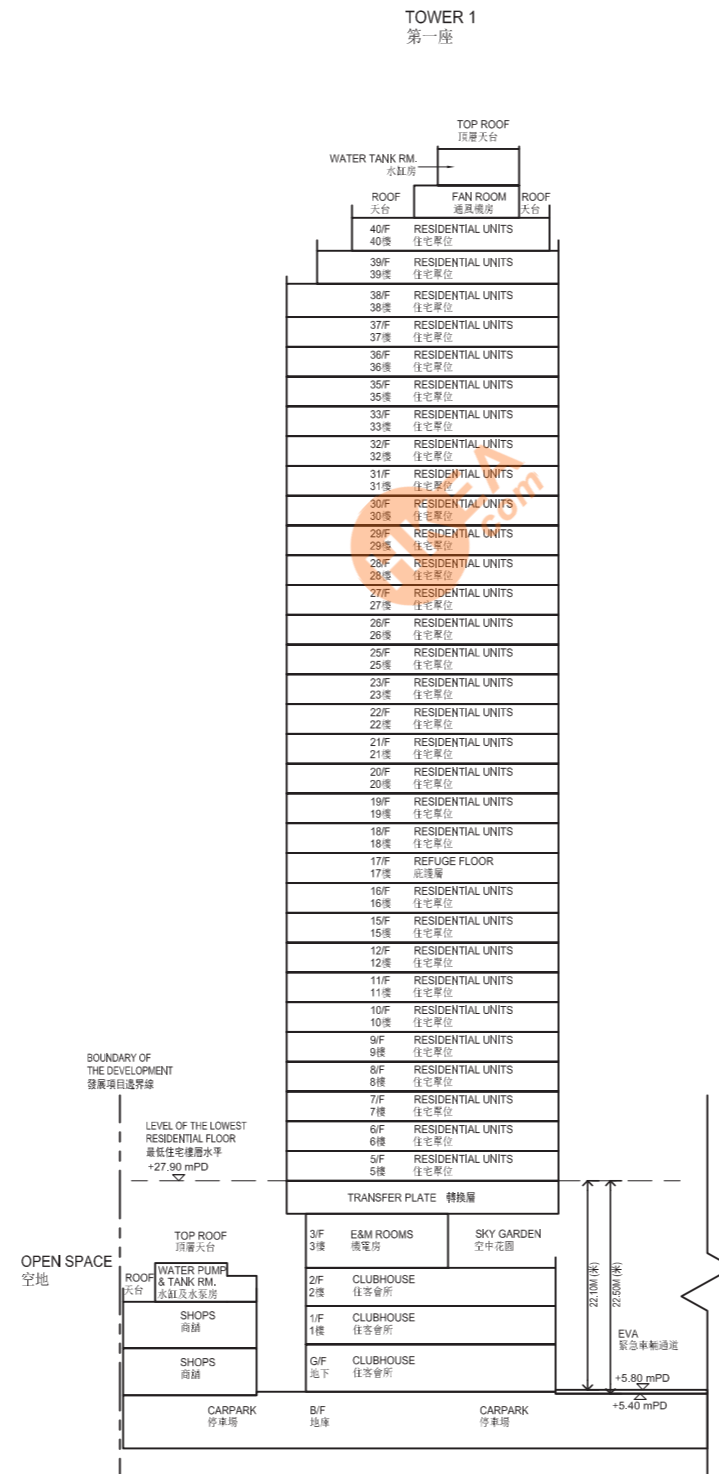


- The part of Yeung Fan Lane North adjacent to the building (Tower 1 and Tower 2) is 5.02 metres to 5.75 metres above the Hong Kong Principal Datum.
  - The part of Emergency Vehicular Access (EVA) adjacent to the building (Tower 2 and Mansion D) is 5.40 metres to 5.80 metres above the Hong Kong Principal Datum.
  - ▽ Denotes height (in metres) above Hong Kong Principal Datum (PD).
- 毗連建築物(第一座及第二座)的一段揚帆里北為香港主水平基準以上5.02米至5.75米。
  - 毗連建築物(第二座及低座D座)的一段緊急車輛通道為香港主水平基準以上5.40米至5.80米。
  - ▽ 代表香港主水平基準以上高度(米)。

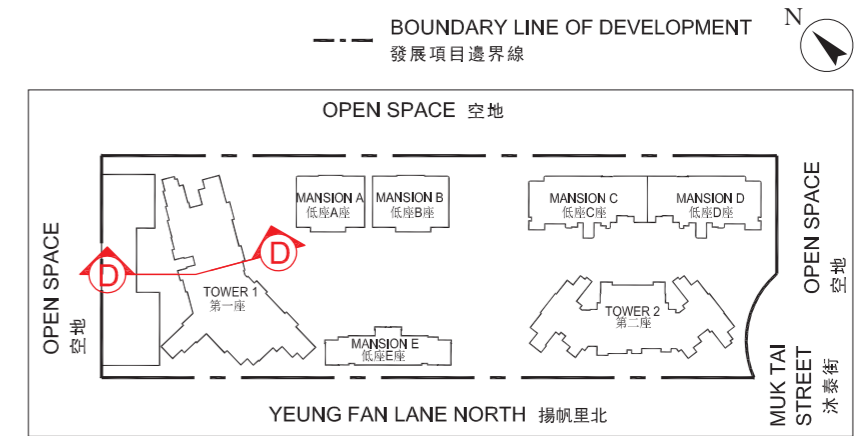




**CROSS-SECTION PLAN D-D**  
橫截面圖 D-D



**Key Plan 索引圖**



1. The part of Emergency Vehicular Access (EVA) adjacent to the building is 5.40 metres to 5.80 metres above the Hong Kong Principal Datum.

2. ▽ Denotes height (in metres) above Hong Kong Principal Datum (PD).

1. 毗連建築物的一段緊急車輛通道為香港主水平基準以上5.40米至5.80米。

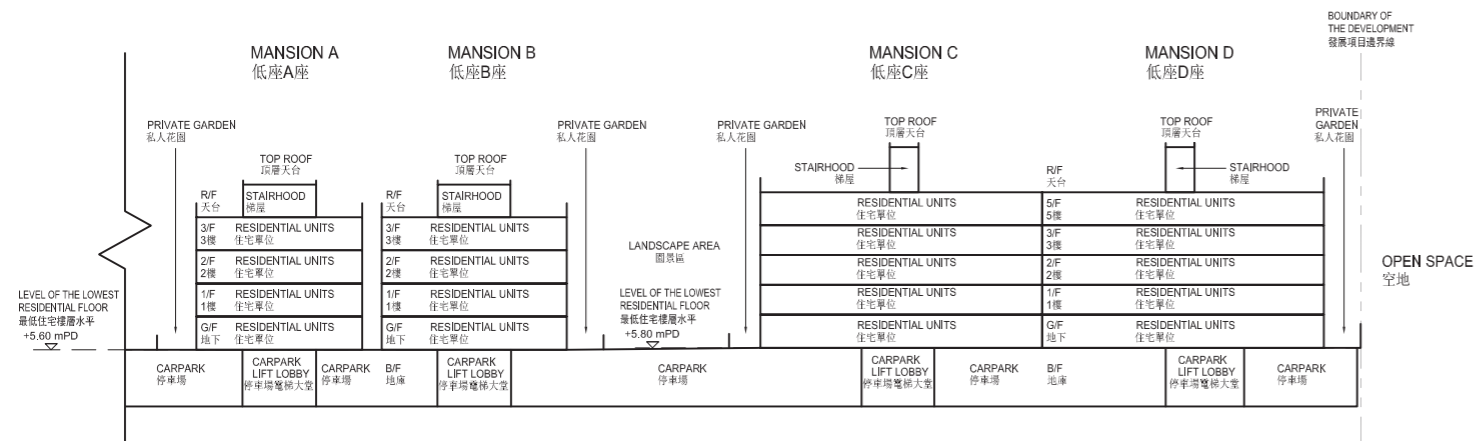
2. ▽ 代表香港主水平基準以上高度(米)。



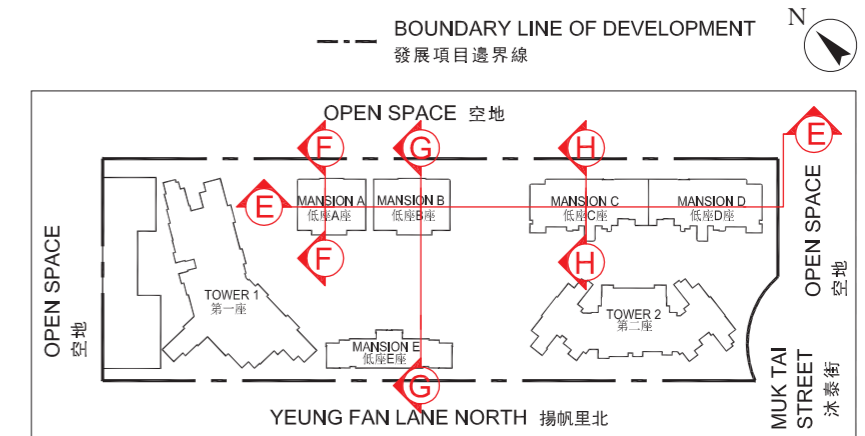
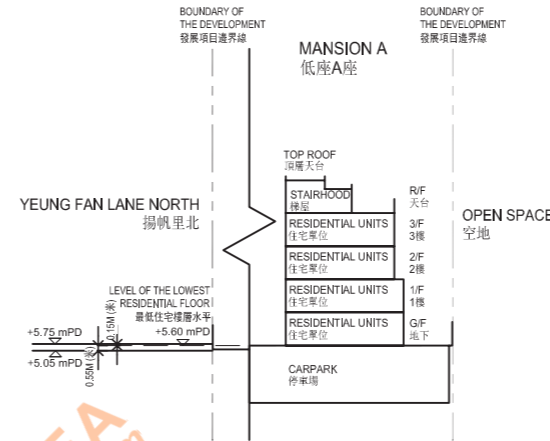
### Key Plan 索引圖



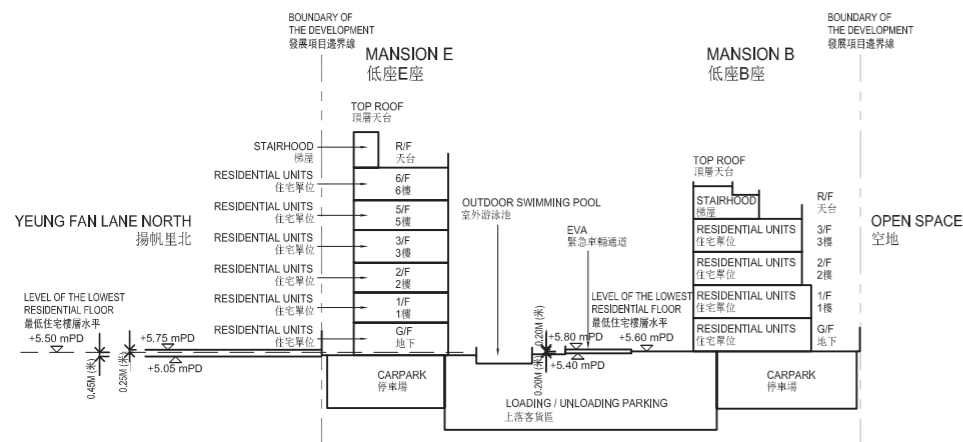
**CROSS-SECTION PLAN E-E  
橫截面圖 E-E**



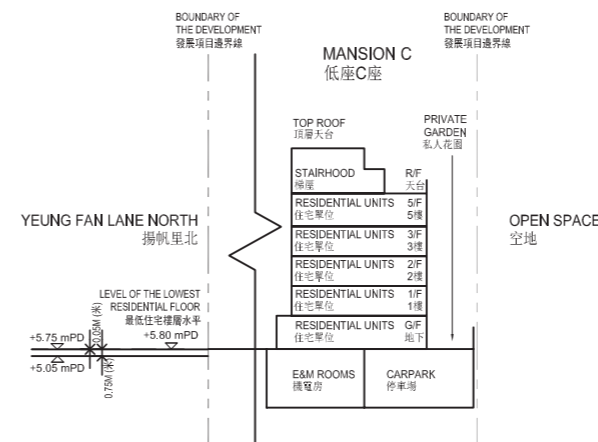
**CROSS-SECTION PLAN F-F  
橫截面圖 F-F**



**CROSS-SECTION PLAN G-G  
橫截面圖 G-G**



**CROSS-SECTION PLAN H-H  
橫截面圖 H-H**



1. The part of Yeung Fan Lane North adjacent to the building is 5.05metres to 5.75 metres above the Hong Kong Principal Datum.
2. The part of Emergency Vehicular Access (EVA) adjacent to the building is 5.40 metres to 5.80 metres above the Hong Kong Principal Datum.
3. ▽ Denotes height (in metres) above Hong Kong Principal Datum (PD).

1. 毗連建築物的一段揚帆里北為香港主水平基準以上5.05米至5.75米。
2. 毗連建築物的一段緊急車輛通道為香港主水平基準以上5.40米至5.80米。
3. ▽ 代表香港主水平基準以上高度(米)。

