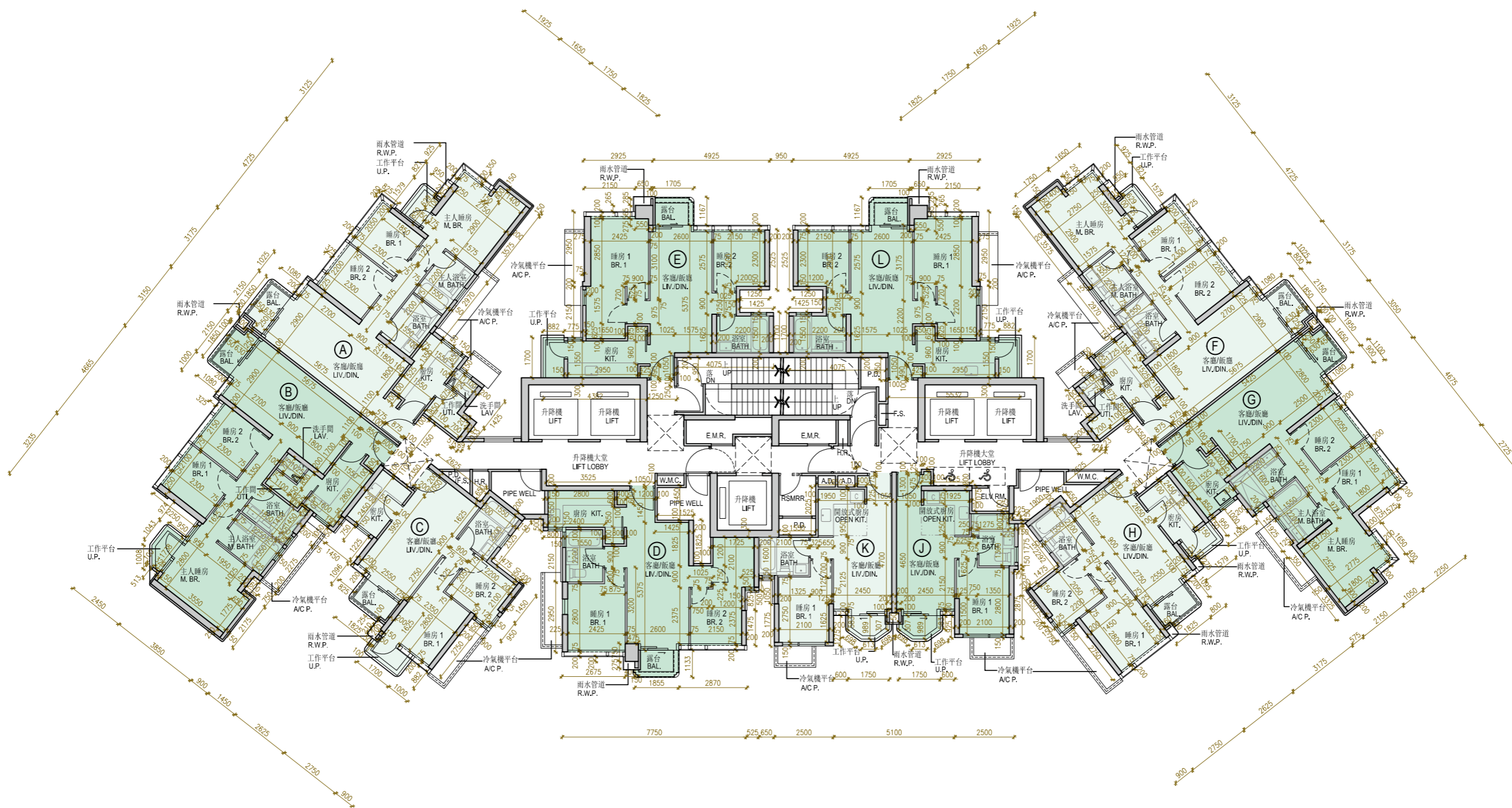


TOWER 2  
第2座

6/F-12/F, 15/F&16/F FLOOR PLAN  
6樓至12樓，15樓及16樓樓面平面圖



Scale 比例 0 5 Metres/米

**TOWER 2**      **6/F-12/F, 15/F&16/F FLOOR PLAN**  
**第2座**        **6樓至12樓，15樓及16樓樓面平面圖**

|   | Block Name<br>大廈名稱 | Floor 樓層                    | Units 單位               |                        |                        |                        |                        |                        |                        |                        |                        |                        |                        |
|---|--------------------|-----------------------------|------------------------|------------------------|------------------------|------------------------|------------------------|------------------------|------------------------|------------------------|------------------------|------------------------|------------------------|
|   |                    |                             | A                      | B                      | C                      | D                      | E                      | F                      | G                      | H                      | J                      | K                      | L                      |
| The thickness of the floor slabs (excluding plaster) of Each Residential Property (mm)<br>每個住宅物業的樓板(不包括灰泥)的厚度(毫米) | Tower 2<br>第2座     | 6/F-12/F&15/F<br>6樓至12樓及15樓 | 150                    | 150                    | 150                    | 150                    | 150                    | 150                    | 150                    | 150                    | 150                    | 150                    | 150                    |
| The floor-to-floor height of Each Residential Property (mm)<br>每個住宅物業的層與層之間的高度(毫米)                                |                    |                             | 3150                   | 3150                   | 3150                   | 3150                   | 3150                   | 3150                   | 3150                   | 3150                   | 3150                   | 3150                   | 3150                   |
| The thickness of the floor slabs (excluding plaster) of Each Residential Property (mm)<br>每個住宅物業的樓板(不包括灰泥)的厚度(毫米) |                    | 16/F<br>16樓                 | 150                    | 150                    | 150                    | 150                    | 150                    | 150                    | 150                    | 150                    | 150                    | 150                    | 150                    |
| The floor-to-floor height of Each Residential Property (mm)<br>每個住宅物業的層與層之間的高度(毫米)                                |                    |                             | 3150,<br>3400,<br>3500 | 3150,<br>3400,<br>3500 | 3150,<br>3400,<br>3500 | 3150,<br>3400,<br>3500 | 3150,<br>3400,<br>3500 | 3150,<br>3400,<br>3500 | 3150,<br>3400,<br>3500 | 3150,<br>3450,<br>3500 | 3150,<br>3400,<br>3500 | 3150,<br>3450,<br>3500 | 3150,<br>3400,<br>3500 |

The internal areas of the residential properties on the upper floors will generally be slightly larger than those on the lower floors because of the reducing thickness of the structural walls on the upper floors. This statement required in section 10(2)(e) of Part 1 of Schedule 1 to the Residential Properties (First-hand Sales) Ordinance is not applicable for this Development.

Remarks:

- The dimensions of floor plans are all structural dimensions in millimetre.
- Please refer to p.27 & p.28 of this Sales Brochure for legend of the terms and abbreviations shown in and remarks applicable to the floor plan.
- Unit I is omitted.
- 4/F, 13/F, 14/F, 24/F and 34/F are omitted.
- 17/F is a refuge floor containing no residential property.
- The figures have been rounded down to the nearest integer.

因住宅物業的較高樓層的結構牆的厚度遞減，較高樓層的內部面積，一般比較低樓層的內部面積稍大。此乃根據《一手住宅物業銷售條例》附表1第1部第10(2)(e)條所規定的陳述不適用於此發展項目。

備註：

- 樓面平面圖所列之尺寸數字為以毫米標示的建築結構尺寸。
- 有關樓面平面圖中顯示之名詞及簡稱之圖例及通用之附註請參閱本售樓說明書第27至28頁。
- 不設單位 I。
- 不設4樓、13樓、14樓、24樓及34樓。
- 17樓為庇護層，不設任何住宅物業。
- 有關數字降低到最接近整數。