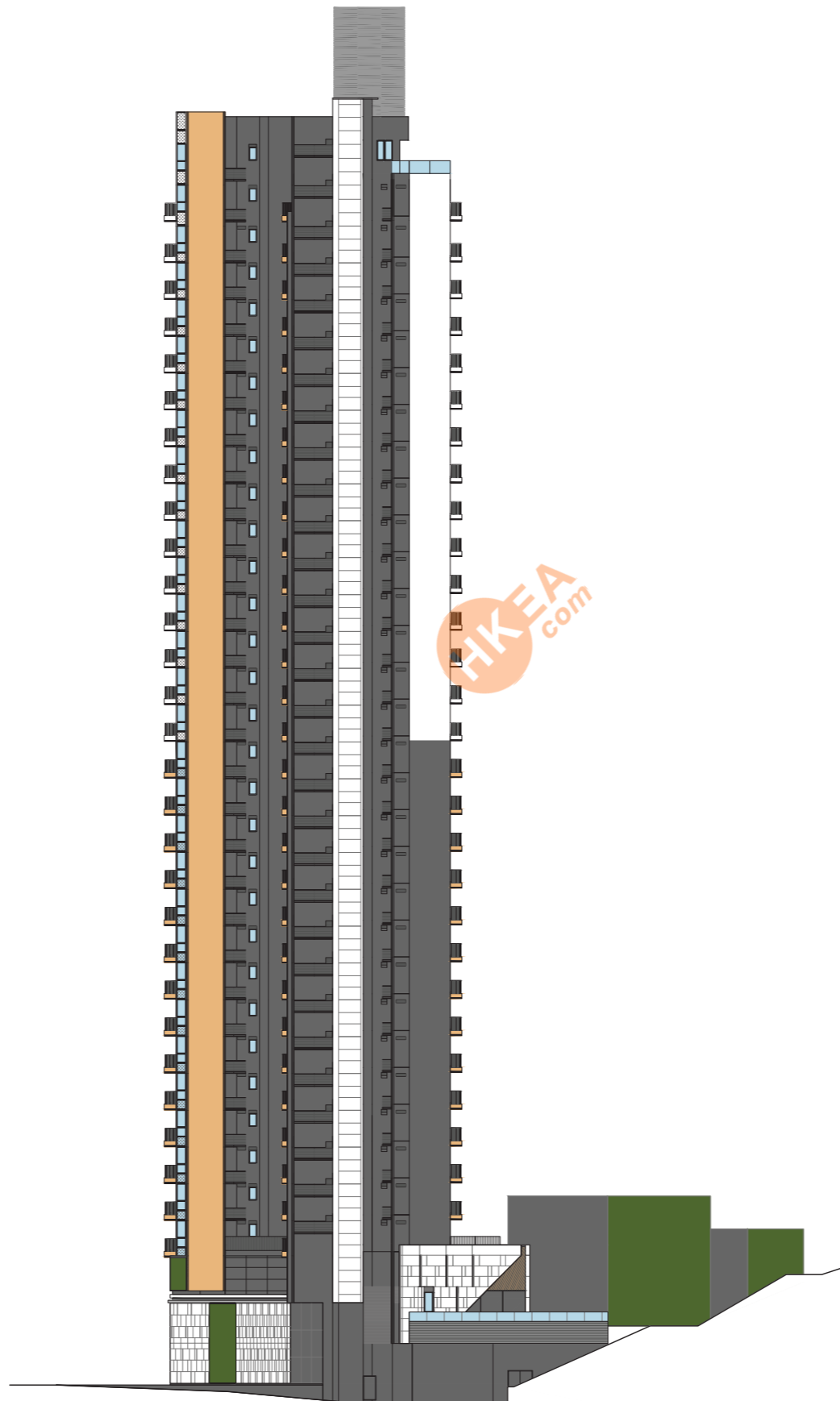


Tower 1 & Tower 1A  
第 1 座及第 1A 座

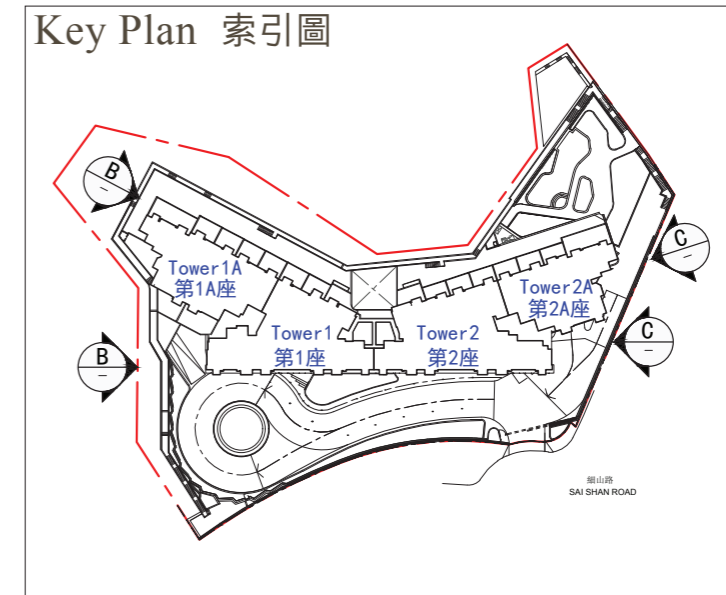


ELEVATION PLAN B  
立面圖 B

Tower 2 & Tower 2A  
第 2 座及第 2A 座



ELEVATION PLAN C  
立面圖 C



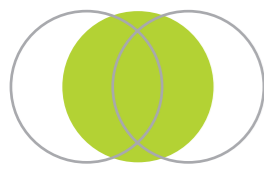
The Authorized Person for the Development certified that the elevations shown on this elevation plan:

1. are prepared on the basis of the approved building plans for the Development as of 13th July 2020; and
2. are in general accordance with the outward appearance of the Development.

發展項目的認可人士證明本立面圖所顯示的立面：

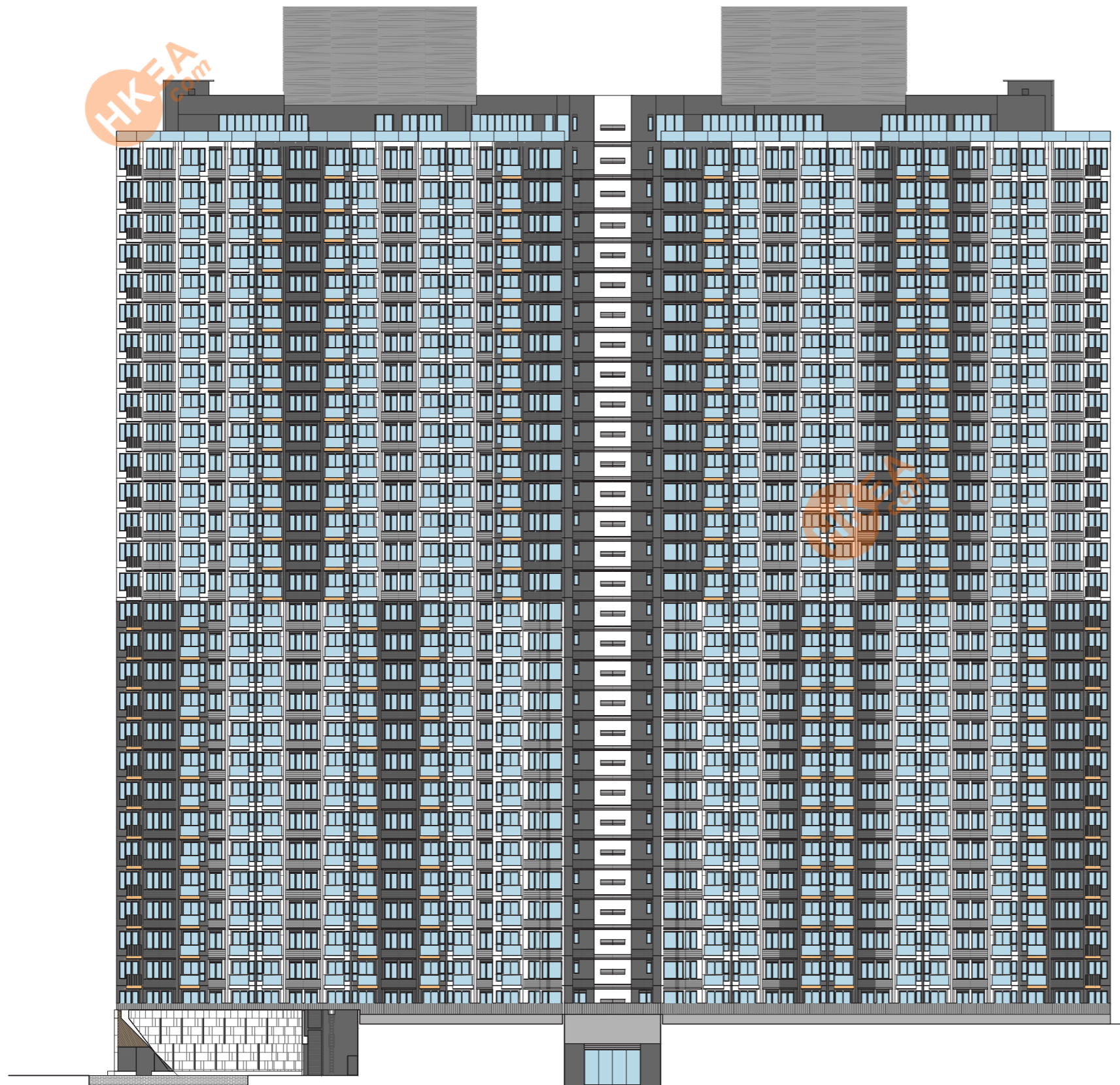
1. 以2020年7月13日的情況為準的發展項目的經批准的建築圖則為基礎擬備；及
2. 大致上與發展項目的外觀一致。



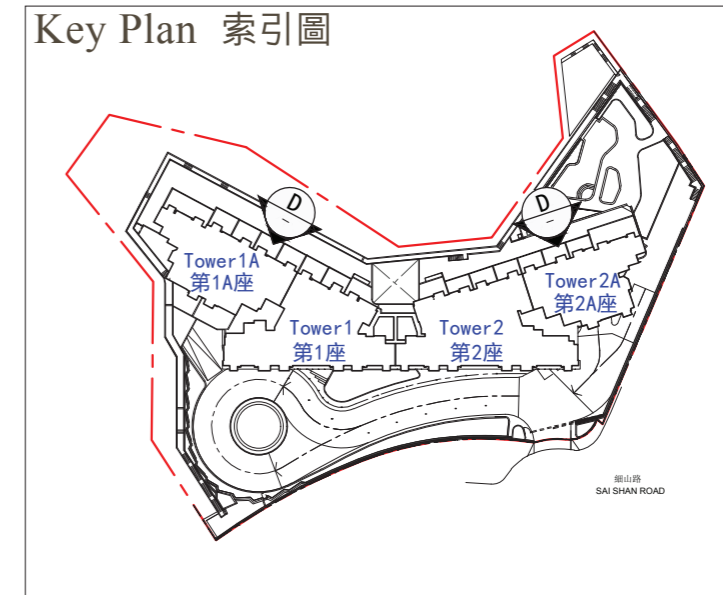


Tower 2 & Tower 2A  
第 2 座及第 2A 座

Tower 1 & Tower 1A  
第 1 座及第 1A 座



Key Plan 索引圖



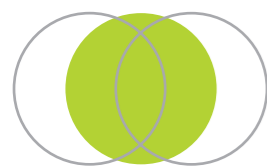
The Authorized Person for the Development certified that the elevations shown on this elevation plan:

1. are prepared on the basis of the approved building plans for the Development as of 13th July 2020; and
2. are in general accordance with the outward appearance of the Development.

發展項目的認可人士證明本立面圖所顯示的立面：

1. 以2020年7月13日的情況為準的發展項目的經批准的建築圖則為基礎擬備；及
2. 大致上與發展項目的外觀一致。





## 21 | INFORMATION ON COMMON FACILITIES IN THE DEVELOPMENT

發展項目中的公用設施的資料

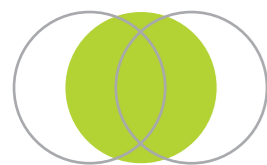
Category of Common Facilities 公用設施的類別		Covered Area 有蓋範圍	Uncovered Area 無蓋範圍	Total Area 總面積
Residents' clubhouse (including any recreational facilities for residents' use) 住客會所 (包括供住客使用的任何康樂設施)	Area (sq.ft.) 面積 (平方呎)	17795	1167	18961
	Area (sq.m.) 面積 (平方米)	1653.157	108.404	1761.561
Communal garden or play area for residents' use on the roof, or on any floor between the roof and the lowest residential floor, of a building in the Development (whether known as a communal sky garden or otherwise) 位於發展項目中的建築物的天台或在天台和最低一層住宅樓層之間的任何一層的、供住客使用的公用花園或遊樂地方 (不論是稱為公用空中花園或其他名稱)	Area (sq.ft.) 面積 (平方呎)	-	-	-
	Area (sq.m.) 面積 (平方米)	-	-	-
Communal garden or play area for residents' use below the lowest residential floor of a building in the Development (whether known as a covered and landscaped play area or otherwise) 位於發展項目中的建築物的最低一層住宅樓層以下的、供住客使用的公用花園或遊樂地方 (不論是稱為有蓋及園景的遊樂場或有其他名稱)	Area (sq.ft.) 面積 (平方呎)	1235	5378	6613
	Area (sq.m.) 面積 (平方米)	114.698	499.671	614.369

**Note:**

Areas in square feet are converted at a rate of 1 square metre to 10.764 square feet and rounded off to the nearest integer, which may be slightly different from the area presented in square metres.

**備註:**

以平方呎顯示的面積以1平方米=10.764平方呎換算，並四捨五入至整數，有可能以平方米表達之面積有些微差異。



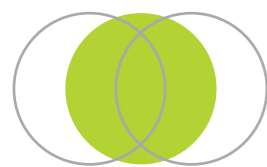
## 22 | INSPECTION OF PLANS AND DEED OF MUTUAL COVENANT

閱覽圖則及公契

1. A copy of the outline zoning plan relating to the Development is available at [www.ozp.tpb.gov.hk](http://www.ozp.tpb.gov.hk).
2. A copy of the latest draft of every deed of mutual covenant in respect of the specified residential properties as at the date on which the specified residential properties are offered to be sold is available for inspection at the place at which the specified residential properties are offered to be sold.
3. The inspection is free of charge.

1. 備有關乎本發展項目的分區計劃大綱圖的文本供閱覽的互聯網網站的網址為[www.ozp.tpb.gov.hk](http://www.ozp.tpb.gov.hk)。
2. 指明住宅物業的每一公契在將指明住宅物業提供出售的日期的最新擬稿的文本存放在指明住宅物業的售樓處，以供閱覽。
3. 無須為閱覽付費。





1. EXTERIOR FINISHES			
Item		Description	
(a)	External Wall	Type of finishes	Podium: Glass, metal, natural stone, tile, external paint, aluminium cladding, fibre cement cladding, aluminium louvre and vertical green wall Residential towers: Curtain wall, tile, external paint, aluminium cladding and aluminium louvre
(b)	Window	Material of frame	Fluorocarbon coating aluminium frame
		Material of glass	Insulated Glazing Unit (IGU) with low-e coating glass for window in Living and Dining Room, Family Room and Bedroom (applicable to flats below only) Tower 1: Flats A, B, C and D on 1/F to 3/F, 5/F to 12/F, 15/F to 23/F, 25/F to 32/F Tower 1: Flats A and B on 33/F and 35/F Tower 1A: Flats A on 1/F to 3/F, 5/F to 12/F, 15/F to 23/F, 25/F to 32/F Tower 1A: Flats B on 3/F, 5/F to 12/F, 15/F to 23/F, 25/F to 32/F Tower 1A: Flats A on 33/F and 35/F Tower 2: Flats A, B, C and D on 1/F to 3/F, 5/F to 12/F, 15/F to 23/F, 25/F to 32/F Tower 2: Flats A and B on 33/F and 35/F Tower 2A: Flats A on 1/F to 3/F, 5/F to 12/F, 15/F to 23/F, 25/F to 32/F Tower 2A: Flats A on 33/F and 35/F
			Tinted glass for window in Living and Dining Room and Bedroom (applicable to flats below only) Tower 1: Flats E, F and G on 1/F to 3/F, 5/F to 12/F, 15/F to 23/F, 25/F to 33/F Tower 1: Flats A and B on 35/F Tower 1A: Flats C, D, E, F and G on 1/F to 3/F, 5/F to 12/F, 15/F to 23/F, 25/F to 33/F Tower 1A: Flat A on 35/F Tower 2: Flats E, F, G and H on 1/F to 3/F, 5/F to 12/F, 15/F to 23/F, 25/F to 33/F Tower 2: Flats A and B on 35/F Tower 2A: Flats B, C, D and E on 1/F to 3/F, 5/F to 12/F, 15/F to 23/F, 25/F to 33/F Tower 2A: Flats A on 33/F and 35/F
			Tinted glass for windows of all Store Room and Utility Room
			Frosted glass for windows of all Bathroom, Toilet and Powder Room
Tinted glass for windows in lift lobby (applicable to flats below only) Tower 1: Flats A and B on 35/F Tower 1A: Flat A on 35/F Tower 2: Flats A and B on 35/F Tower 2A: Flat A on 35/F			

1. 外部裝修物料			
細項		描述	
(a)	外牆	裝修物料的類型	基座: 玻璃、金屬、天然石材、瓷磚、外牆漆、鋁質飾面、纖維水泥飾面、鋁質百葉及垂直綠化牆 住宅大樓: 幕牆、瓷磚、外牆漆、鋁質飾面及鋁質百葉
(b)	窗	框的用料	氟碳噴塗鋁框
		玻璃的用料	客廳及飯廳、家庭廳及睡房的窗採用低反射鍍膜雙層中空玻璃 (只適用於下列單位) 第1座: 1樓至3樓、5樓至12樓、15樓至23樓、25樓至32樓之A、B、C及D單位 第1座: 33樓及35樓之A及B單位 第1A座: 1樓至3樓、5樓至12樓、15樓至23樓、25樓至32樓之A單位 第1A座: 3樓、5樓至12樓、15樓至23樓、25樓至32樓之B單位 第1A座: 33樓及35樓之A單位 第2座: 1樓至3樓、5樓至12樓、15樓至23樓、25樓至32樓之A、B、C及D單位 第2座: 33樓及35樓之A及B單位 第2A座: 1樓至3樓、5樓至12樓、15樓至23樓、25樓至32樓之A單位 第2A座: 33樓及35樓之A單位
			客廳及飯廳及睡房的窗採用有色玻璃 (只適用於下列單位) 第1座: 1樓至3樓、5樓至12樓、15樓至23樓、25樓至33樓之E、F及G單位 第1座: 35樓之A及B單位 第1A座: 1樓至3樓、5樓至12樓、15樓至23樓、25樓至33樓之C、D、E、F及G單位 第1A座: 35樓之A單位 第2座: 1樓至3樓、5樓至12樓、15樓至23樓、25樓至33樓之E、F、G及H單位 第2座: 35樓之A及B單位 第2A座: 1樓至3樓、5樓至12樓、15樓至23樓、25樓至33樓之B、C、D及E單位 第2A座: 33樓及35樓之A單位
			全部儲物室及多用途房的窗採用有色玻璃
全部浴室、洗手間及化妝間的窗均採用磨砂玻璃			
		升降機大堂的窗採用有色玻璃 (只適用於下列單位) 第1座: 35樓之A及B單位 第1A座: 35樓之A單位 第2座: 35樓之A及B單位 第2A座: 35樓之A單位	