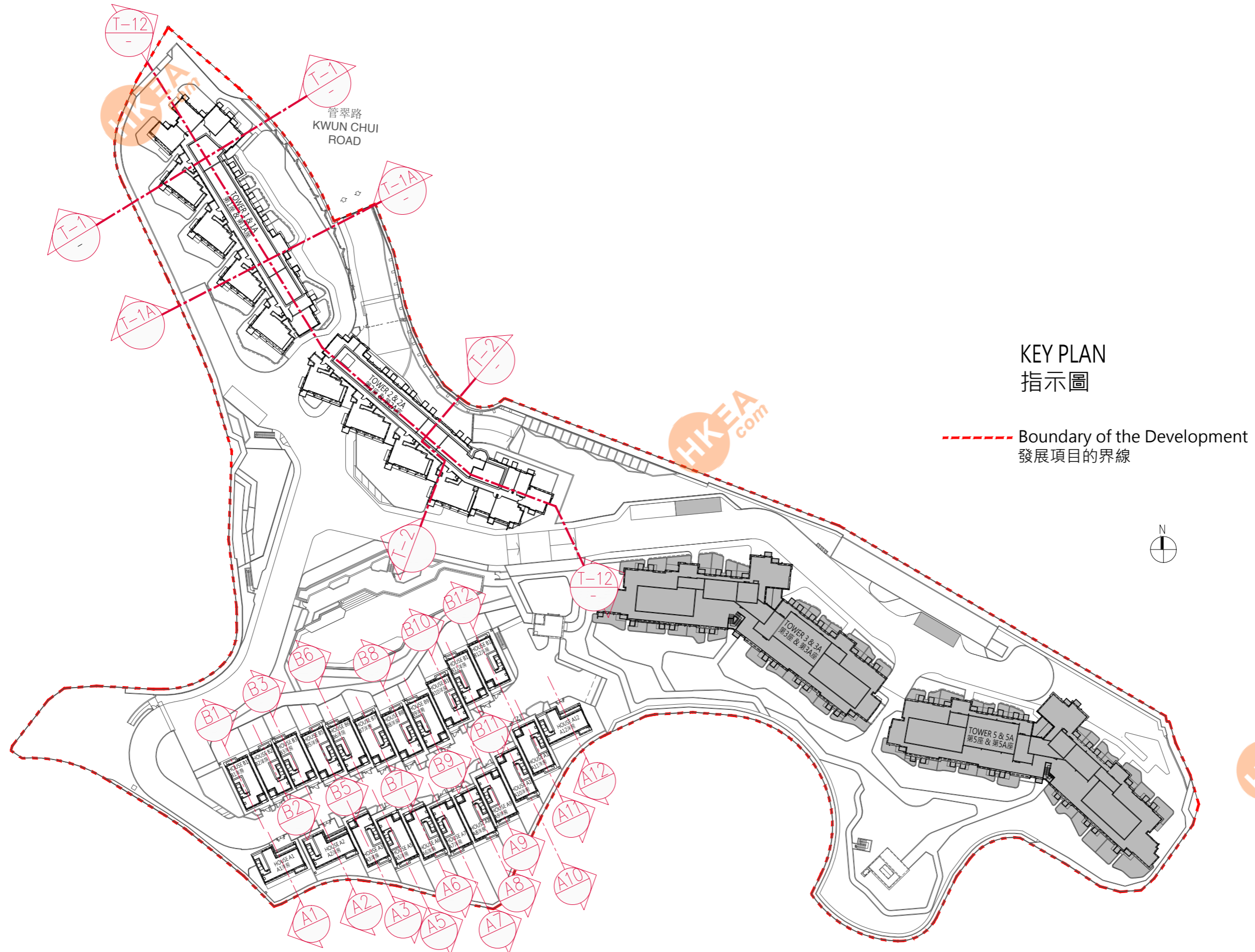




18 期數中的建築物的橫截面圖

CROSS-SECTION PLAN OF BUILDING IN THE PHASE



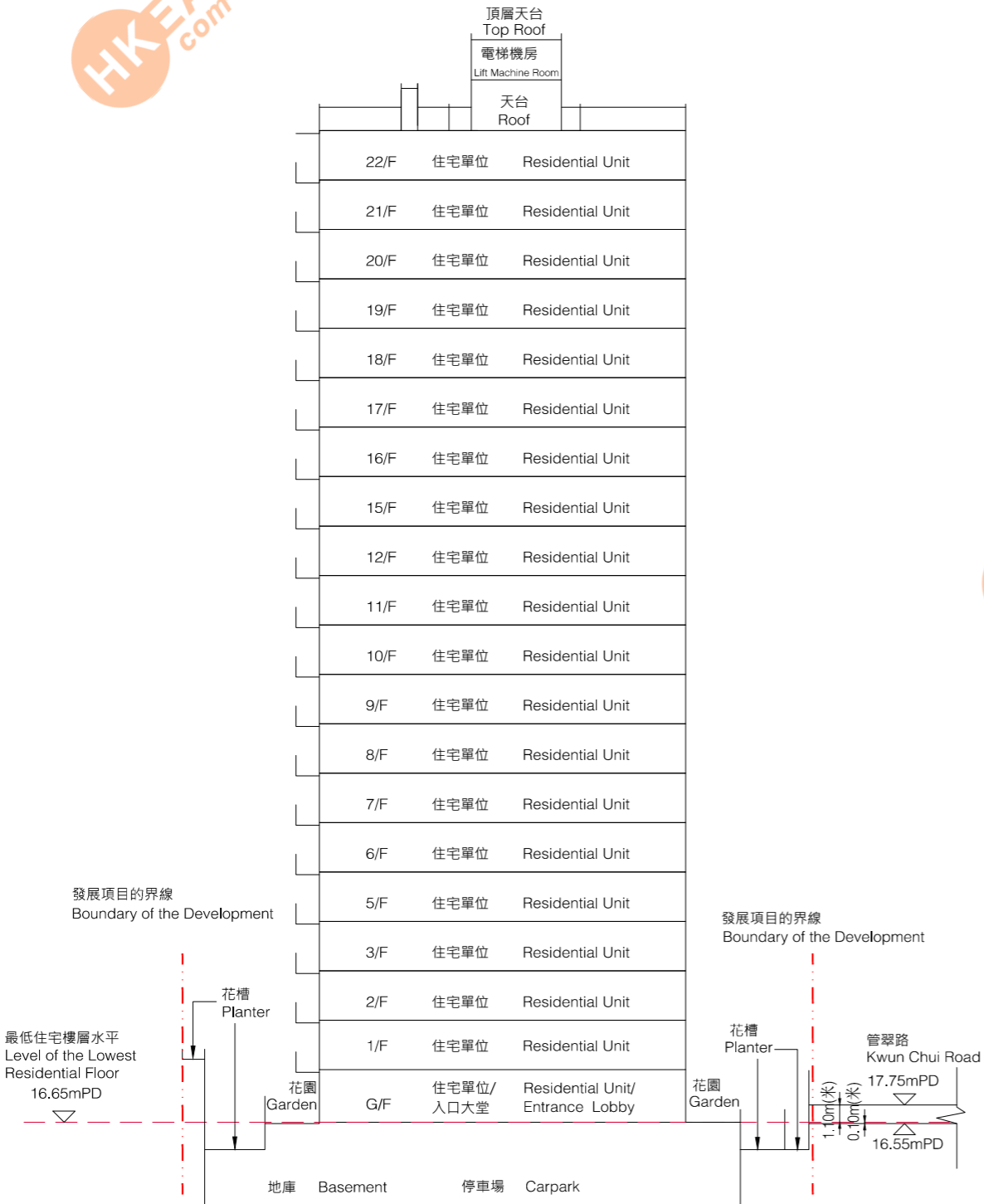


# 18 期數中的建築物的橫截面圖

## CROSS-SECTION PLAN OF BUILDING IN THE PHASE

橫截面圖 1-1  
Corss-section plan 1-1

### 第1座 TOWER 1



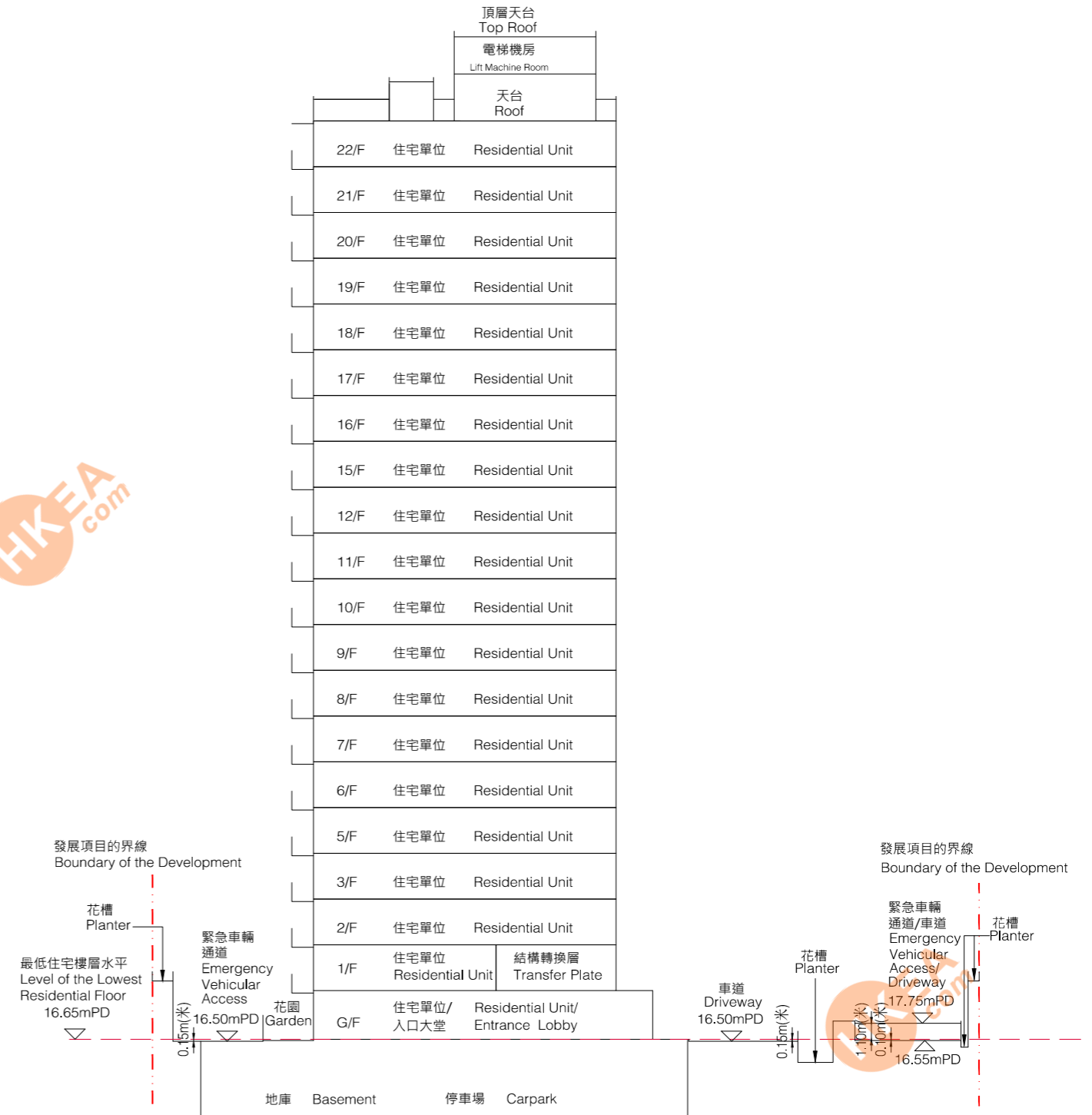
毗鄰建築物的一段管翠路, 為香港主水平基準以上16.55至17.75米。  
The part of Kwun Chui Road adjacent to the building is 16.55 to 17.75 metres above Hong Kong Principal Datum.

▽ 代表香港主水平基準以上高度(米)。  
Height in metre above Hong Kong Principal Datum (mPD).

--- 紅色虛線為該建築物最低住宅樓層水平。  
Red dotted line denotes the lowest residential floor.

橫截面圖 1A-1A  
Corss-section plan 1A-1A

### 第1A座 TOWER 1A



毗鄰建築物的一段緊急車輛通道/車道, 為香港主水平基準以上16.50米。  
The part of Emergency Vehicular Access/ Driveway adjacent to the building is 16.50 metres above Hong Kong Principal Datum.

毗鄰建築物的一段緊急車輛通道/車道, 為香港主水平基準以上16.55至17.75米。  
The part of Emergency Vehicular Access/ Driveway adjacent to the building is 16.55 to 17.75 metres above Hong Kong Principal Datum.

▽ 代表香港主水平基準以上高度(米)。  
Height in metre above Hong Kong Principal Datum (mPD).

--- 紅色虛線為該建築物最低住宅樓層水平。  
Red dotted line denotes the lowest residential floor.



橫截面圖 2-2  
Corss-section plan 2-2

### 第2座與第2A座 TOWER 2 & 2A



毗鄰建築物的一段緊急車輛通道/車道, 為香港主水平基準以上16.30米。  
The part of Emergency Vehicular Access/ Driveway adjacent to the building is 16.30 metres above Hong Kong Principal Datum.

毗鄰建築物的一段車道, 為香港主水平基準以上16.00米。  
The part of Driveway adjacent to the building is 16.30 metres above Hong Kong Principal Datum.

▽ 代表香港主水平基準以上高度(米)。  
Height in metre above Hong Kong Principal Datum (mPD).  
- - - 紅色虛線為該建築物最低住宅樓層水平。  
Red dotted line denotes the lowest residential floor.



# 18 期數中的建築物的橫截面圖

## CROSS-SECTION PLAN OF BUILDING IN THE PHASE

橫截面圖 12-12  
Corss-section plan 12-12

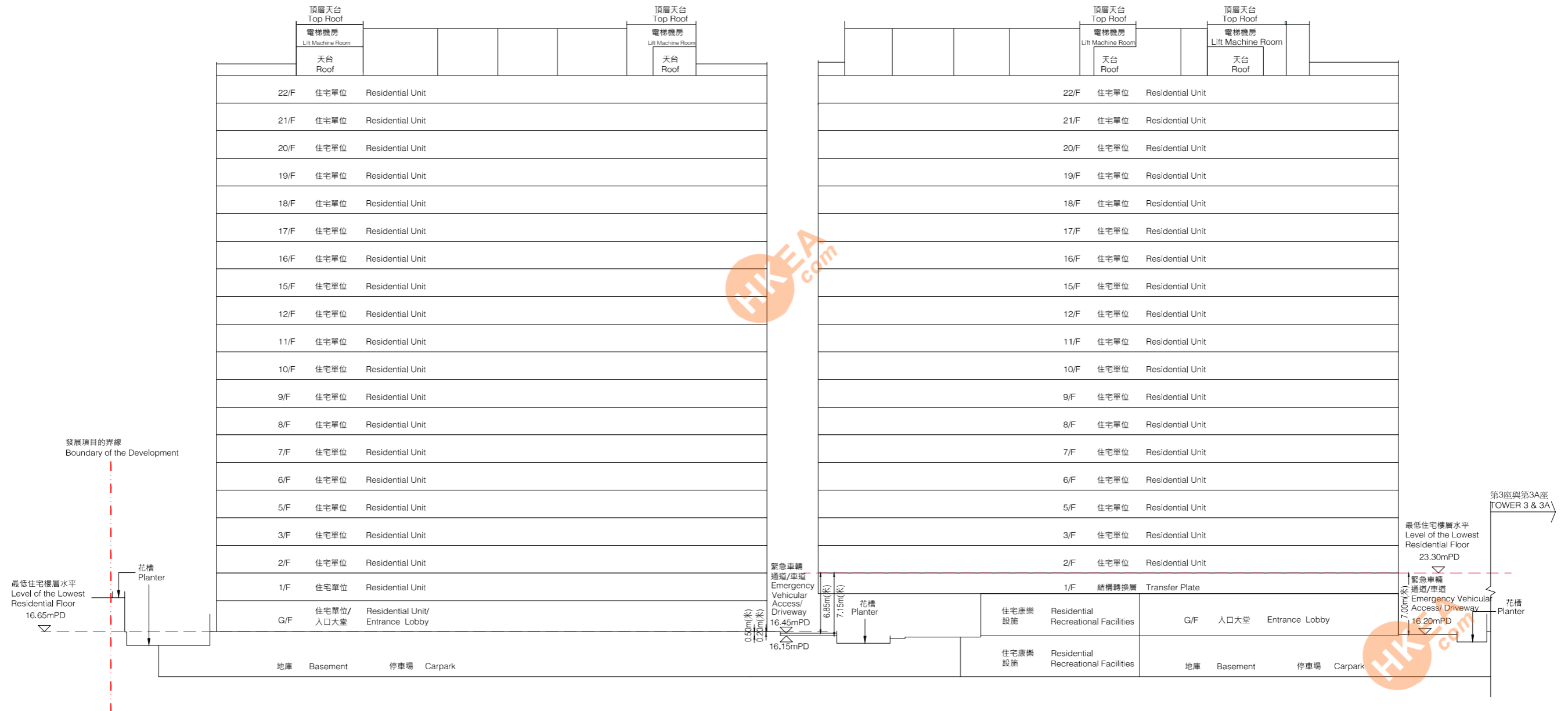


### 第1座 TOWER 1

### 第1A座 TOWER 1A

### 第2座 TOWER 2

### 第2A座 TOWER 2A



毗鄰建築物的一段緊急車輛通道/車道, 為香港主水平基準以上16.15至16.45米。  
The part of Emergency Vehicular Access/ Driveway adjacent to the building is 16.15 to 16.45 metres above Hong Kong Principal Datum.

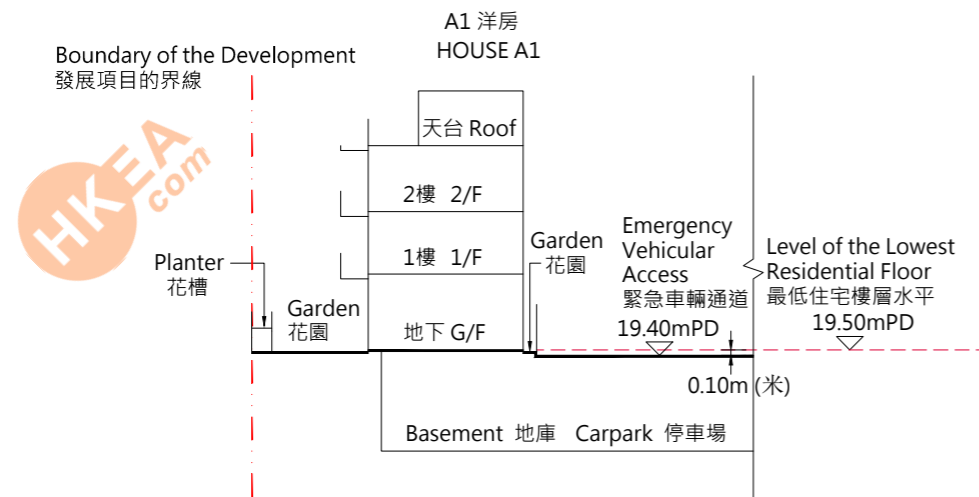
毗鄰建築物的一段緊急車輛通道/車道, 為香港主水平基準以上16.20米。  
The part of Emergency Vehicular Access/ Driveway adjacent to the building is 16.20 metres above Hong Kong Principal Datum.

- ▽ 代表香港主水平基準以上高度(米)。  
Height in metre above Hong Kong Principal Datum (mPD).
- 紅色虛線為該建築物最低住宅樓層水平。

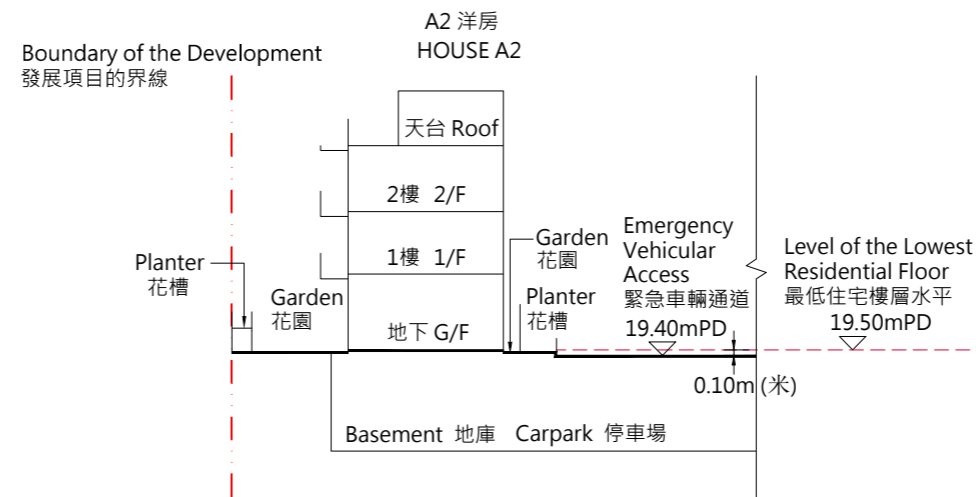


# 18 期數中的建築物的橫截面圖

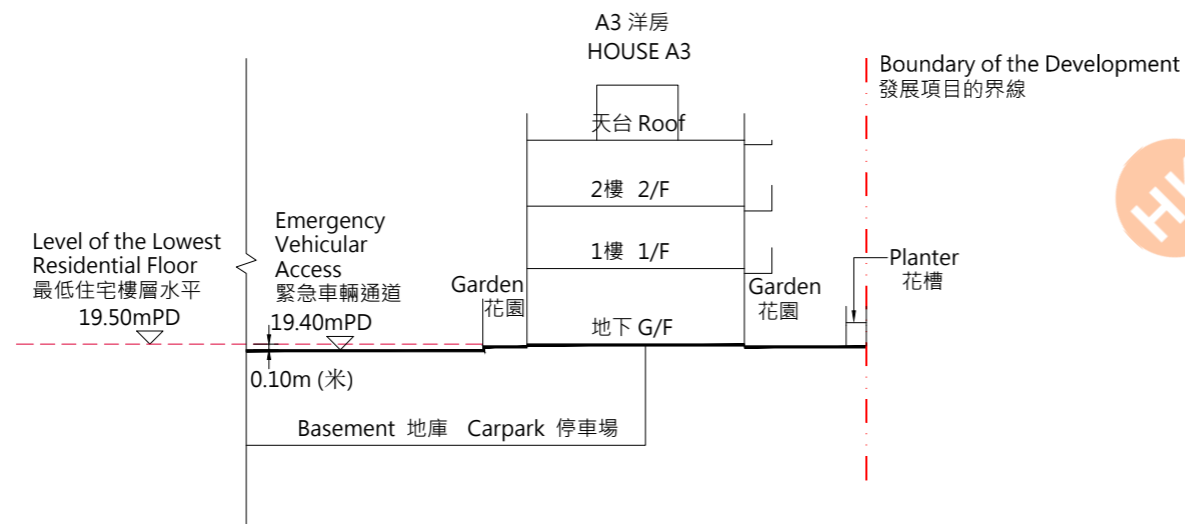
## CROSS-SECTION PLAN OF BUILDING IN THE PHASE



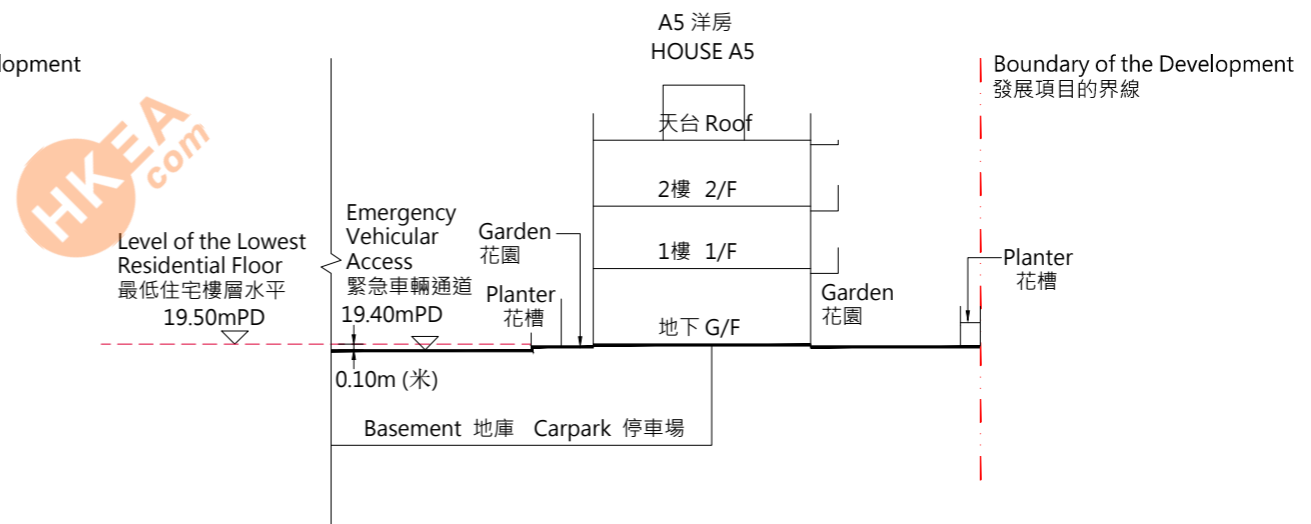
Cross-section Plan A1  
橫截面圖 A1



Cross-section Plan A2  
橫截面圖 A2



Cross-section Plan A3  
橫截面圖 A3



Cross-section Plan A5  
橫截面圖 A5

毗鄰建築物的一段緊急車輛通道/ 車道, 為香港主水平基準19.40米以上的水平。  
The part of Emergency Vehicular Access/ Driveway to the building is 19.40 metres above Hong Kong Principal Datum.

▽ 代表香港主水平基準以上高度(米)。  
Height in metre above Hong Kong Principal Datum (mPD).

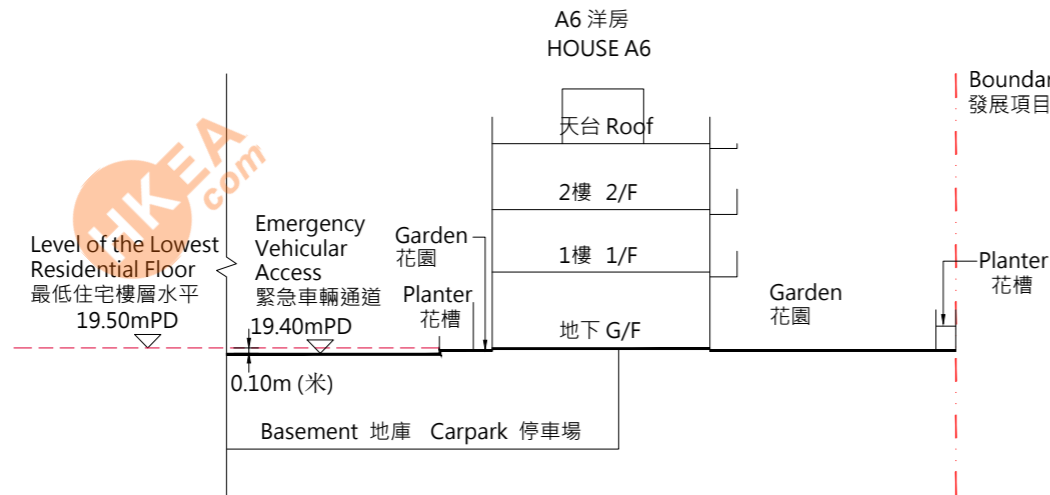
--- 紅色虛線為該建築物最低住宅樓層水平。  
Red dotted line denotes the lowest residential floor.



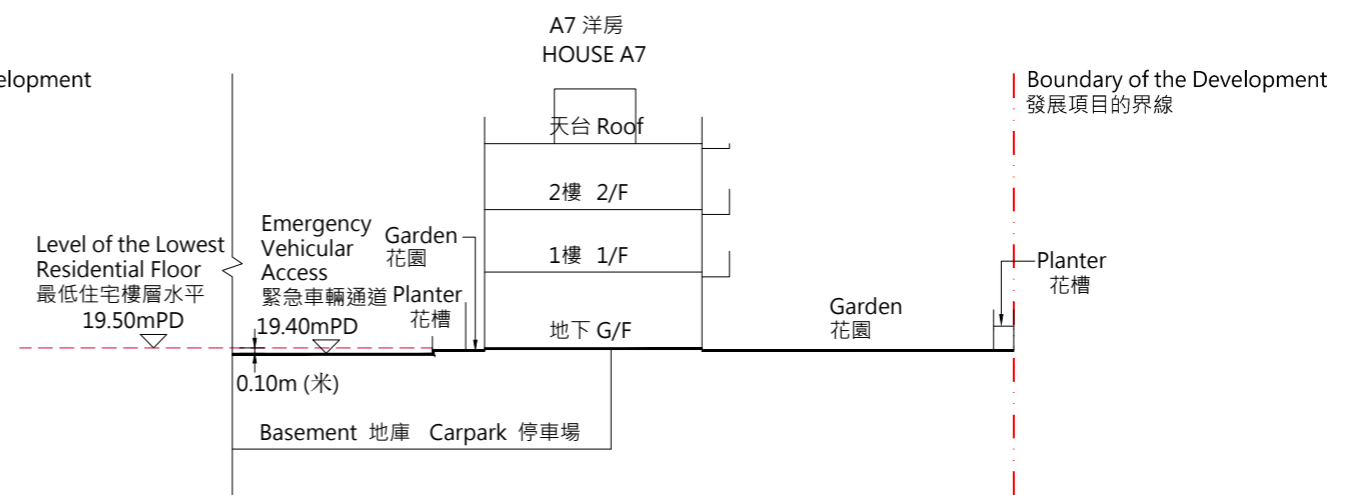


# 18 期數中的建築物的橫截面圖

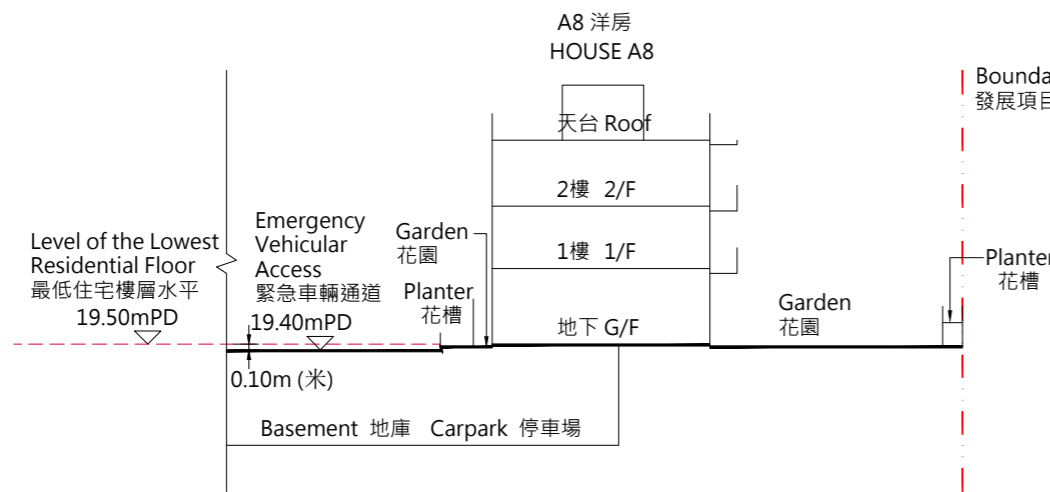
## CROSS-SECTION PLAN OF BUILDING IN THE PHASE



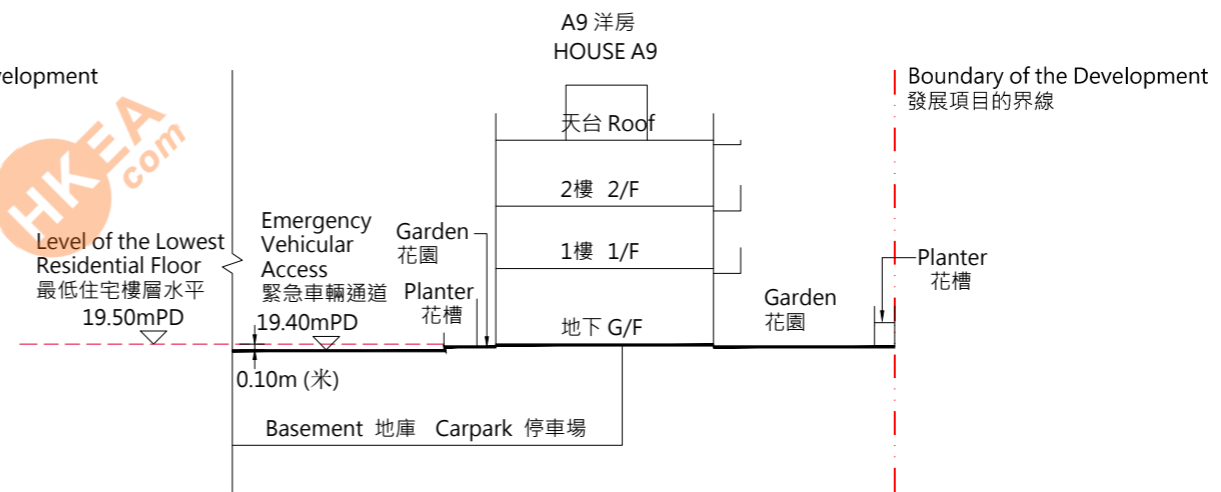
Cross-section Plan A6  
橫截面圖 A6



Cross-section Plan A7  
橫截面圖 A7



Cross-section Plan A8  
橫截面圖 A8



Cross-section Plan A9  
橫截面圖 A9

毗鄰建築物的一段緊急車輛通道/車道，為香港主水平基準19.40米以上的水平。  
The part of Emergency Vehicular Access/ Driveway to the building is 19.40 metres above Hong Kong Principal Datum.

▽ 代表香港主水平基準以上高度(米)。  
Height in metre above Hong Kong Principal Datum (mPD).

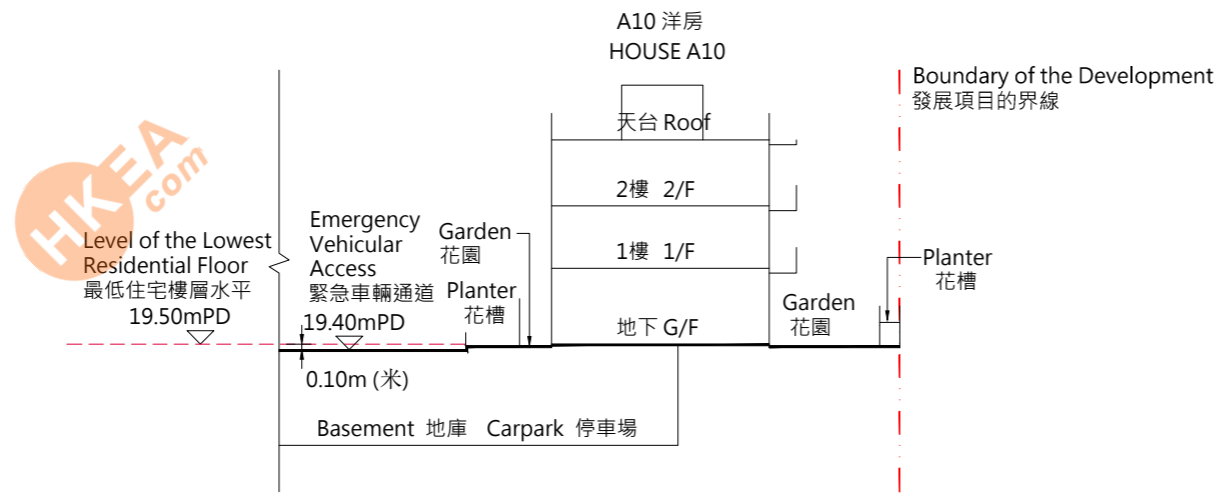
--- 紅色虛線為該建築物最低住宅樓層水平。  
Red dotted line denotes the lowest residential floor.



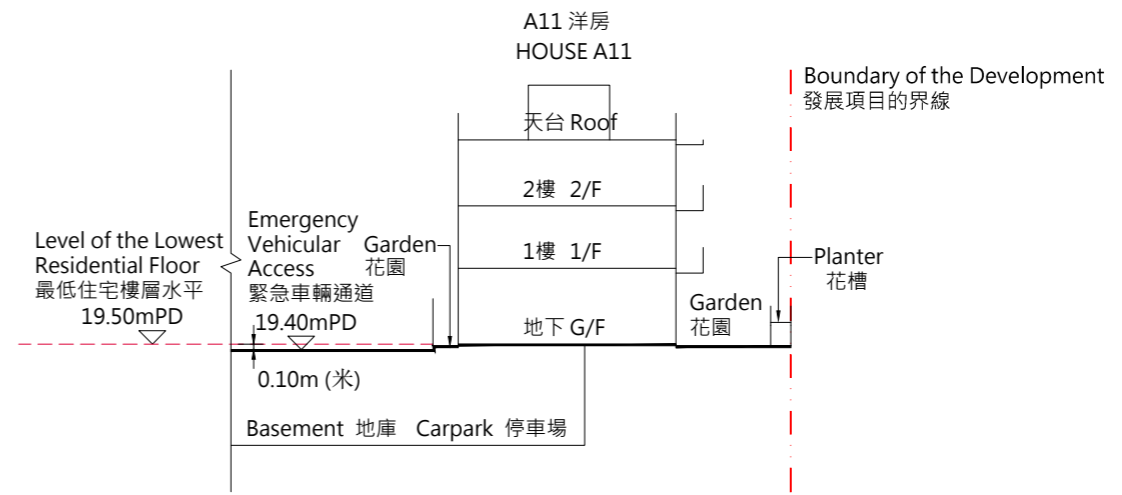


# 18 期數中的建築物的橫截面圖

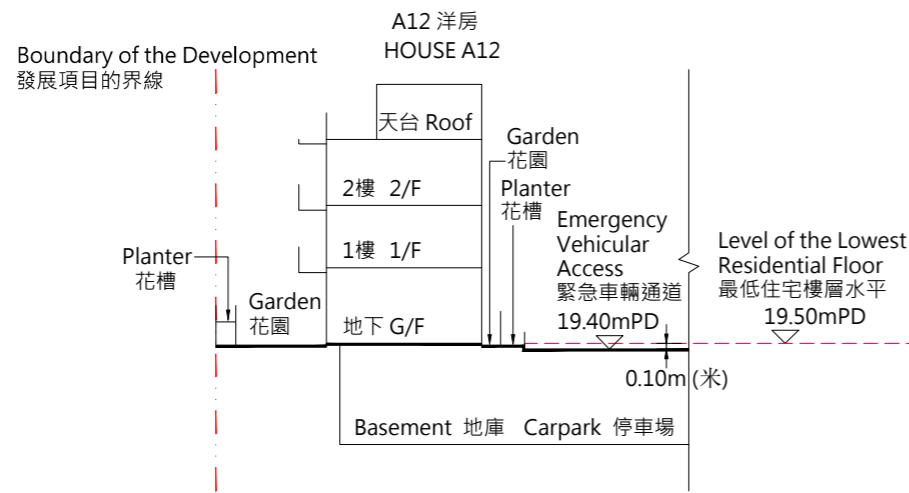
## CROSS-SECTION PLAN OF BUILDING IN THE PHASE



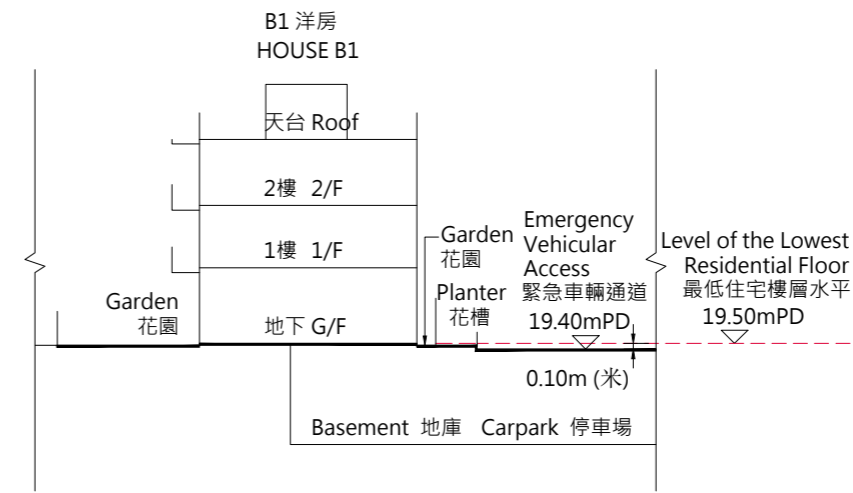
Cross-section Plan A10  
橫截面圖 A10



Cross-section Plan A11  
橫截面圖 A11



Cross-section Plan A12  
橫截面圖 A12

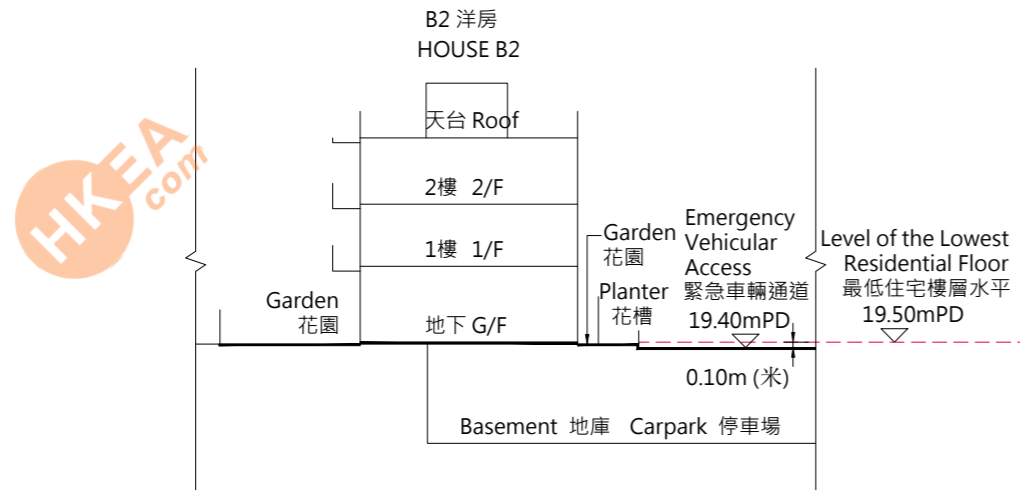


Cross-section Plan B1  
橫截面圖 B1

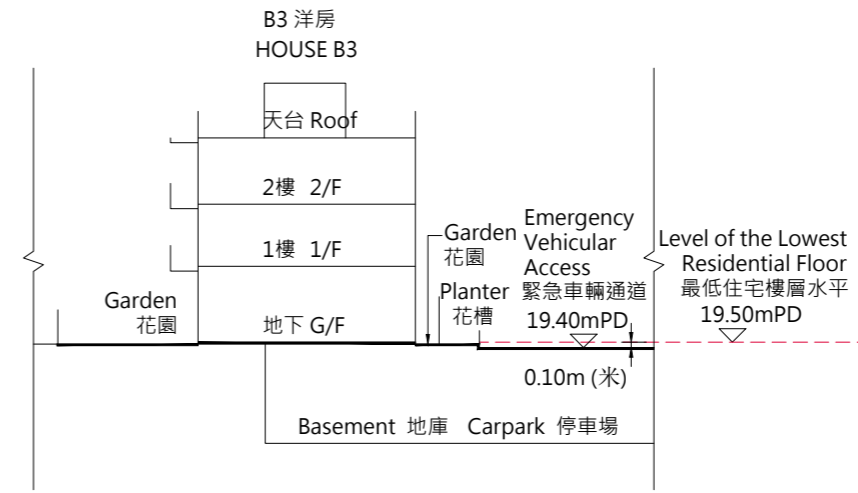
毗鄰建築物的一段緊急車輛通道/車道, 為香港主水平基準19.40米以上的水平。  
The part of Emergency Vehicular Access/ Driveway to the building is 19.40 metres above Hong Kong Principal Datum.

- ▽ 代表香港主水平基準以上高度(米)。  
Height in metre above Hong Kong Principal Datum (mPD).
- 紅色虛線為該建築物最低住宅樓層水平。  
Red dotted line denotes the lowest residential floor.

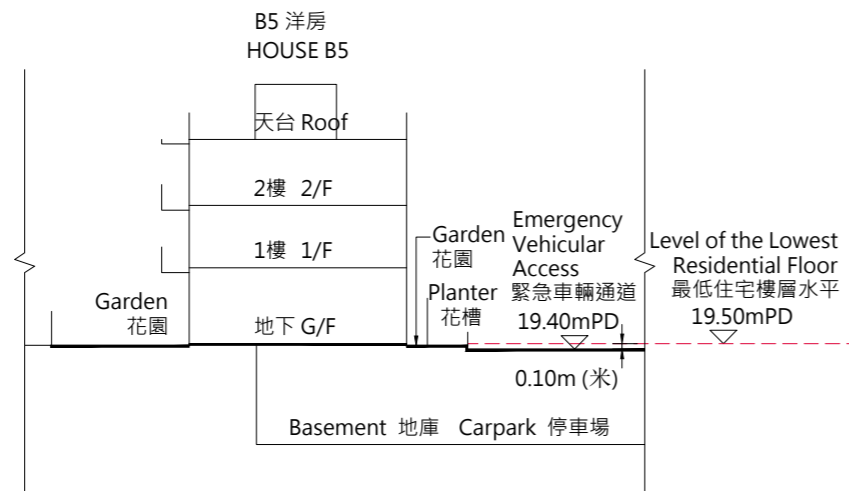




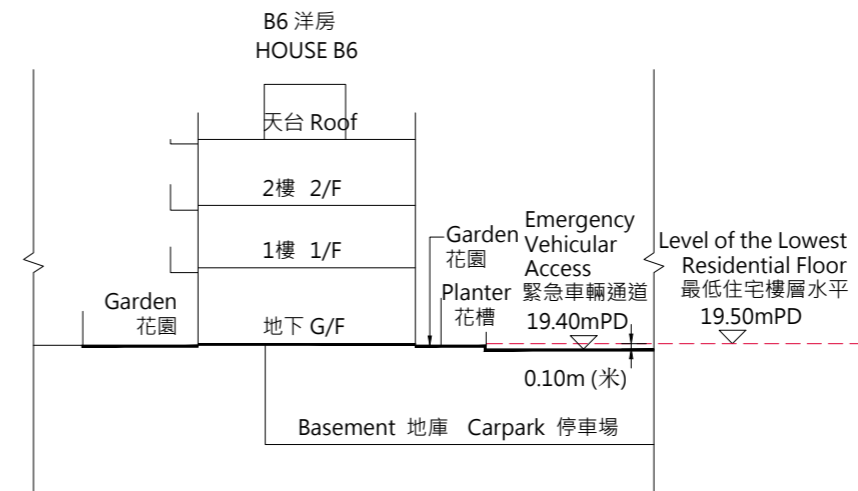
Cross-section Plan B2  
橫截面圖 B2



Cross-section Plan B3  
橫截面圖 B3



Cross-section Plan B5  
橫截面圖 B5



Cross-section Plan B6  
橫截面圖 B6

毗鄰建築物的一段緊急車輛通道/車道, 為香港主水平基準19.40米以上的水平。  
The part of Emergency Vehicular Access/ Driveway to the building is 19.40 metres above Hong Kong Principal Datum.

▽ 代表香港主水平基準以上高度(米)。  
Height in metre above Hong Kong Principal Datum (mPD).

--- 紅色虛線為該建築物最低住宅樓層水平。  
Red dotted line denotes the lowest residential floor.

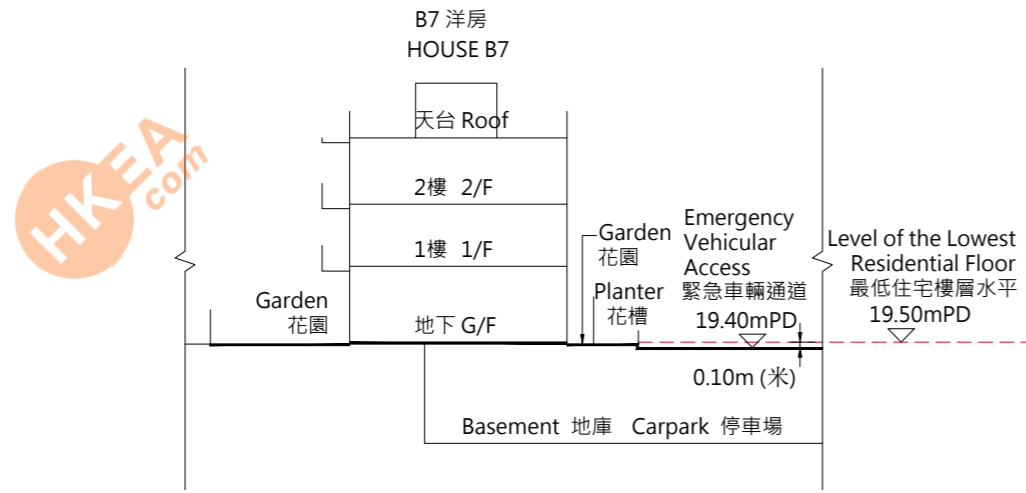




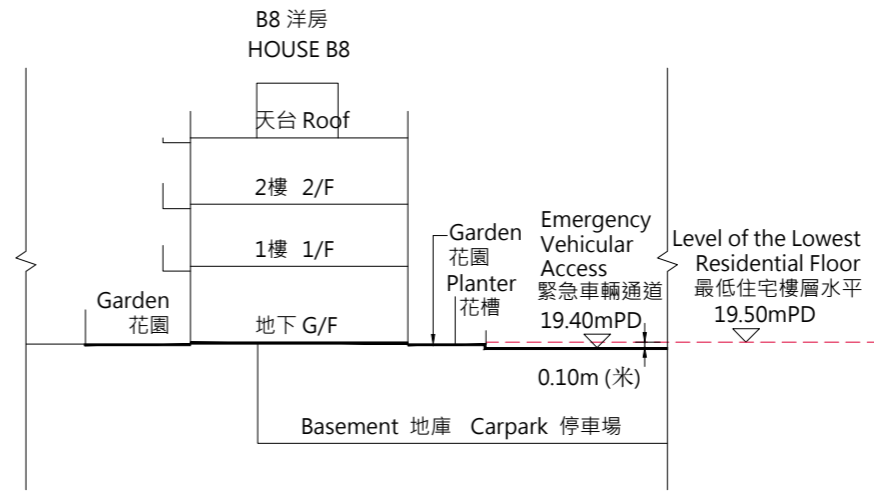


# 18 期數中的建築物的橫截面圖

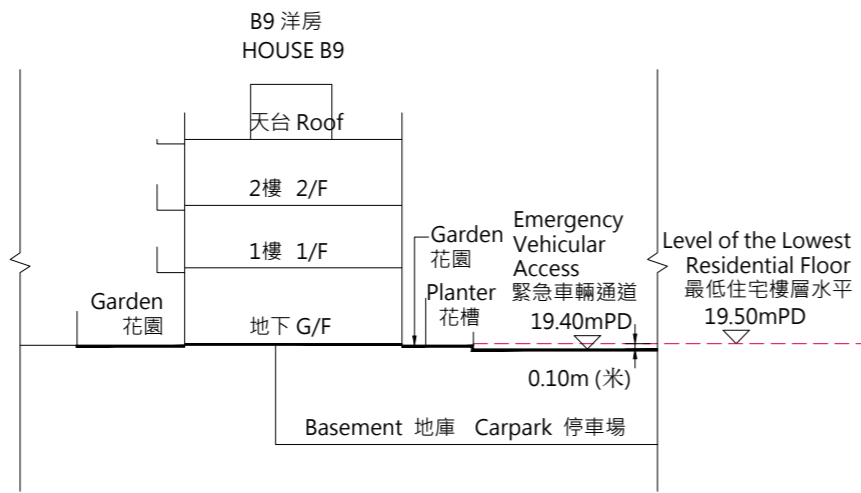
## CROSS-SECTION PLAN OF BUILDING IN THE PHASE



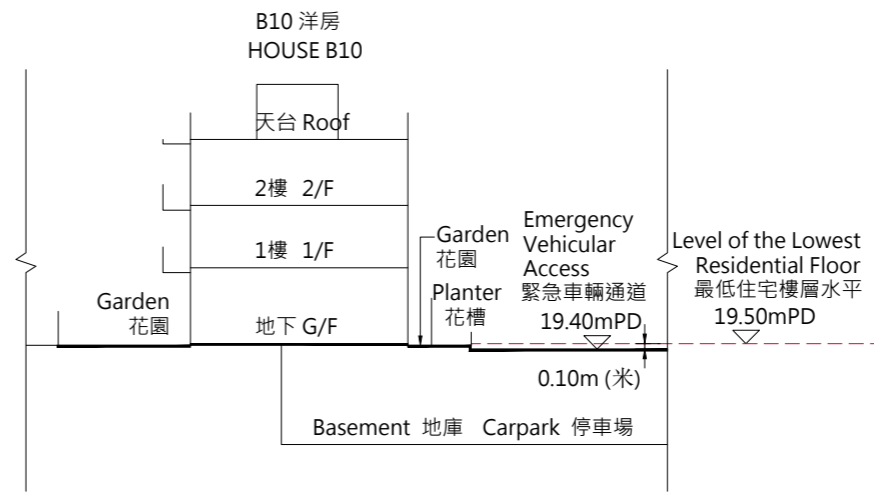
Cross-section Plan B7  
橫截面圖 B7



Cross-section Plan B8  
橫截面圖 B8



Cross-section Plan B9  
橫截面圖 B9



Cross-section Plan B10  
橫截面圖 B10

毗鄰建築物的一段緊急車輛通道/車道, 為香港主水平基準19.40米以上的水平。  
The part of Emergency Vehicular Access/ Driveway to the building is 19.40 metres above Hong Kong Principal Datum.

▽ 代表香港主水平基準以上高度(米)。  
Height in metre above Hong Kong Principal Datum (mPD).

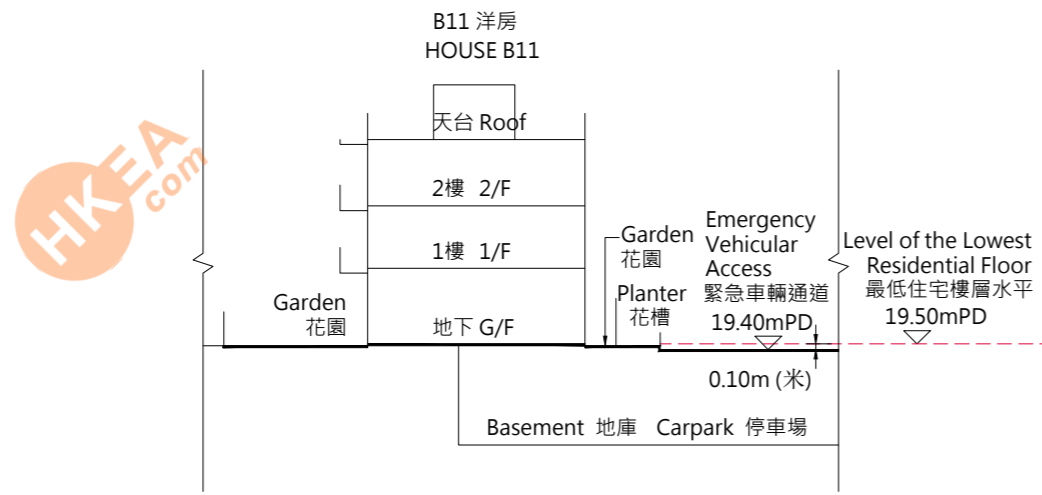
--- 紅色虛線為該建築物最低住宅樓層水平。  
Red dotted line denotes the lowest residential floor.



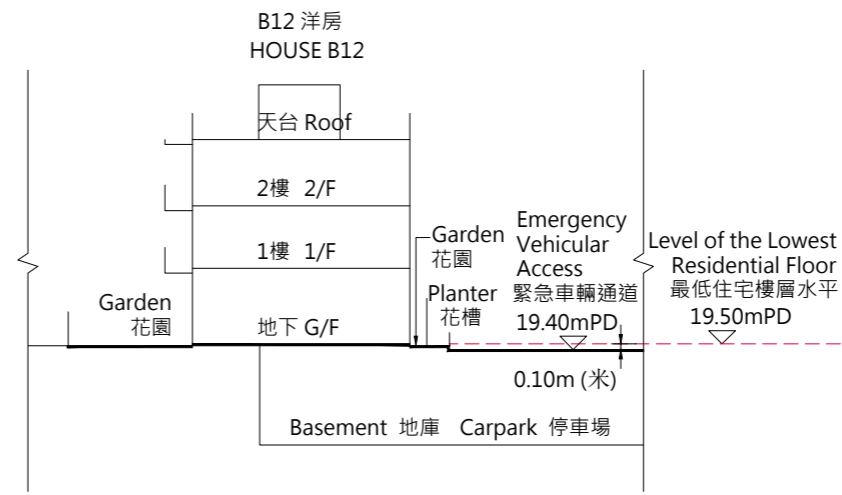


# 18 期數中的建築物的橫截面圖

## CROSS-SECTION PLAN OF BUILDING IN THE PHASE



Cross-section Plan B11  
橫截面圖 B11



Cross-section Plan B12  
橫截面圖 B12

毗鄰建築物的一段緊急車輛通道/車道, 為香港主水平基準19.40米以上的水平。  
The part of Emergency Vehicular Access/ Driveway to the building is 19.40 metres above Hong Kong Principal Datum.

▽ 代表香港主水平基準以上高度(米)。  
Height in metre above Hong Kong Principal Datum (mPD).

----- 紅色虛線為該建築物最低住宅樓層水平。  
Red dotted line denotes the lowest residential floor.

