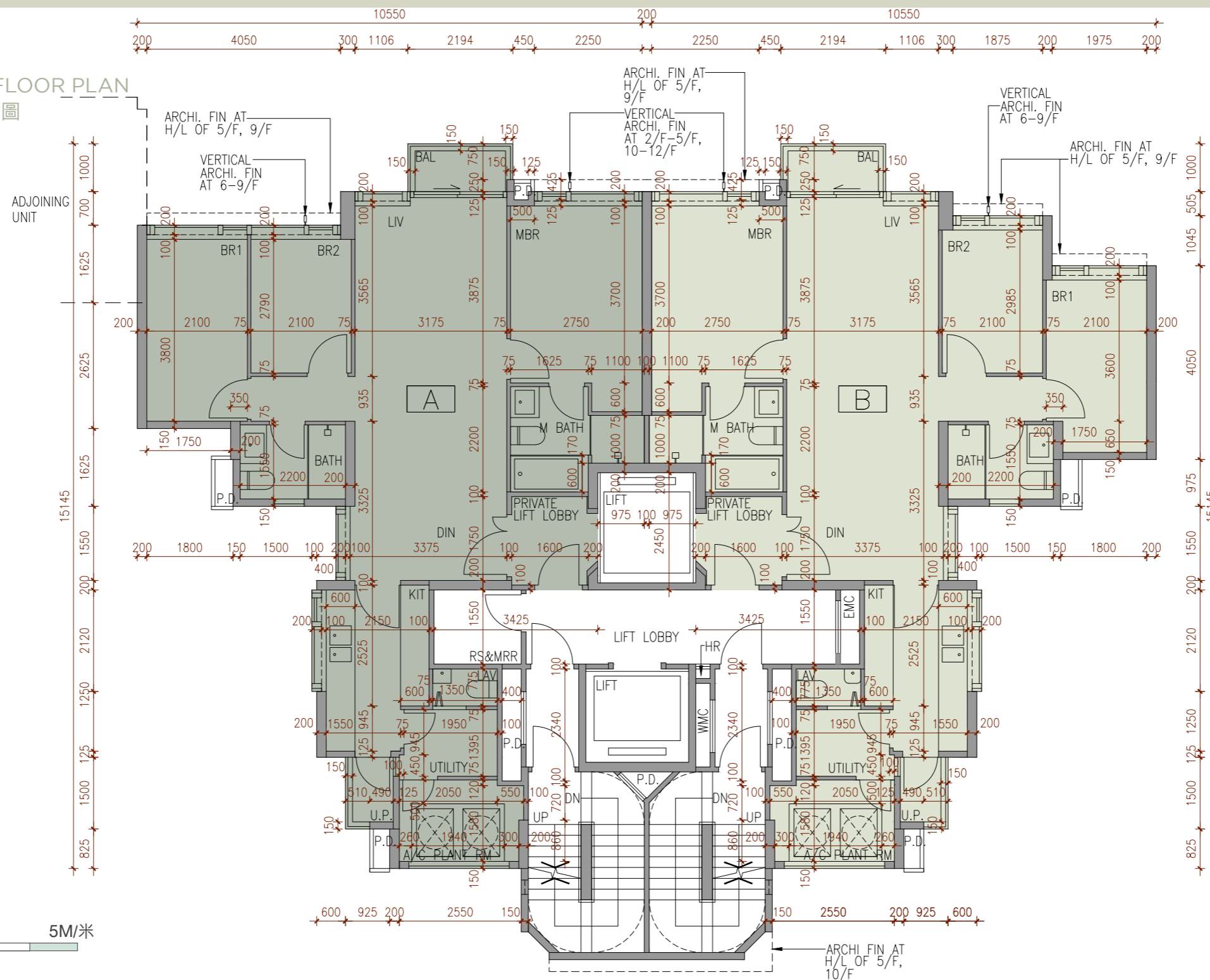


# FLOOR PLANS OF RESIDENTIAL PROPERTIES IN THE DEVELOPMENT 發展項目的住宅物業的樓面平面圖

TOWER 3 第3座

2/F - 3/F & 5/F - 12/F FLOOR PLAN

2樓至3樓及5樓至12樓平面圖



Scale: 0M/米  
比例:

	Floor 樓層	Units 單位	
		A	B
The thickness of the floor slabs (excluding plaster) of each residential property (mm) 每個住宅物業的樓板(不包括灰泥)的厚度(毫米)	2/F - 3/F & 5/F - 12/F 2樓至3樓及5樓至12樓	150	150
The floor-to-floor height of each residential property (mm) 每個住宅物業的層與層之間的高度(毫米)	2/F - 3/F & 5/F - 11/F 2樓至3樓及5樓至11樓	3500	3500
	12/F 12樓	3350, 3500, 3575, 3650, 3750, 4000	3350, 3500, 3575, 3650, 3750, 4000

The internal areas of the residential properties on the upper floors will generally be slightly larger than those on the lower floors because of the reducing thickness of the structural walls on the upper floors. (Remark: The aforesaid statement is not applicable to this Development.)

因住宅物業的較高樓層的結構牆的厚度遞減，較高樓層的內部面積，一般比較低樓層的內部面積稍大。(備註: 上述陳述並不適用於本發展項目。)