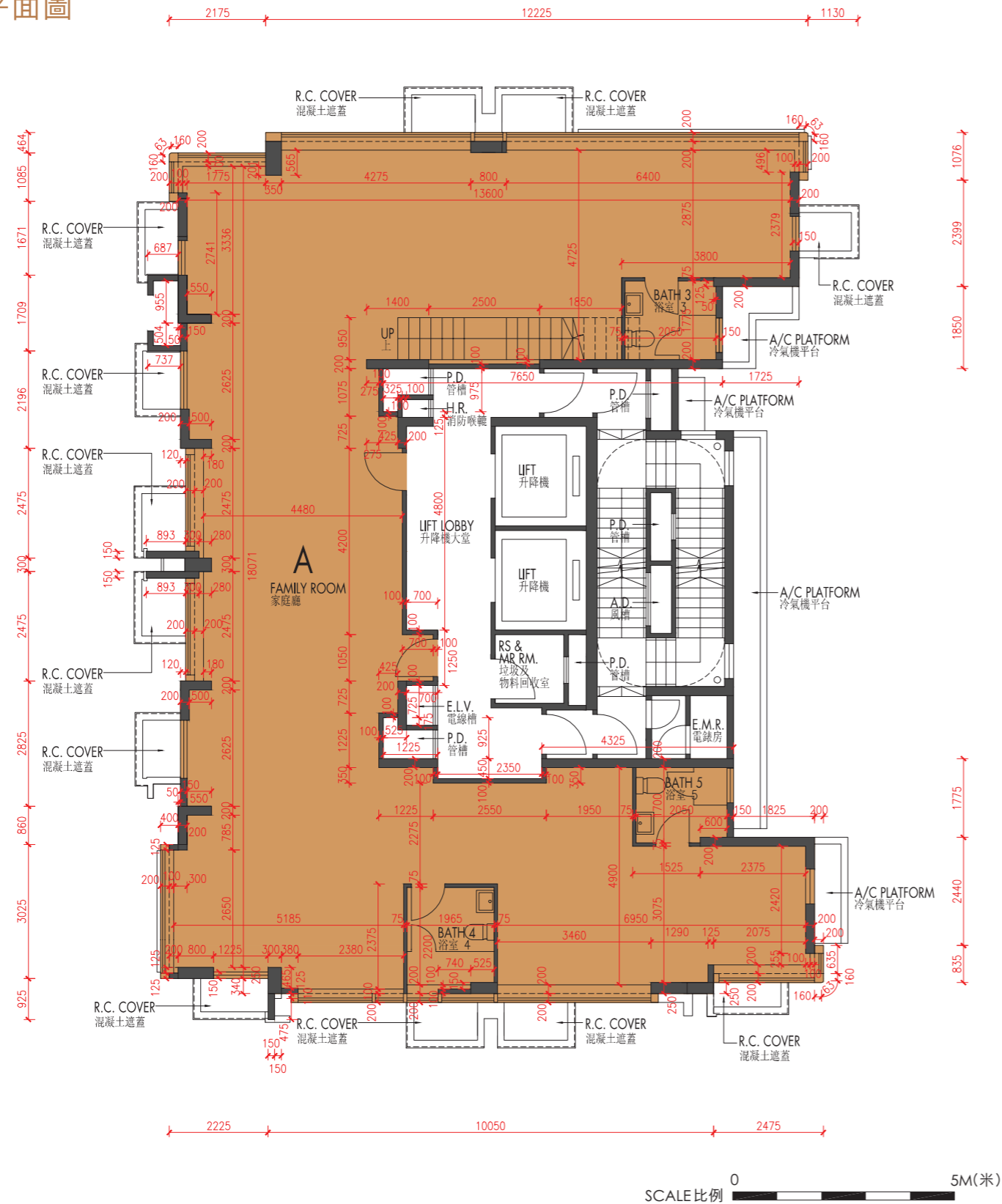


FLOOR PLANS OF RESIDENTIAL PROPERTIES IN THE DEVELOPMENT

發展項目的住宅物業的樓面平面圖

18/F Floor Plan
18樓平面圖



	Floor 樓層	Flat 單位
		A
The thickness of the floor slabs (excluding plaster) of each residential property (mm) 每個住宅物業樓板 (不包括灰泥) 的厚度 (毫米)	18/F 18樓	150, 170 175, 250
The floor-to-floor height (refers to the height between the top surface of the structural slab of a floor and the top surface of the structural slab of its immediate upper floor) of each residential property as provided in the approved building plans for the Development (mm) 按發展項目的經批准的建築圖則所規定者，每個住宅物業的層與層之間的高度 (指該樓層之石屎地台面與上一層石屎地台面之高度距離) (毫米)		3,150, 3,200, 3,500

The internal areas of residential properties on the upper floors will generally be slightly larger than those on the lower floors because of reducing thickness of the structural walls on the upper floors.
因住宅物業的較高樓層的結構牆的厚度遞減，較高樓層的內部面積，一般比較低樓層的內部面積稍大。

There may be sunken slabs at some parts of the ceiling inside some residential units for the installation of mechanical and electrical services of the floor above or due to the structural, architectural and / or decoration design requirements of the floor above.
部分住宅單位內之部分天花或有跌級樓板用以安裝上層之機電設備或配合上層之結構、建築設計及 / 或裝修設計上的需要。

- Notes : 1. The dimensions of floor plans are all in millimetre.
2. Please refer to page 21 of the sales brochure for legend on the terms and abbreviations shown in the floor plan above and the explanatory notes that are applicable thereto.
- 備註： 1. 樓面平面圖之尺規所列數字為毫米標示。
2. 以上平面圖中顯示之名詞及簡稱及其適用的附註，請參閱本售樓說明書第21頁。