

Floor Plans of Residential Properties in the Development

發展項目的住宅物業的樓面平面圖

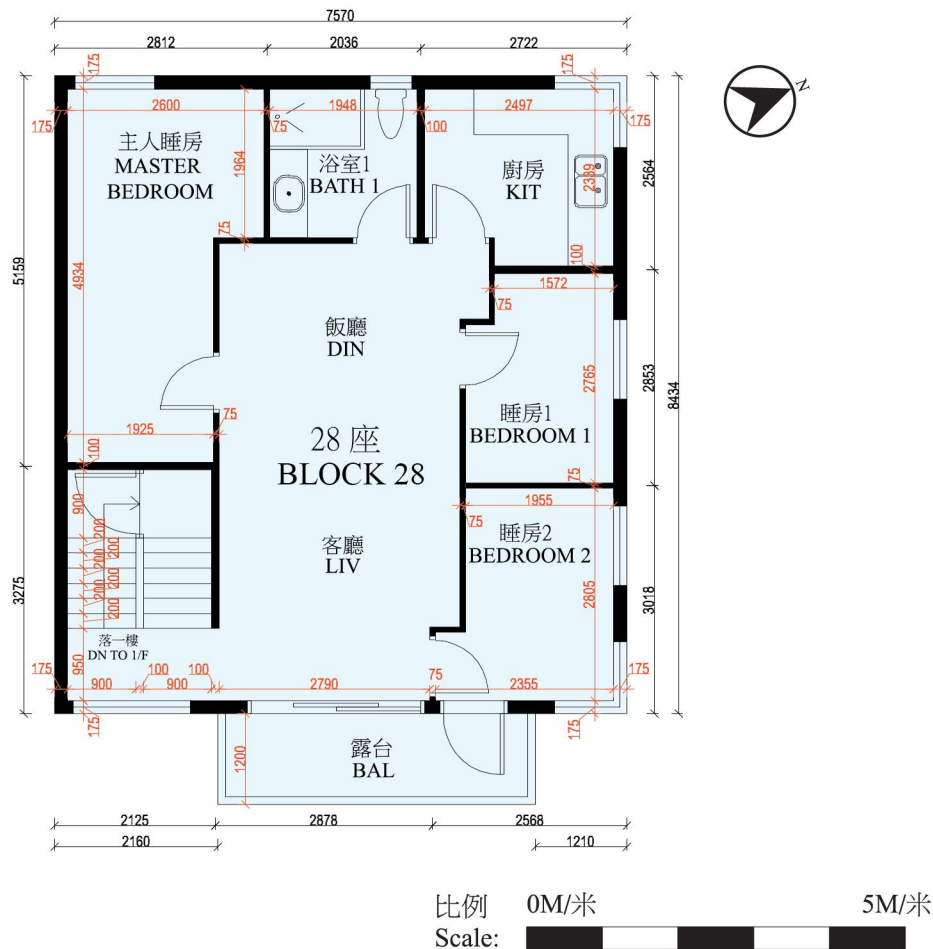
Block 28 Second Floor Plan

28 座二樓平面圖

Sold before commencement of Residential Properties (First-hand Sales) Ordinance, Cap.621

and are not owned by the Vendor. The plan shows the status of the property when it was sold.

(第 621 章《住宅物業（第一手銷售）條例》生效日期前已售及不屬賣方擁有。圖示該物業在出售時的狀況。)



備註：平面圖之尺規所列數字以毫米標示之建築結構尺寸。
 Note: The dimensions of floor plans are all structural dimensions in millimeter.

圖例 Legend:	BAL	Balcony	露台	KIT	Kitchen	廚房
	LIV	Living Room	客廳	STORE	Store	儲物室
	DIN	Dining Room	飯廳	BEDROOM	Bedroom	睡房
	BATH	Bathroom	浴室	MASTER BEDROOM	Master Bedroom	主人睡房

Second Floor and Roof

1. The internal areas of the residential properties on the upper floors the same as those on the lower floors.
2. Copies of the related electrical and mechanical design drawings are available for free inspection at the sales office.
3. Floor-to-floor height (refer to the height between the top surface of the structural slab of a floor and the top surface of the structural slab of its immediate upper floor) as provided in the building plans : (2.67m)
4. The thickness of floor slabs (excluding plaster) of each residential property as provided in the building plans for the Development: 150 mm.

二樓連天台

1. 住宅物業的較高樓層的結構牆的厚度和內部面積與較低樓層的一樣。
2. 有關之機電設計圖可向售樓處免費查閱。
3. 單位樓面至樓面高度（指該樓層之石屎地台面與上一層之石屎地台面之高度距離）：（2.67 米）。
4. 按發展項目的建築圖則所規定，住宅物業的樓板（不包括灰泥）的厚度為 150 mm。