

**Floor Plans of Residential Properties in the Development**

發展項目的住宅物業的樓面平面圖

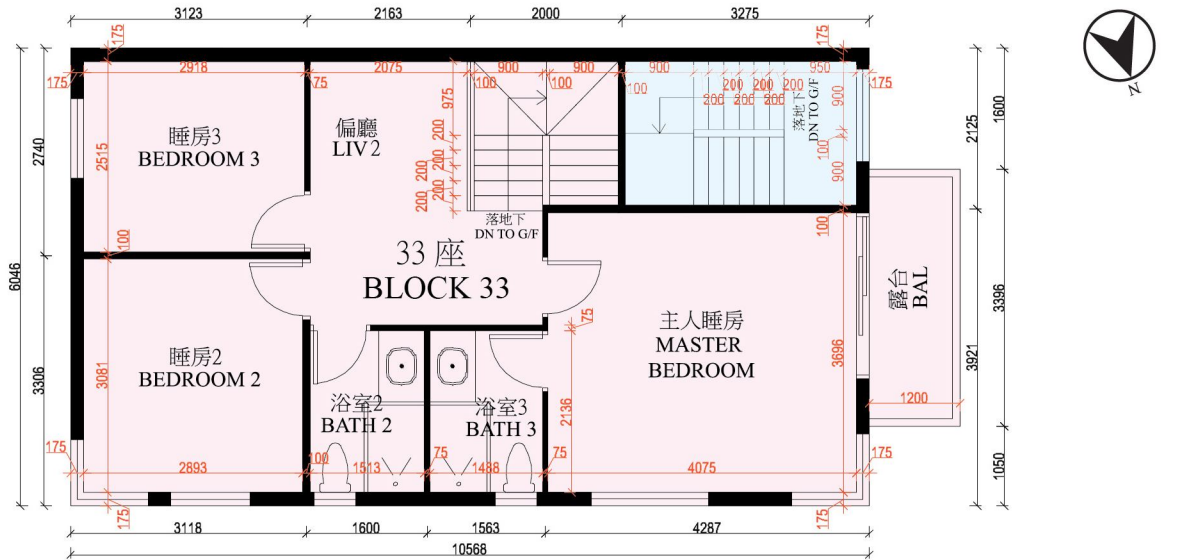
**Block 33 First Floor Plan**

33 座一樓平面圖

Sold before commencement of Residential Properties (First-hand Sales) Ordinance, Cap.621

and are not owned by the Vendor. The plan shows the status of the property when it was sold.)

(第 621 章《住宅物業（第一手銷售）條例》生效日期前已售及不屬賣方擁有。圖示該物業在出售時的狀況。)



備註：平面圖之尺規所列數字以毫米標示之建築結構尺寸。  
 Note: The dimensions of floor plans are all structural dimensions in millimeter.

圖例 Legend:	BAL	Balcony	露台	BEDROOM	Bedroom	睡房
	BATH	Bathroom	浴室	MASTER BEDROOM	Master Bedroom	主人睡房

**Ground Floor and First Floor**

- The internal areas of the residential properties on the upper floors the same as those on the lower floors.
- Copies of the related electrical and mechanical design drawings are available for free inspection at the sales office.
- Floor-to-floor height (refer to the height between the top surface of the structural slab of a floor and the top surface of the structural slab of its immediate upper floor) as provided in the building plans : (2.67m)
- The thickness of floor slabs (excluding plaster) of each residential property as provided in the building plans for the Development: 150 mm.

**地下及一樓**

- 住宅物業的較高樓層的結構牆的厚度和內部面積與較低樓層的一樣。
- 有關之機電設計圖可向售樓處免費查閱。
- 單位樓面至樓面高度（指該樓層之石屎地台面與上一層之石屎地台面之高度距離）：  
(2.67 米)。
- 按發展項目的建築圖則所規定，住宅物業的樓板（不包括灰泥）的厚度為 150 mm。