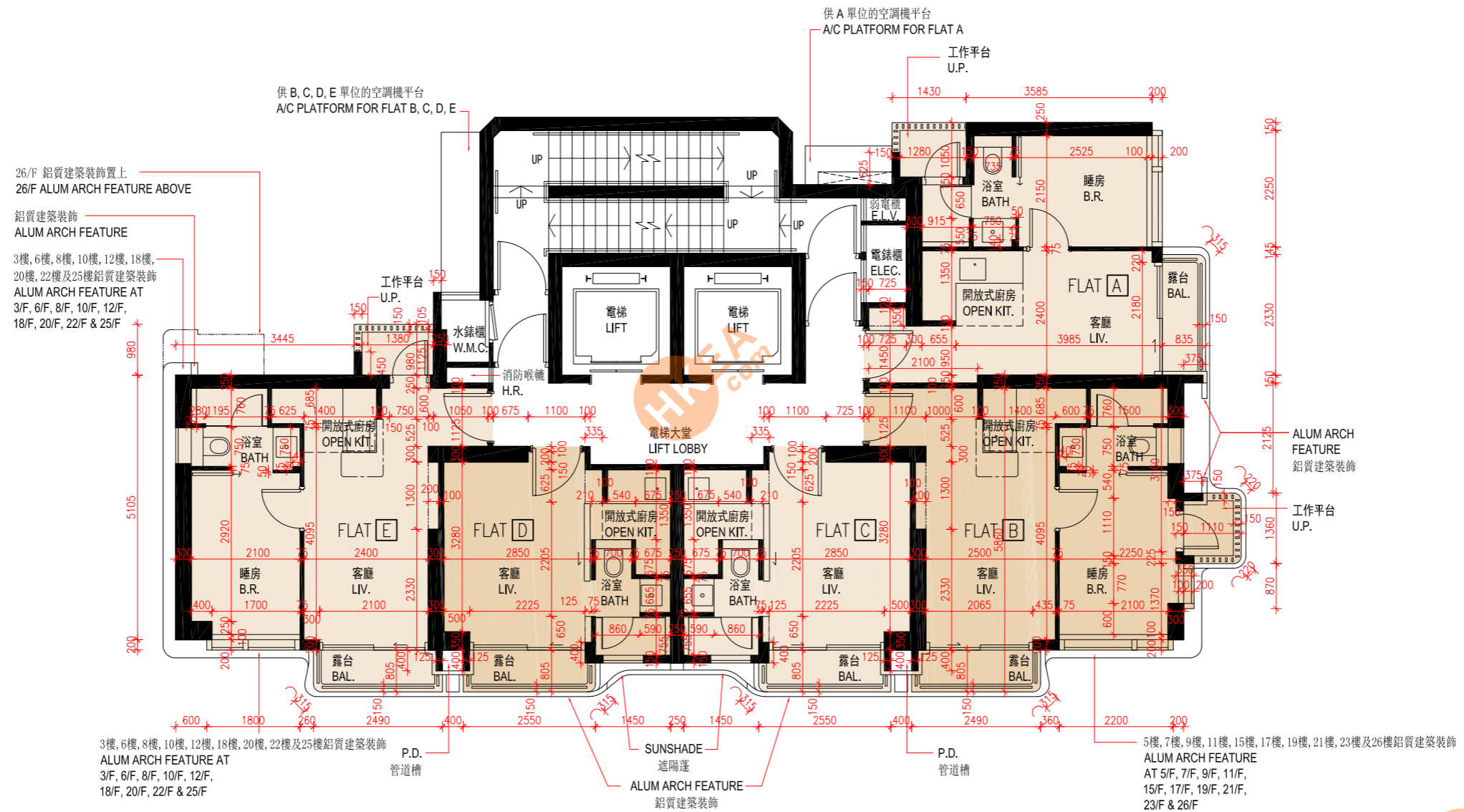


11

FLOOR PLANS OF RESIDENTIAL PROPERTIES IN THE DEVELOPMENT

發展項目的住宅物業的樓面平面圖

3/F, 5/F-12/F, 15/F, 17/F-23/F & 25/F-26/F
 3樓、5樓至12樓、15樓、17樓至23樓及25樓至26樓



The internal areas of the residential properties on the upper floors will generally be slightly larger than those on the lower floors because of the reducing thickness of the structural walls on the upper floors.

因住宅物業的較高樓層的結構牆的厚度遞減，較高樓層的內部面積，一般比較低樓層的內部面積稍大。

Description of Residential Property 物業的描述	Floor 樓層	Flat 單位				
		A	B	C	D	E
The thickness of the floor slabs (excluding plaster) of each residential property (mm) 每個住宅物業的樓板(不包括灰泥)的厚度(毫米)	3/F, 5/F – 12/F, 15/F, 17/F – 23/F, 25/F & 26/F 3樓、5樓至12樓、15樓、 17樓至23樓、25樓及26樓	150				
The floor-to-floor height (refers to the height between the top surface of the structural slab of a floor and the top surface of the structural slab of its immediate upper floor) of each residential property (mm) 每個住宅物業的層與層之間的高度(指該樓層之石屎地台面與上一層石屎地台面之高度距離)(毫米)	3/F 3樓	2800, 3150	2750, 2800, 3150	2800, 3150	2800, 3150	2800, 3150
	5/F – 12/F 5樓至12樓	3150	3150	3150	3150	3150
	15/F 15樓	3150, 3225, 3500	3150, 3225, 3500, 3550	3150, 3225, 3500	3150, 3225, 3500	3150, 3225, 3500
	17/F 17樓	3150	2750, 3150	3150	3150	3150
	18/F – 23/F & 25/F 18樓至23樓及25樓	3150	3150	3150	3150	3150
	26/F 26樓	3150, 3200, 3425, 3500, 3550, 3575, 3850	3150, 3500, 3550, 3575, 3850, 3900	3500, 3575, 3850	3500, 3575, 3850	3150, 3425, 3500, 3575, 3775, 3850

Notes:

- The internal ceiling height within residential properties may vary due to structural, architectural and/or decoration design variations.
- The dimensions in the floor plans are all structural dimension in millimeter.
- Please refer to page 17 of this sales brochure for legend of the terms and abbreviations shown in the floor plan above and the explanatory notes that are applicable thereto.
- The (— · — · —) black dash dotted line within living room indicates the approximate location of built-in cabinet to be provided with the residential property.
- The (— · —) black dash dotted line within living room indicates the approximate location of built-in furniture to be provided with the residential property.

備註：

- 住宅物業之天花高度將會因應其結構、建築及/或裝修設計上的差異而有所不同。
- 樓面平面圖所列之尺寸為以毫米標示之建築結構尺寸。
- 以上平面圖中顯示之名詞、簡稱及其適用的附註，請參閱本售樓說明書第17頁。
- 客廳內的(— · — · —)黑色虛及點線顯示隨住宅物業提供的嵌入式櫃的大約位置。
- 客廳內的(— · —)黑色虛及點線顯示隨住宅物業提供的嵌入式家俬的大約位置。