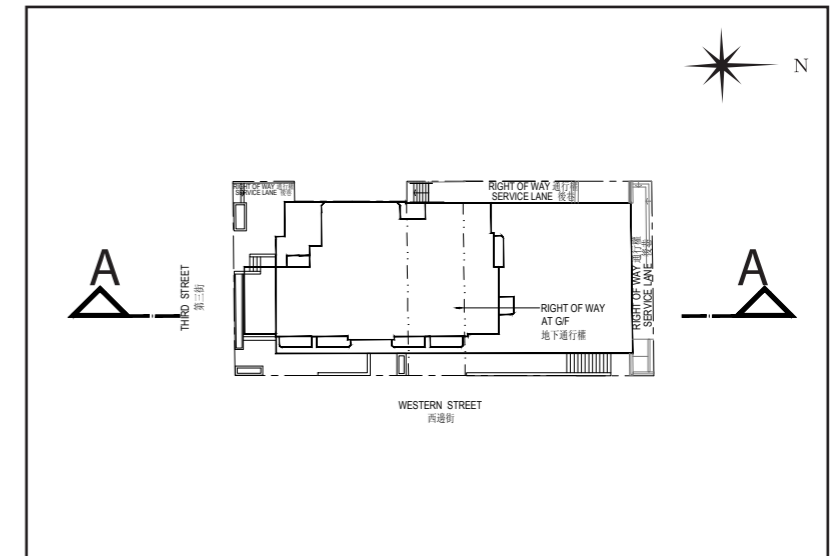
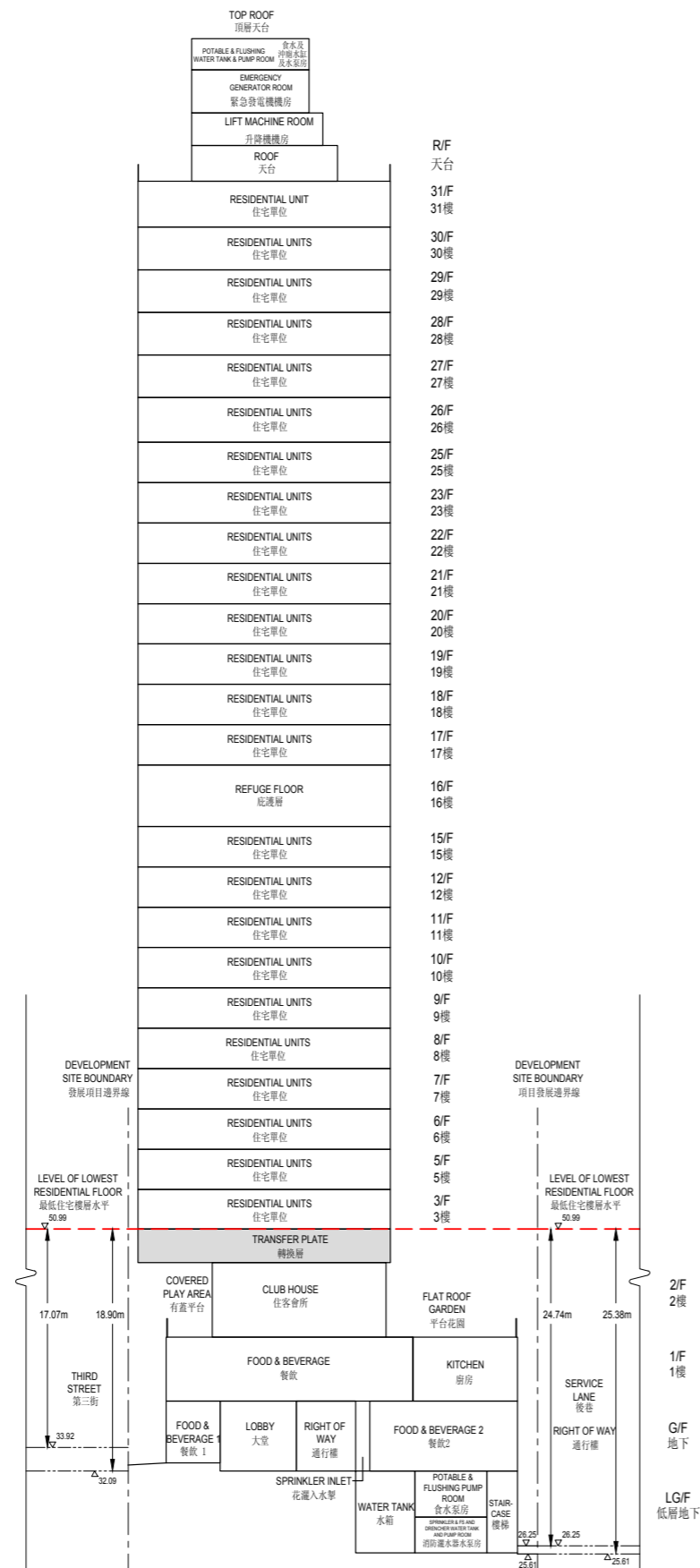


Cross-section Plan A-A
橫截面圖 A-A



圖例 LEGEND

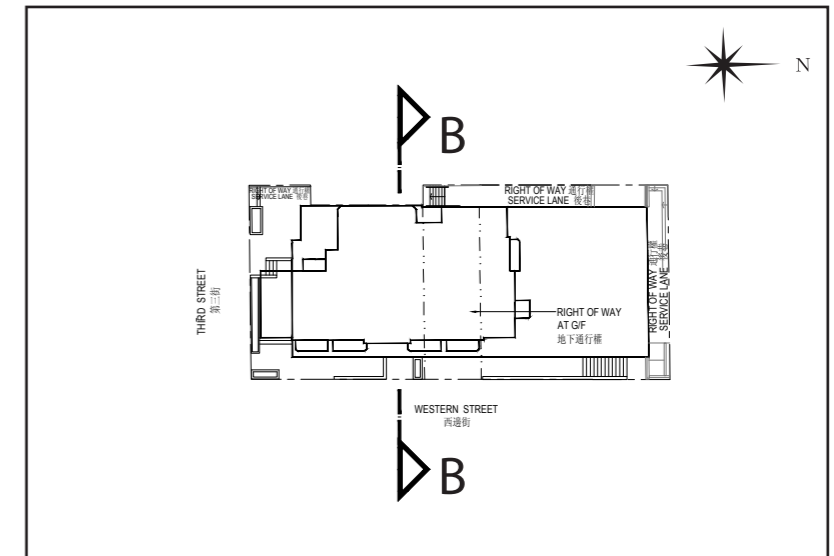
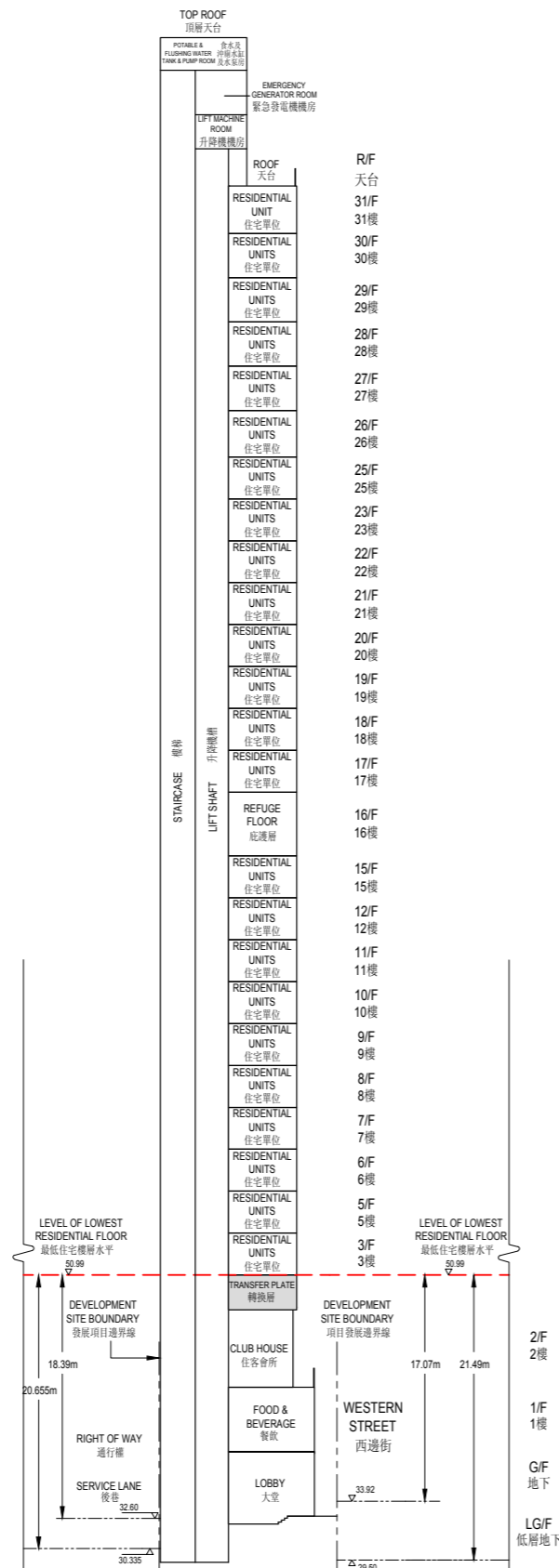
Key Plan 指示圖

- DEVELOPMENT SITE BOUNDARY
發展項目邊界線
- BOUNDARY LINE OF RIGHT OF WAY AT G/F
地下通行權界線

- Note:
- (▽) denotes height (in metres) above the Hong Kong Principal Datum.
 - (---) Dotted line denotes the level of the lowest residential floor.
 - The level of lowest residential floor of the Development is 50.99 metres above Hong Kong Principal Datum (HKPD).
 - The part of service lane adjacent to the north side of the Development is 25.61 to 26.25 metres above Hong Kong Principal Datum (HKPD).
 - The part of Third Street adjacent to the south side of the Development is 32.09 to 33.92 metres above Hong Kong Principal Datum (HKPD).
 - The cross section plan is prepared according to the latest approved general building plans.

- 備註：
- (▽) 代表香港主水平基準以上的高度(米)。
 - (---) 虛線代表最低住宅樓層水平。
 - 發展項目之最低層住宅為香港主水平基準以上 50.99 米。
 - 毗鄰建築物的北面現有後巷一段為香港主水平基準以上約 25.61 米至 26.25 米。
 - 毗鄰建築物的南面第三街一段為香港主水平基準以上約 32.09 米至 33.92 米。
 - 本橫截面圖根據最新的核准圖則制作。

Cross-section Plan B-B 橫截面圖 B-B



圖例 LEGEND

Key Plan 指示圖

- DEVELOPMENT SITE BOUNDARY
發展項目邊界線
- BOUNDARY LINE OF RIGHT OF WAY AT G/F
地下通行權界線

- Note:
- (▽) denotes height (in metres) above the Hong Kong Principal Datum.
 - (---) Dotted line denotes the level of the lowest residential floor.
 - The level of lowest residential floor of the Development is 50.99 metres above Hong Kong Principal Datum (HKPD).
 - The part of service lane adjacent to the west side of the Development is 30.335 to 32.60 metres above Hong Kong Principal Datum (HKPD).
 - The part of Western Street adjacent to the east side of the Development is 29.50 to 33.92 metres above Hong Kong Principal Datum (HKPD).
 - The cross section plan is prepared according to the latest approved general building plans.

- 備註：
- (▽)代表香港主水平基準以上的高度(米)。
 - (---)虛線代表最低住宅樓層水平。
 - 發展項目之最低層住宅為香港主水平基礎以上50.99米。
 - 毗鄰建築物的西面現有後巷一段為香港主水平基礎以上約30.335米至32.60米。
 - 毗鄰建築物的東面西邊街一段為香港主水平基礎以上約29.50米至33.92米。
 - 本橫截面圖根據最新的核准圖則制作。