

# AERIAL PHOTOGRAPH OF THE PHASE 期數的鳥瞰照片



● Location of the Phase  
期數的位置

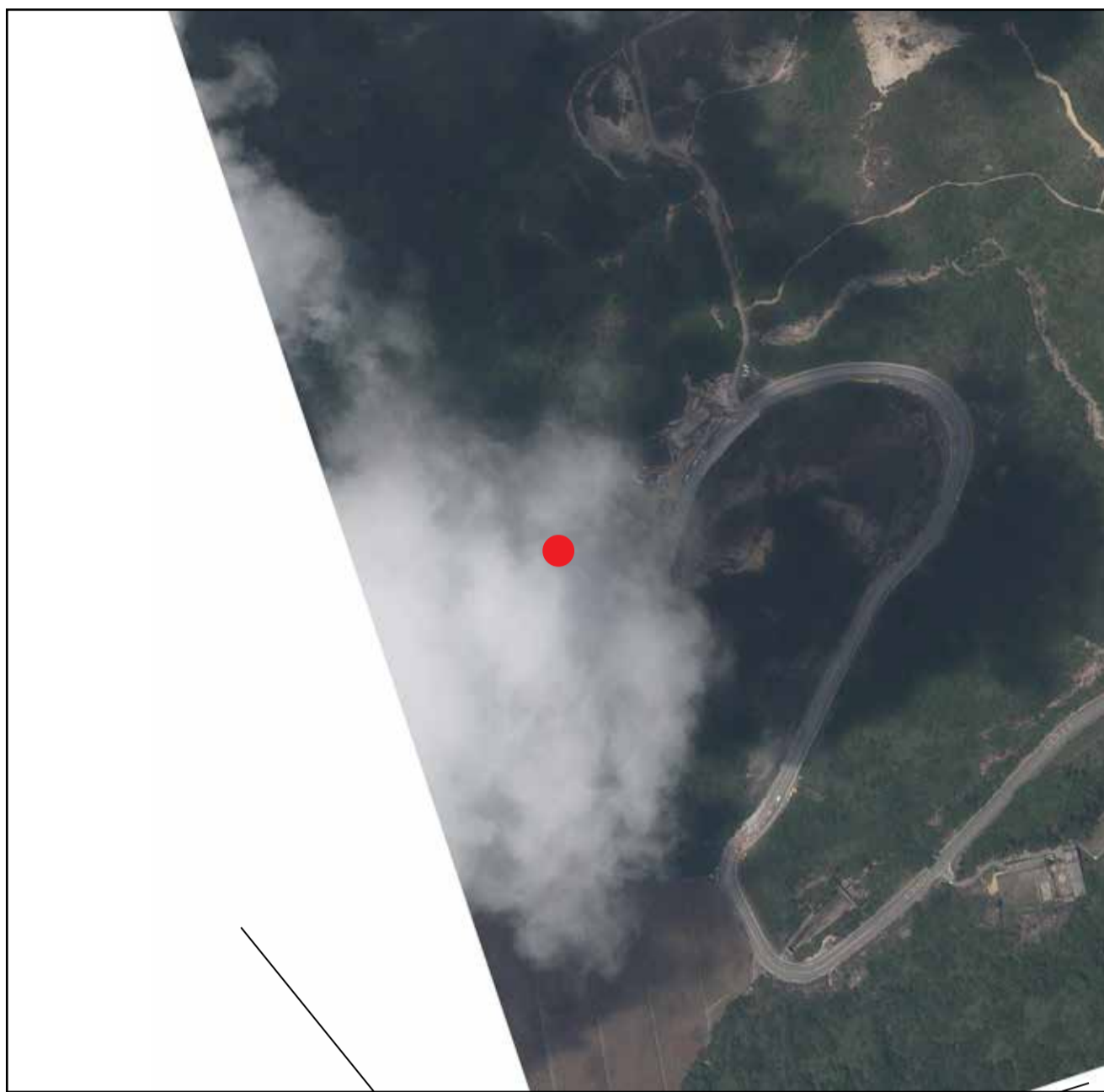
## Notes:

1. Adopted from the aerial photograph taken by the Survey and Mapping Office of Lands Department at a flying height of 6900 feet, photo No. E026741C, dated 28/5/2017.
2. Survey and Mapping Office, Lands Department, The Government of HKSAR © copyright reserved - reproduction by permission only.
3. The aerial photograph may show more than the area required under the Residential Properties (First-hand Sales) Ordinance due to technical reasons.

## 備註：

1. 摘錄自地政總署測繪處於2017年5月28日在6900呎飛行高度拍攝之鳥瞰照片，編號為E026741C。
2. 香港特別行政區政府地政總署測繪處版權所有，未經許可，不得複製。
3. 由於技術原因，鳥瞰照片可能顯示多於《一手住宅物業銷售條例》所要求顯示的範圍。

# AERIAL PHOTOGRAPH OF THE PHASE 期數的鳥瞰照片



These blank areas fall outside the coverage of the aerial photograph.  
此等空白範圍不為本鳥瞰照片所覆蓋。

● Location of the Phase  
期數的位置

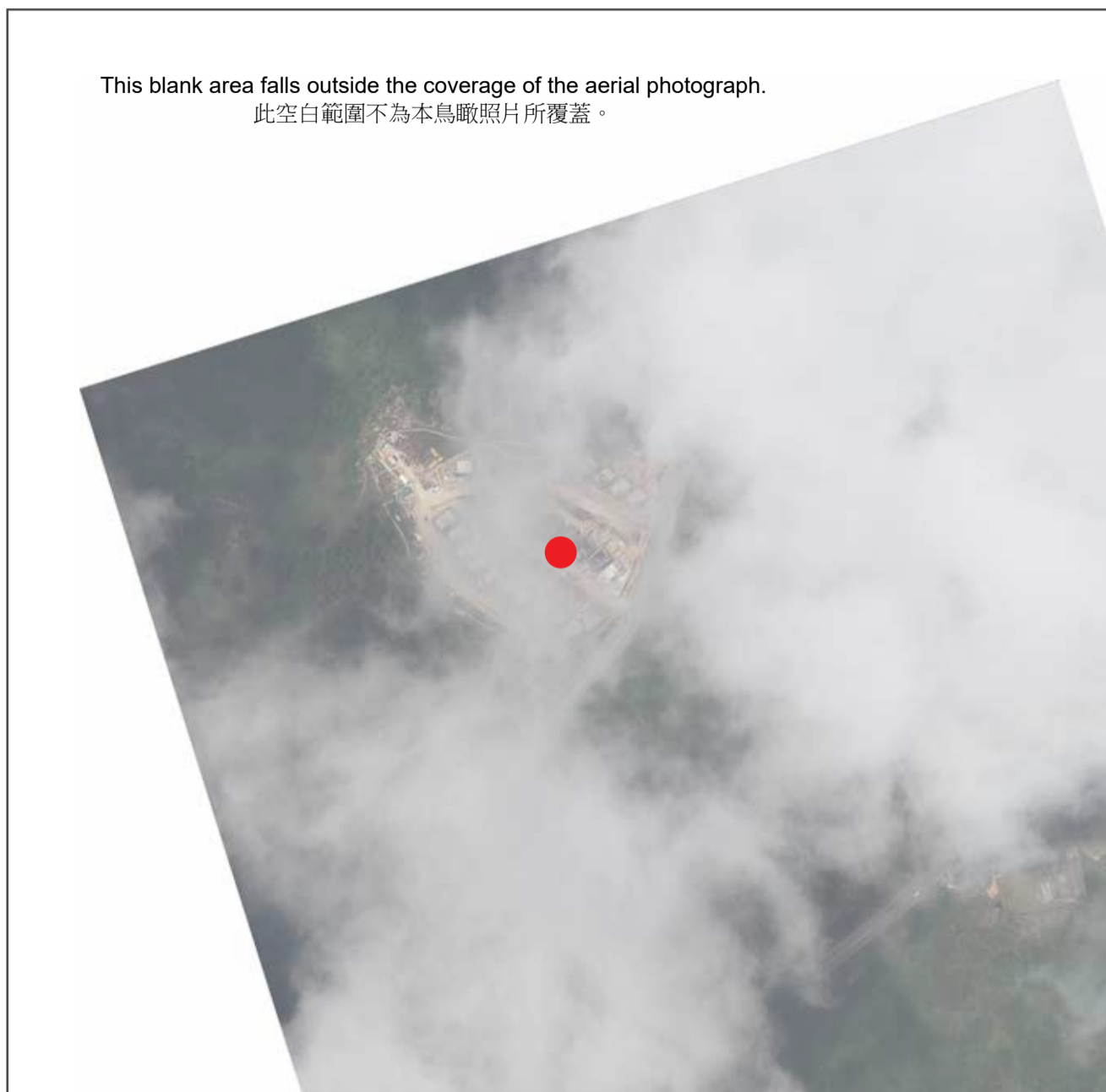
## Notes:

1. Adopted from the aerial photograph taken by the Survey and Mapping Office of Lands Department at a flying height of 6900 feet, photo No. E041470C, dated 21/5/2018.
2. Survey and Mapping Office, Lands Department, The Government of HKSAR © copyright reserved - reproduction by permission only.
3. The aerial photograph may show more than the area required under the Residential Properties (First-hand Sales) Ordinance due to technical reasons.

## 備註：

1. 摘錄自地政總署測繪處於2018年5月21日在6900呎飛行高度拍攝之鳥瞰照片，編號為E041470C。
2. 香港特別行政區政府地政總署測繪處版權所有，未經許可，不得複製。
3. 由於技術原因，鳥瞰照片可能顯示多於《一手住宅物業銷售條例》所要求顯示的範圍。

# AERIAL PHOTOGRAPH OF THE PHASE 期數的鳥瞰照片



● Location of the Phase  
期數的位置

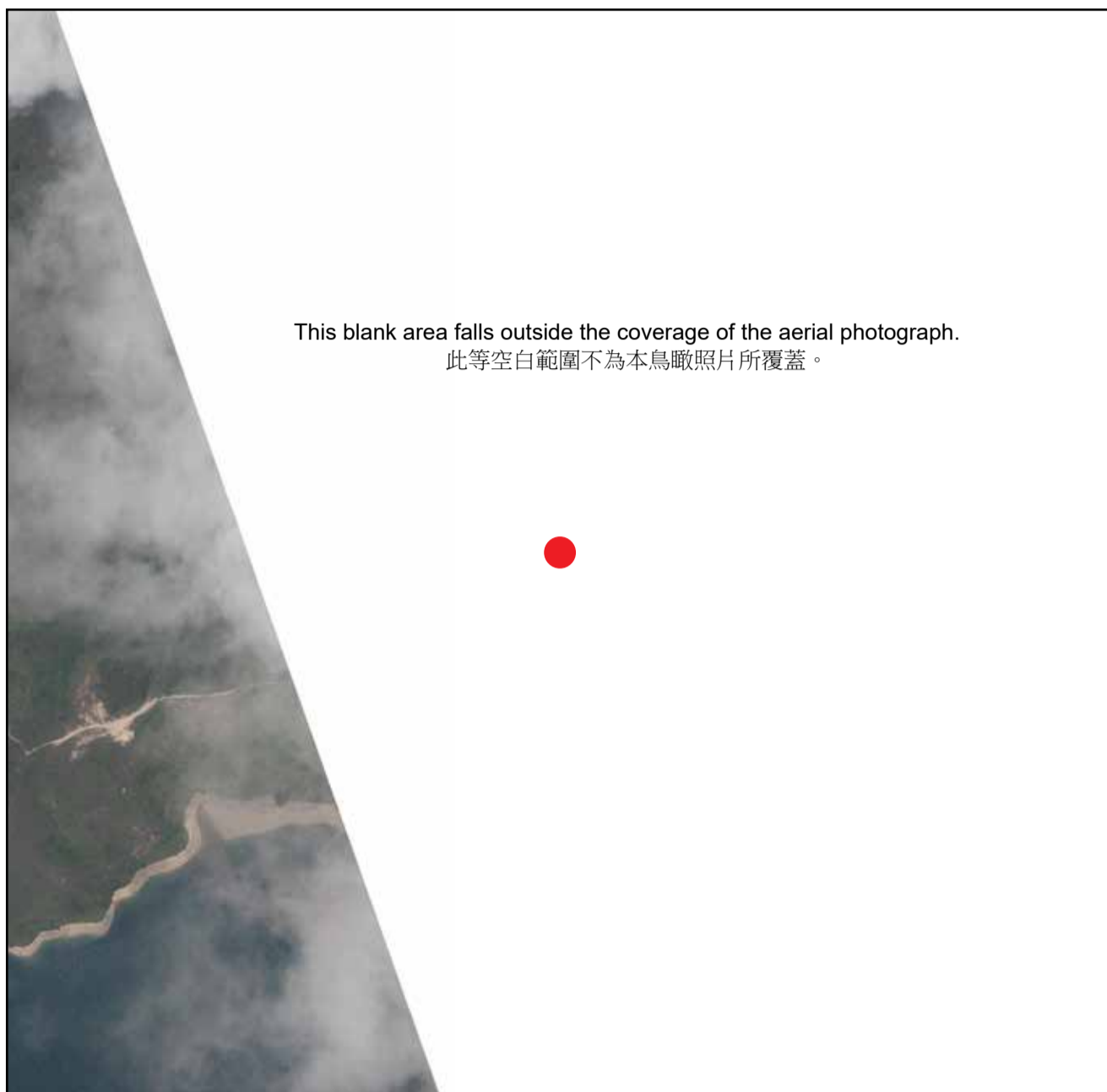
## Notes:

1. Adopted from the aerial photograph taken by the Survey and Mapping Office of Lands Department at a flying height of 6900 feet, photo No. E041008C, dated 21/5/2018.
2. Survey and Mapping Office, Lands Department, The Government of HKSAR © copyright reserved - reproduction by permission only.
3. The aerial photograph may show more than the area required under the Residential Properties (First-hand Sales) Ordinance due to technical reasons.

## 備註：

1. 摘錄自地政總署測繪處於2018年5月21日在6900呎飛行高度拍攝之鳥瞰照片，編號為E041008C。
2. 香港特別行政區政府地政總署測繪處版權所有，未經許可，不得複製。
3. 由於技術原因，鳥瞰照片可能顯示多於《一手住宅物業銷售條例》所要求顯示的範圍。

# AERIAL PHOTOGRAPH OF THE PHASE 期數的鳥瞰照片



● Location of the Phase  
期數的位置

## Notes:

1. Adopted from the aerial photograph taken by the Survey and Mapping Office of Lands Department at a flying height of 6900 feet, photo No. E041471C, dated 21/5/2018.
2. Survey and Mapping Office, Lands Department, The Government of HKSAR © copyright reserved - reproduction by permission only.
3. The aerial photograph may show more than the area required under the Residential Properties (First-hand Sales) Ordinance due to technical reasons.

## 備註：

1. 摘錄自地政總署測繪處於2018年5月21日在6900呎飛行高度拍攝之鳥瞰照片，編號為E041471C。
2. 香港特別行政區政府地政總署測繪處版權所有，未經許可，不得複製。
3. 由於技術原因，鳥瞰照片可能顯示多於《一手住宅物業銷售條例》所要求顯示的範圍。