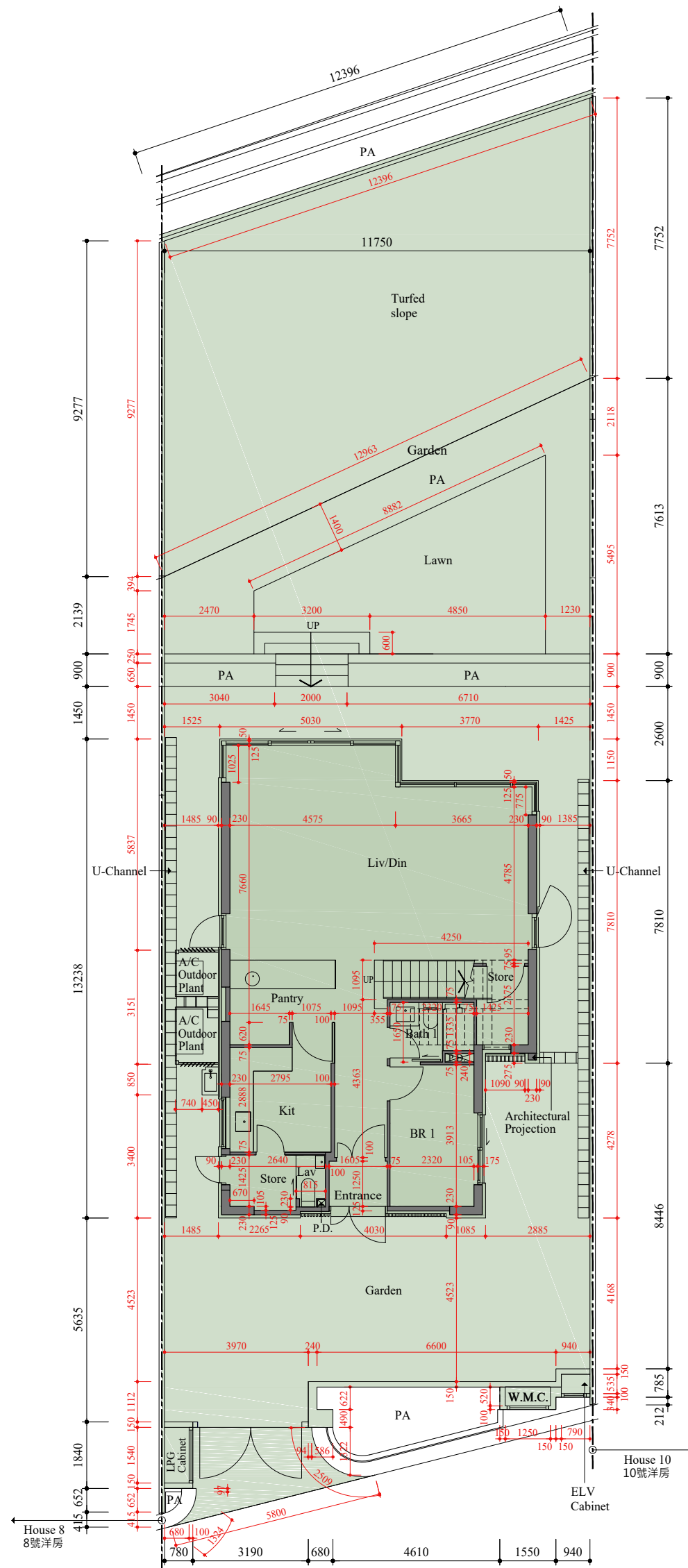
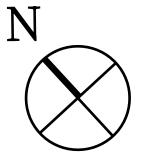


FLOOR PLANS OF RESIDENTIAL PROPERTIES IN THE PHASE 期數的住宅物業的樓面平面圖

HOUSE 9 9號洋房

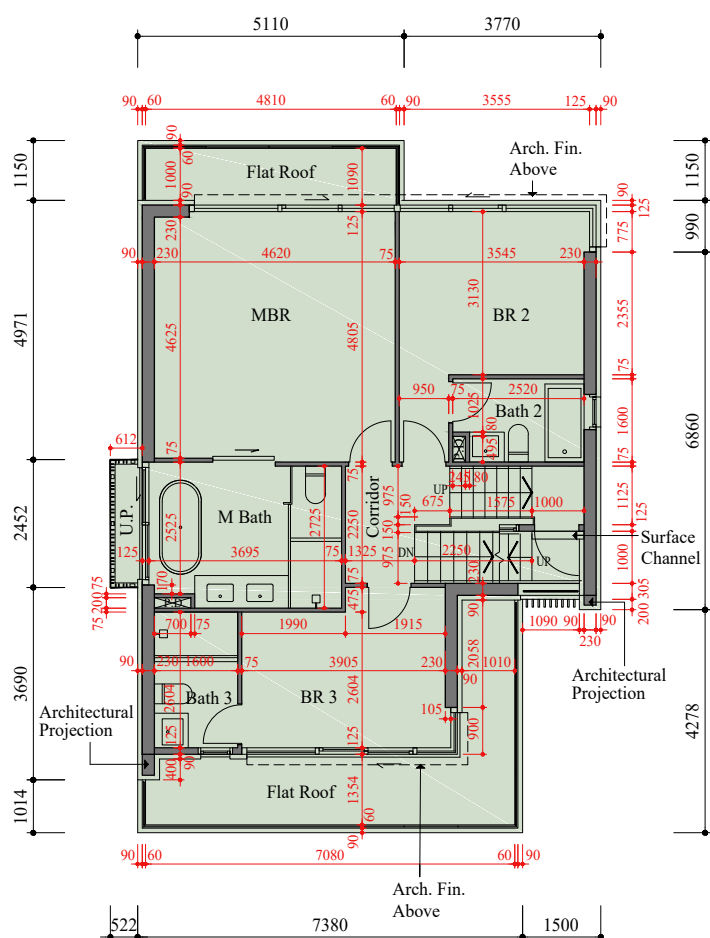


G/F FLOOR PLAN
地下樓面平面圖

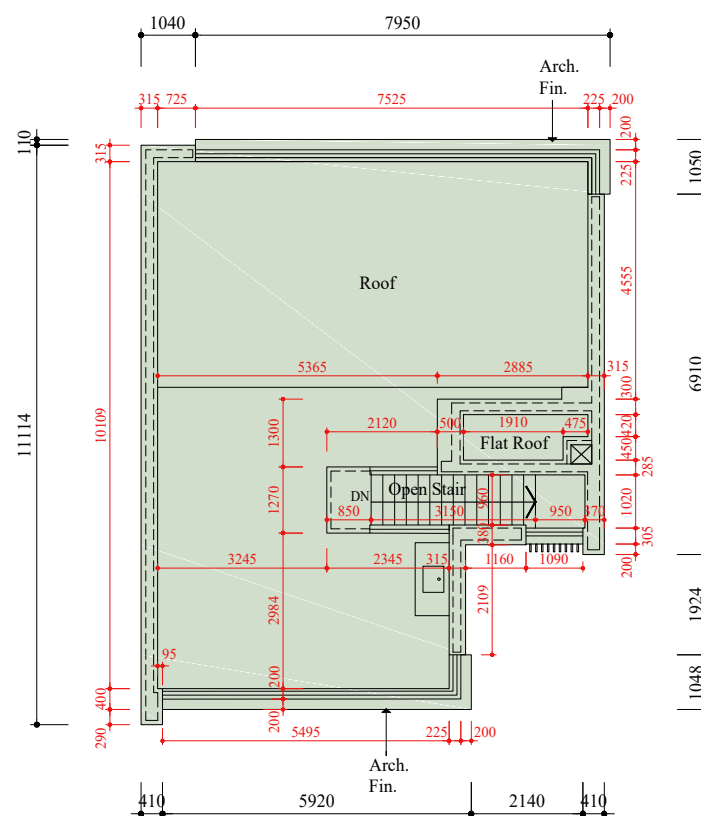
Scale: 0M/米 5M/米
比例:

FLOOR PLANS OF RESIDENTIAL PROPERTIES IN THE PHASE 期數的住宅物業的樓面平面圖

HOUSE 9 9號洋房



1/F FLOOR PLAN
一樓樓面平面圖



ROOF PLAN
天台平面圖

Scale: 0M/米 5M/米
比例： 0 5

Scale: 0M/米 5M/米
比例： 0 5

Each Residential Properties 每個住宅物業	House 洋房	Floors 樓層	G/F 地下	1/F 一樓	Roof 天台
Floor-to-Floor Height (mm) 層與層之間的高度 (毫米)	House 9 9號洋房		4300	3350	Not applicable 不適用
Thickness of Floor Slab (excluding plaster) (mm) 樓板 (不包括灰泥) 的厚度 (毫米)			150, 200, 225	200, 250	

The internal areas of the residential properties on the upper floors will generally be slightly larger than those on the lower floors because of the reducing thickness of the structural walls on the upper floors.

因住宅物業的較高樓層結構牆的厚度遞減，較高樓層的內部面積，一般比較低樓層的內部面積稍大。

Notes:

- There may be architectural features and/or exposed pipes on external walls and/or windows of the residential units. For details, please refer to the latest approved building plans.
- Drainage pipes enclosed in cladding are located adjacent to utility platform of the residential units. Also, drainage pipes will run through the flat roof and/or roof of the residential units.
- The condensers of the VRV air-conditioners are installed on A/C outdoor plant area.
- There are ceiling bulkheads in living/dining rooms, bedrooms, store rooms, corridors and/or kitchens of the residential units for the air-conditioning system and/or M&E services.
- The internal ceiling height within residential units may vary due to structural, architectural and/or decoration design variations.
- Some louvers that are installed at false ceilings may not be indicated on the floor plans.
- Utility platform is a non-enclosed area.
- Symbols of fittings and fitments such as bathtub, sink, water closet, shower, sink counter, etc. are prepared based on the latest approved building plans and are for general indication only.

備註：

- 住宅單位外牆及/或窗戶設有建築裝飾及/或外露喉管，詳細資料請參考最新批准的建築圖則。
- 住宅單位的工作平台側之外牆裝飾板內設有喉管。喉管亦安裝於住宅單位之平台及/或天台內。
- VRV分體式空調冷氣機的冷凝器設於室外冷氣機裝置區。
- 住宅單位客/飯廳、睡房、儲物室、走廊及/或廚房的裝飾橫樑裝置冷氣喉管及/或其他機電設備。
- 住宅單位的天花高度將會因應其結構、建築設計及/或裝修設計上的需要而有差異。
- 部份百葉窗安裝於假天花且沒有於平面圖顯示。
- 工作平台為不可封閉的地方。
- 樓面平面圖上所顯示的裝置符號，如浴缸、洗滌盆、座廁、花灑、洗滌盆櫃等乃按最新的經批准的建築圖則繪製，只作一般示意用途。