

10 發展項目的住宅物業的樓面平面圖 Floor Plans of Residential Properties in the Development

第1座 Tower 1	樓層 Floor	A1	A3	A5	A6	A7	B1	B3	B5	B6	B7	B8	C1	C2	C3	C5	C6	C7	C8
層與層之間的高度(毫米) Floor-to-floor height (mm)	17樓 17/F	3300, 3350, 3600	3300, 3600	3300, 3350, 3600		3300, 3600	3300, 3350, 3600	3300, 3600	3300, 3600		3300, 3350, 3600			3300, 3600			3300, 3350, 3600		
樓板厚度(毫米) Thickness of the floor slabs (mm)		150									150, 200		150		150, 200				

因住宅物業的較高樓層的結構牆的厚度遞減，較高樓層的內部面積，一般比較低樓層的內部面積稍大。

The internal areas of the residential properties on the upper floors will generally be slightly larger than those on the lower floors because of the reducing thickness of the structural walls on the upper floors.

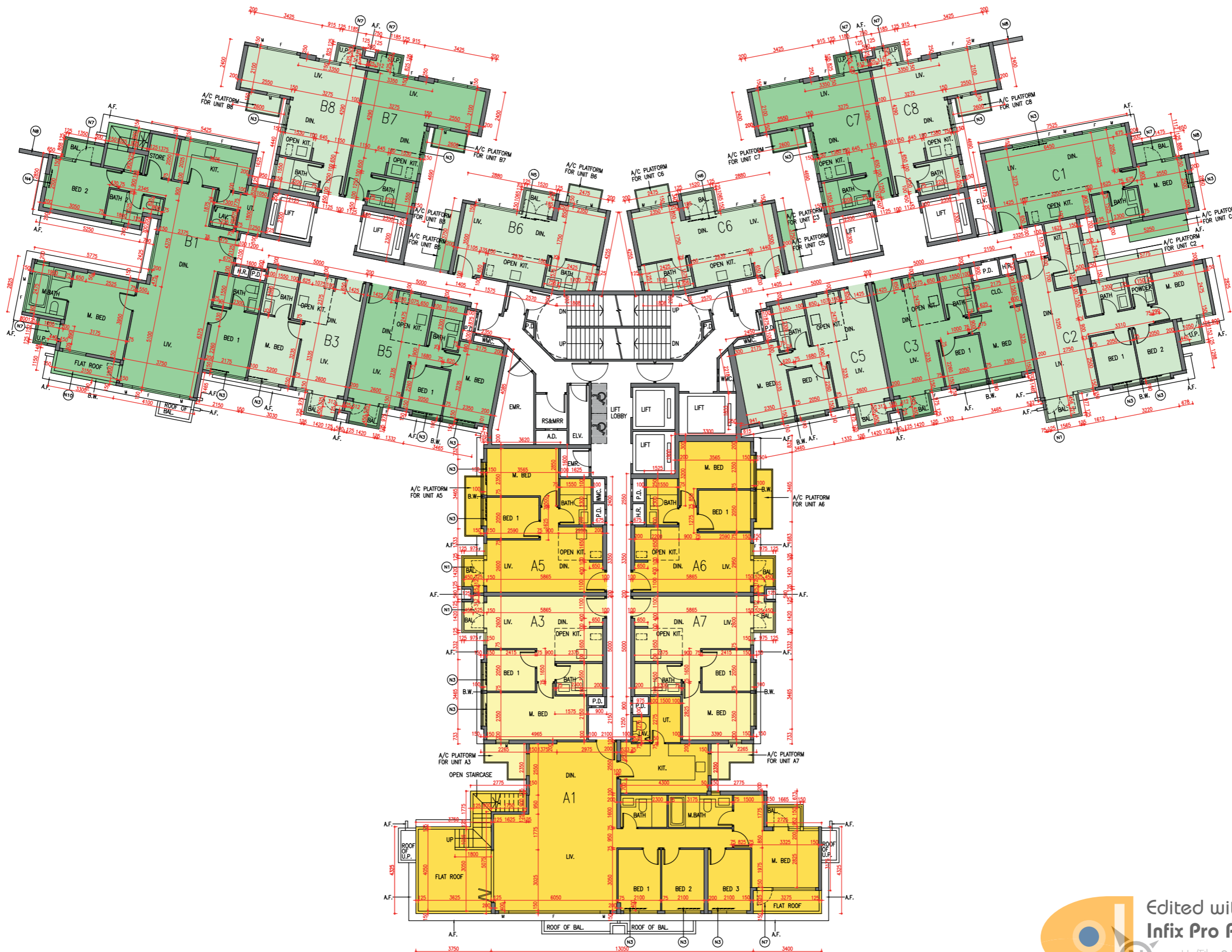
備註：

- 樓面平面圖之尺規所列數字為以毫米標示之建築結構尺寸。
- 每個住宅物業的層與層之間的高度指該樓層之結構地台面與上一層結構地台面之高度距離。
- 每個住宅物業的樓板的厚度不包括灰泥。
- 第1座不設4樓、13樓及14樓。

Notes:

- The dimensions in the floor plans are all structural dimensions in millimetre.
- The floor-to-floor height refers to the height between the top surface of the structural slab of a floor and the top surface of the structural slab of its immediate upper floor of each residential property.
- The thickness of the floor slabs excludes plaster of each residential property.
- 4/F, 13/F and 14/F are omitted in Tower 1.

第1座17樓平面圖
Tower 1, 17/F Floor Plan



Edited with the demo version of
Infix Pro PDF Editor
比例 0米/M 5米/M
To remove this notice, visit:
www.iceni.com/unlock.htm

10 發展項目的住宅物業的樓面平面圖 Floor Plans of Residential Properties in the Development

第1座 Tower 1	樓層 Floor	A1	A3	A7	B1	B3	B5	B7	B8	C1	C2	C3	C5	C7	C8
層與層之間的高度 (毫米) Floor-to-floor height (mm)	天台 Roof	不適用 N/A													
樓板厚度 (毫米) Thickness of the floor slabs (mm)		不適用 N/A													

因住宅物業的較高樓層的結構牆的厚度遞減，較高樓層的內部面積，一般比較低樓層的內部面積稍大。

The internal areas of the residential properties on the upper floors will generally be slightly larger than those on the lower floors because of the reducing thickness of the structural walls on the upper floors.

備註：

- 樓面平面圖之尺規所列數字為以毫米標示之建築結構尺寸。
- 每個住宅物業的層與層之間的高度指該樓層之結構地台面與上一層結構地台面之高度距離。
- 每個住宅物業的樓板的厚度不包括灰泥。
- 第1座不設4樓、13樓及14樓。

Notes:

- The dimensions in the floor plans are all structural dimensions in millimetre.
- The floor-to-floor height refers to the height between the top surface of the structural slab of a floor and the top surface of the structural slab of its immediate upper floor of each residential property.
- The thickness of the floor slabs excludes plaster of each residential property.
- 4/F, 13/F and 14/F are omitted in Tower 1.

第1座天台平面圖
Tower 1, Roof Floor Plan

