

10 發展項目的住宅物業的樓面平面圖 Floor Plans of Residential Properties in the Development

第2座 Tower 2	樓層 Floor	複式單位A Duplex A	複式單位B Duplex B	複式單位C Duplex C	複式單位D Duplex D
層與層之間的高度(毫米) Floor-to-floor height (mm)	2樓 2/F	3300			
樓板厚度(毫米) Thickness of the floor slabs (mm)		150			

因住宅物業的較高樓層的結構牆的厚度遞減，較高樓層的內部面積，一般比較低樓層的內部面積稍大。

The internal areas of the residential properties on the upper floors will generally be slightly larger than those on the lower floors because of the reducing thickness of the structural walls on the upper floors.

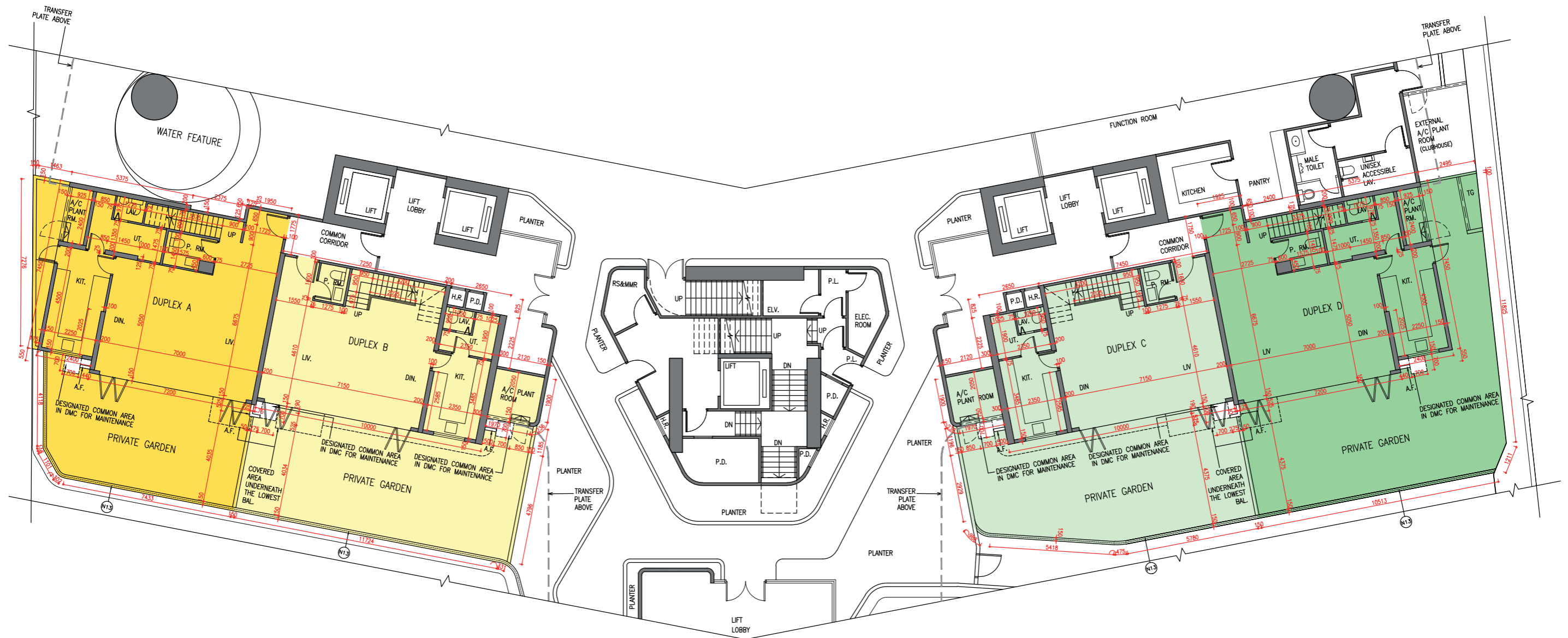
備註：

- 樓面平面圖之尺規所列數字為以毫米標示之建築結構尺寸。
- 每個住宅物業的層與層之間的高度指該樓層之結構地台面與上一層結構地台面之高度距離。
- 每個住宅物業的樓板的厚度不包括灰泥。
- 第2座不設3樓、4樓、13樓及14樓。

Notes:

- The dimensions in the floor plans are all structural dimensions in millimetre.
- The floor-to-floor height refers to the height between the top surface of the structural slab of a floor and the top surface of the structural slab of its immediate upper floor of each residential property.
- The thickness of the floor slabs excludes plaster of each residential property.
- 3/F, 4/F, 13/F and 14/F are omitted in Tower 2.

第2座2樓平面圖
Tower 2, 2/F Floor Plan



10 發展項目的住宅物業的樓面平面圖 Floor Plans of Residential Properties in the Development

第2座 Tower 2	樓層 Floor	複式單位A Duplex A	複式單位B Duplex B	複式單位C Duplex C	複式單位D Duplex D
層與層之間的高度(毫米) Floor-to-floor height (mm)	2樓之上層 Upper Part of 2/F	3300			
樓板厚度(毫米) Thickness of the floor slabs (mm)		150			

因住宅物業的較高樓層的結構牆的厚度遞減，較高樓層的內部面積，一般比較低樓層的內部面積稍大。

The internal areas of the residential properties on the upper floors will generally be slightly larger than those on the lower floors because of the reducing thickness of the structural walls on the upper floors.

備註：

- 樓面平面圖之尺規所列數字為以毫米標示之建築結構尺寸。
- 每個住宅物業的層與層之間的高度指該樓層之結構地台面與上一層結構地台面之高度距離。
- 每個住宅物業的樓板的厚度不包括灰泥。
- 第2座不設3樓、4樓、13樓及14樓。

Notes:

- The dimensions in the floor plans are all structural dimensions in millimetre.
- The floor-to-floor height refers to the height between the top surface of the structural slab of a floor and the top surface of the structural slab of its immediate upper floor of each residential property.
- The thickness of the floor slabs excludes plaster of each residential property.
- 3/F, 4/F, 13/F and 14/F are omitted in Tower 2.

第2座2樓之上層平面圖

Tower 2, Upper Part of 2/F Floor Plan

