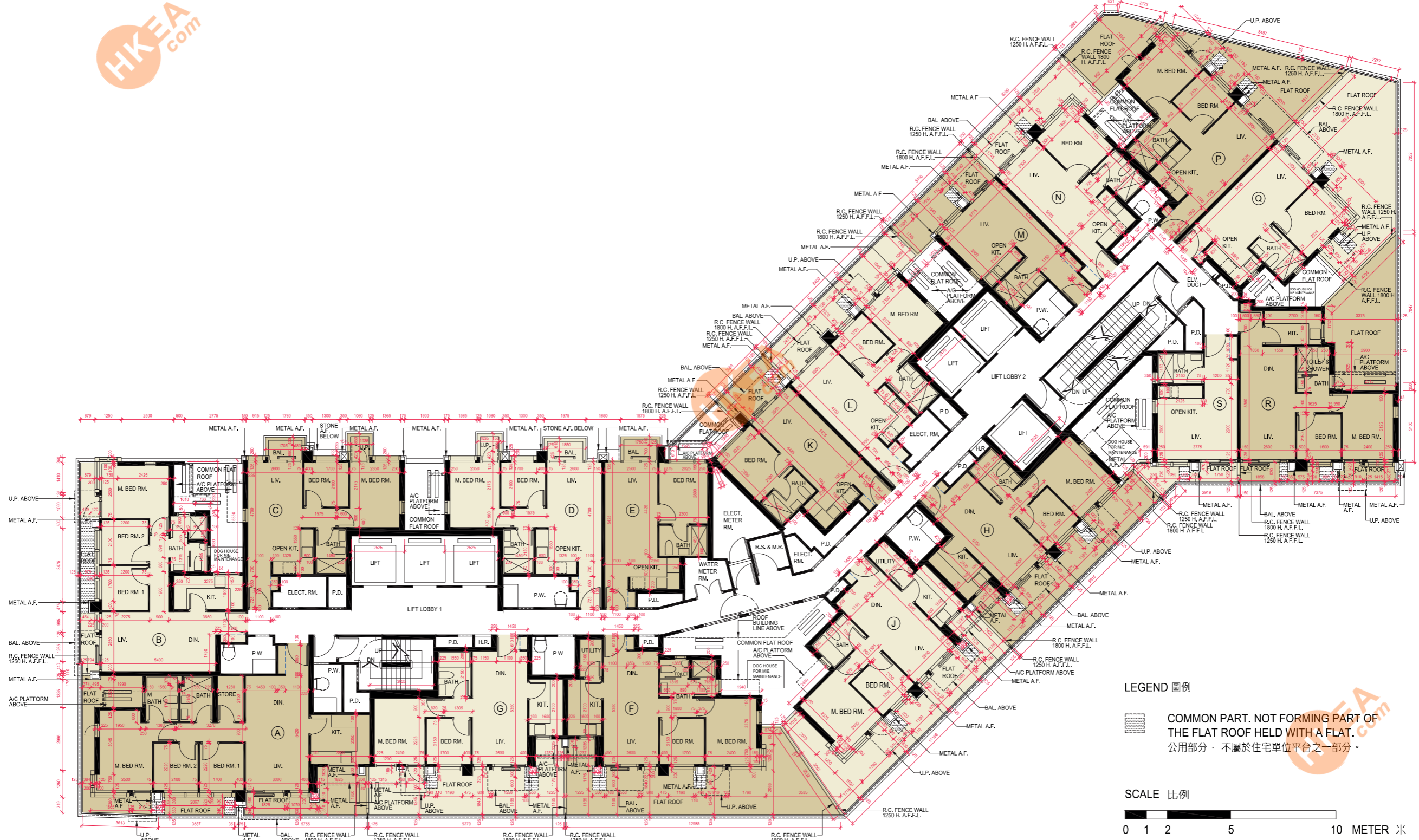


# 11 FLOOR PLANS OF RESIDENTIAL PROPERTIES IN THE PHASE 期數中的住宅物業的樓面平面圖

3/F Floor Plan  
3樓樓面平面圖



**LEGEND 圖例**

COMMON PART. NOT FORMING PART OF THE FLAT ROOF HELD WITH A FLAT. 公用部分，不屬於住宅單位平台之一部分。

**SCALE 比例**

0 1 2 5 10 METER 米

# 11 FLOOR PLANS OF RESIDENTIAL PROPERTIES IN THE PHASE

## 期數中的住宅物業的樓面平面圖

	Floor 樓層	Units 單位								
		A	B	C	D	E	F	G	H	J
Thickness of the floor slabs (excluding plaster) of each residential property (mm) 每個住宅物業的樓板 (不包括灰泥)的厚度(毫米)	3/F 3樓	125, 135, 150	125, 150	125, 150	125, 150	125, 150	125, 150	125, 150	125, 150	125, 150
The floor-to-floor height of each residential property (mm) 每個住宅物業的 層與層之間的高度(毫米)		2825, 3025, 3075, 3375, 3425, 3475	2725, 2825, 3025, 3050, 3075, 3175, 3300, 3375, 3475	2975, 3025, 3050, 3075, 3300, 3325	2725, 2950, 2975, 3025, 3075, 3300	2725, 3025, 3075, 3175, 3300, 3375, 3425	2725, 2825, 3025, 3075, 3375, 3475	2825, 3025, 3075, 3175, 3475	2825, 3025, 3075, 3325, 3375, 3425, 3475	2825, 3025, 3075, 3175, 3375, 3475

	Floor 樓層	Units 單位							
		K	L	M	N	P	Q	R	S
Thickness of the floor slabs (excluding plaster) of each residential property (mm) 每個住宅物業的樓板 (不包括灰泥)的厚度(毫米)	3/F 3樓	125, 150	125, 150	125, 150	125, 150	125, 150	125, 150	125, 150	125, 150
The floor-to-floor height of each residential property (mm) 每個住宅物業的 層與層之間的高度(毫米)		2725, 3025, 3050, 3075, 3175, 3300, 3375, 3425, 3475	3025, 3050, 3075, 3300, 3375, 3425, 3475	2825, 2975, 3025, 3075, 3125, 3275, 3375, 3475	2825, 3025, 3050, 3075, 3375, 3475	2725, 2825, 3075, 3125, 3275, 3375, 3475	2725, 2825, 3025, 3075, 3375, 3475	2725, 2825, 3025, 3075, 3375, 3425, 3475	2725, 3025, 3075, 3275, 3475

The internal areas of the residential properties on the upper floors will generally be slightly larger than those on the lower floors because of the reducing thickness of the structural walls on the upper floors.

Notes :

1. The dimension in the floor plans are all structural dimensions in millimetre.
2. The floor-to-floor height refers to the height between the top surface of the structural slab of a floor and the top surface of the structural slab of its immediate upper floor.
3. Please refer to glossary in the beginning of this chapter for abbreviations shown in the floor plan.
4. There may be architectural features on external walls of some residential properties. For details, please refer to the latest approved building plans.
5. The (---) blue dotted line within living/dining room indicates the approximate location of built-in cabinet to be provided with the residential property.

因住宅物業的較高樓層的結構牆的厚度遞減，較高樓層的內部面積，一般比較低樓層的內部面積稍大。

備註：

1. 樓面平面圖所列之尺寸為以毫米標示之建築結構尺寸。
2. 每個住宅物業的層與層之間的高度指該樓層之石屎地台面與上一層石屎地台面之高度距離。
3. 有關平面圖中顯示之英文簡稱之詮釋，請參閱本章節開首之詞彙表。
4. 部份住宅物業外牆可以設有建築裝飾。詳情請參考最新批准之建築圖則。
5. 客/飯廳內的(---)藍色虛線顯示隨住宅物業附送的嵌入式櫃的大約位置。