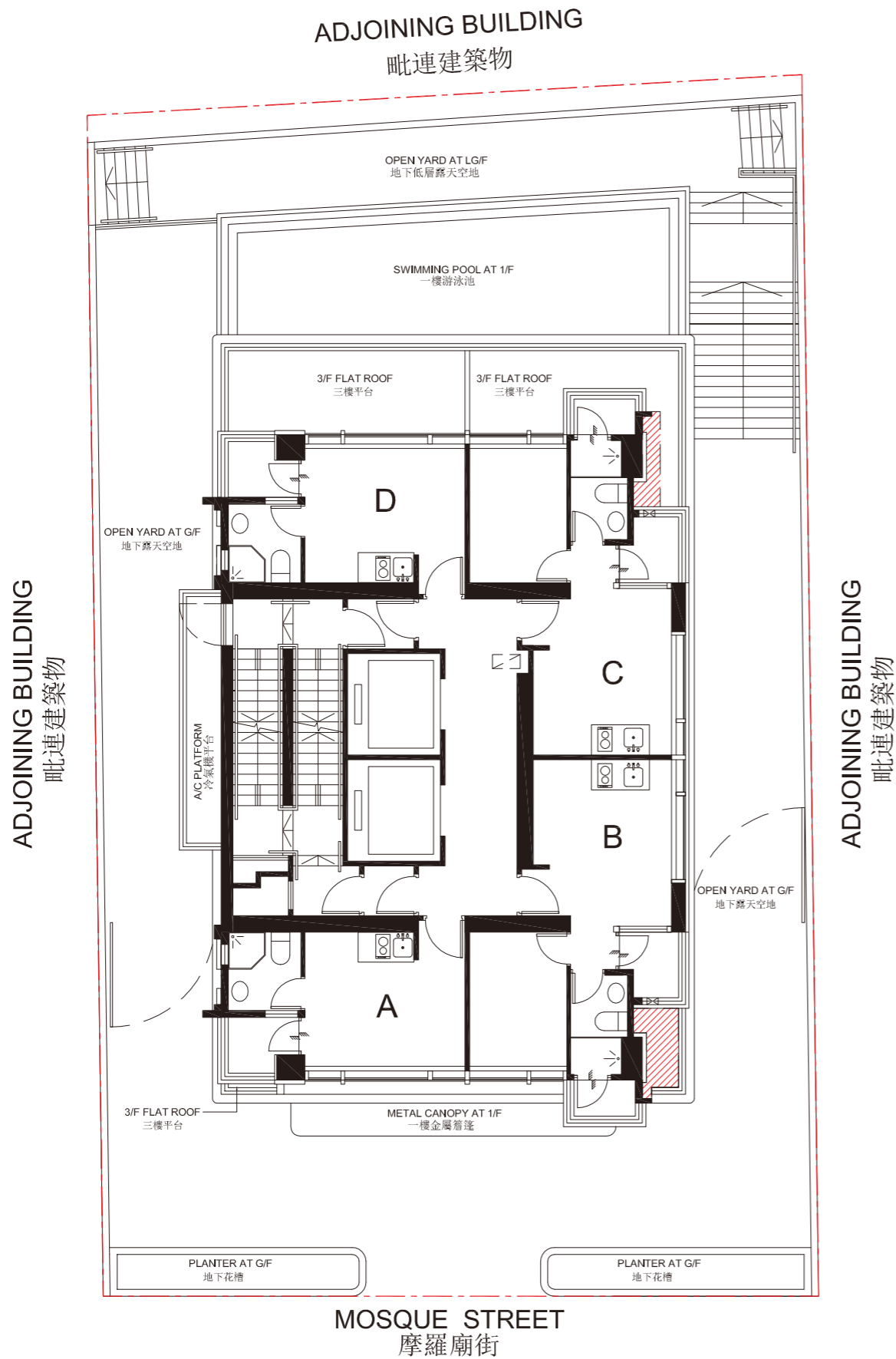


LAYOUT PLAN OF  
THE DEVELOPMENT



由發展項目的認可人士提供的該等建築物及設施的預計落成日期為 2021 年 3 月 31 日。

The estimated date of completion of the building and facilities within the Development as provided by the authorized person for the Development is 31 March 2021.

----- 發展項目的界線  
Boundary line of the Development

A/C PLATFORM = 冷氣機平台  
Air-conditioning Platform

 大廈公契界定為公用地方以供吊船維修管道的空間  
Common Areas Under Deed of Mutual Covenant for Pipe Works Maintenance Access By Gondola

比例尺 SCALE:   
0m (米) 5m (米)

備註：  
圖中所示之發展項目住宅大樓布局參照適用於 8 樓至 30 樓 (不設 13 樓、14 樓及 24 樓)。

Note:  
The layout of the residential tower of the Development shown in the plan is based on the layout applicable to 8/F to 30/F (Floor numberings of 13/F, 14/F and 24/F are omitted).