
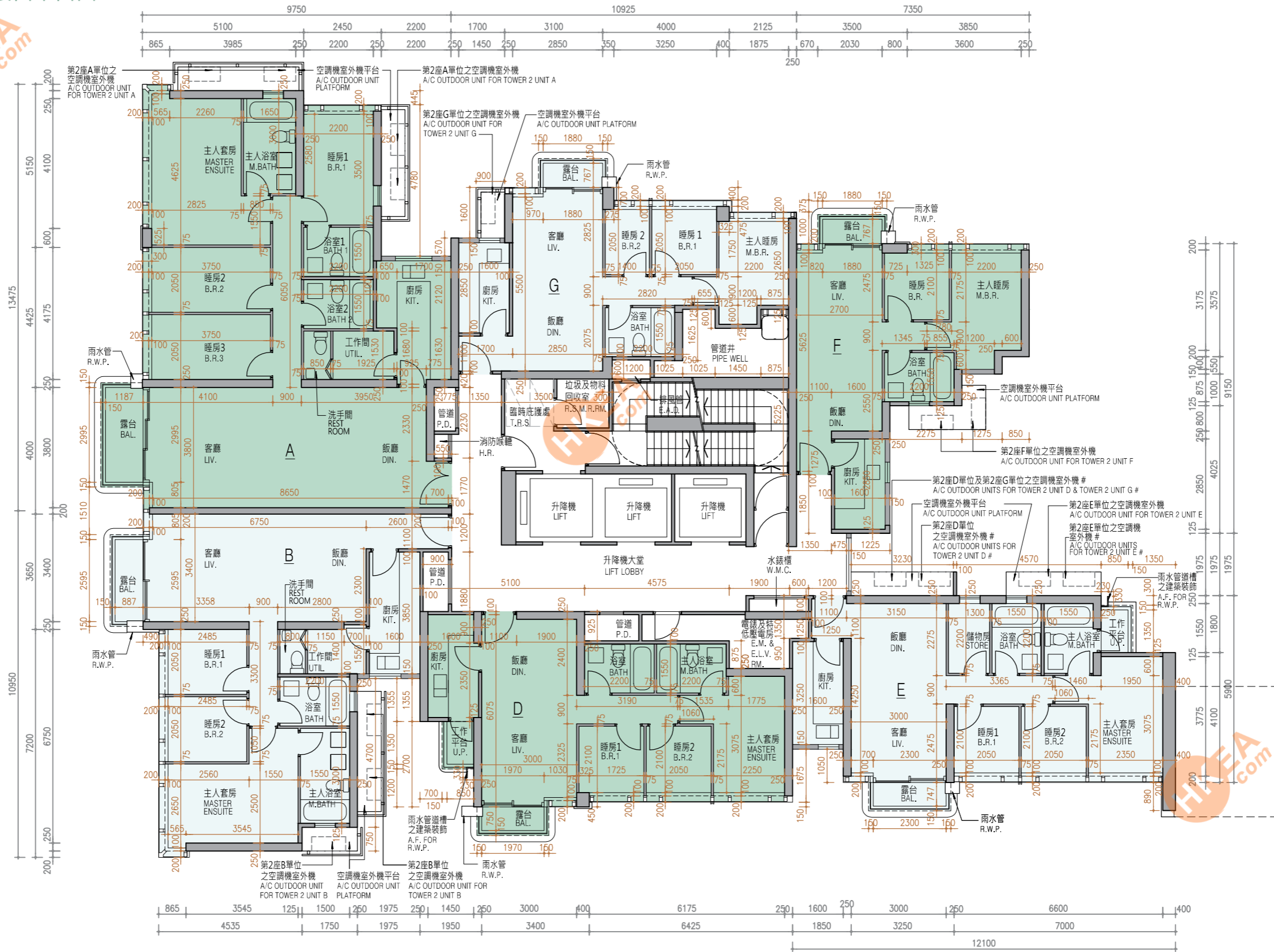


# 11 FLOOR PLANS OF RESIDENTIAL PROPERTIES IN THE PHASE

## 期數的住宅物業的樓面平面圖

TOWER 2 21/F FLOOR PLAN  
第2座 21樓 樓面平面圖

Scale:  5M/米  
比例：0M/米 5M/米



# TWO AIR-CONDITIONING OUTDOOR UNITS WILL BE INSTALLED WITH A DOUBLE DECK SYSTEM

# 兩部空調機室外機將會以雙層系統形式安裝

# 11 FLOOR PLANS OF RESIDENTIAL PROPERTIES IN THE PHASE

## 期數的住宅物業的樓面平面圖

	Tower 座數	Floor 樓層	Units 單位					
			A	B	D	E	F	G
The thickness of the floor slabs (excluding plaster) of each residential property (mm) 每個住宅物業的樓板（不包括灰泥）的厚度（毫米）	Tower 2 第2座	21/F 21樓	150	150	150	150, 200	150	150
The floor-to-floor height (i.e. the height between the top surface of the structural slab of a floor and the top surface of the structural slab of its immediate upper floor) of each residential property (mm) 每個住宅物業的層與層之間的高度（指該樓層之石屎地台面與上一層石屎地台面之高度距離）（毫米）			3150, 3150 <sup>^</sup> , 3150 <sup>**</sup> , 3150 <sup>##</sup> , 3150 <sup>^^</sup>	3150, 3150 <sup>^</sup> , 3150 <sup>#</sup> , 3150 <sup>**</sup> , 3150 <sup>##</sup>	3150, 3150 <sup>^</sup> , 3150 <sup>#</sup> , 3150 <sup>**</sup>	3150, 3150 <sup>^</sup> , 3150 <sup>**</sup>	3150, 3150 <sup>^</sup> , 3150 <sup>**</sup>	3150, 3150 <sup>^</sup> , 3150 <sup>**</sup>



The internal areas of the residential properties on the upper floors will generally be slightly larger than those on the lower floors because of the reducing thickness of the structural walls on the upper floors. (Note: Not Applicable)

Notes :

- The dimensions in the floor plans are all structural dimensions in millimetre.
- <sup>^</sup> Inclusive of the sunken depth of the sunken slab on the floor of this floor (250mm)
- <sup>#</sup> Inclusive of the sunken depth of the sunken slab on the floor of this floor (300mm)
- <sup>\*\*</sup> Inclusive of the sunken depth of the sunken slab on the floor of this floor (350mm)
- <sup>##</sup> Inclusive of the sunken depth of the sunken slab on the floor of this floor (375mm)
- <sup>^^</sup> Inclusive of the sunken depth of the sunken slab on the floor of this floor (400mm)

因住宅物業的較高樓層的結構牆的厚度遞減，較高樓層的內部面積，一般比較低樓層的內部面積稍大。（註：不適用）

備註：

- 樓面平面圖所列之尺寸為以毫米標示之建築結構尺寸。
- <sup>^</sup> 包括本層地台跌級樓板之跌級深度 (250毫米)
- <sup>#</sup> 包括本層地台跌級樓板之跌級深度 (300毫米)
- <sup>\*\*</sup> 包括本層地台跌級樓板之跌級深度 (350毫米)
- <sup>##</sup> 包括本層地台跌級樓板之跌級深度 (375毫米)
- <sup>^^</sup> 包括本層地台跌級樓板之跌級深度 (400毫米)

