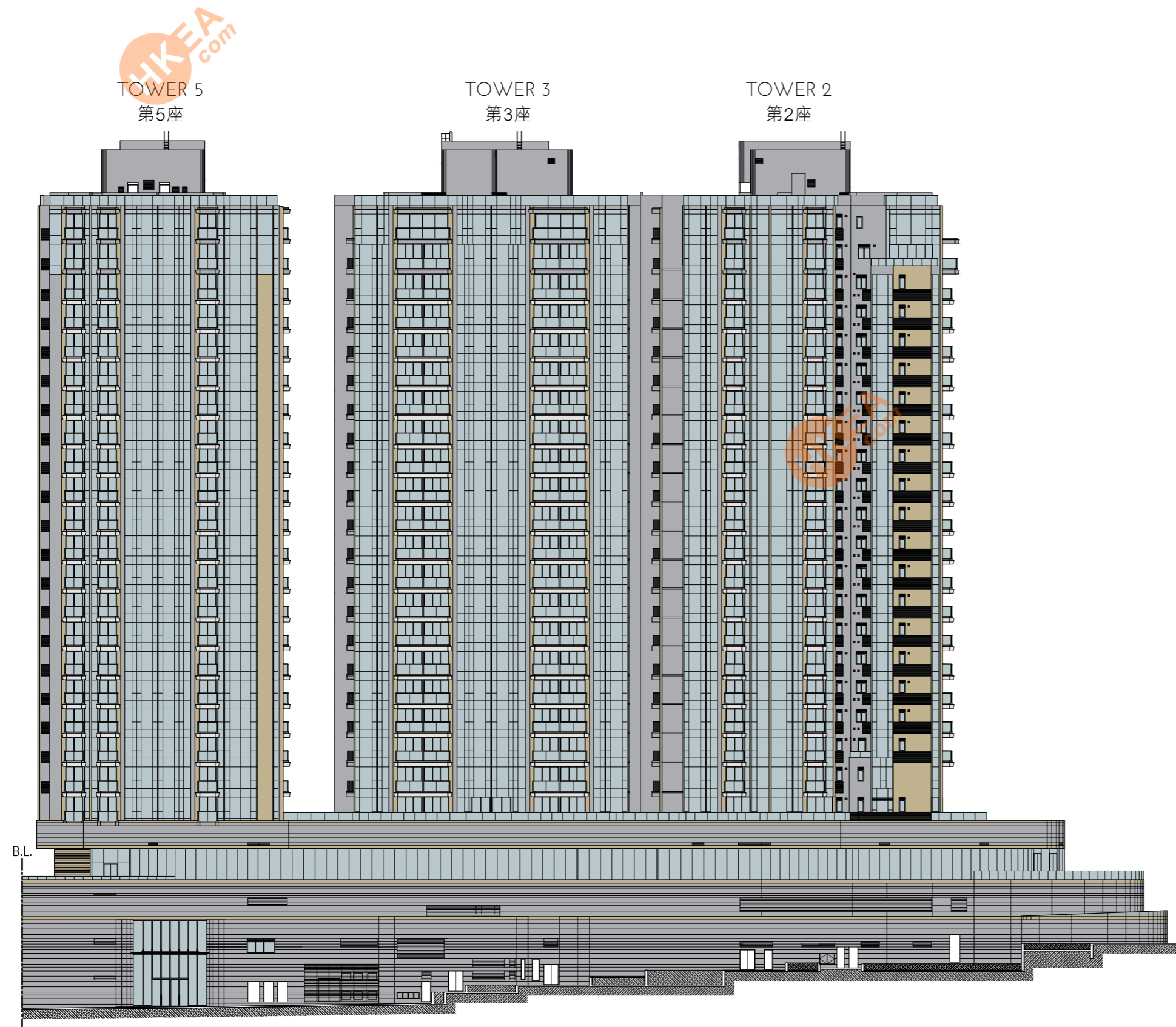
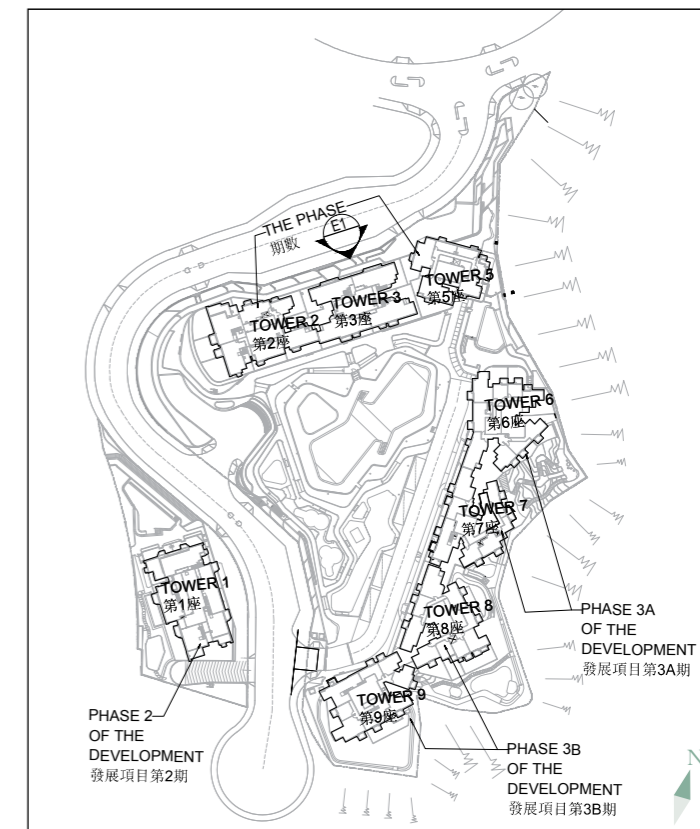


Elevation 1
立面圖 1



Key Plan
索引圖



Legend 圖例 :

B.L. Boundary of the Development
發展項目的界線

Authorized Person for the Phase has certified that the elevations shown on these plans:

期數的認可人士證明本圖所顯示的立面 :

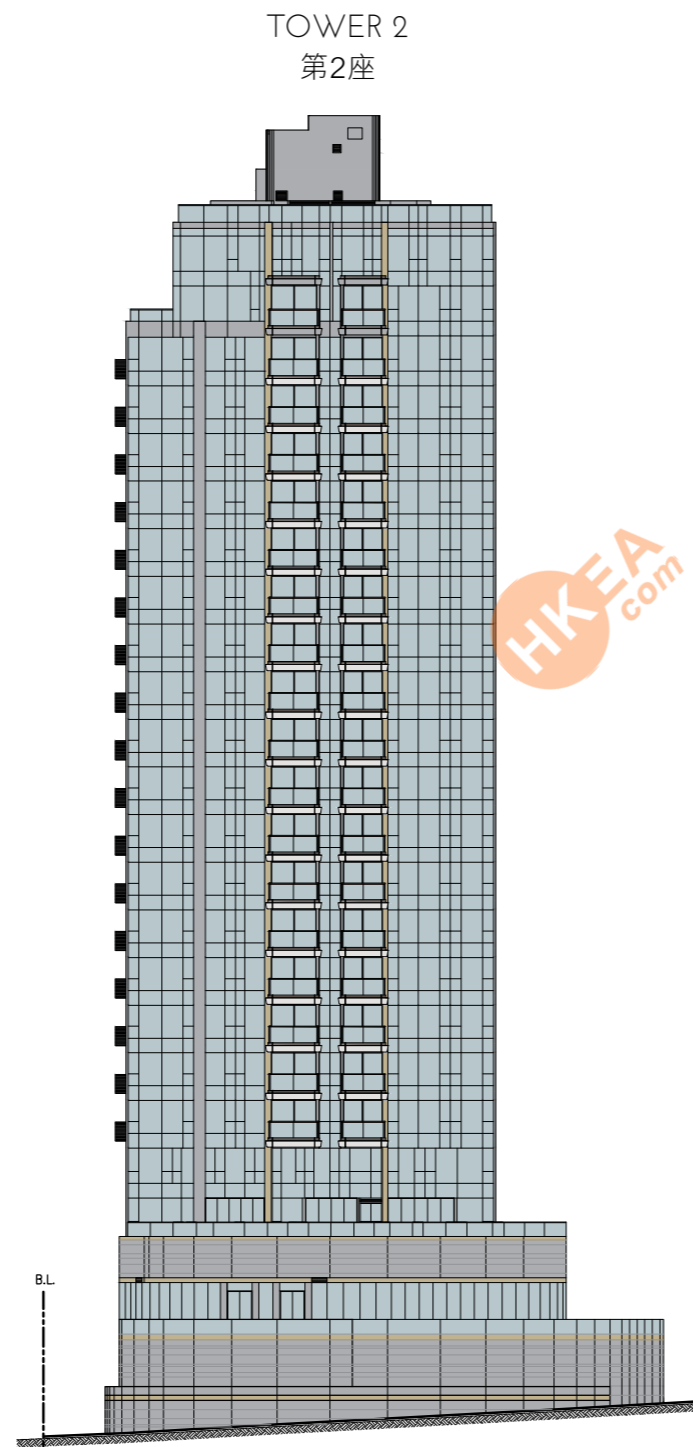
- (1) are prepared on the basis of the approved building plans for the Phase as of 23 October 2020 and the approved phasing plans for the Phase as of 21 April 2020; and

以2020年10月23日的情況為準的期數的經批准的建築圖則及以2020年4月21日的情況為準的期數的經批准的期數圖則為基礎擬備；及

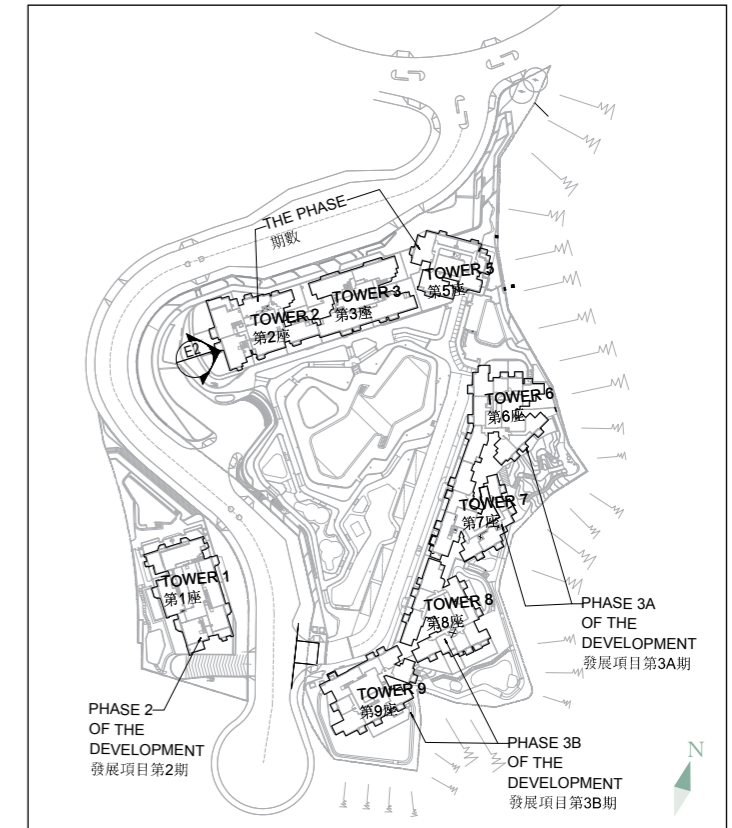
- (2) are in general accordance with the outward appearance of the Phase.

大致上與期數的外觀一致。

Elevation 2
立面圖 2



Key Plan
索引圖



Legend 圖例 :

B.L. Boundary of the Development
發展項目的界線

Authorized Person for the Phase has certified that the elevations shown on these plans:

期數的認可人士證明本圖所顯示的立面：

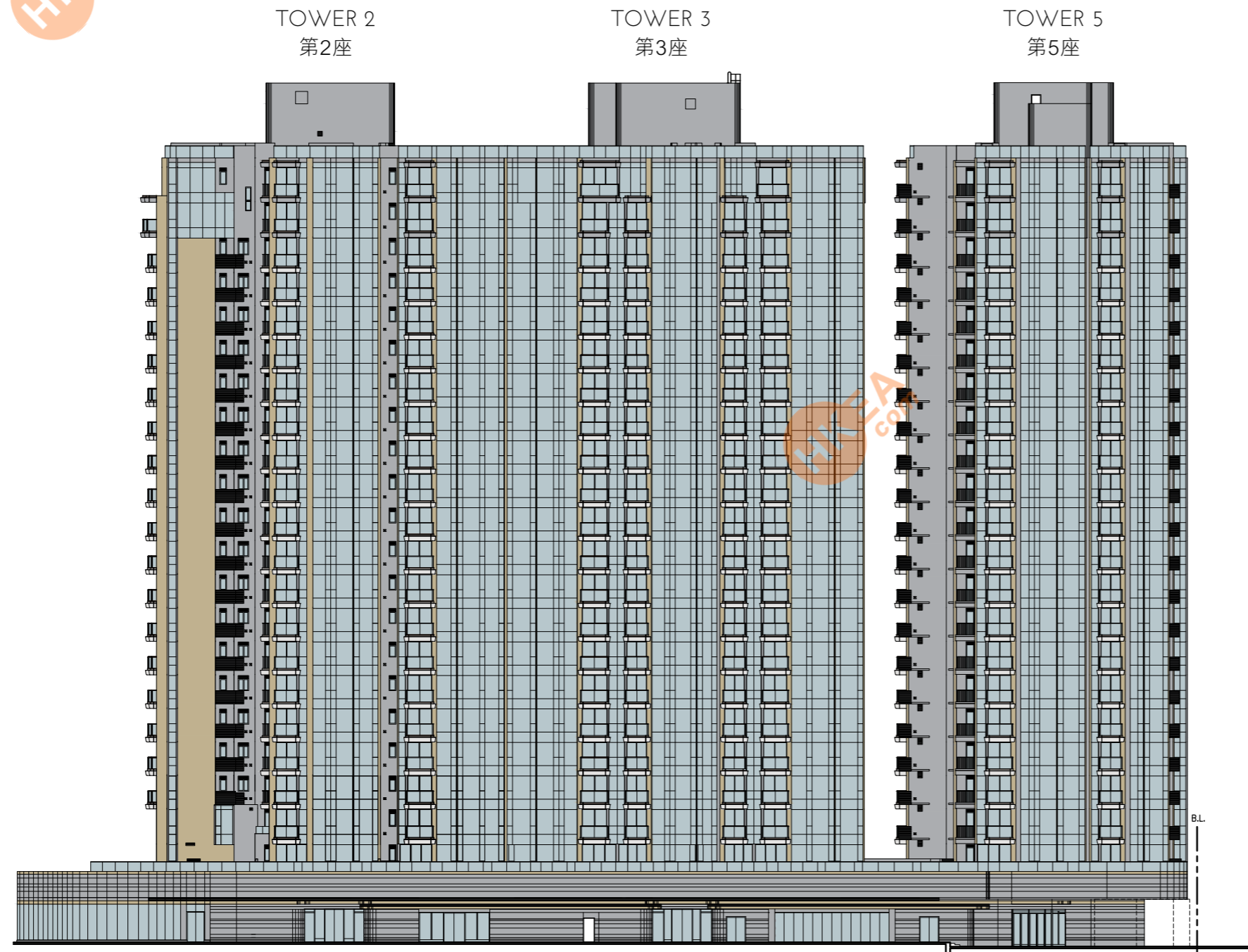
- (1) are prepared on the basis of the approved building plans for the Phase as of 23 October 2020 and the approved phasing plans for the Phase as of 21 April 2020; and

以2020年10月23日的情況為準的期數的經批准的建築圖則及以2020年4月21日的情況為準的期數的經批准的期數圖則為基礎擬備；及

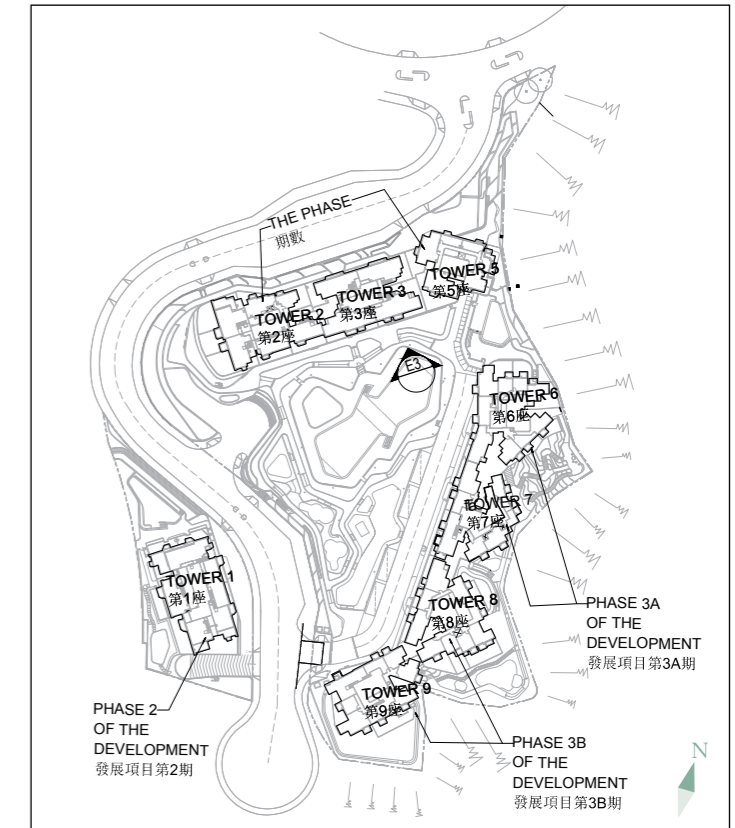
- (2) are in general accordance with the outward appearance of the Phase.

大致上與期數的外觀一致。

Elevation 3
立面圖 3



Key Plan
索引圖



Legend 圖例 :

B.L. Boundary of the Development
發展項目的界線

Authorized Person for the Phase has certified that the elevations shown on these plans:

期數的認可人士證明本圖所顯示的立面 :

- (1) are prepared on the basis of the approved building plans for the Phase as of 23 October 2020 and the approved phasing plans for the Phase as of 21 April 2020; and

以2020年10月23日的情況為準的期數的經批准的建築圖則及以2020年4月21日的情況為準的期數的經批准的期數圖則為基礎擬備；及

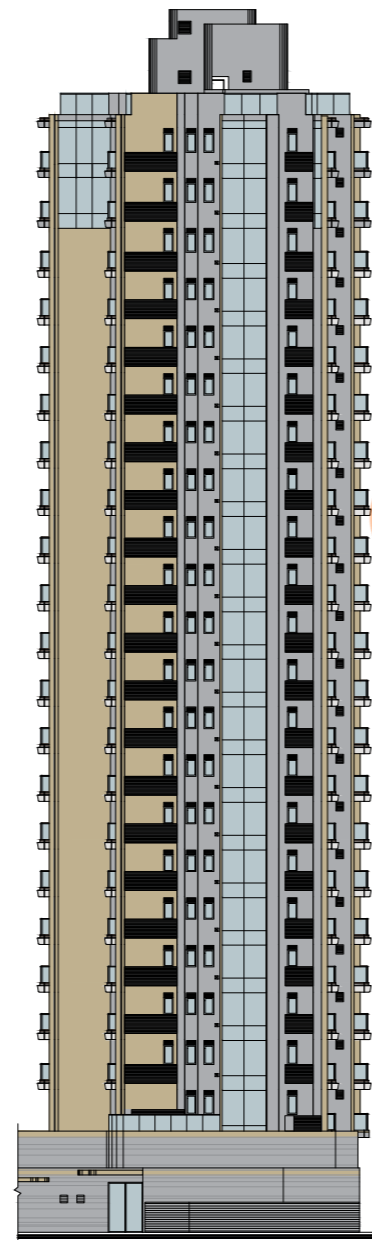
- (2) are in general accordance with the outward appearance of the Phase.

大致上與期數的外觀一致。

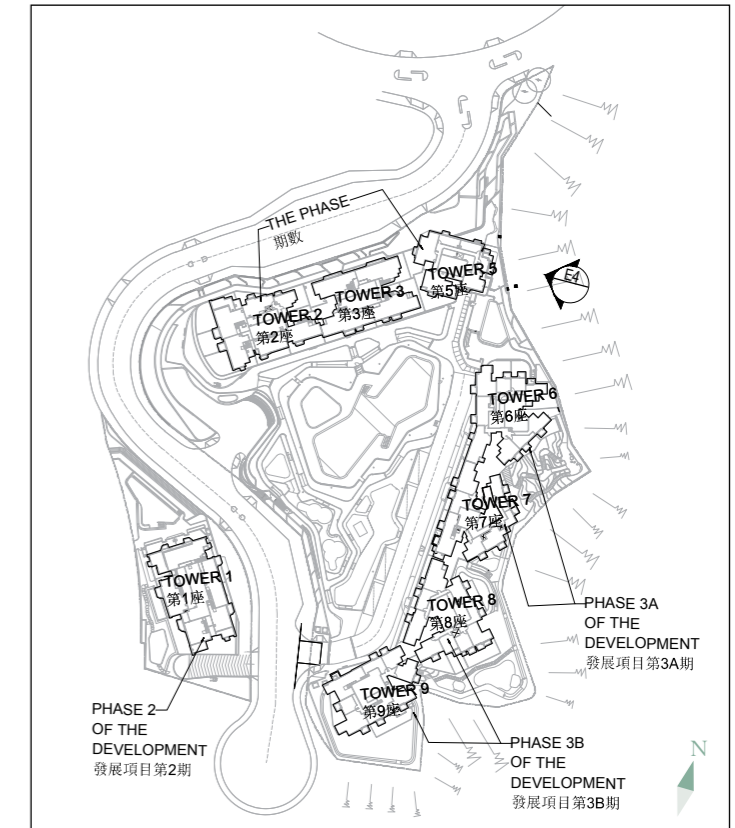
Elevation 4
立面圖 4



TOWER 5
第5座



Key Plan
索引圖



Legend 圖例：

B.L. Boundary of the Development
發展項目的界線

Authorized Person for the Phase has certified that the elevations shown on these plans:

期數的認可人士證明本圖所顯示的立面：

- (1) are prepared on the basis of the approved building plans for the Phase as of 23 October 2020 and the approved phasing plans for the Phase as of 21 April 2020; and

以2020年10月23日的情況為準的期數的經批准的建築圖則及以2020年4月21日的情況為準的期數的經批准的期數圖則為基礎擬備；及

- (2) are in general accordance with the outward appearance of the Phase.

大致上與期數的外觀一致。