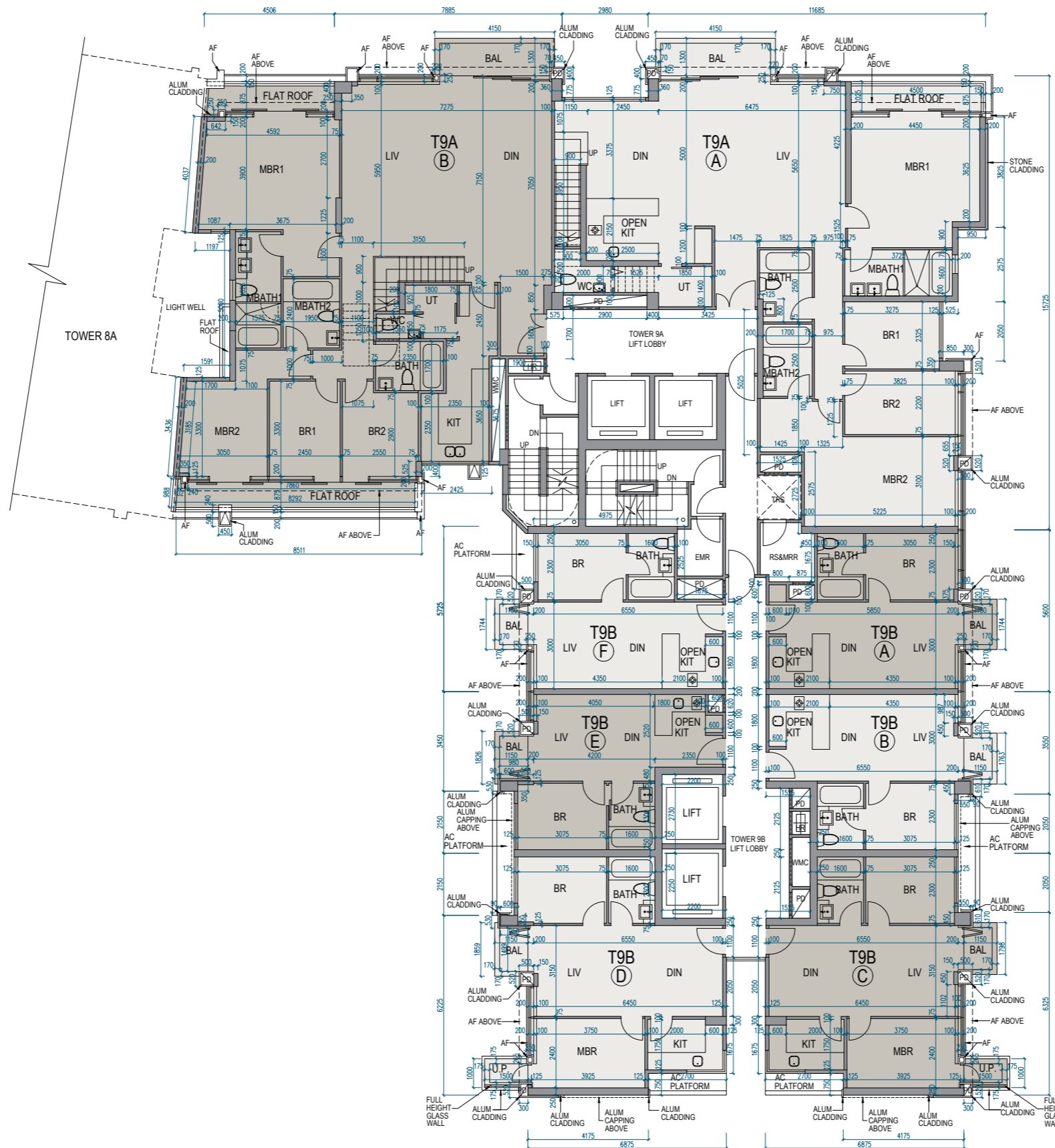


# 11 FLOOR PLANS OF RESIDENTIAL PROPERTIES IN THE DEVELOPMENT

## 發展項目的住宅物業的樓面平面圖

Tower 9A & 9B | 16/F  
第9A座及9B座 | 16樓



Scale 比例 0 5M (米)

# 11 FLOOR PLANS OF RESIDENTIAL PROPERTIES IN THE DEVELOPMENT 發展項目的住宅物業的樓面平面圖

## Tower 9A & 9B | 16/F 第9A座及9B座 | 16樓

	Tower 座數	Unit 單位		A	B	C	D	E	F
		Floor 樓層							
Floor-to-floor height of each residential property (mm) 每個住宅物業的層與層之間的高度 (毫米)	Tower 9A 第9A座	16/F 16樓	Not applicable 不適用						
	Tower 9B 第9B座		3500	3500	3500	3500	3500	3500	
The thickness of the floor slabs (excluding plaster) of each residential property (mm) 每個住宅物業的樓板 (不包括灰泥) 的厚度 (毫米)	Tower 9A 第9A座		150, 200	150, 200	Not applicable 不適用				
	Tower 9B 第9B座		150	150	150	150	150	150	

The internal areas of the residential properties on the upper floors will generally be slightly larger than those on the lower floors because of the reducing thickness of the structural walls on the upper floors.

因住宅物業的較高樓層的結構牆的厚度遞減，較高樓層的內部面積，一般比較低樓層的內部面積稍大。

### Notes:

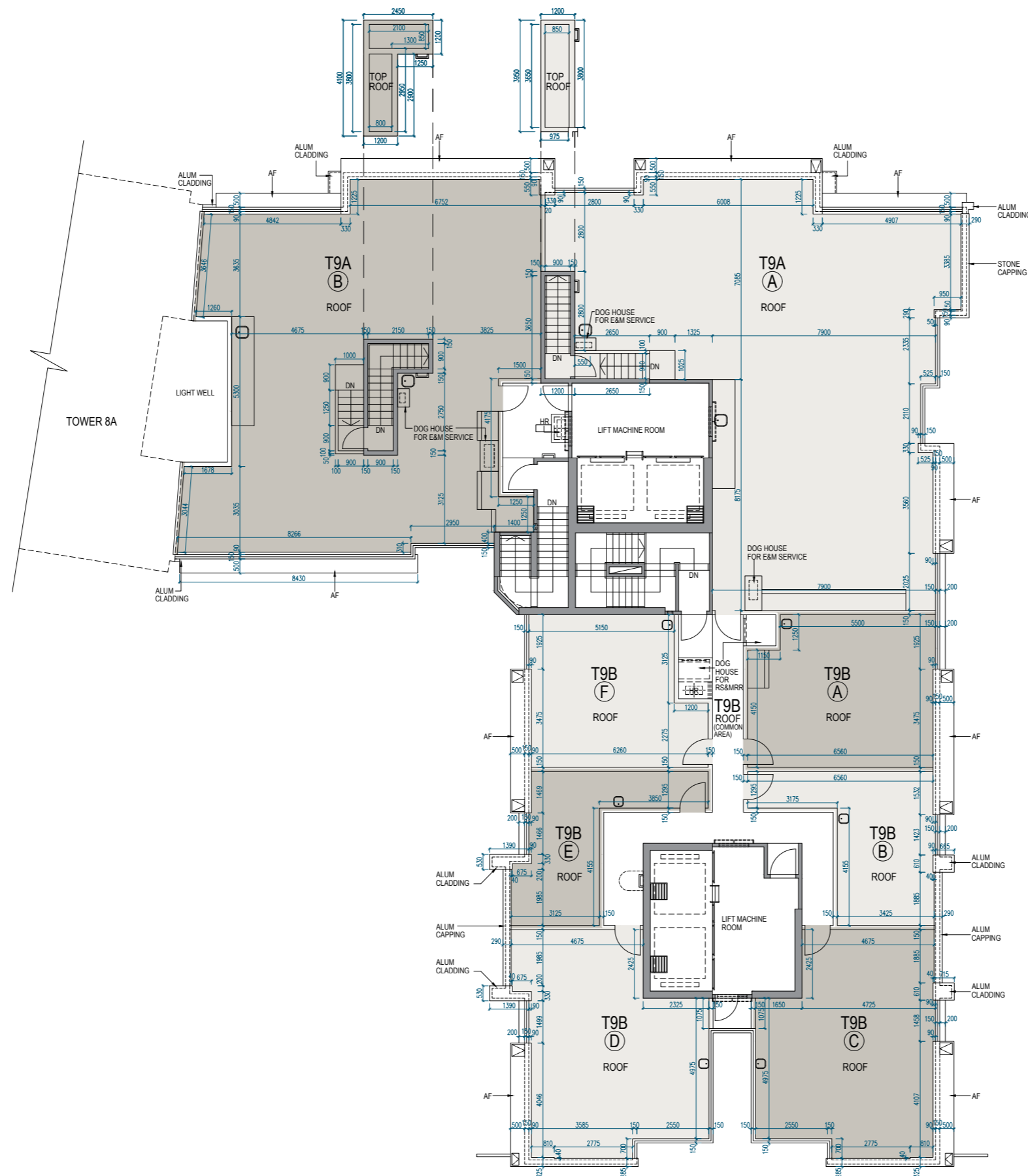
- The dimensions in the floor plans are all structural dimensions in millimetre.
- Please refer to page 23 to page 25 of this sales brochure for legend of the terms and abbreviations in studying the floor plans of residential properties in the Development.
- The floor-to-floor height refer to the height between the top surface of the structural slab of a floor and the top surface of the structural slab of its immediate upper floor of each residential property.

### 備註：

- 樓面平面圖之尺規所列數字為以毫米標示之建築結構尺寸。
- 請參閱本售樓說明書第23頁至第25頁之圖例以協助閱讀此部分的發展項目的住宅物業的樓面平面圖及其顯示之名稱和簡稱。
- 每個住宅物業的層與層之間的高度指該層之石屎地台面與上一層石屎地台之高度距離。

# 11 FLOOR PLANS OF RESIDENTIAL PROPERTIES IN THE DEVELOPMENT 發展項目的住宅物業的樓面平面圖

Tower 9A & 9B | Roof  
第9A座及9B座 | 天台



Scale 比例 0 5M (米)

# 11 FLOOR PLANS OF RESIDENTIAL PROPERTIES IN THE DEVELOPMENT

## 發展項目的住宅物業的樓面平面圖

### Tower 9A & 9B | Roof 第9A座及9B座 | 天台

	Tower 座數	Unit 單位	A	B	C	D	E	F
		Floor 樓層						
Floor-to-floor height of each residential property (mm) 每個住宅物業的層與層之間的高度 (毫米)	Tower 9A 第9A座	Roof 天台	Not applicable 不適用					
	Tower 9B 第9B座							
The thickness of the floor slabs (excluding plaster) of each residential property (mm) 每個住宅物業的樓板 (不包括灰泥) 的厚度 (毫米)	Tower 9A 第9A座							
	Tower 9B 第9B座							

The internal areas of the residential properties on the upper floors will generally be slightly larger than those on the lower floors because of the reducing thickness of the structural walls on the upper floors.

因住宅物業的較高樓層的結構牆的厚度遞減，較高樓層的內部面積，一般比較低樓層的內部面積稍大。

#### Notes:

- The dimensions in the floor plans are all structural dimensions in millimetre.
- Please refer to page 23 to page 25 of this sales brochure for legend of the terms and abbreviations in studying the floor plans of residential properties in the Development.
- The floor-to-floor height refer to the height between the top surface of the structural slab of a floor and the top surface of the structural slab of its immediate upper floor of each residential property.

#### 備註：

- 樓面平面圖之尺規所列數字為以毫米標示之建築結構尺寸。
- 請參閱本售樓說明書第23頁至第25頁之圖例以協助閱讀此部分的發展項目的住宅物業的樓面平面圖及其顯示之名稱和簡稱。
- 每個住宅物業的層與層之間的高度指該層之石屎地台面與上一層石屎地台之高度距離。