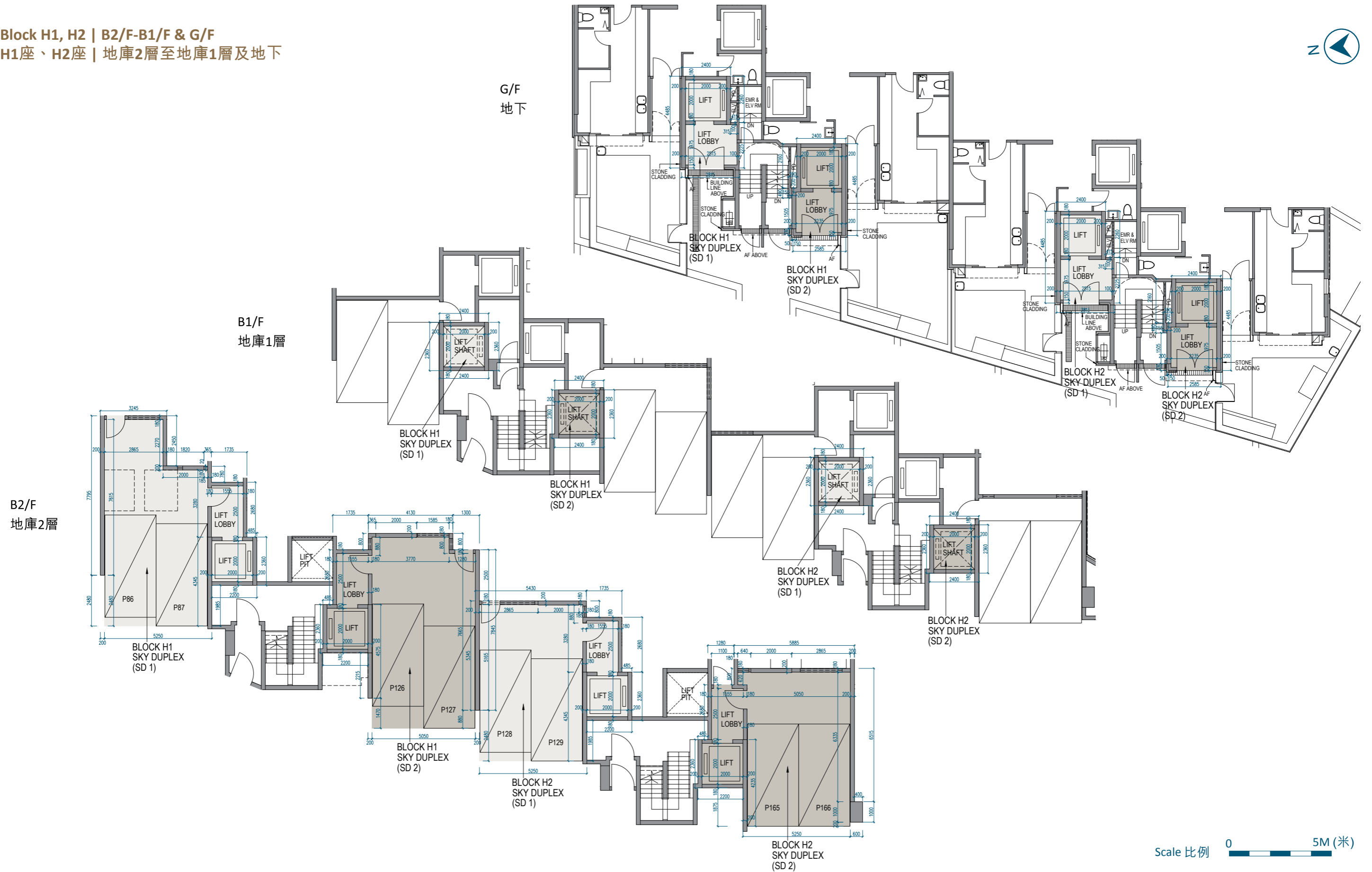


11 FLOOR PLANS OF RESIDENTIAL PROPERTIES IN THE DEVELOPMENT

發展項目的住宅物業的樓面平面圖

Block H1, H2 | B2/F-B1/F & G/F
 H1座、H2座 | 地庫2層至地庫1層及地下



11 FLOOR PLANS OF RESIDENTIAL PROPERTIES IN THE DEVELOPMENT

發展項目的住宅物業的樓面平面圖

Block H1, H2 | B2/F-B1/F & G/F H1座、H2座 | 地庫2層至地庫1層及地下

	Tower 座數	Unit 單位 Floor 樓層	Sky Duplex (SD 1)	Sky Duplex (SD 2)
Floor-to-floor height of each residential property (mm) 每個住宅物業的層與層之間的高度 (毫米)	Block H1 H1座	B2/F 地庫2層	3650	3650
	Block H2 H2座		3650	3650
The thickness of the floor slabs (excluding plaster) of each residential property (mm) 每個住宅物業的樓板 (不包括灰泥) 的厚度 (毫米)	Block H1 H1座		200	200
	Block H2 H2座		200	200
Floor-to-floor height of each residential property (mm) 每個住宅物業的層與層之間的高度 (毫米)	Block H1 H1座	B1/F 地庫1層	Not applicable 不適用	Not applicable 不適用
	Block H2 H2座			
The thickness of the floor slabs (excluding plaster) of each residential property (mm) 每個住宅物業的樓板 (不包括灰泥) 的厚度 (毫米)	Block H1 H1座			
	Block H2 H2座			
Floor-to-floor height of each residential property (mm) 每個住宅物業的層與層之間的高度 (毫米)	Block H1 H1座	G/F 地下	Not applicable 不適用	Not applicable 不適用
	Block H2 H2座			
The thickness of the floor slabs (excluding plaster) of each residential property (mm) 每個住宅物業的樓板 (不包括灰泥) 的厚度 (毫米)	Block H1 H1座			
	Block H2 H2座			

The internal areas of the residential properties on the upper floors will generally be slightly larger than those on the lower floors because of the reducing thickness of the structural walls on the upper floors.

Notes:

- The dimensions in the floor plans are all structural dimensions in millimetre.
- Please refer to page 23 to page 25 of this sales brochure for legend of the terms and abbreviations in studying the floor plans of residential properties in the Development.
- The floor-to-floor height refer to the height between the top surface of the structural slab of a floor and the top surface of the structural slab of its immediate upper floor of each residential property.

因住宅物業的較高樓層的結構牆的厚度遞減，較高樓層的內部面積，一般比較低樓層的內部面積稍大。

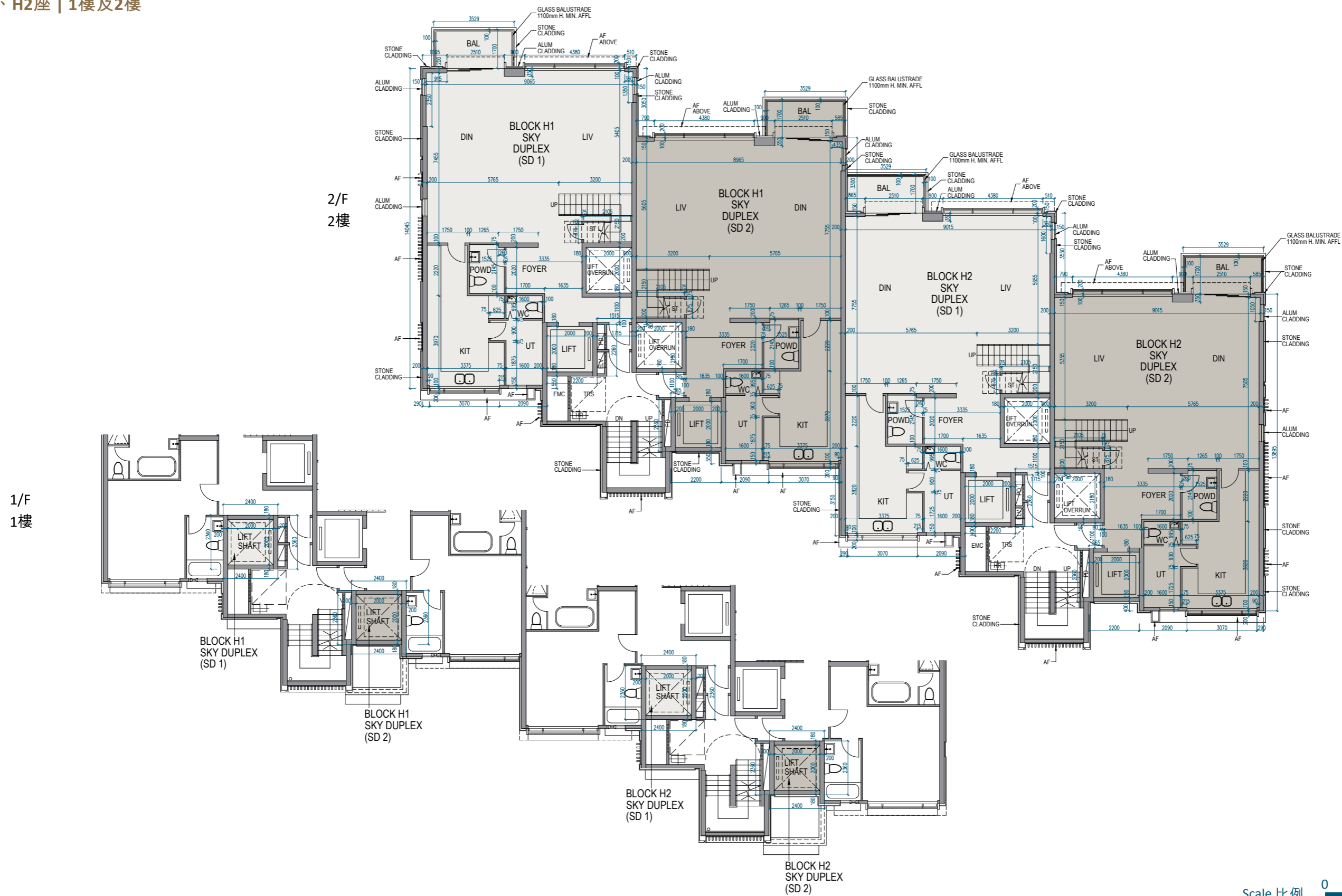
備註：

- 樓面平面圖之尺規所列數字為以毫米標示之建築結構尺寸。
- 請參閱本售樓說明書第23頁至第25頁之圖例以協助閱讀此部分的發展項目的住宅物業的樓面平面圖及其顯示之名稱和簡稱。
- 每個住宅物業的層與層之間的高度指該層之石屎地台面與上一層石屎地台之高度距離。

11 FLOOR PLANS OF RESIDENTIAL PROPERTIES IN THE DEVELOPMENT

發展項目的住宅物業的樓面平面圖

Block H1, H2 | 1/F & 2/F
H1座、H2座 | 1樓及2樓



Scale 比例 0 5M (米)

11 FLOOR PLANS OF RESIDENTIAL PROPERTIES IN THE DEVELOPMENT

發展項目的住宅物業的樓面平面圖

Block H1, H2 | 1/F & 2/F H1座、H2座 | 1樓及2樓

	Tower 座數	Unit 單位 Floor 樓層	Sky Duplex (SD 1)	Sky Duplex (SD 2)
Floor-to-floor height of each residential property (mm) 每個住宅物業的層與層之間的高度 (毫米)	Block H1 H1座	1/F 1樓	Not applicable 不適用	Not applicable 不適用
	Block H2 H2座			
The thickness of the floor slabs (excluding plaster) of each residential property (mm) 每個住宅物業的樓板 (不包括灰泥) 的厚度 (毫米)	Block H1 H1座	1/F 1樓	Not applicable 不適用	Not applicable 不適用
	Block H2 H2座			
Floor-to-floor height of each residential property (mm) 每個住宅物業的層與層之間的高度 (毫米)	Block H1 H1座	2/F 2樓	3350	3350
	Block H2 H2座		3350	3350
The thickness of the floor slabs (excluding plaster) of each residential property (mm) 每個住宅物業的樓板 (不包括灰泥) 的厚度 (毫米)	Block H1 H1座	2/F 2樓	150, 200	150, 200
	Block H2 H2座		150, 200	150, 200

The internal areas of the residential properties on the upper floors will generally be slightly larger than those on the lower floors because of the reducing thickness of the structural walls on the upper floors.

因住宅物業的較高樓層的結構牆的厚度遞減，較高樓層的內部面積，一般比較低樓層的內部面積稍大。

Notes:

- The dimensions in the floor plans are all structural dimensions in millimetre.
- Please refer to page 23 to page 25 of this sales brochure for legend of the terms and abbreviations in studying the floor plans of residential properties in the Development.
- The floor-to-floor height refer to the height between the top surface of the structural slab of a floor and the top surface of the structural slab of its immediate upper floor of each residential property.

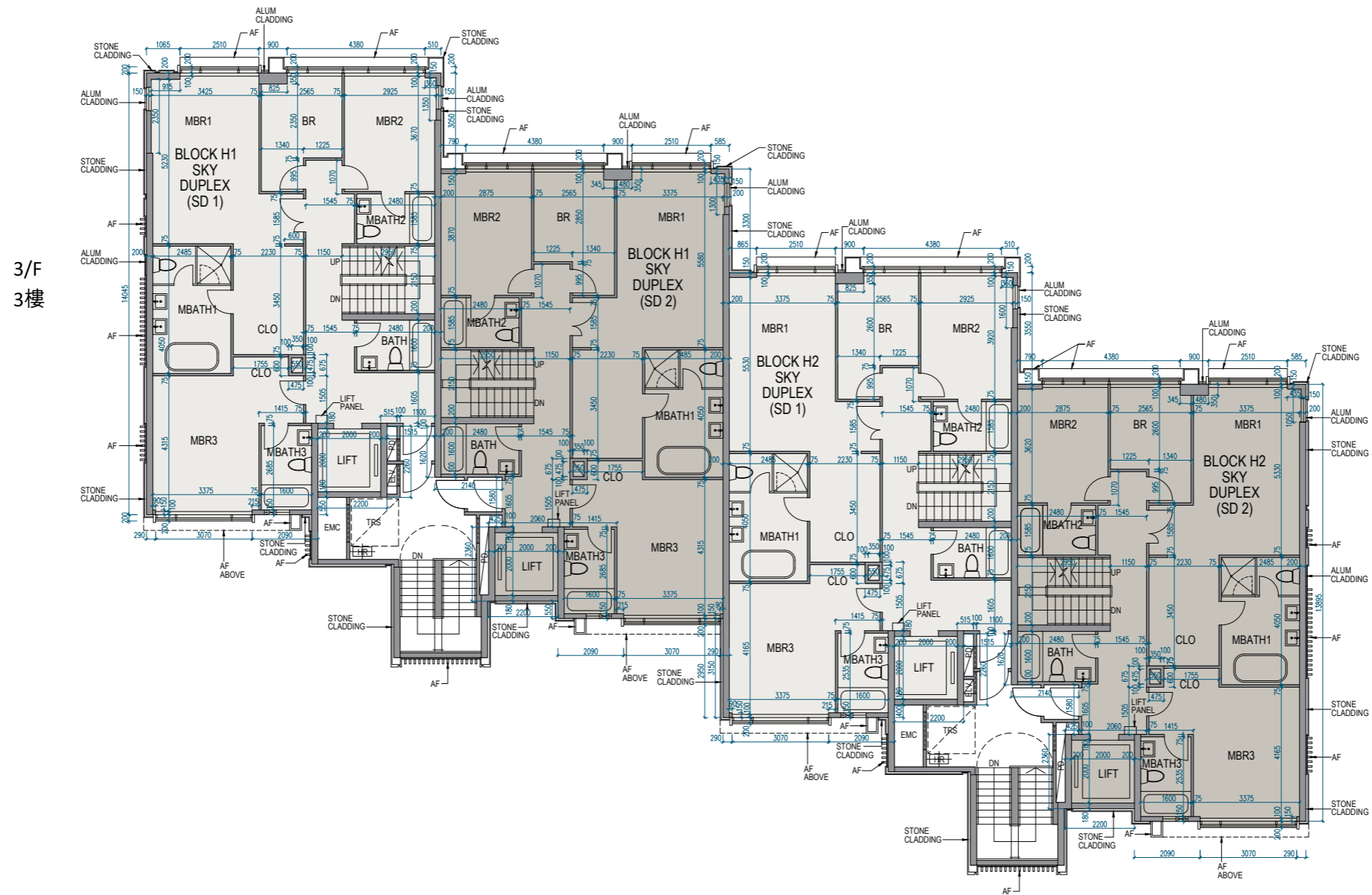
備註：

- 樓面平面圖之尺規所列數字為以毫米標示之建築結構尺寸。
- 請參閱本售樓說明書第23頁至第25頁之圖例以協助閱讀此部分的發展項目的住宅物業的樓面平面圖及其顯示之名稱和簡稱。
- 每個住宅物業的層與層之間的高度指該層之石屎地台面與上一層石屎地台之高度距離。

11 FLOOR PLANS OF RESIDENTIAL PROPERTIES IN THE DEVELOPMENT

發展項目的住宅物業的樓面平面圖

Block H1, H2 | 3/F
H1座、H2座 | 3樓



3/F
3樓

Scale 比例 0 5M (米)

11 FLOOR PLANS OF RESIDENTIAL PROPERTIES IN THE DEVELOPMENT

發展項目的住宅物業的樓面平面圖

Block H1, H2 | 3/F H1座、H2座 | 3樓

	Tower 座數	Unit 單位 Floor 樓層	Sky Duplex (SD 1)	Sky Duplex (SD 2)
Floor-to-floor height of each residential property (mm) 每個住宅物業的層與層之間的高度 (毫米)	Block H1 H1座	3/F 3樓	3150	3150
	Block H2 H2座		3150	3150
The thickness of the floor slabs (excluding plaster) of each residential property (mm) 每個住宅物業的樓板 (不包括灰泥) 的厚度 (毫米)	Block H1 H1座		150	150
	Block H2 H2座		150	150

The internal areas of the residential properties on the upper floors will generally be slightly larger than those on the lower floors because of the reducing thickness of the structural walls on the upper floors.

因住宅物業的較高樓層的結構牆的厚度遞減，較高樓層的內部面積，一般比較低樓層的內部面積稍大。

Notes:

- The dimensions in the floor plans are all structural dimensions in millimetre.
- Please refer to page 23 to page 25 of this sales brochure for legend of the terms and abbreviations in studying the floor plans of residential properties in the Development.
- The floor-to-floor height refer to the height between the top surface of the structural slab of a floor and the top surface of the structural slab of its immediate upper floor of each residential property.

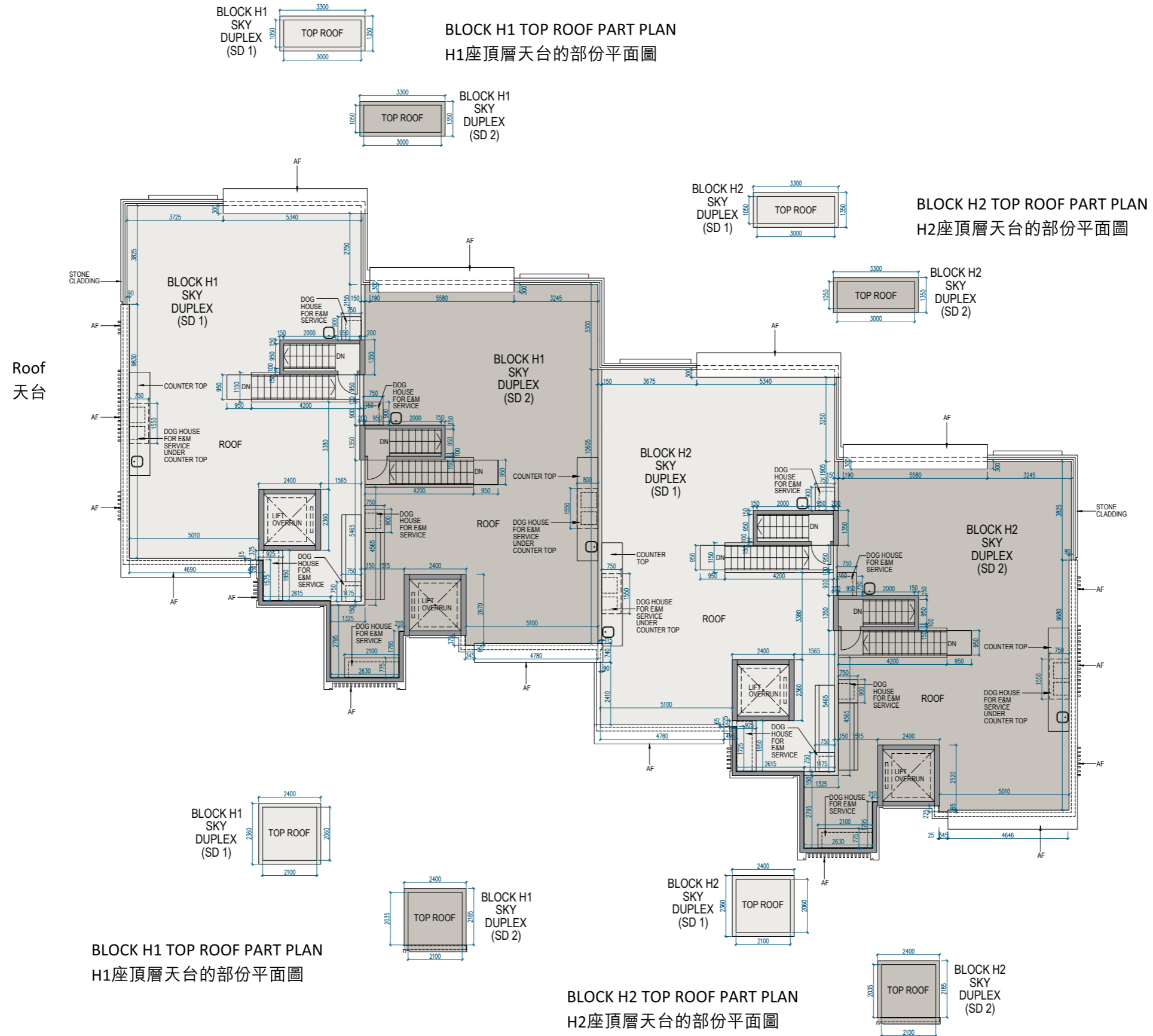
備註：

- 樓面平面圖之尺規所列數字為以毫米標示之建築結構尺寸。
- 請參閱本售樓說明書第23頁至第25頁之圖例以協助閱讀此部分的發展項目的住宅物業的樓面平面圖及其顯示之名稱和簡稱。
- 每個住宅物業的層與層之間的高度指該層之石屎地台面與上一層石屎地台之高度距離。

11 FLOOR PLANS OF RESIDENTIAL PROPERTIES IN THE DEVELOPMENT

發展項目的住宅物業的樓面平面圖

Block H1, H2 | Roof
H1座、H2座 | 天台



Scale 比例 0 5M (米)

11 FLOOR PLANS OF RESIDENTIAL PROPERTIES IN THE DEVELOPMENT 發展項目的住宅物業的樓面平面圖

Block H1, H2 | Roof H1座、H2座 | 天台

	Tower 座數	Unit 單位 Floor 樓層	Sky Duplex (SD 1)	Sky Duplex (SD 2)
Floor-to-floor height of each residential property (mm) 每個住宅物業的層與層之間的高度 (毫米)	Block H1 H1座	Roof 天台	Not applicable 不適用	
	Block H2 H2座			
The thickness of the floor slabs (excluding plaster) of each residential property (mm) 每個住宅物業的樓板 (不包括灰泥) 的厚度 (毫米)	Block H1 H1座			
	Block H2 H2座			

The internal areas of the residential properties on the upper floors will generally be slightly larger than those on the lower floors because of the reducing thickness of the structural walls on the upper floors.

因住宅物業的較高樓層的結構牆的厚度遞減，較高樓層的內部面積，一般比較低樓層的內部面積稍大。

Notes:

- The dimensions in the floor plans are all structural dimensions in millimetre.
- Please refer to page 23 to page 25 of this sales brochure for legend of the terms and abbreviations in studying the floor plans of residential properties in the Development.
- The floor-to-floor height refer to the height between the top surface of the structural slab of a floor and the top surface of the structural slab of its immediate upper floor of each residential property.

備註：

- 樓面平面圖之尺規所列數字為以毫米標示之建築結構尺寸。
- 請參閱本售樓說明書第23頁至第25頁之圖例以協助閱讀此部分的發展項目的住宅物業的樓面平面圖及其顯示之名稱和簡稱。
- 每個住宅物業的層與層之間的高度指該層之石屎地台面與上一層石屎地台之高度距離。