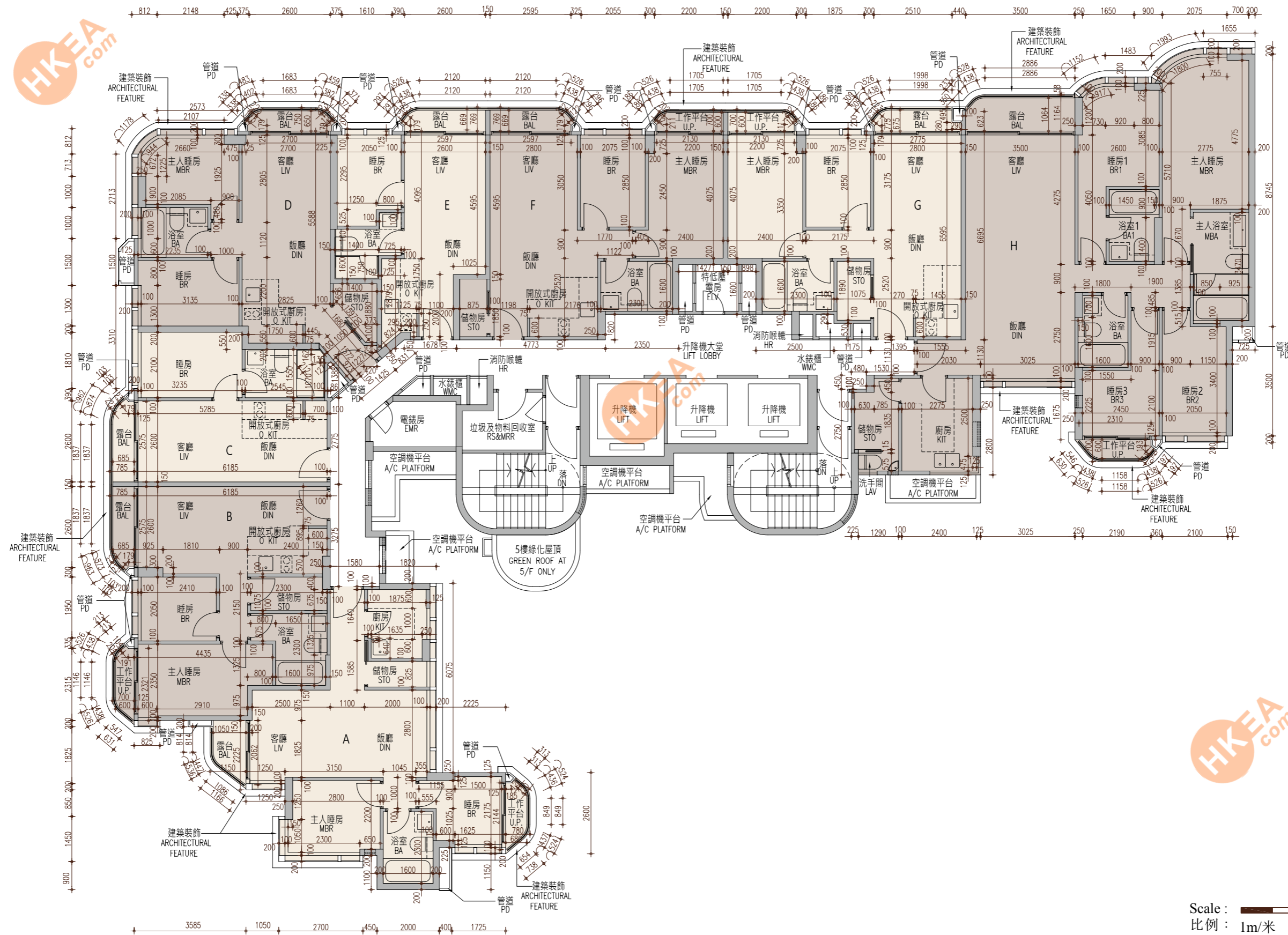


# FLOOR PLANS OF RESIDENTIAL PROPERTIES IN THE PHASE 期數的住宅物業的樓面平面圖

5/F-7/F Floor Plan  
5樓至7樓 樓面平面圖



Scale :   
比例 : 1m/米 5m/米

5/F-7/F Floor Plan  
5樓至7樓 樓面平面圖

	Flat 單位 Floor 樓層	A	B	C	D	E	F	G	H
The thickness of the floor slabs (excluding plaster) of each residential property (mm) 每個住宅物業的樓板（不包括灰泥）的厚度（毫米）	5/F-6/F 5樓至6樓	200, 150							
The floor-to-floor height of each residential property (mm) 每個住宅物業的層與層之間的高度（毫米）		3300, 3000, 2950	3300, 2900	3300, 2950				3300, 3000, 2950	3300, 3250, 3000, 2950, 2900, 2850
The thickness of the floor slabs (excluding plaster) of each residential property (mm) 每個住宅物業的樓板（不包括灰泥）的厚度（毫米）	7/F 7樓	200, 150				200	200, 150		
The floor-to-floor height of each residential property (mm) 每個住宅物業的層與層之間的高度（毫米）		3325, 3300, 3000, 2950	3300, 2900	3300, 2950	3300, 3275, 3250, 2900	3300, 2900	3300, 2950	3300, 3000, 2950	3300, 3250, 3000, 2950, 2900, 2850

The internal areas of the residential properties on the upper floors will generally be slightly larger than those on the lower floors because of the reducing thickness of the structural walls on the upper floors. (Note: This statement required under Section 10(2)(e) in Part I of Schedule 1 to the Residential Properties (First-hand Sales) Ordinance (Cap.621) is not applicable to the Phase.)

Please refer to page 21 of this sales brochure for the remarks and legends of the terms and abbreviations for the floor plans of residential properties.

Notes: 1. The dimensions in floor plans are all structural dimensions in millimetre.  
2. 4/F, 13/F and 14/F are omitted.

因住宅物業的較高樓層的結構牆的厚度遞減，較高樓層的內部面積，一般比較低樓層的內部面積稍大。  
(註：此根據《一手住宅物業銷售條例》（第621章）附表1第1部第10(2)(e)條所規定的陳述並不適用於期數。)

請參閱本售樓說明書第21頁為住宅物業樓面平面圖而設之備註及名詞及簡稱的圖例。

備註：1. 平面圖所列的數字為以毫米標示之建築結構尺寸。  
2. 不設4樓、13樓、14樓。