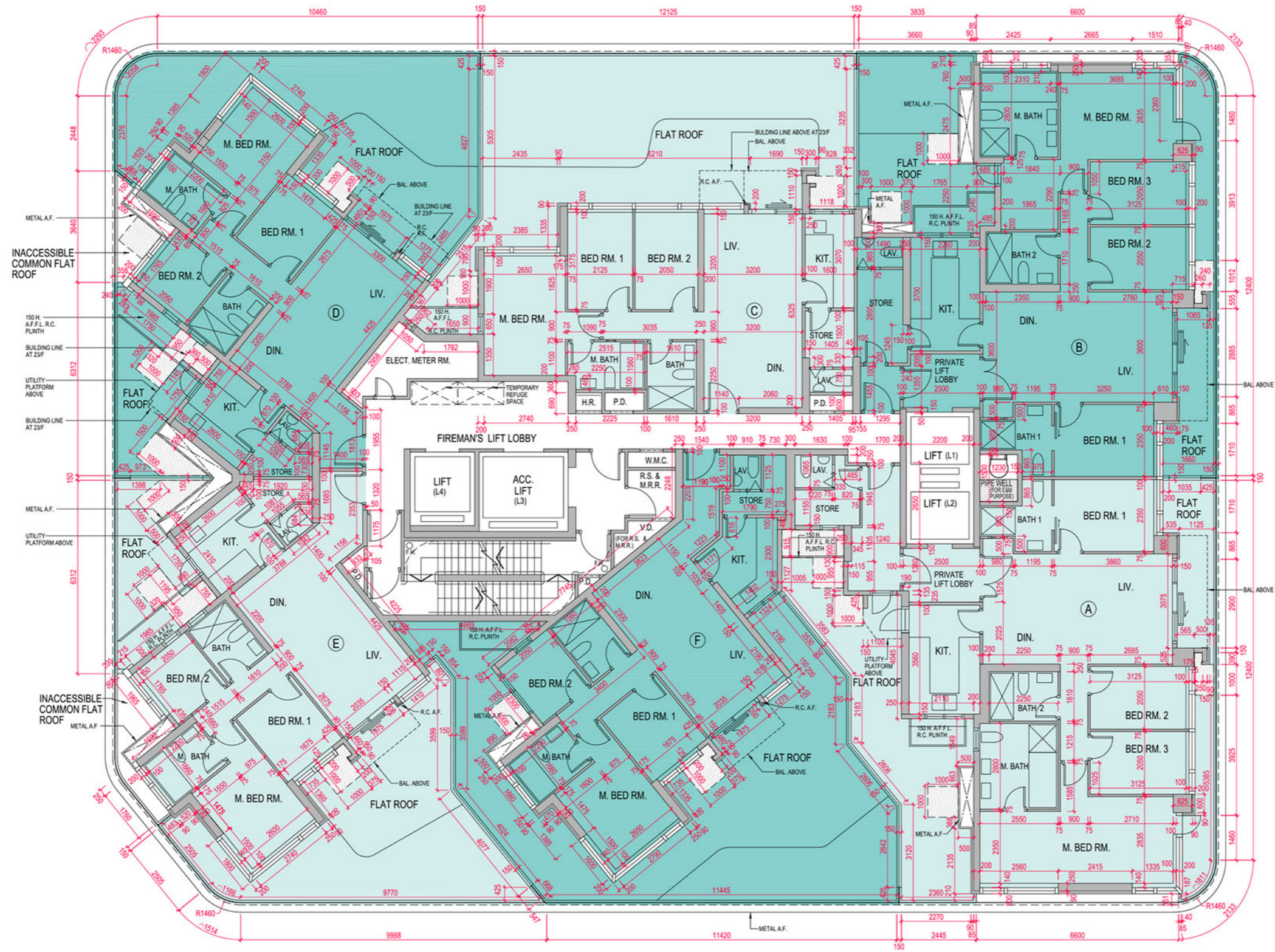
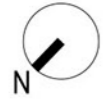


FLOOR PLANS OF RESIDENTIAL PROPERTIES IN THE DEVELOPMENT

發展項目的住宅物業的樓面平面圖

TOWER 1 - 2ND FLOOR PLAN
第1座 2樓樓面平面圖



LEGEND 圖例

 DESIGNATED COMMON AREA FOR MAINTENANCE BY GONDOLA.
指定供以吊船作維修用之公用範圍

Scale 0 5M (米)
比例

FLOOR PLANS OF RESIDENTIAL PROPERTIES IN THE DEVELOPMENT

發展項目的住宅物業的樓面平面圖

Each Residential Property 每個住宅物業	Tower Number 座數	Flat 單位 Floor 樓層	A	B	C	D	E	F
Floor-to-Floor Height (mm) 層與層之間的高度 (毫米)	Tower 1 第1座	2/F 2樓	2750, 3100	2750, 3100	2750, 3100	2750, 3100	2750, 3100	2750, 3100
Thickness of Slab (excluding plaster) (mm) 樓板 (不包括灰泥) 的厚度 (毫米)		2/F 2樓	150	150	150	150	150	150

The internal areas of the residential properties on the upper floors will generally be slightly larger than those on the lower floors because of the reducing thickness of the structural walls on the upper floors. (Note: This statement required under Section 10(2)(e) in Part 1 of Schedule 1 of the Residential Properties (First-hand Sales) Ordinance is not applicable to the Development.)

Remarks:

- (a) There are clerical errors in the labels showing the locations of Dining Room and Living Room in Flat C in the latest approved building plans. The errors have been rectified here on this floor plan.
- (b) References to “planter” in the latest approved building plans are clerical errors. The errors have been rectified here on this floor plan.

因住宅物業的較高樓層的結構牆的厚度遞減，較高樓層的內部面積，一般比較低樓層的內部面積稍大。(註：此根據《一手住宅物業銷售條例》附表1第一部第10(2)(e)條所規定的陳述並不適用於本發展項目。)

註：

- (a) 最新經批准的建築圖則中C單位之客廳和飯廳位置標籤有文書錯誤。該等錯誤在本樓面平面圖已經修正。
- (b) 最新經批准的建築圖則對“planter”之提述為文書錯誤。該等錯誤在本樓面平面圖已經修正。