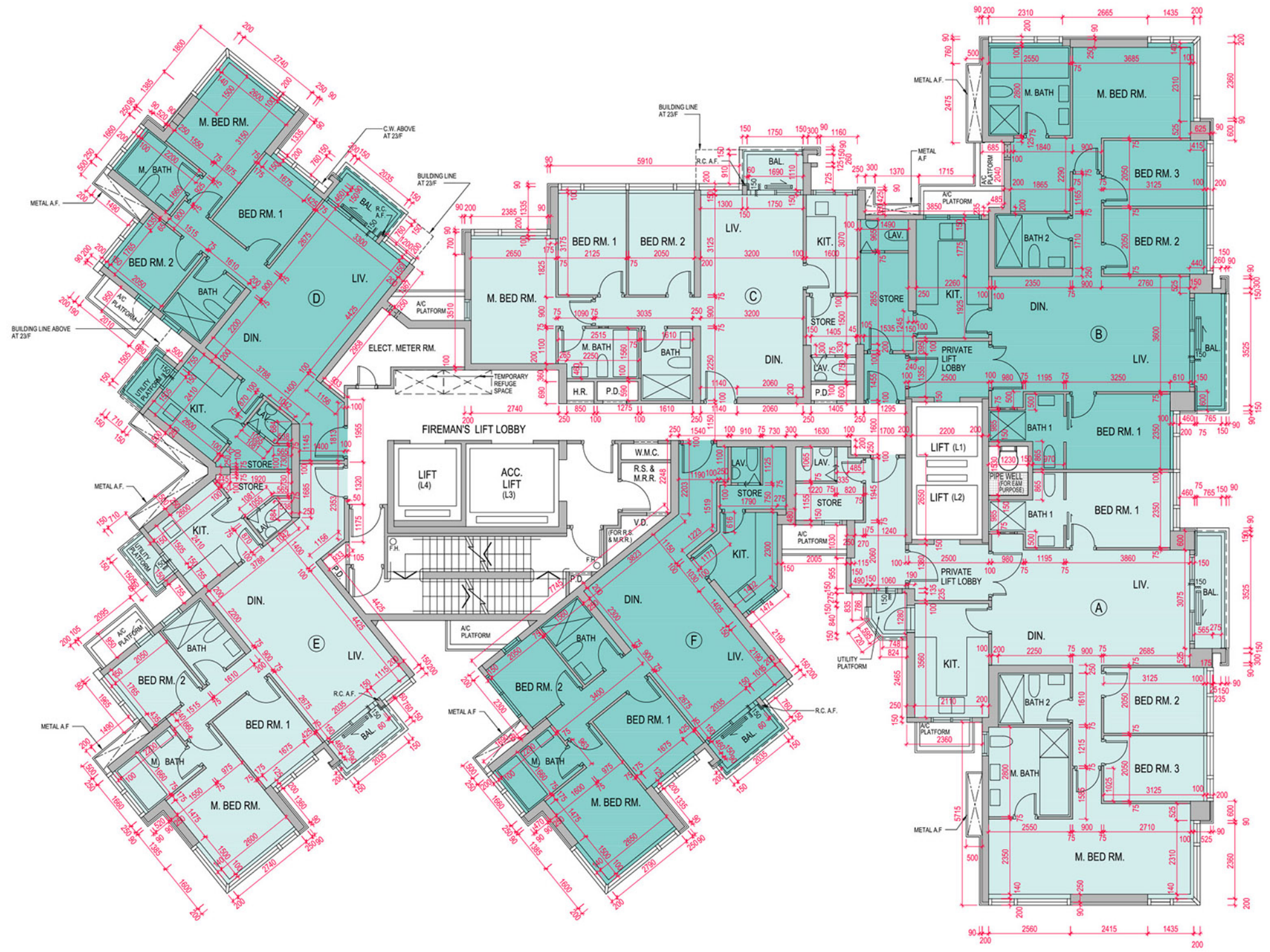


FLOOR PLANS OF RESIDENTIAL PROPERTIES IN THE DEVELOPMENT

發展項目的住宅物業的樓面平面圖

TOWER 1 - 3RD - 22ND FLOOR PLAN (4/F, 13/F & 14/F are omitted)
 第1座 3樓至22樓樓面平面圖(不設4樓、13樓及14樓)



Scale 0 5M (米)
 比例

FLOOR PLANS OF RESIDENTIAL PROPERTIES IN THE DEVELOPMENT

發展項目的住宅物業的樓面平面圖

Each Residential Property 每個住宅物業	Tower Number 座數	Flat 單位 Floor 樓層	A	B	C	D	E	F
Floor-to-Floor Height (mm) 層與層之間的高度 (毫米)	Tower 1 第1座	3-22/F 3RD-22ND (4/F, 13/F & 14/F are omitted) 3樓至22樓 (不設4樓、13樓及14樓)	3100	3100	2750*, 3100, 3450*	3100	3100	3100
Thickness of Slab (excluding plaster) (mm) 樓板 (不包括灰泥) 的厚度 (毫米)		3-22/F 3RD-22ND (4/F, 13/F & 14/F are omitted) 3樓至22樓 (不設4樓、13樓及14樓)	150	150	150	150	150	150

The internal areas of the residential properties on the upper floors will generally be slightly larger than those on the lower floors because of the reducing thickness of the structural walls on the upper floors. (Note: This statement required under Section 10(2)(e) in Part 1 of Schedule 1 of the Residential Properties (First-hand Sales) Ordinance is not applicable to the Development.)

* Only applicable to 22/F

Remark:

There are clerical errors in the labels showing the locations of Dining Room and Living Room in Flat C in the latest approved building plans. The errors have been rectified here on this floor plan.

因住宅物業的較高樓層的結構牆的厚度遞減，較高樓層的內部面積，一般比較低樓層的內部面積稍大。(註：此根據《一手住宅物業銷售條例》附表1第一部第10(2)(e)條所規定的陳述並不適用於本發展項目。)

* 只適用於22樓

註：

最新經批准的建築圖則中C單位之客廳和飯廳位置標籤有文書錯誤。該等錯誤在本樓面平面圖已經修正。