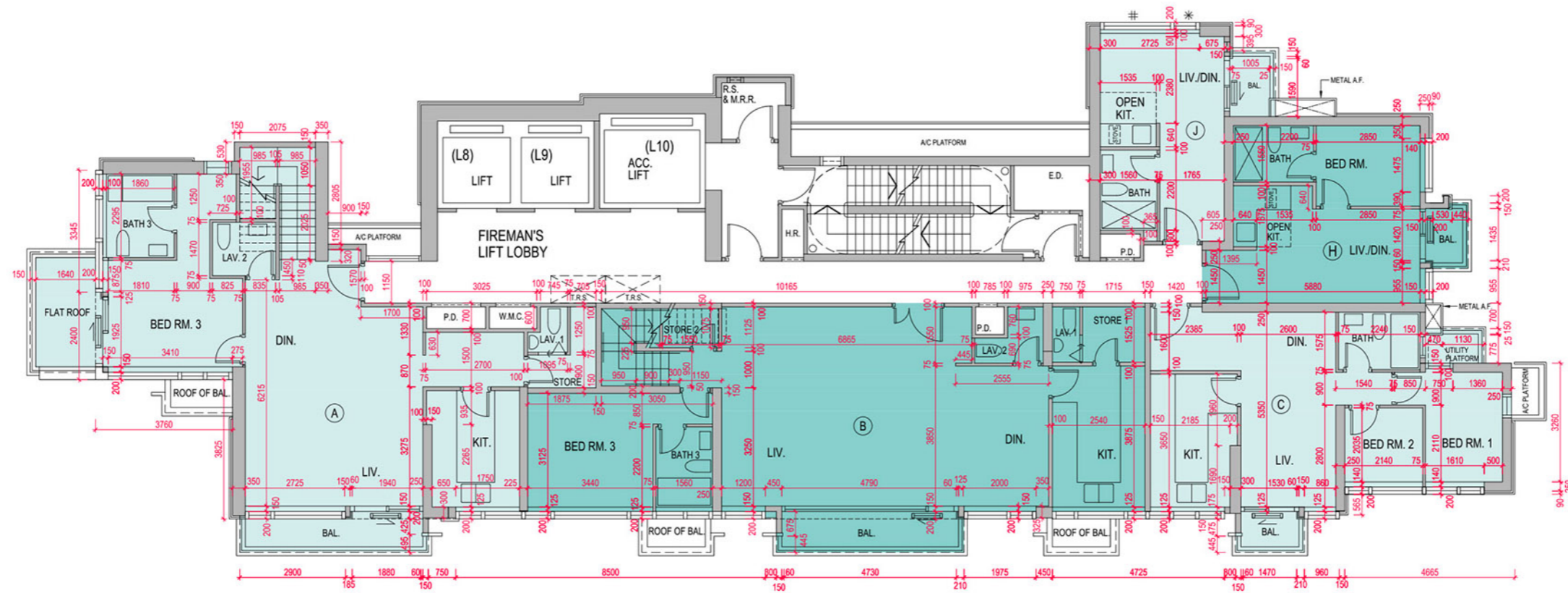
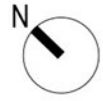


FLOOR PLANS OF RESIDENTIAL PROPERTIES IN THE DEVELOPMENT

發展項目的住宅物業的樓面平面圖

TOWER 3 - 30TH FLOOR PLAN
第3座 30樓樓面平面圖



LEGEND 圖例

- * : MAINTENANCE WINDOW 維修窗
- # : FIXED GLAZING 固定玻璃

Scale 0 5M (米)
比例

FLOOR PLANS OF RESIDENTIAL PROPERTIES IN THE DEVELOPMENT

發展項目的住宅物業的樓面平面圖

Each Residential Property 每個住宅物業	Tower Number 座數	Flat 單位 Floor 樓層	A	B	C	D	E	F	G	H	J
Floor-to-Floor Height (mm) 層與層之間的高度 (毫米)	Tower 3 第3座	30/F 30樓	3150, 3500	3150, 3500	3100, 3500	/	/	/	/	3100, 3500	3100, 3500
Thickness of Slab (excluding plaster) (mm) 樓板 (不包括灰泥) 的厚度 (毫米)		30/F 30樓	150	150	150	/	/	/	/	150	150

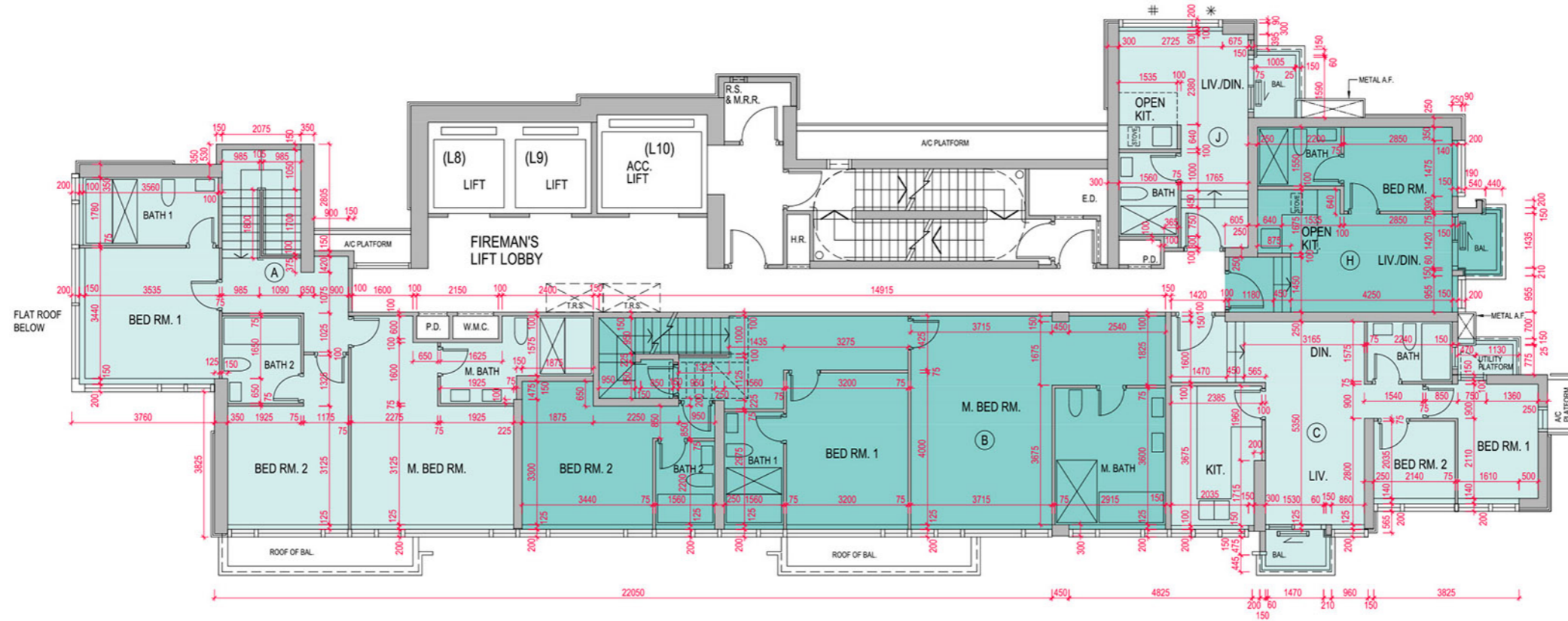
The internal areas of the residential properties on the upper floors will generally be slightly larger than those on the lower floors because of the reducing thickness of the structural walls on the upper floors. (Note: This statement required under Section 10(2)(e) in Part 1 of Schedule 1 of the Residential Properties (First-hand Sales) Ordinance is not applicable to the Development.)

因住宅物業的較高樓層的結構牆的厚度遞減，較高樓層的內部面積，一般比較低樓層的內部面積稍大。(註：此根據《一手住宅物業銷售條例》附表1第一部第10(2)(e)條所規定的陳述並不適用於本發展項目。)

FLOOR PLANS OF RESIDENTIAL PROPERTIES IN THE DEVELOPMENT

發展項目的住宅物業的樓面平面圖

TOWER 3 - 31ST FLOOR PLAN
第3座 31樓樓面平面圖



LEGEND 圖例

- * : MAINTENANCE WINDOW 維修窗
- # : FIXED GLAZING 固定玻璃

Scale 0 5M (米)
比例

FLOOR PLANS OF RESIDENTIAL PROPERTIES IN THE DEVELOPMENT

發展項目的住宅物業的樓面平面圖

Each Residential Property 每個住宅物業	Tower Number 座數	Flat 單位 Floor 樓層	A	B	C	D	E	F	G	H	J
Floor-to-Floor Height (mm) 層與層之間的高度 (毫米)	Tower 3 第3座	31/F 31樓	3150, 3500	3150, 3500	3500	/	/	/	/	3500	3500
Thickness of Slab (excluding plaster) (mm) 樓板 (不包括灰泥) 的厚度 (毫米)		31/F 31樓	150	150	150	/	/	/	/	150	150

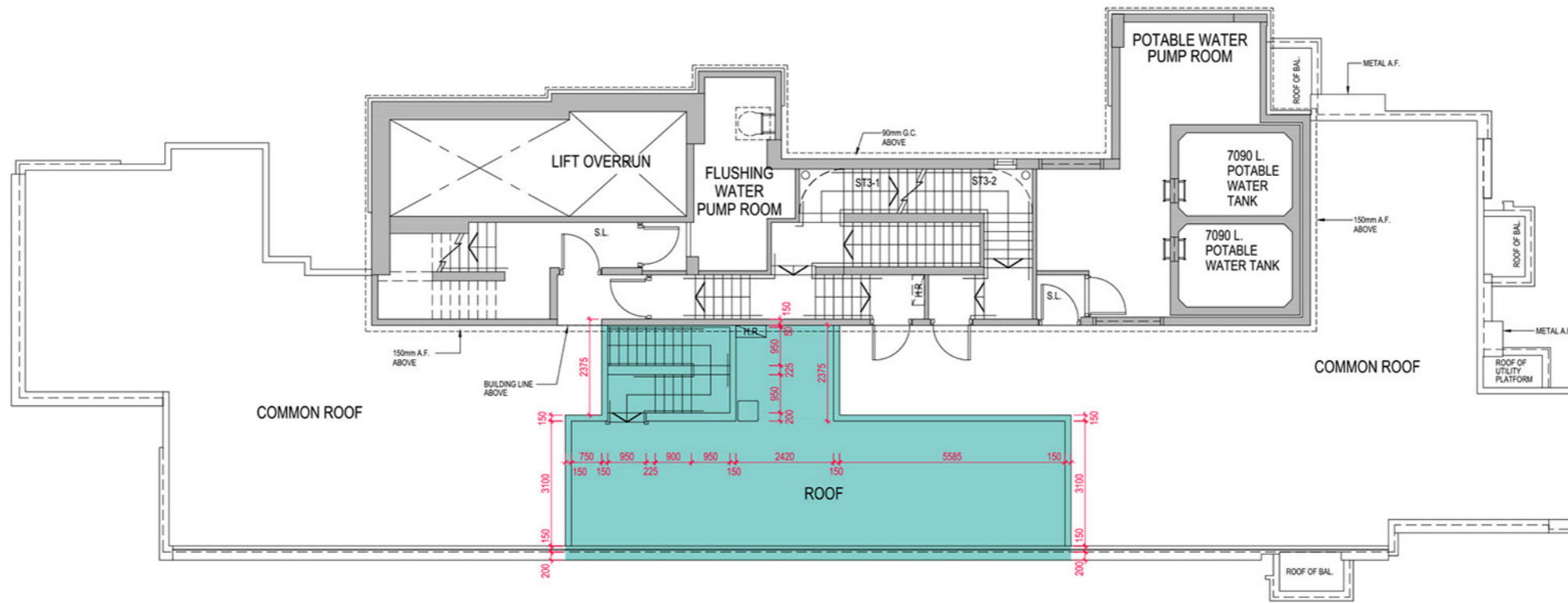
The internal areas of the residential properties on the upper floors will generally be slightly larger than those on the lower floors because of the reducing thickness of the structural walls on the upper floors. (Note: This statement required under Section 10(2)(e) in Part 1 of Schedule 1 of the Residential Properties (First-hand Sales) Ordinance is not applicable to the Development.)

因住宅物業的較高樓層的結構牆的厚度遞減，較高樓層的內部面積，一般比較低樓層的內部面積稍大。(註：此根據《一手住宅物業銷售條例》附表1第一部第10(2)(e)條所規定的陳述並不適用於本發展項目。)

FLOOR PLANS OF RESIDENTIAL PROPERTIES IN THE DEVELOPMENT

發展項目的住宅物業的樓面平面圖

TOWER 3 - ROOF FLOOR PLAN
第3座 天台樓面平面圖



Scale 0 5M (米)
比例

FLOOR PLANS OF RESIDENTIAL PROPERTIES IN THE DEVELOPMENT

發展項目的住宅物業的樓面平面圖

Each Residential Property 每個住宅物業	Tower Number 座數	Flat 單位 Floor 樓層	A	B	C	D	E	F	G	H	J
Floor-to-Floor Height (mm) 層與層之間的高度 (毫米)	Tower 3 第3座	Roof 天台	Not applicable 不適用								
Thickness of Slab (excluding plaster) (mm) 樓板 (不包括灰泥) 的厚度 (毫米)		Roof 天台									

The internal areas of the residential properties on the upper floors will generally be slightly larger than those on the lower floors because of the reducing thickness of the structural walls on the upper floors. (Note: This statement required under Section 10(2)(e) in Part 1 of Schedule 1 of the Residential Properties (First-hand Sales) Ordinance is not applicable to the Development.)

因住宅物業的較高樓層的結構牆的厚度遞減，較高樓層的內部面積，一般比較低樓層的內部面積稍大。(註：此根據《一手住宅物業銷售條例》附表1第一部第10(2)(e)條所規定的陳述並不適用於本發展項目。)