
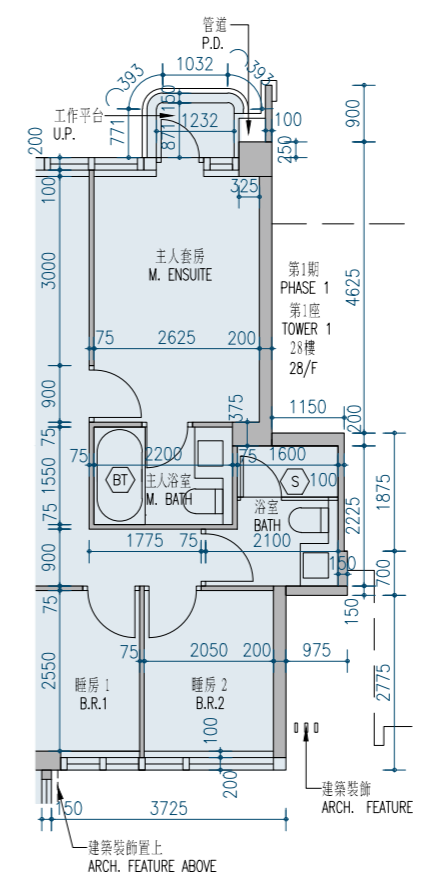
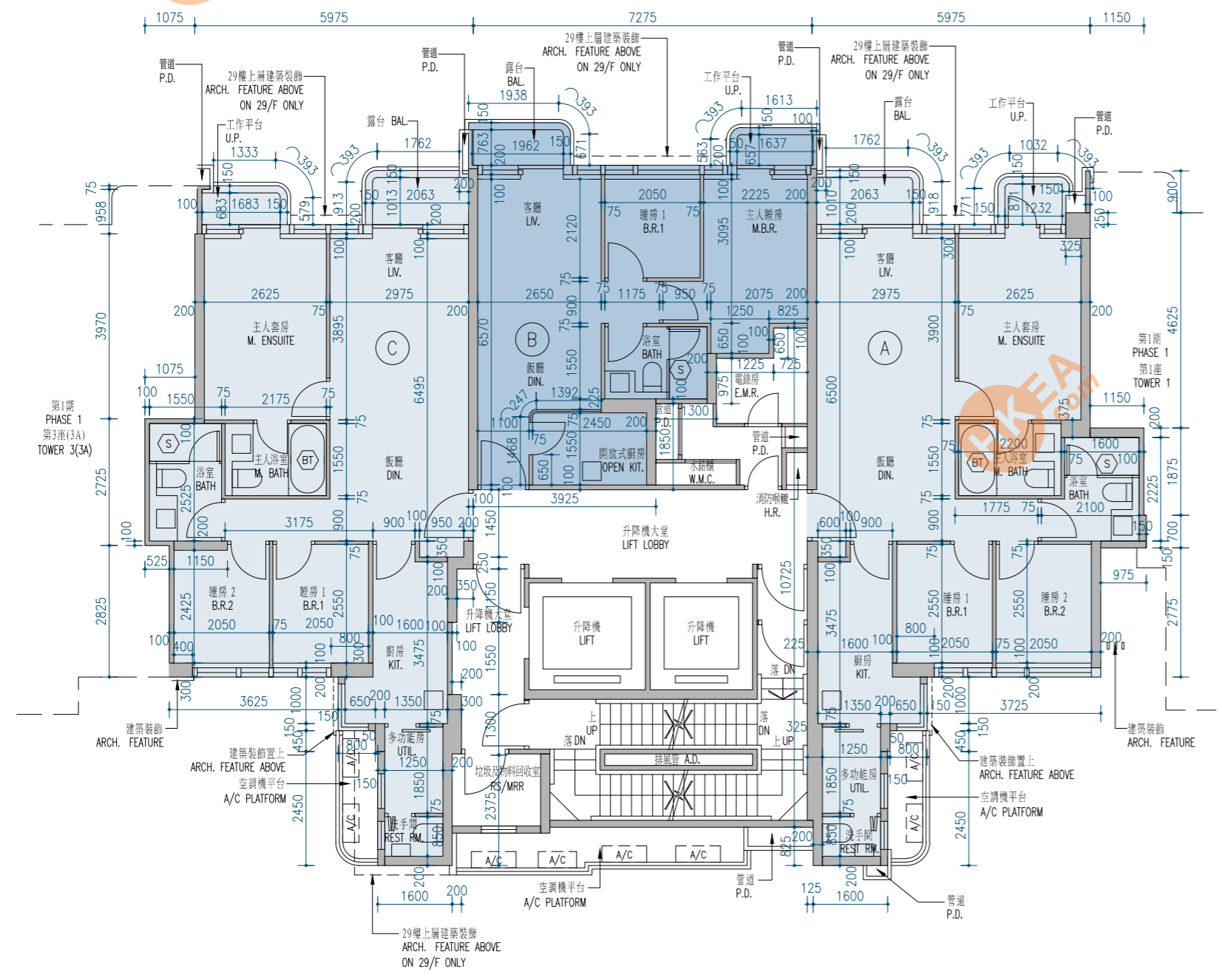
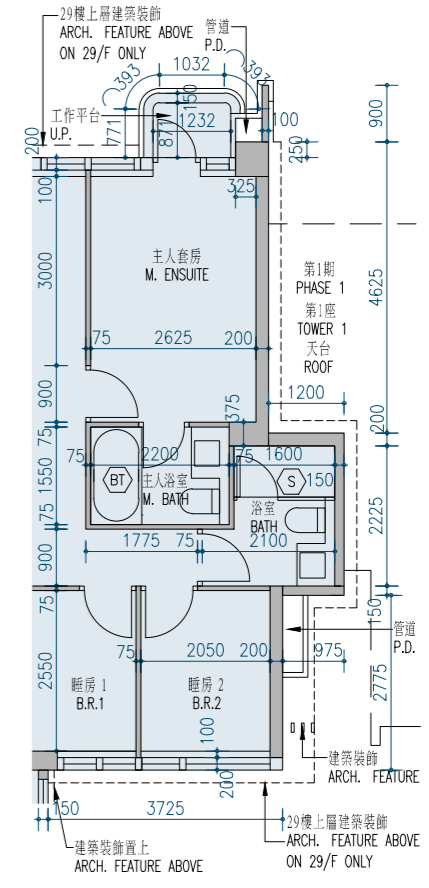


### Phase 1 Tower 2 27/F-29/F Floor Plan 第1期 第2座27樓至29樓樓面平面圖

Scale:  5M (米)  
比例: 0M/米



28/F Unit A Part Plan  
28樓A單位之部分平面圖



29/F Unit A Part Plan  
29樓A單位之部分平面圖



	Tower 座數	Floor 樓層	Units 單位		
			A	B	C
The thickness of the floor slabs (excluding plaster) of each residential property (mm) 每個住宅物業的樓板(不包括灰泥)的厚度(毫米)	Phase 1 Tower 2 第1期 第2座	27/F - 28/F 27樓至28樓	150, 300	150, 300	150, 300
The floor-to-floor height (i.e. the height between the top surface of the structural slab of a floor and the top surface of the structural slab of its immediate upper floor) of each residential property (mm) 每個住宅物業的層與層之間的高度(指該樓層之石屎地台面與上一層石屎地台面之高度距離)(毫米)			2900, 2950, 3250	2950, 3250	2800, 2850, 2900, 2950, 3250
The thickness of the floor slabs (excluding plaster) of each residential property (mm) 每個住宅物業的樓板(不包括灰泥)的厚度(毫米)		29/F 29樓	150, 200, 300, 400	150, 200, 300, 400	150, 200, 300, 400
The floor-to-floor height (i.e. the height between the top surface of the structural slab of a floor and the top surface of the structural slab of its immediate upper floor) of each residential property (mm) 每個住宅物業的層與層之間的高度(指該樓層之石屎地台面與上一層石屎地台面之高度距離)(毫米)			3200, 3300, 3500	3200, 3300, 3500	3000, 3100, 3150, 3200, 3250, 3300, 3500

The internal areas of the residential properties on the upper floors will generally be slightly larger than those on the lower floors because of the reducing thickness of the structural walls on the upper floors. (Note: This statement required in Section 10(2)(e) in Part 1 of Schedule 1 of the Residential Properties (First-hand Sales) Ordinance (Cap.621) is not applicable to the Phase).

Notes:

- The dimensions in the floor plans are all structural dimensions in millimetre.
- Please refer to page 27 of this sales brochure for legend of the terms and abbreviations in studying the floor plans.

因住宅物業的較高樓層的結構牆的厚度遞減，較高樓層的內部面積，一般比較低樓層的內部面積稍大。(註：此根據《一手住宅物業銷售條例》(第621章)附表1第1部第10(2)(e)條所規定的陳述並不適用於期數)

附註：

- 樓面平面圖之尺規所列數字為以毫米標示之建築結構尺寸。
- 請參閱本售樓說明書第27頁之圖例以協助閱讀樓面平面圖之名稱和簡稱。