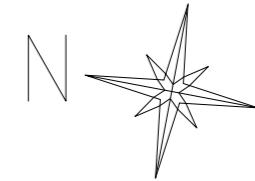
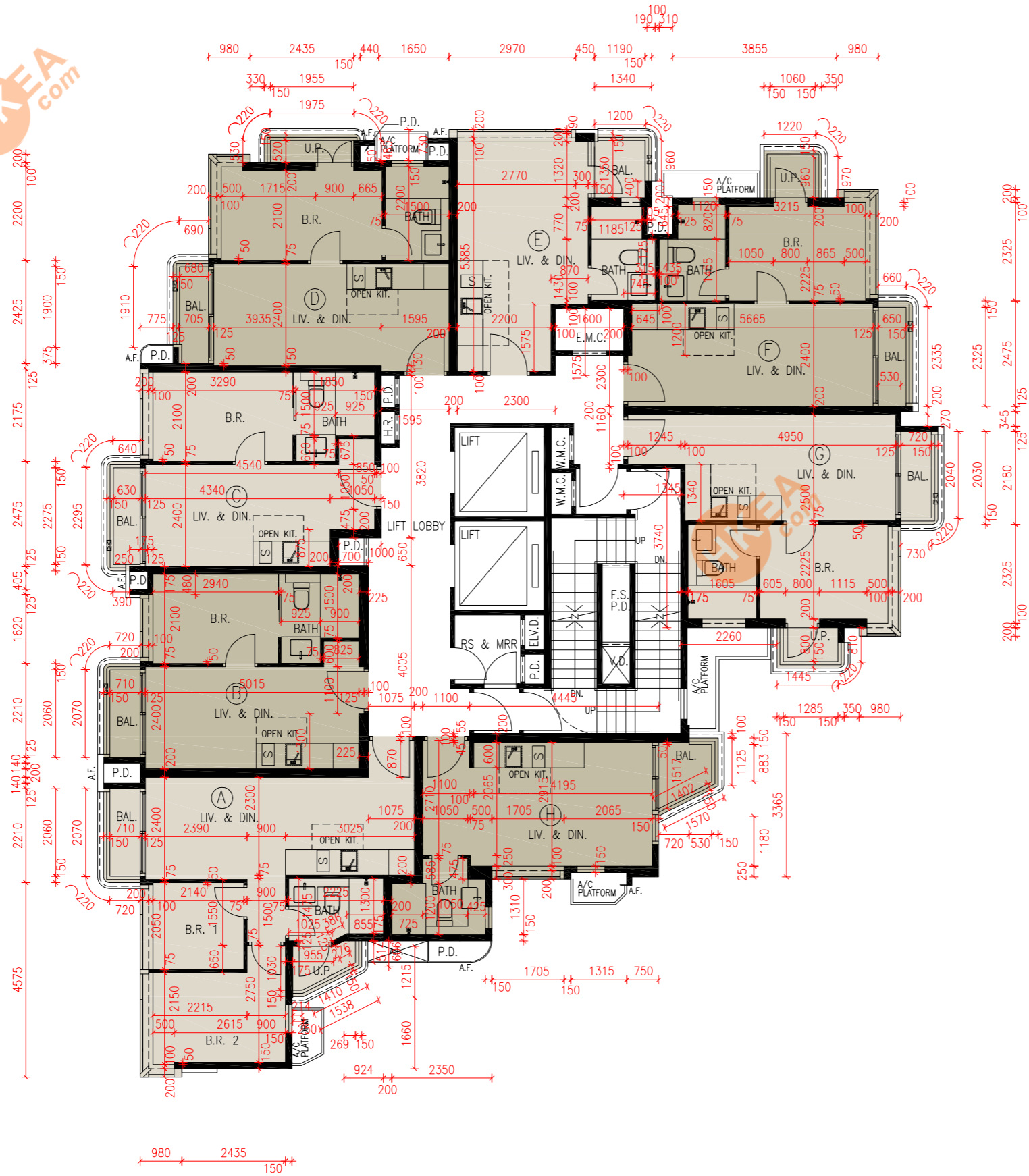


# FLOOR PLANS OF RESIDENTIAL PROPERTIES IN THE DEVELOPMENT

## 發展項目的住宅物業的樓面平面圖

5/F - 11/F FLOOR PLAN

5樓至11樓樓面平面圖



SCALE/ 比例: 0 1 2 5m (米)

# FLOOR PLANS OF RESIDENTIAL PROPERTIES IN THE DEVELOPMENT

## 發展項目的住宅物業的樓面平面圖

5/F – 11/F 5樓至11樓

Each Residential Property 每個住宅物業	Floor 樓層	Flat 單位							
		A	B	C	D	E	F	G	H
The thickness of the floor slabs (excluding plaster) of each residential property (mm) 每個住宅物業的樓板（不包括灰泥） 的厚度（毫米）	5/F – 10/F 5樓至10樓	150, 200, 225	150, 175	150, 175	150, 175	150, 175, 225	150, 175	150, 175, 225	150, 175
	11/F 11樓	150, 200, 225	150, 175	150, 175	150, 175	150, 175, 225	150, 175	150, 175, 225	150, 175
The floor-to-floor height of each residential property (mm) 每個住宅物業的層與層之間的高度 （毫米）	5/F – 10/F 5樓至10樓	2975, 3075, 3225, 3325	2975, 3075, 3225, 3325	2975, 3075, 3225, 3325	2975, 3075, 3225, 3325	2975, 3075, 3225, 3325	2975, 3075, 3225, 3325	2975, 3225, 3325	2975, 3225, 3325
	11/F 11樓	2975, 3075, 3225, 3325	2975, 3075, 3225, 3325	2975, 3075, 3225, 3325	2975, 3075, 3225, 3325	2975, 3075, 3225, 3325	3075, 3325	2975, 3225, 3325	2975, 3225, 3325

The internal areas of the residential properties on the upper floors will generally be slightly larger than those on the lower floors because of the reducing thickness of the structural walls on the upper floors. This situation and section 10(2)(e) of Part 1 of Schedule 1 to the Residential Properties (First-hand Sales) Ordinance is not applicable for this Development.

Notes:

1. The dimensions of floor plans are all structural dimensions in millimetre.
2. Please refer to Page AL01 of this Sales Brochure for legend of the terms and abbreviations shown in and remarks applicable to the floor plan.

因住宅物業的較高樓層的結構牆的厚度遞減，較高樓層的內部面積，一般比較低樓層的內部面積稍大。此情況及《一手住宅物業銷售條例》附表1第1部第10(2)(e)條不適用於此發展項目。

備註:

1. 樓面平面圖所列之尺寸數字為以毫米標示的建築結構尺寸。
2. 有關樓面平面圖中顯示之名詞及簡稱之圖例及通用之備註請參閱本售樓說明書第 AL01 頁。

