

11

FLOOR PLANS OF RESIDENTIAL PROPERTIES IN THE PHASE 期數的住宅物業的樓面平面圖

TOWER 1 (1A) & (1B) - 23/F - 40/F (24/F & 34/F OMITTED)

第1座(1A)及(1B) 23樓至40樓
(不設24樓及34樓)

Note 1: This floor plan of Unit D of Tower 1 (1A) is applicable to 23/F 37/F only.

Note 2: This floor plan of Unit B and Unit C (Duplex Units) of Tower 1 (1A) is only applicable to 23/F (lower duplex). For floor plans of Units B and Units C (Duplex Units) on 25/F (upper duplex), 26/F & 27/F, 28/F & 29/F, 30/F & 31/F, 32/F & 33/F, 35/F & 36/F, 37/F & 38/F and 39/F & 40/F of Tower 1 (1A), please refer to page 36 of this sales brochure.

註一：此第1座(1A)D單位之樓面平面圖只適用於23樓至37樓。

註二：此第1座(1A)B單位及C單位(複式單位)之樓面平面圖只適用於23樓(複式單位下層)。就第1座(1A)25樓(複式單位上層)、26樓及27樓、28樓及29樓、30樓及31樓、32樓及33樓、35樓及36樓、37樓及38樓、39樓及40樓B單位及C單位(複式單位)之樓面平面圖，請參閱本售樓說明書第36頁。

LEGEND 圖例

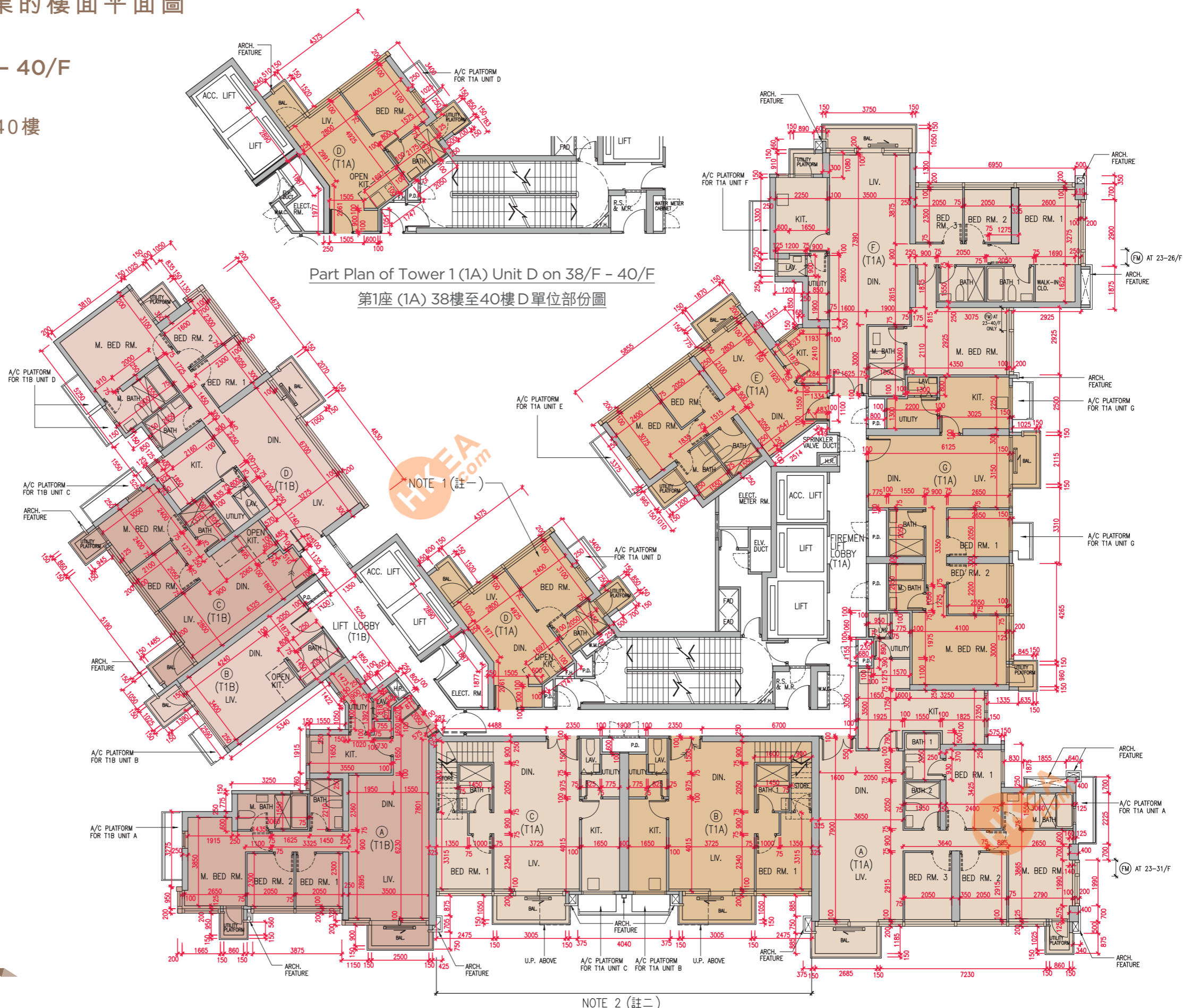
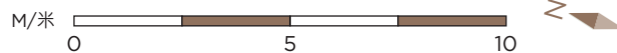


TOWER 1 (1A) 第1座(1A)



TOWER 1 (1B) 第1座(1B)

Scale 比例：



	Tower 座數	Floor 樓層	Unit 單位							
			A	B	C	D	E	F	G	
The thickness of the floor slabs (excluding plaster) of each residential property (mm) 每個住宅物業的樓板(不包括灰泥)的厚度(毫米)	Tower 1 (1A) 第1座(1A)	23/F - 36/F 23樓至36樓	150, 175, 200				150, 200	150, 175, 200	150, 175, 200	150, 175
The floor-to-floor height (refers to height between the top surface of the structural slab of a floor and the top surface of the structural slab of its immediate upper floor) of each residential property (mm) 每個住宅物業的層與層之間的高度(指該樓層之石屎地台面與上一層石屎地台面之高度距離)(毫米)			3150				3150	3150	3150	
The thickness of the floor slabs (excluding plaster) of each residential property (mm) 每個住宅物業的樓板(不包括灰泥)的厚度(毫米)	Tower 1 (1A) 第1座(1A)	37/F 37樓	150, 175, 200				150, 200	150, 175, 200	150, 175, 200	150, 175
The floor-to-floor height (refers to height between the top surface of the structural slab of a floor and the top surface of the structural slab of its immediate upper floor) of each residential property (mm) 每個住宅物業的層與層之間的高度(指該樓層之石屎地台面與上一層石屎地台面之高度距離)(毫米)			3150				3150, 3440, 3500	3150	3150	3150
The thickness of the floor slabs (excluding plaster) of each residential property (mm) 每個住宅物業的樓板(不包括灰泥)的厚度(毫米)	Tower 1 (1B) 第1座(1B)	23/F - 37/F 23樓至37樓	150	150	150	150, 175, 250				
The floor-to-floor height (refers to height between the top surface of the structural slab of a floor and the top surface of the structural slab of its immediate upper floor) of each residential property (mm) 每個住宅物業的層與層之間的高度(指該樓層之石屎地台面與上一層石屎地台面之高度距離)(毫米)			3150	3150	3150	3150				

The internal areas of the residential properties on the upper floors will generally be slightly larger than those on the lower floors because of the reducing thickness of the structural walls on the upper floors.

因住宅物業的較高樓層的結構牆的厚度遞減，較高樓層的內部面積，一般比較低樓層的內部面積稍大。

Notes:

- The dimensions in the floor plans are all structural dimensions in millimeters and rounded off to the nearest integer.
- For details of the noise mitigation measures, please refer to the Relevant Information section in this sales brochure.
- Please refer to Page 24 of this sales brochure for legend of the terms and abbreviations shown in the floor plan.
- Residential floors start from 5/F. There are no 13/F, 14/F, 24/F and 34/F in each Tower.
- For information of Units B and Units C (Duplex Units) on 23/F & 25/F, 26/F & 27/F, 28/F & 29/F, 30/F & 31/F, 32/F & 33/F, 35/F & 36/F, 37/F & 38/F and 39/F & 40/F of Tower 1 (1A), please refer to page 37 of this sales brochure.

備註：

- 樓面平面圖之尺規所列數字為以毫米標示之建築結構尺寸，並以四捨五入至最接近整數。
- 有關噪音緩解措施之詳情，請參閱本售樓說明書的有關資料章節。
- 平面圖中顯示之名詞及簡稱之圖例請參閱本售樓說明書第24頁。
- 住宅樓層由5樓開始。每座不設13樓、14樓、24樓及34樓。
- 有關第1座(1A) 23樓及25樓、26樓及27樓、28樓及29樓、30樓及31樓、32樓及33樓、35樓及36樓、37樓及38樓、39樓及40樓B單位及C單位(複式單位)之資料，請參閱本售樓說明書第37頁。

11

FLOOR PLANS OF RESIDENTIAL PROPERTIES IN THE PHASE

期數的住宅物業的樓面平面圖

	Tower 座數	Floor 樓層	Unit 單位						
			A	B	C	D	E	F	G
The thickness of the floor slabs (excluding plaster) of each residential property (mm) 每個住宅物業的樓板(不包括灰泥)的厚度(毫米)	Tower 1 (1A) 第1座(1A)	38/F - 39/F 38樓至39樓	150, 175, 200			150, 200	150, 175, 200	150, 175, 200	150, 175
The floor-to-floor height (refers to height between the top surface of the structural slab of a floor and the top surface of the structural slab of its immediate upper floor) of each residential property (mm) 每個住宅物業的層與層之間的高度(指該樓層之石屎地台面與上一層石屎地台面之高度距離)(毫米)			3460			3460	3460	3460	3460
The thickness of the floor slabs (excluding plaster) of each residential property (mm) 每個住宅物業的樓板(不包括灰泥)的厚度(毫米)	Tower 1 (1B) 第1座(1B)		150	150	150	150, 175, 250			
The floor-to-floor height (refers to height between the top surface of the structural slab of a floor and the top surface of the structural slab of its immediate upper floor) of each residential property (mm) 每個住宅物業的層與層之間的高度(指該樓層之石屎地台面與上一層石屎地台面之高度距離)(毫米)			3460	3460	3460	3460			

The internal areas of the residential properties on the upper floors will generally be slightly larger than those on the lower floors because of the reducing thickness of the structural walls on the upper floors.

因住宅物業的較高樓層的結構牆的厚度遞減，較高樓層的內部面積，一般比較低樓層的內部面積稍大。

Notes:

- The dimensions in the floor plans are all structural dimensions in millimeters and rounded off to the nearest integer.
- For details of the noise mitigation measures, please refer to the Relevant Information section in this sales brochure.
- Please refer to Page 24 of this sales brochure for legend of the terms and abbreviations shown in the floor plan.
- Residential floors start from 5/F. There are no 13/F, 14/F, 24/F and 34/F in each Tower.
- For information of Units B and Units C (Duplex Units) on 23/F & 25/F, 26/F & 27/F, 28/F & 29/F, 30/F & 31/F, 32/F & 33/F, 35/F & 36/F, 37/F & 38/F and 39/F & 40/F of Tower 1 (1A), please refer to page 37 of this sales brochure.

備註：

- 樓面平面圖之尺規所列數字為以毫米標示之建築結構尺寸，並以四捨五入至最接近整數。
- 有關噪音緩解措施之詳情，請參閱本售樓說明書的有關資料章節。
- 平面圖中顯示之名詞及簡稱之圖例請參閱本售樓說明書第24頁。
- 住宅樓層由5樓開始。每座不設13樓、14樓、24樓及34樓。
- 有關第1座(1A) 23樓及25樓、26樓及27樓、28樓及29樓、30樓及31樓、32樓及33樓、35樓及36樓、37樓及38樓、39樓及40樓B單位及C單位(複式單位)之資料，請參閱本售樓說明書第37頁。

	Tower 座數	Floor 樓層	Unit 單位						
			A	B	C	D	E	F	G
The thickness of the floor slabs (excluding plaster) of each residential property (mm) 每個住宅物業的樓板(不包括灰泥)的厚度(毫米)	Tower 1 (1A) 第1座(1A)	40/F 40樓	150, 175, 200			150, 200	150, 175, 200	150, 175, 200	150, 175
The floor-to-floor height (refers to height between the top surface of the structural slab of a floor and the top surface of the structural slab of its immediate upper floor) of each residential property (mm) 每個住宅物業的層與層之間的高度(指該樓層之石屎地台面與上一層石屎地台面之高度距離)(毫米)			3060, 3110, 3160, 3170, 3235, 3260, 3285, 3360, 3395, 3410, 3460, 3485, 3510, 3520, 3700, 3710, 3760, 3810, 3860			3460	3160, 3460	3160, 3210, 3295, 3460, 3510, 3520, 3560, 3585, 3760, 3460	3160, 3460
The thickness of the floor slabs (excluding plaster) of each residential property (mm) 每個住宅物業的樓板(不包括灰泥)的厚度(毫米)	Tower 1 (1B) 第1座(1B)		150	150	150	150, 175, 250			
The floor-to-floor height (refers to height between the top surface of the structural slab of a floor and the top surface of the structural slab of its immediate upper floor) of each residential property (mm) 每個住宅物業的層與層之間的高度(指該樓層之石屎地台面與上一層石屎地台面之高度距離)(毫米)			3460	3460	3460	3460			

The internal areas of the residential properties on the upper floors will generally be slightly larger than those on the lower floors because of the reducing thickness of the structural walls on the upper floors.

因住宅物業的較高樓層的結構牆的厚度遞減，較高樓層的內部面積，一般比較低樓層的內部面積稍大。

Notes:

- The dimensions in the floor plans are all structural dimensions in millimeters and rounded off to the nearest integer.
- For details of the noise mitigation measures, please refer to the Relevant Information section in this sales brochure.
- Please refer to Page 24 of this sales brochure for legend of the terms and abbreviations shown in the floor plan.
- Residential floors start from 5/F. There are no 13/F, 14/F, 24/F and 34/F in each Tower.
- For information of Units B and Units C (Duplex Units) on 23/F & 25/F, 26/F & 27/F, 28/F & 29/F, 30/F & 31/F, 32/F & 33/F, 35/F & 36/F, 37/F & 38/F and 39/F & 40/F of Tower 1 (1A), please refer to page 37 of this sales brochure.

備註：

- 樓面平面圖之尺規所列數字為以毫米標示之建築結構尺寸，並以四捨五入至最接近整數。
- 有關噪音緩解措施之詳情，請參閱本售樓說明書的有關資料章節。
- 平面圖中顯示之名詞及簡稱之圖例請參閱本售樓說明書第24頁。
- 住宅樓層由5樓開始。每座不設13樓、14樓、24樓及34樓。
- 有關第1座(1A) 23樓及25樓、26樓及27樓、28樓及29樓、30樓及31樓、32樓及33樓、35樓及36樓、37樓及38樓、39樓及40樓B單位及C單位(複式單位)之資料，請參閱本售樓說明書第37頁。