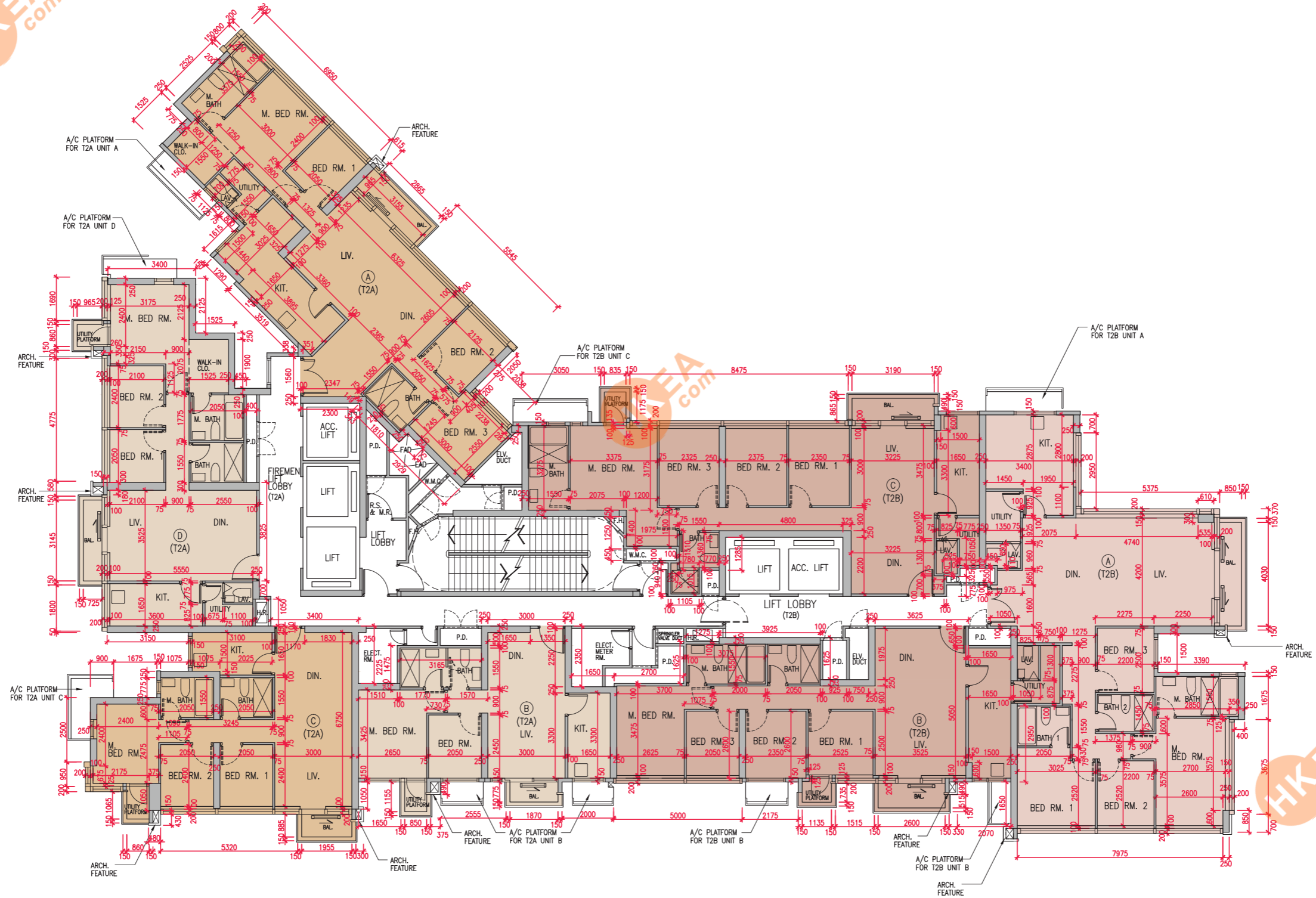


11

FLOOR PLANS OF RESIDENTIAL PROPERTIES IN THE PHASE 期數的住宅物業的樓面平面圖

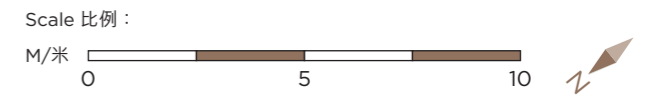
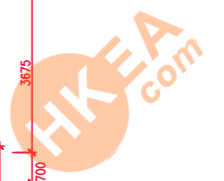
TOWER 2 (2A) & (2B) - 40/F - 41/F

第2座(2A)及(2B) - 40樓至41樓



LEGEND 圖例

- TOWER 2 (2A) 第2座 (2A)
- TOWER 2 (2B) 第2座 (2B)



	Tower 座數	Floor 樓層	Unit 單位			
			A	B	C	D
The thickness of the floor slabs (excluding plaster) of each residential property (mm) 每個住宅物業的樓板(不包括灰泥)的厚度(毫米)	Tower 2 (2A) 第2座(2A)	40/F 40樓	150, 175, 200	150, 175	150, 175	150, 175
The floor-to-floor height (refers to height between the top surface of the structural slab of a floor and the top surface of the structural slab of its immediate upper floor) of each residential property (mm) 每個住宅物業的層與層之間的高度(指該樓層之石屎地台面與上一層石屎地台面之高度距離)(毫米)			3460	3460	3460	3460
The thickness of the floor slabs (excluding plaster) of each residential property (mm) 每個住宅物業的樓板(不包括灰泥)的厚度(毫米)	Tower 2 (2B) 第2座(2B)	40/F 40樓	150, 175, 225	150, 175, 225	150, 175	
The floor-to-floor height (refers to height between the top surface of the structural slab of a floor and the top surface of the structural slab of its immediate upper floor) of each residential property (mm) 每個住宅物業的層與層之間的高度(指該樓層之石屎地台面與上一層石屎地台面之高度距離)(毫米)			3460	3460	3460	
The thickness of the floor slabs (excluding plaster) of each residential property (mm) 每個住宅物業的樓板(不包括灰泥)的厚度(毫米)	Tower 2 (2A) 第2座(2A)	41/F 41樓	150, 175, 200	150, 175	150, 175	150, 175
The floor-to-floor height (refers to height between the top surface of the structural slab of a floor and the top surface of the structural slab of its immediate upper floor) of each residential property (mm) 每個住宅物業的層與層之間的高度(指該樓層之石屎地台面與上一層石屎地台面之高度距離)(毫米)			3460	3460	3460	3460
The thickness of the floor slabs (excluding plaster) of each residential property (mm) 每個住宅物業的樓板(不包括灰泥)的厚度(毫米)	Tower 2 (2B) 第2座(2B)	41/F 41樓	150, 175	150, 175	150, 175, 200	
The floor-to-floor height (refers to height between the top surface of the structural slab of a floor and the top surface of the structural slab of its immediate upper floor) of each residential property (mm) 每個住宅物業的層與層之間的高度(指該樓層之石屎地台面與上一層石屎地台面之高度距離)(毫米)			3460	3460	3460	

The internal areas of the residential properties on the upper floors will generally be slightly larger than those on the lower floors because of the reducing thickness of the structural walls on the upper floors.
因住宅物業的較高樓層的結構牆的厚度遞減，較高樓層的內部面積，一般比較低樓層的內部面積稍大。

Notes:

- The dimensions in the floor plans are all structural dimensions in millimeters and rounded off to the nearest integer.
- For details of the noise mitigation measures, please refer to the Relevant Information section in this sales brochure.
- Please refer to Page 24 of this sales brochure for legend of the terms and abbreviations shown in the floor plan.
- Residential floors start from 5/F. There are no 13/F, 14/F, 24/F and 34/F in each Tower.

備註：

- 樓面平面圖之尺規所列數字為以毫米標示之建築結構尺寸，並以四捨五入至最接近整數。
- 有關噪音緩解措施之詳情，請參閱本售樓說明書的有關資料章節。
- 平面圖中顯示之名詞及簡稱之圖例請參閱本售樓說明書第24頁。
- 住宅樓層由5樓開始。每座不設13樓、14樓、24樓及34樓。