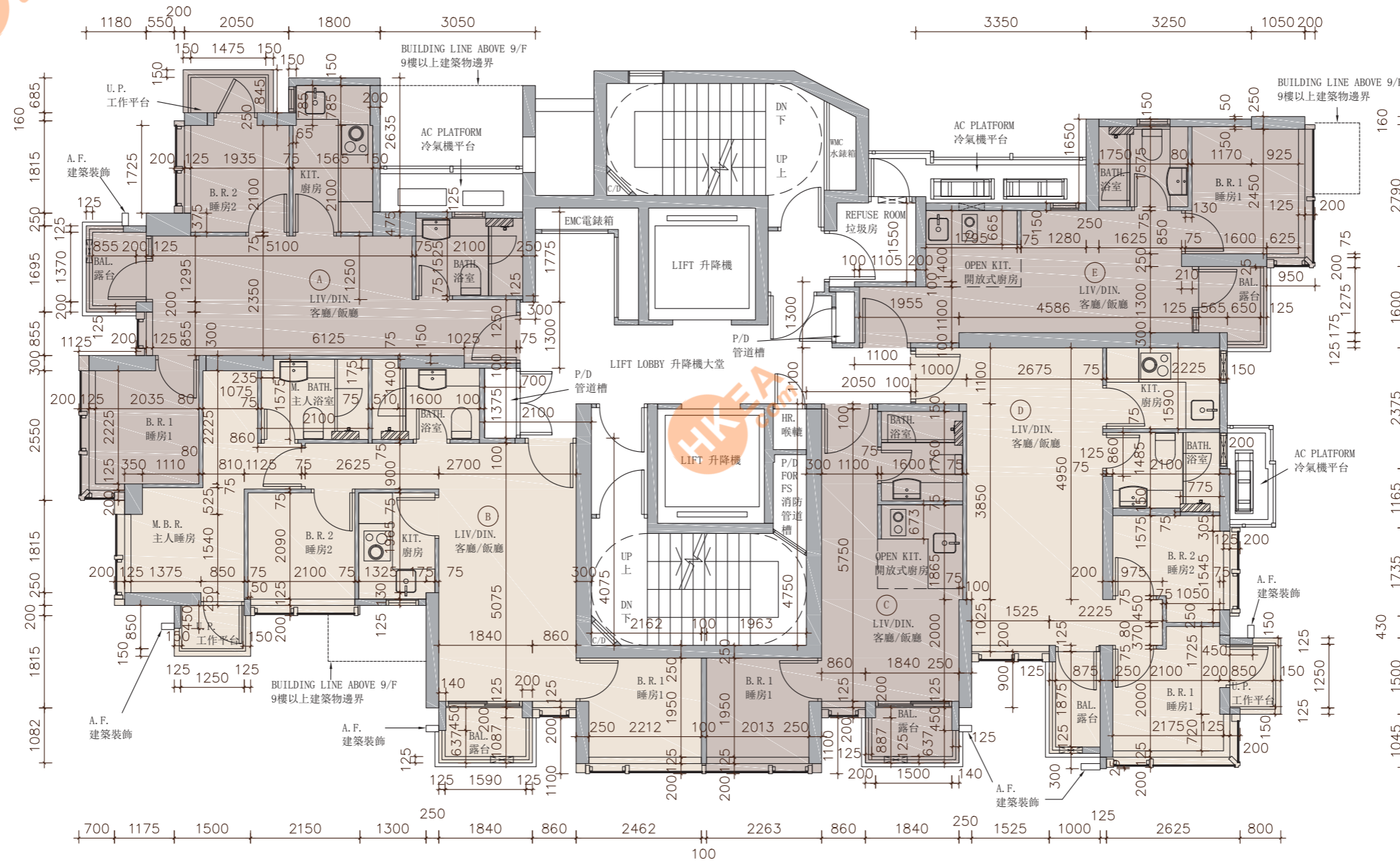


11 FLOOR PLANS OF RESIDENTIAL PROPERTIES IN THE DEVELOPMENT

發展項目的住宅物業的樓面平面圖

5/F to 8/F Floor Plan 5樓至8樓樓面平面圖



Scale 0 2 4M(米)
比例

11 FLOOR PLANS OF RESIDENTIAL PROPERTIES IN THE DEVELOPMENT

發展項目的住宅物業的樓面平面圖

| Each Residential Property 每個住宅物業 | Floor 樓層 | Flat單位 | | | | |
|---|--------------------|---------------------------|------------------------------------|---------------------|---------------------|---------------------------|
| | | A | B | C | D | E |
| The thickness of the floor slabs (excluding plaster) of each residential property (mm) 每個住宅物業的樓板(不包括灰泥)的厚度(毫米) | 5/F - 7/F 5樓至7樓 | 150 | 150 | 150 | 150 | 150 |
| The floor-to-floor height ⁽¹⁾ of each residential property (mm) 每個住宅物業的層與層之間的高度 ⁽¹⁾ (毫米) | | 3390, 3140, 2790 | 3390, 3090, 2890, 2740 | 3390, 3140, 2840 | 3390, 3140, 2840 | 3390, 3140, 2890, 2820 |
| The thickness of the floor slabs (excluding plaster) of each residential property (mm) 每個住宅物業的樓板(不包括灰泥)的厚度(毫米) | 8/F 8樓 | 150 | 150 | 150 | 150 | 150 |
| The floor-to-floor height ⁽¹⁾ of each residential property (mm) 每個住宅物業的層與層之間的高度 ⁽¹⁾ (毫米) | | 3390, 3140, 2790, 2740 | 3390, 3140, 3090, 2840, 2740 | 3390, 3140, 2840 | 3390, 3140, 2840 | 3390, 3140, 2890, 2820 |

⁽¹⁾ Refers to the height between the top surface of the structural slab of the floor and the top surface of the structural slab of its immediate upper floor

⁽¹⁾ 指該樓層之石屎地台面與上一層石屎地台面之高度距離

Notes:

- The dimensions on the floor plans are all structural dimensions in millimetre.
- The internal areas of the residential properties on the upper floors will generally be slightly larger than those on the lower floors because of the reducing thickness of the structural walls on the upper floors.

備註：

- 樓面平面圖所列之數字為以毫米標示之建築結構尺寸。
- 因住宅物業的較高樓層的結構牆的厚度遞減，較高樓層的內部面積，一般比較低樓層的內部面積稍大。