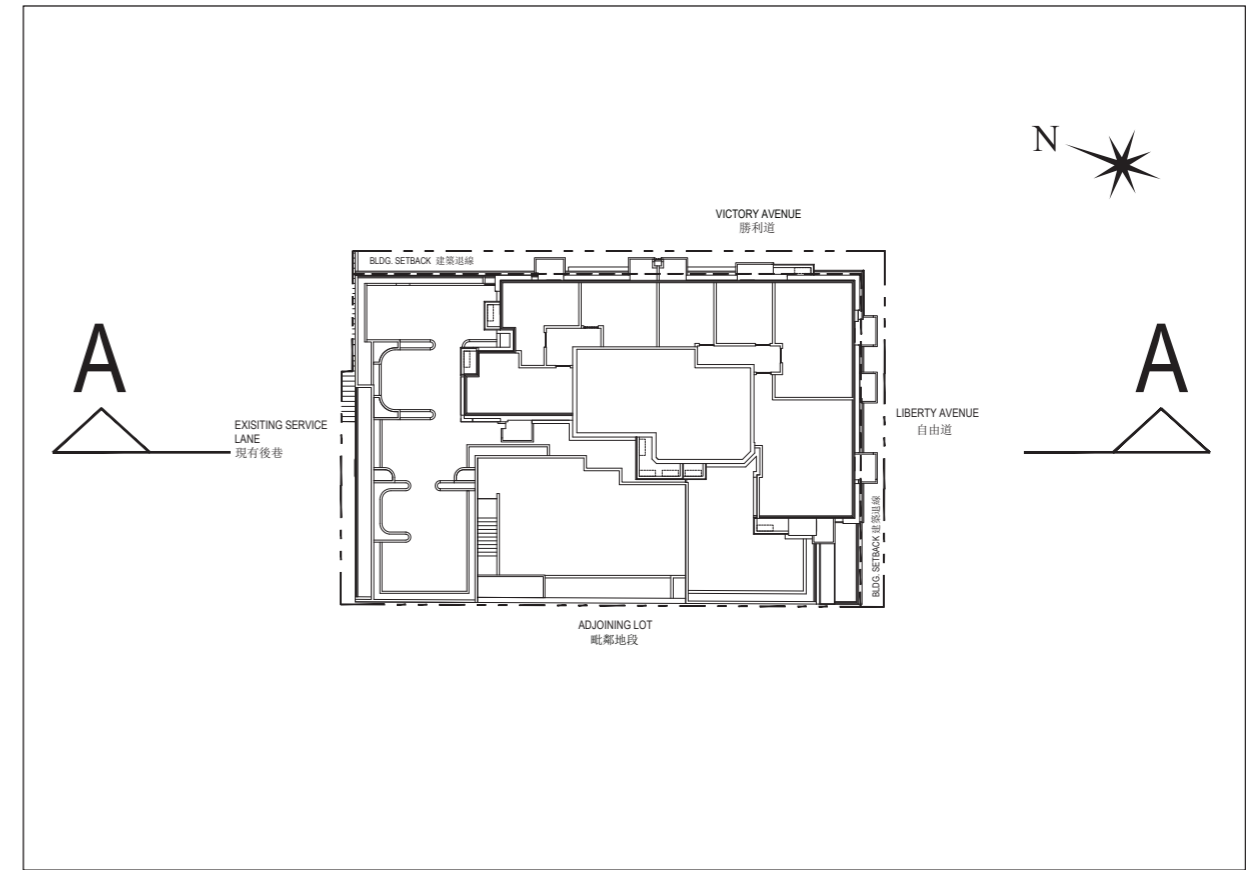
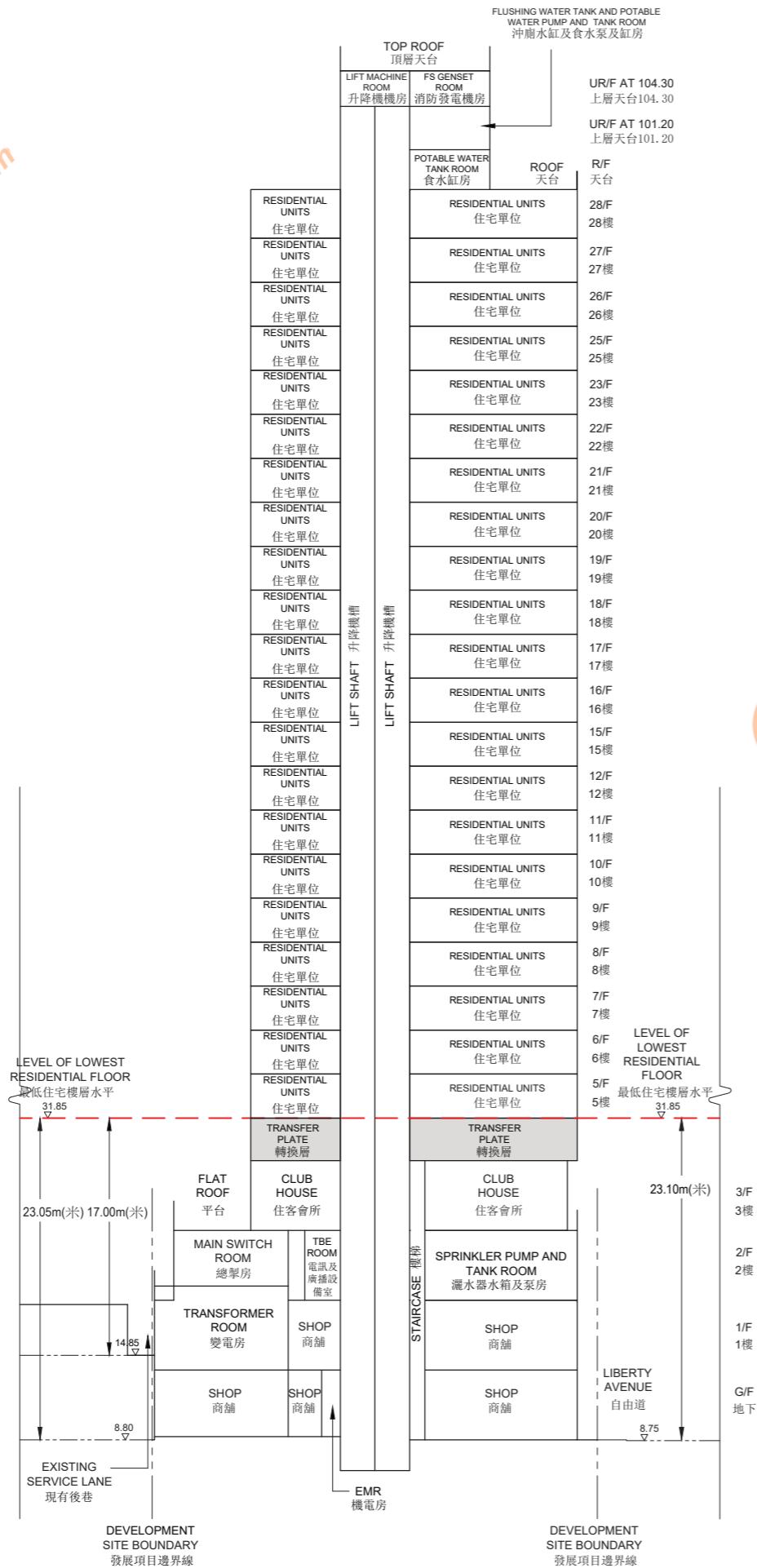


CROSS-SECTION A-A
橫切面圖 A-A



LEGEND 圖例

- Development Site Boundary
發展項目邊界線
- - - Building Setback Line
建築退線

KEY PLAN 指示圖

Notes:

1. (▽) denotes height (in metres) above the Hong Kong Principal Datum.
2. (-----) Dotted line denotes the level of the lowest residential floor.
3. The level of lowest residential floor of the Development is 31.85 metres above Hong Kong Principal Datum (HKPD).
4. The part of existing service lane adjacent to the north-west side of the Development is 8.80 to 14.85 metres above Hong Kong Principal Datum (HKPD).
5. The part of Liberty Avenue adjacent to the south-east side of the Development is 8.75 metres above Hong Kong Principal Datum (HKPD).

備註:

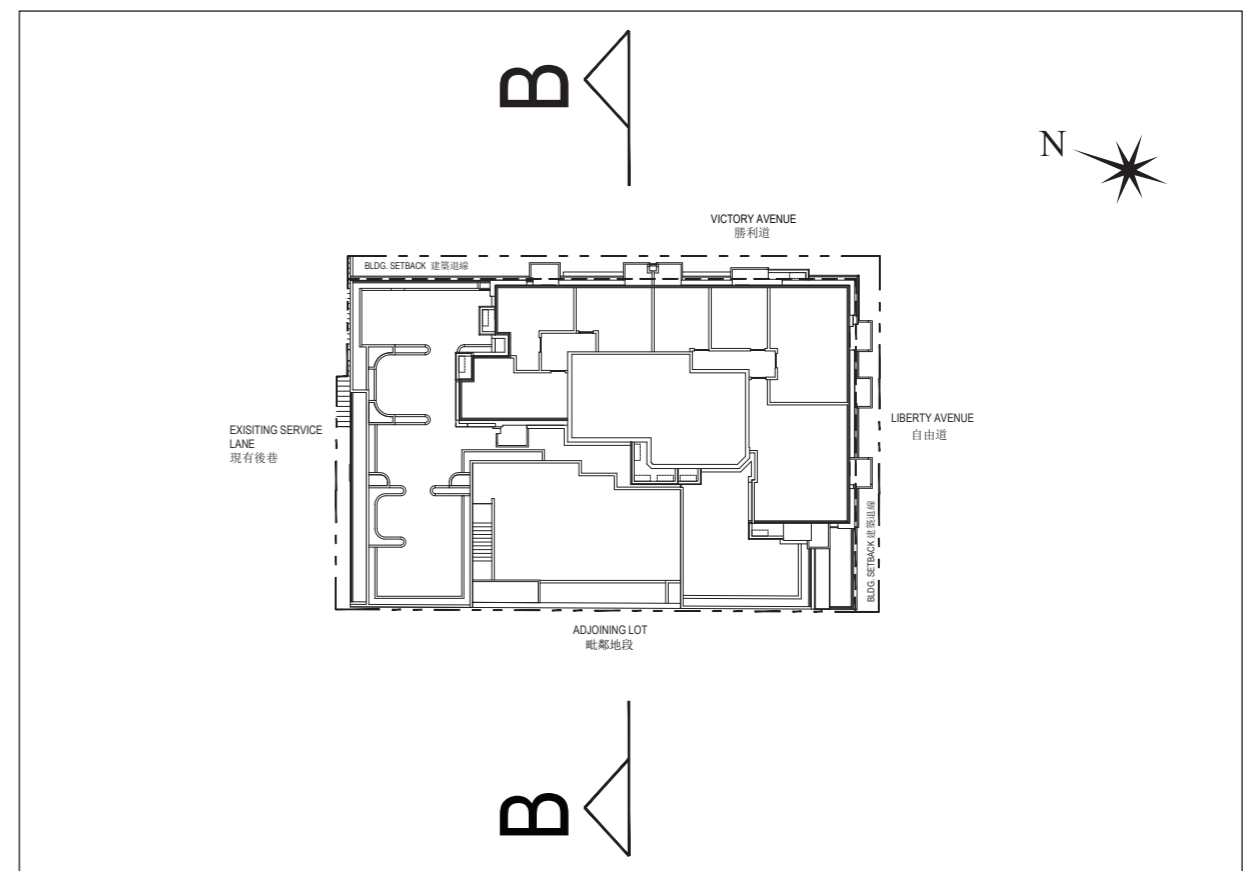
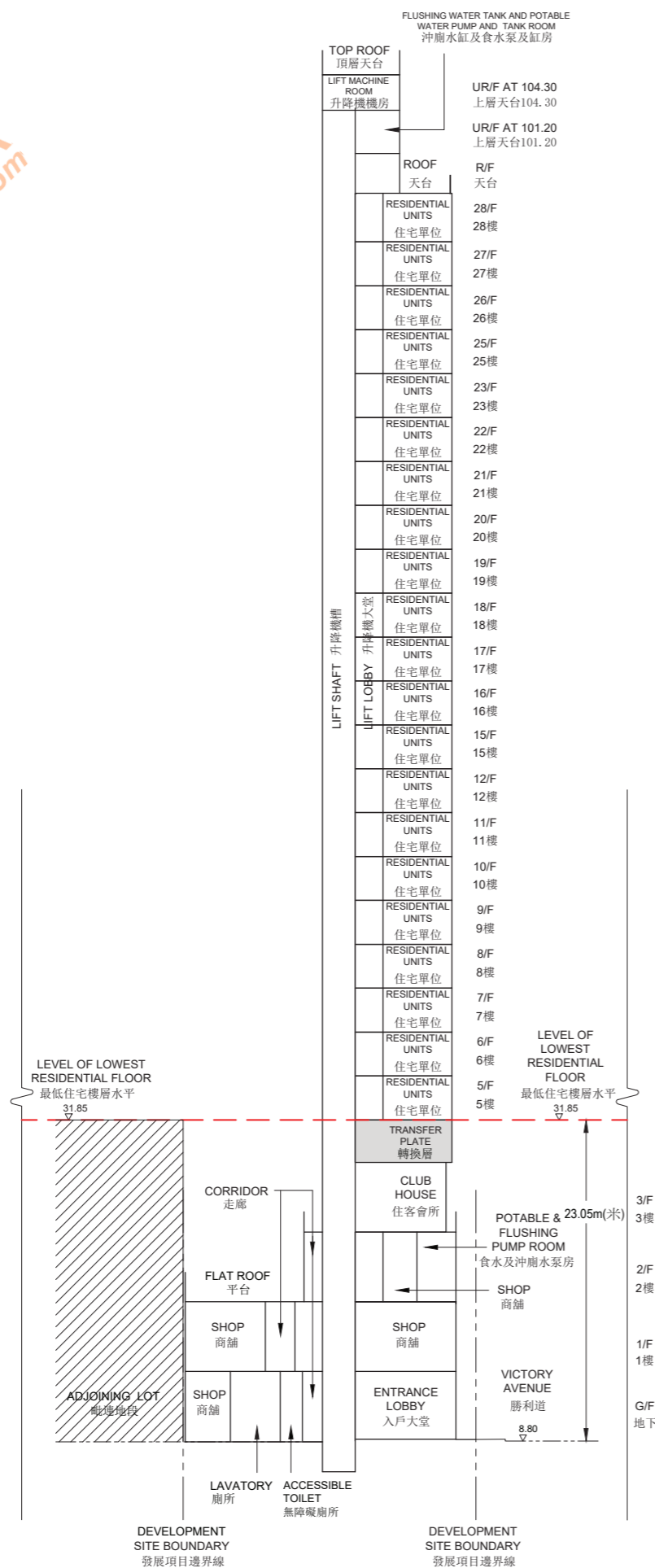
1. (▽)代表香港主水平基準以上的高度(米)。
2. (-----)虛線代表最低住宅樓層水平。
3. 發展項目之最低層住宅為香港主水平基礎以上31.85米。
4. 毗鄰建築物的西北面現有後巷一段為香港主水平基礎以上約8.80米至14.85米。
5. 毗鄰建築物的東南面自由道一段為香港主水平基礎以上8.75米。

19

CROSS-SECTION PLAN OF BUILDING IN THE DEVELOPMENT

發展項目中的建築物的橫截面圖

CROSS-SECTION B-B
橫切面圖 B-B



LEGEND 圖例

KEY PLAN 指示圖

- Development Site Boundary
發展項目邊界線
- - - Building Setback Line
建築退線

Notes:

1. (▽) denotes height (in metres) above the Hong Kong Principal Datum.
2. (-----) Dotted line denotes the level of the lowest residential floor.
3. The level of lowest residential floor of the Development is 31.85 metres above Hong Kong Principal Datum (HKPD).
4. The part of Victory Avenue adjacent to the north-east side of the Development is 8.80 metres above Hong Kong Principal Datum (HKPD).

備註:

1. (▽)代表香港主水平基準以上的高度(米)。
2. (-----)虛線代表最低住宅樓層水平。
3. 發展項目之最低層住宅為香港主水平基礎以上31.85米。
4. 毗鄰建築物的東北面勝利道一段為香港主水平基礎以上8.80米。