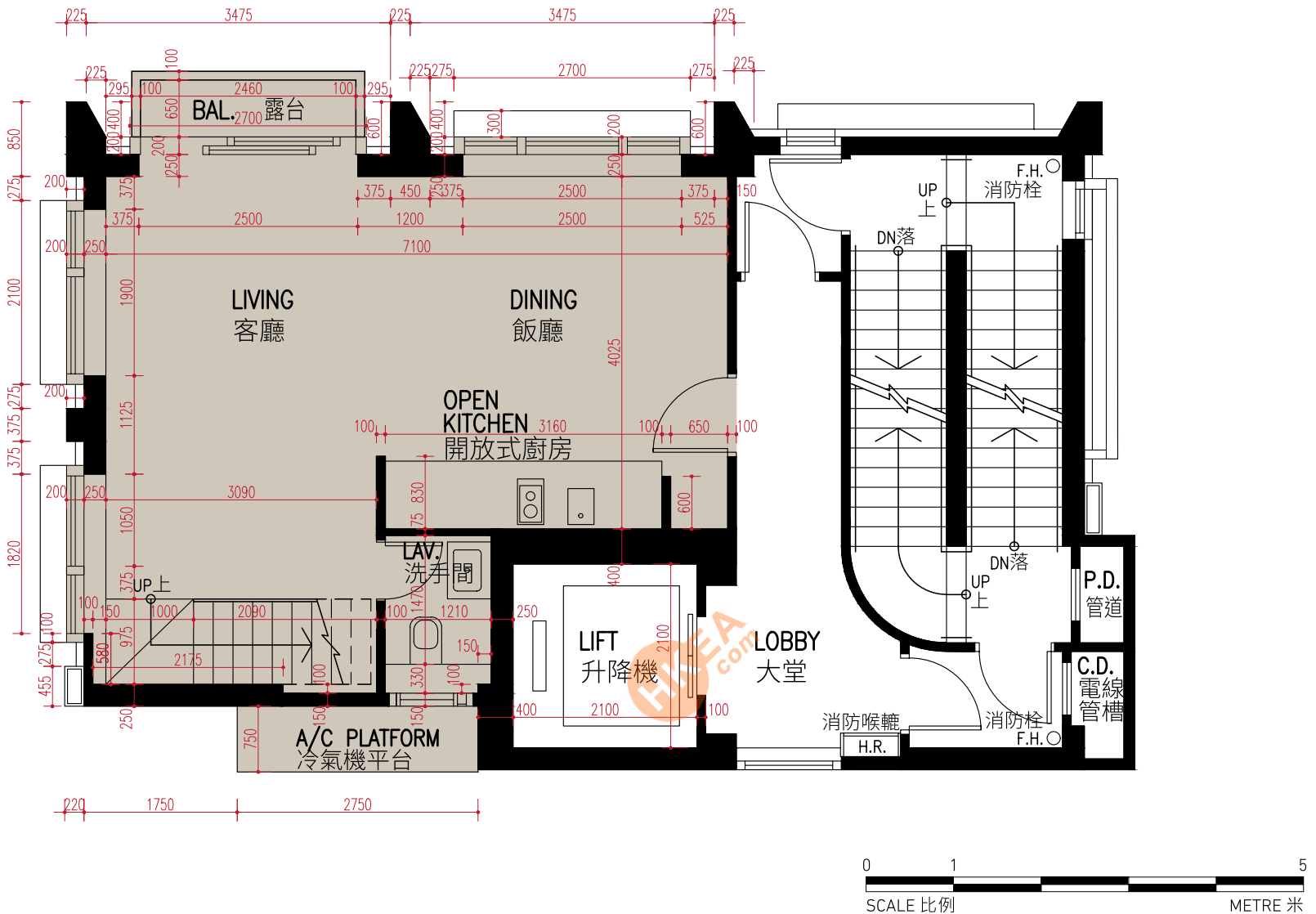


FLOOR PLANS OF RESIDENTIAL PROPERTIES IN THE DEVELOPMENT

發展項目的住宅物業的樓面平面圖

17/F DUPLEX ON SEVENTEEN, 18/F DUPLEX ON EIGHTEEN, 19/F THE APEX FLOOR PLAN
17樓 DUPLEX ON SEVENTEEN, 18樓 DUPLEX ON EIGHTEEN, 19樓 THE APEX樓面平面圖



Floor 樓層	Floor- to -Floor Height(mm) 層與層之間的高度(毫米)	Thickness of Floor Slab(Excluding Plaster)(mm) 樓板(不包括灰泥)的厚度(毫米)
17/F Duplex on Seventeen, 18/F Duplex on Eighteen, 19/F The Apex 17樓 Duplex on Seventeen, 18樓 Duplex on Eighteen, 19樓 The Apex	3150	200, 300

The internal areas of the residential properties on the upper floors will generally be slightly larger than those on the lower floors because of the reducing thickness of the structural walls on the upper floors.

因住宅物業的較高樓層的結構牆的厚度遞減,較高樓層的內部面積,一般比較低樓層的內部面積稍大。

Note:

The dimensions in the floor plans are all structural dimensions in millimeter

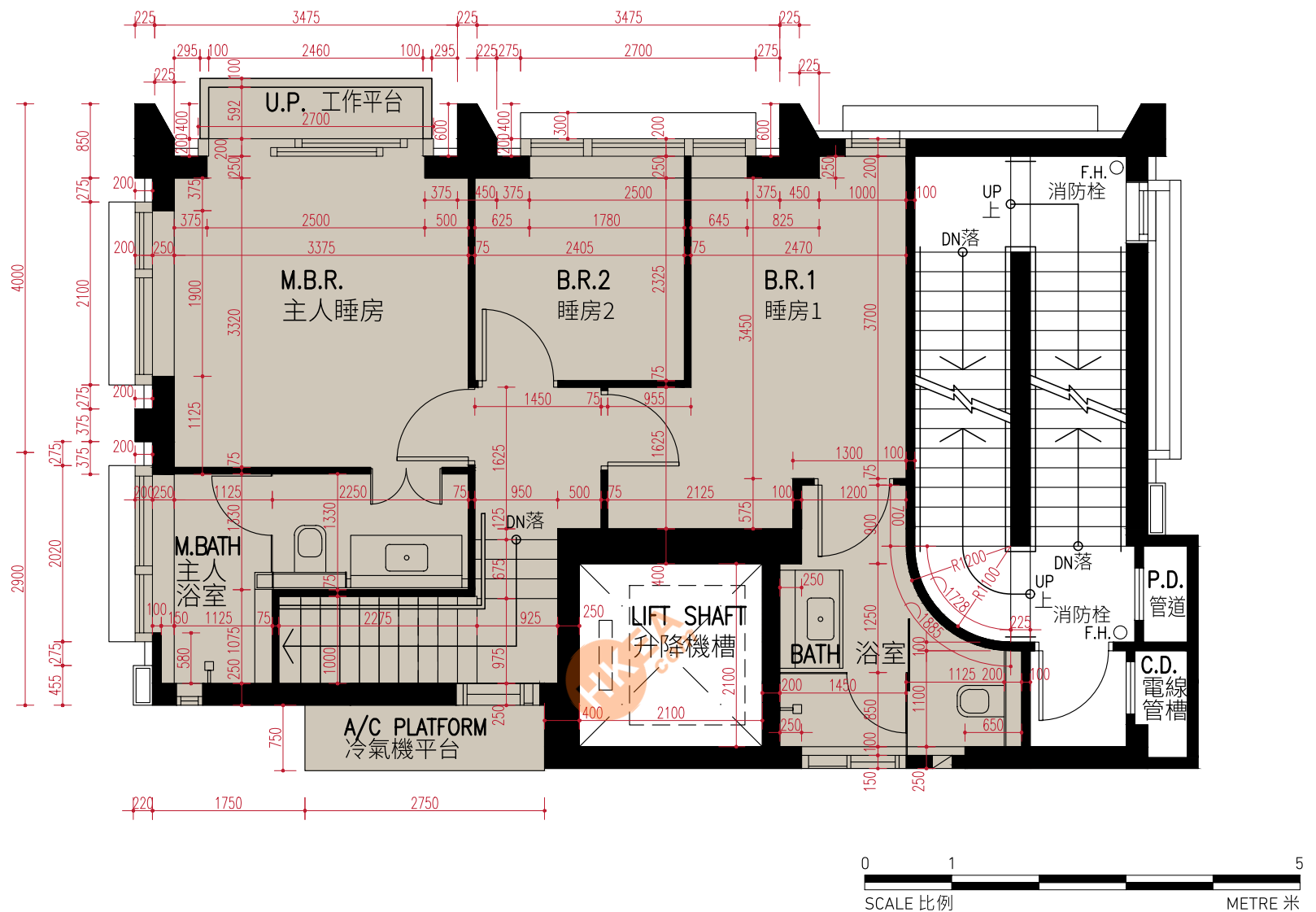
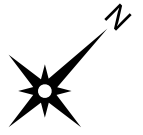
備註:

樓面平面圖之尺寸所列數字為以毫米標示之建築結構尺寸

FLOOR PLANS OF RESIDENTIAL PROPERTIES IN THE DEVELOPMENT

發展項目的住宅物業的樓面平面圖

16U/F DUPLEX ON SIXTEEN, 17U/F DUPLEX ON SEVENTEEN, 18U/F DUPLEX ON EIGHTEEN,
19U/F THE APEX FLOOR PLAN
16U樓 DUPLEX ON SIXTEEN, 17U樓 DUPLEX ON SEVENTEEN, 18U樓 DUPLEX ON EIGHTEEN,
19U樓 THE APEX樓面平面圖



Floor 樓層	Floor- to -Floor Height(mm) 層與層之間的高度(毫米)	Thickness of Floor Slab(Excluding Plaster)(mm) 樓板(不包括灰泥)的厚度(毫米)
16U/F Duplex on Sixteen, 17U/F Duplex on Seventeen, 18U/F Duplex on Eighteen, 19U/F The Apex 16U樓 Duplex on Sixteen, 17U樓 Duplex on Seventeen, 18U樓 Duplex on Eighteen, 19U樓 The Apex	3150	200, 300

The internal areas of the residential properties on the upper floors will generally be slightly larger than those on the lower floors because of the reducing thickness of the structural walls on the upper floors.

因住宅物業的較高樓層的結構牆的厚度遞減,較高樓層的內部面積,一般比較低樓層的內部面積稍大。

Note:

The dimensions in the floor plans are all structural dimensions in millimeter

備註:

樓面平面圖之尺寸所列數字為以毫米標示之建築結構尺寸