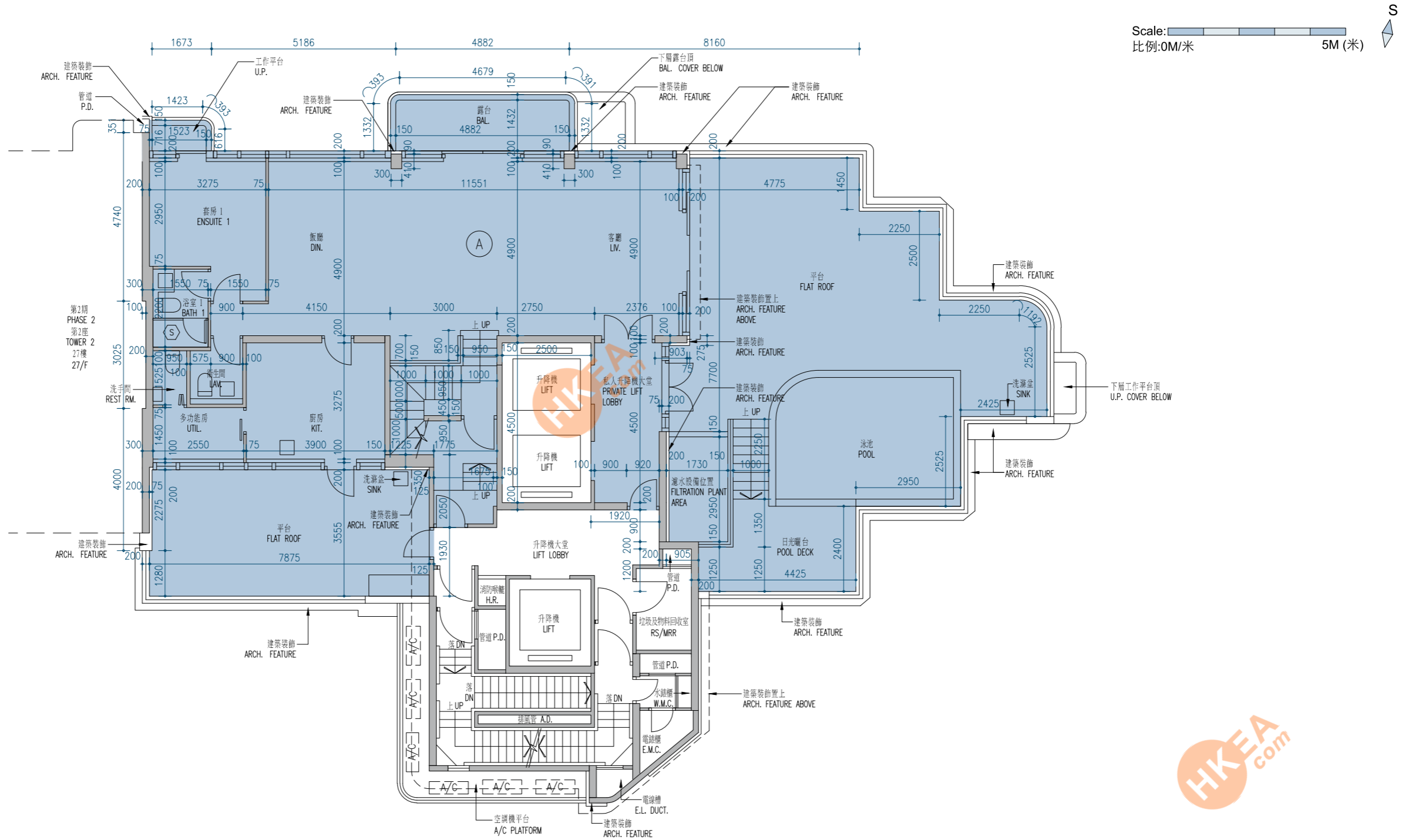


Phase 2 Tower 1 27/F Floor Plan 第2期第1座27樓樓面平面圖



	Tower 座數	Floor 樓層	Units 單位
			A
The thickness of the floor slabs (excluding plaster) of each residential property (mm) 每個住宅物業的樓板(不包括灰泥)的厚度(毫米)	Phase 2 Tower 1 第2期 第1座	27/F 27樓	150, 300
The floor-to-floor height (i.e. the height between the top surface of the structural slab of a floor and the top surface of the structural slab of its immediate upper floor) of each residential property (mm) 每個住宅物業的層與層之間的高度(指該樓層之石屎地台面與上一層石屎地台面之高度距離)(毫米)			3700, 3750, 4000

The internal areas of the residential properties on the upper floors will generally be slightly larger than those on the lower floors because of the reducing thickness of the structural walls on the upper floors. (Note: This statement required in Section 10(2)(e) in Part 1 of Schedule 1 of the Residential Properties (First-hand Sales) Ordinance (Cap.621) is not applicable to the Phase).

Notes:

- The dimensions in the floor plans are all structural dimensions in millimetre.
- Please refer to page 23 of this sales brochure for legend of the terms and abbreviations in studying the floor plans.

因住宅物業的較高樓層的結構牆的厚度遞減，較高樓層的內部面積，一般比較低樓層的內部面積稍大。(註：此根據《一手住宅物業銷售條例》(第621章)附表1第1部第10(2)(e)條所規定的陳述並不適用於期數)

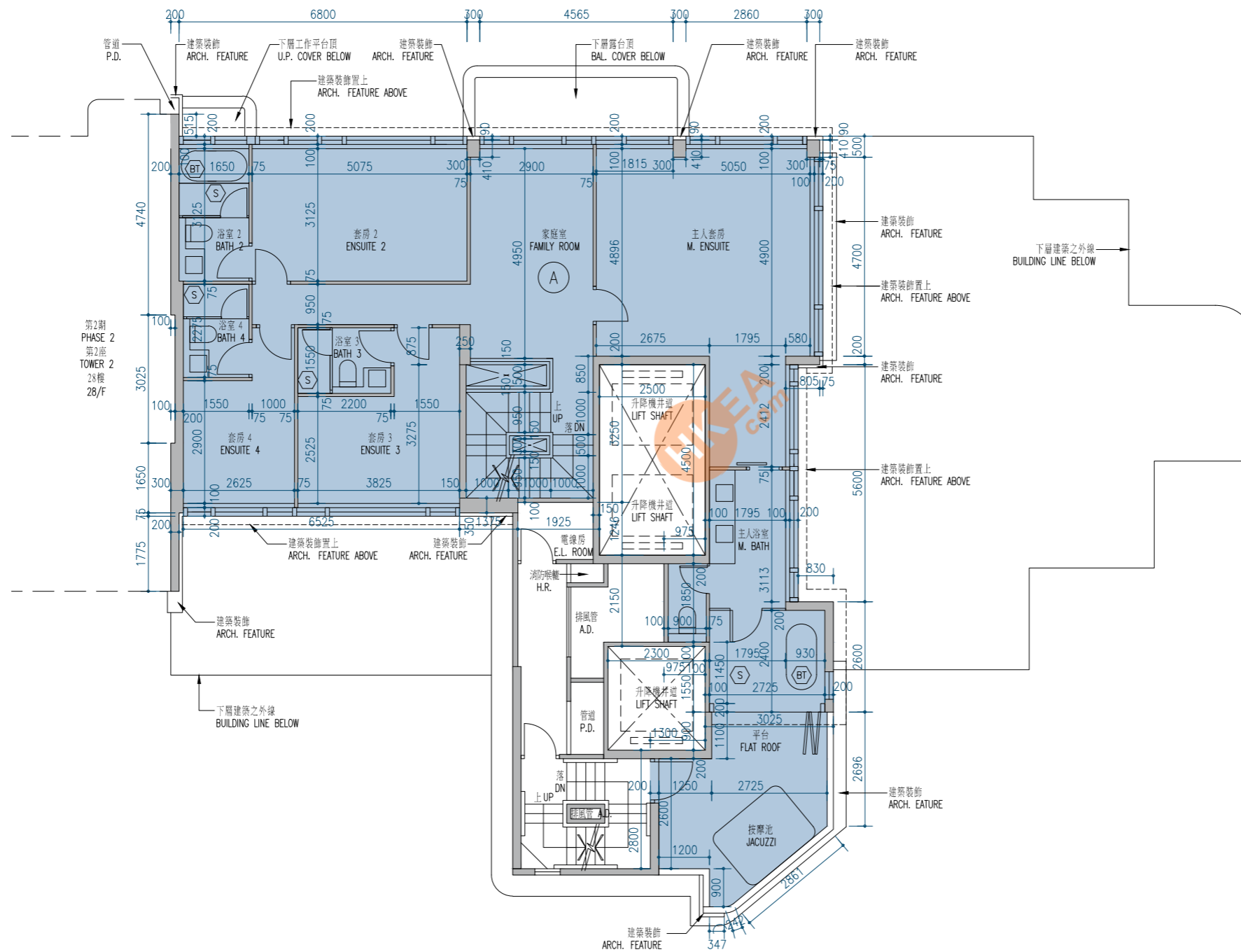
附註：

- 樓面平面圖之尺規所列數字為以毫米標示之建築結構尺寸。
- 請參閱本售樓說明書第23頁之圖例以協助閱讀樓面平面圖之名稱和簡稱。

Phase 2 Tower 1 28/F Floor Plan 第2期第1座28樓樓面平面圖



Scale: 比例: 0M/米 5M (米)



	Tower 座數	Floor 樓層	Units 單位
			A
The thickness of the floor slabs (excluding plaster) of each residential property (mm) 每個住宅物業的樓板(不包括灰泥)的厚度(毫米)	Phase 2 Tower 1 第2期 第1座	28/F 28樓	150, 200
The floor-to-floor height (i.e. the height between the top surface of the structural slab of a floor and the top surface of the structural slab of its immediate upper floor) of each residential property (mm) 每個住宅物業的層與層之間的高度(指該樓層之石屎地台面與上一層石屎地台面之高度距離)(毫米)			3250

The internal areas of the residential properties on the upper floors will generally be slightly larger than those on the lower floors because of the reducing thickness of the structural walls on the upper floors. (Note: This statement required in Section 10(2)(e) in Part 1 of Schedule 1 of the Residential Properties (First-hand Sales) Ordinance (Cap.621) is not applicable to the Phase).

Notes:

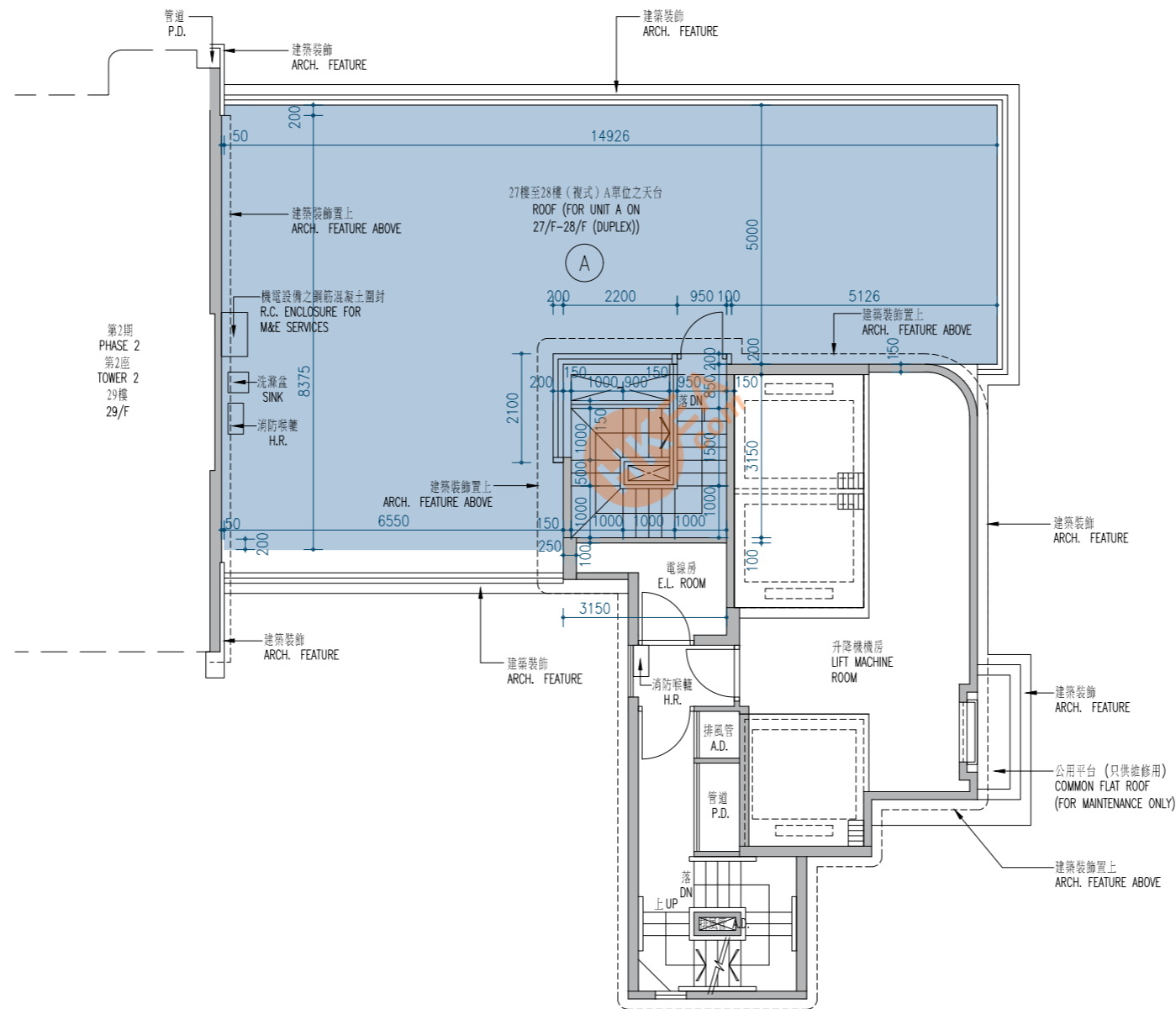
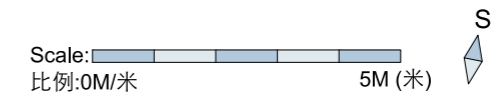
- The dimensions in the floor plans are all structural dimensions in millimetre.
- Please refer to page 23 of this sales brochure for legend of the terms and abbreviations in studying the floor plans.

因住宅物業的較高樓層的結構牆的厚度遞減，較高樓層的內部面積，一般比較低樓層的內部面積稍大。(註：此根據《一手住宅物業銷售條例》(第621章)附表1第1部第10(2)(e)條所規定的陳述並不適用於期數)

附註：

- 樓面平面圖之尺規所列數字為以毫米標示之建築結構尺寸。
- 請參閱本售樓說明書第23頁之圖例以協助閱讀樓面平面圖之名稱和簡稱。

Phase 2 Tower 1 Roof Plan 第2期第1座 天台平面圖



	Tower 座數	Floor 樓層	Units 單位
			A
The thickness of the floor slabs (excluding plaster) of each residential property (mm) 每個住宅物業的樓板(不包括灰泥)的厚度(毫米)	Phase 2 Tower 1 第2期 第1座	Roof 天台	200
The floor-to-floor height (i.e. the height between the top surface of the structural slab of a floor and the top surface of the structural slab of its immediate upper floor) of each residential property (mm) 每個住宅物業的層與層之間的高度(指該樓層之石屎地台面與上一層石屎地台面之高度距離)(毫米)			3500

The internal areas of the residential properties on the upper floors will generally be slightly larger than those on the lower floors because of the reducing thickness of the structural walls on the upper floors. (Note: This statement required in Section 10(2)(e) in Part 1 of Schedule 1 of the Residential Properties (First-hand Sales) Ordinance (Cap.621) is not applicable to the Phase).

Notes:

- The dimensions in the floor plans are all structural dimensions in millimetre.
- Please refer to page 23 of this sales brochure for legend of the terms and abbreviations in studying the floor plans.

因住宅物業的較高樓層的結構牆的厚度遞減，較高樓層的內部面積，一般比較低樓層的內部面積稍大。(註：此根據《一手住宅物業銷售條例》(第621章)附表1第1部第10(2)(e)條所規定的陳述並不適用於期數)

附註：

- 樓面平面圖之尺規所列數字為以毫米標示之建築結構尺寸。
- 請參閱本售樓說明書第23頁之圖例以協助閱讀樓面平面圖之名稱和簡稱。