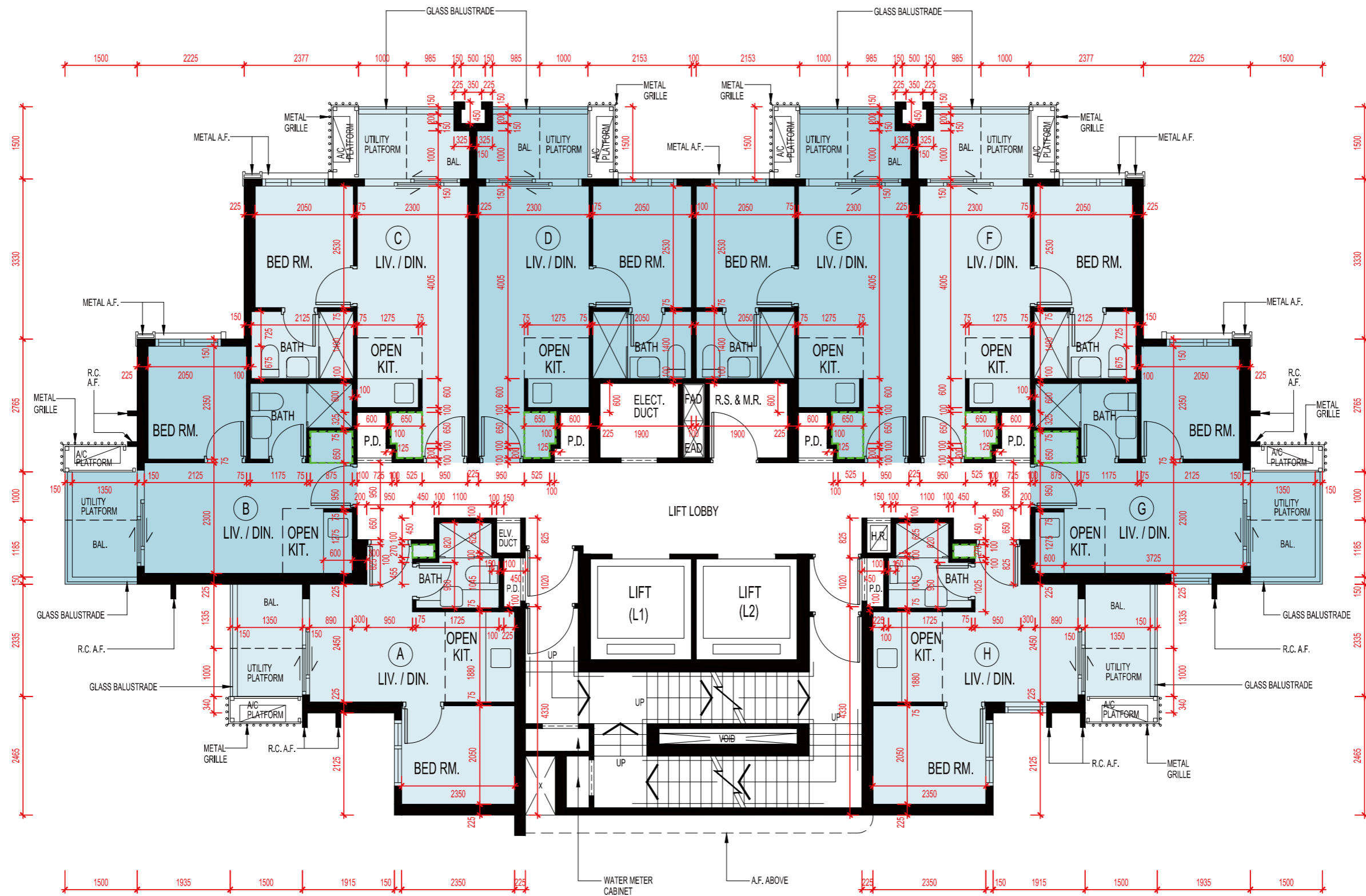



FLOOR PLANS OF RESIDENTIAL PROPERTIES IN THE DEVELOPMENT 發展項目的住宅物業的樓面平面圖

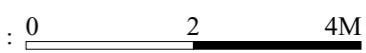
5/F – 12/F & 15/F – 19/F
5樓至12樓及15樓至19樓



Note:
The dimensions in the floor plans are all structural dimensions in millimeter.

備註：
平面圖所列之數字為以毫米標示之建築結構尺寸。

 Built-in fittings provided in the units
隨樓附送嵌入式裝置

Scale 比例：0  4M(米)

FLOOR PLANS OF RESIDENTIAL PROPERTIES IN THE DEVELOPMENT 發展項目的住宅物業的樓面平面圖

Description 描述	Floor 樓層	Unit 單位							
		A	B	C	D	E	F	G	H
Floor-to-floor height (refer to the height between the top surface of the structural slab of a floor and the top surface of the structural slab of its immediate upper floor) of each residential property (mm) 每個住宅物業的層與層之間的高度(指該樓層之石屎地台面與上一層石屎地台面之高度距離)(毫米)	5/F – 12/F & 15/F – 18/F 5樓至12樓及 15樓至18樓	3500	3500	3500	3500	3500	3500	3500	3500
The thickness of the floor slabs (excluding plaster) of each residential property (mm) 每個住宅物業的樓板(不包括灰泥)的厚度(毫米)		150*	150*	150 [#]	150 [#]	150 [#]	150 [#]	150*	150*
Floor-to-floor height (refer to the height between the top surface of the structural slab of a floor and the top surface of the structural slab of its immediate upper floor) of each residential property (mm) 每個住宅物業的層與層之間的高度(指該樓層之石屎地台面與上一層石屎地台面之高度距離)(毫米)	19/F 19樓	3500, 3600, 3800, 3950	3500, 3800, 3950	3500, 3600, 3850	3500, 3600, 3850	3500, 3600, 3850	3500, 3600, 3850	3500, 3800, 3950	3500, 3600, 3800, 3950
The thickness of the floor slabs (excluding plaster) of each residential property (mm) 每個住宅物業的樓板(不包括灰泥)的厚度(毫米)		200*	200*	200 [#]	200 [#]	200 [#]	200 [#]	200*	200*

Remarks:

- The internal areas of the residential properties on the upper floors will generally be slightly larger than those on the lower floors because of the reducing thickness of the structural walls on the upper floors: Not applicable to this Development.
 - Please refer to p.19 of this sales brochure for legends of terms, abbreviations shown on the above floor plans and the remarks that are applicable thereto.
 - 4/F, 13/F and 14/F are omitted.
- * Thickness of the floor slabs exclude thickness of 300mm, 350mm and 450mm light weight concrete fill on sunken slab.
Thickness of the floor slabs exclude thickness of 250mm and 350mm light weight concrete fill on sunken slab.

備註:

- 因住宅物業較高樓層的結構牆厚度遞減，較高樓層的內部面積，一般比較低樓層的內部面積稍大：此發展項目不適用。
 - 平面圖中顯示的名詞、簡稱及其適用之備註，請參閱本售樓說明書第19頁。
 - 不設4樓、13樓及14樓。
- * 樓板厚度不包括跌級樓板上300毫米、350毫米及450毫米厚的輕混凝土填充層厚度。
樓板厚度不包括跌級樓板上250毫米及350毫米厚的輕混凝土填充層厚度。