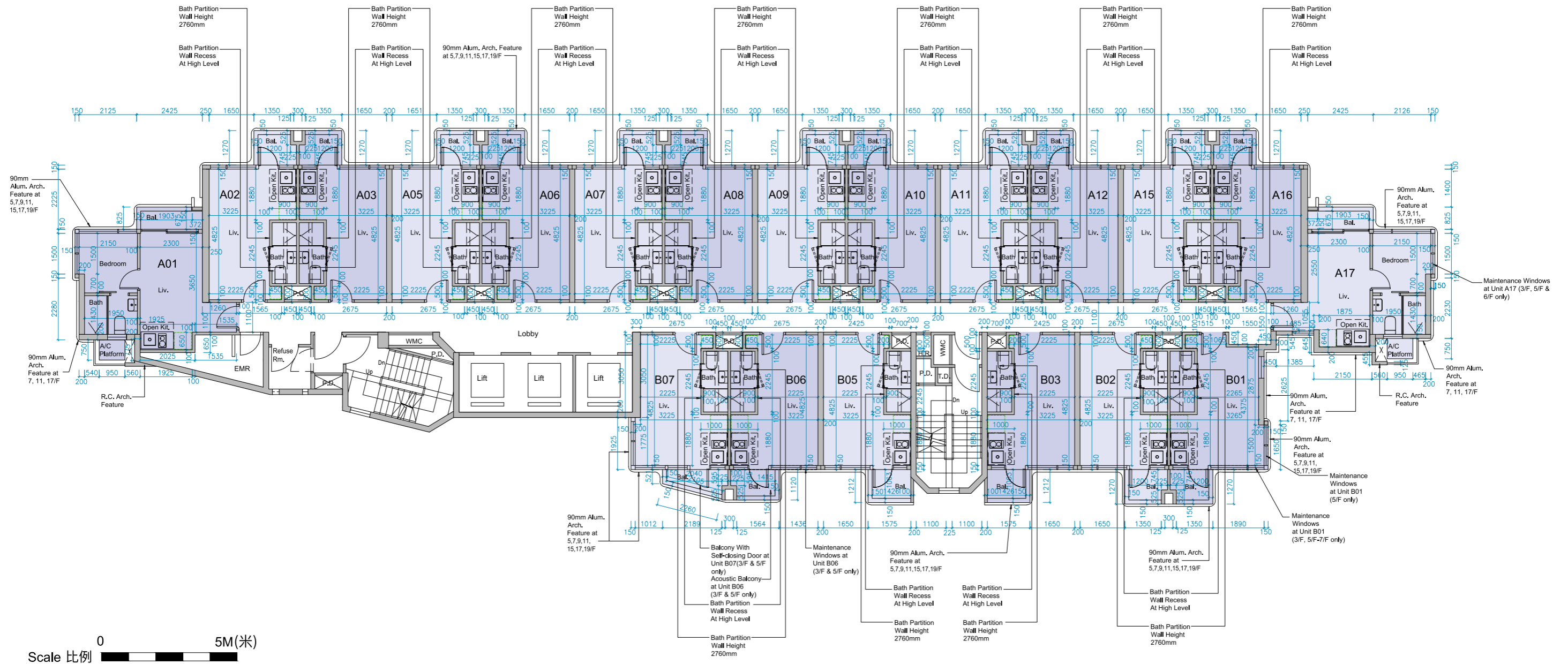
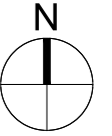


FLOOR PLANS OF RESIDENTIAL PROPERTIES IN THE DEVELOPMENT

發展項目的住宅物業的樓面平面圖

3/F, 5/F-12/F & 15/F-20/F Floor Plan

3樓、5樓-12樓及15樓-20樓平面圖



Note : The dimensions of floor plans are all structural dimensions in millimeter.
備註 : 平面圖所列之數字為以毫米標示之建築結構尺寸。

FLOOR PLANS OF RESIDENTIAL PROPERTIES IN THE DEVELOPMENT

發展項目的住宅物業的樓面平面圖

Each Residential Property 每個住宅物業	Floor 樓層	Unit 單位													
		A01	A02	A03	A05	A06	A07	A08	A09	A10	A11	A12	A15	A16	A17
Thickness of Floor Slab (excluding plaster) (mm) 樓板 (不包括灰泥) 的厚度 (毫米)	3/F, 5/F-12/F & 15/F-19/F 3樓、5樓-12樓及 15樓-19樓	125, 150, 175	125, 150, 175	125, 150, 175	125, 150, 175	125, 150, 175	125, 150, 175	125, 150, 175	125, 150, 175	125, 150, 175	125, 150, 175	125, 150, 175	125, 150, 175	125, 150, 175	125, 150, 175
Floor-to-Floor Height (mm) 層與層之間的高度 (毫米)		3500	3500	3500	3500	3500	3500	3500	3500	3500	3500	3500	3500	3500	3500
Each Residential Property 每個住宅物業	Floor 樓層	Unit 單位													
		B01	B02	B03	B05	B06	B07								
Thickness of Floor Slab (excluding plaster) (mm) 樓板 (不包括灰泥) 的厚度 (毫米)	3/F, 5/F-12/F & 15/F-19/F 3樓、5樓-12樓及 15樓-19樓	125, 150, 175	125, 150, 175	125, 150, 175	125, 150, 175	125, 150, 175	125, 150, 175								
Floor-to-Floor Height (mm) 層與層之間的高度 (毫米)		3500	3500	3500	3500	3500	3500								

The internal areas of the residential properties on the upper floors will generally be slightly larger than those on the lower floors because of the reducing thickness of the structural walls on the upper floors.
因住宅物業的較高樓層的結構牆的厚度遞減，較高樓層的內部面積，一般比較低樓層的內部面積稍大。

Notes : 1. Please refer to pages 17-18 of this Sales Brochure for legend of the terms and abbreviations used on the floor plan above and the explanatory notes that are applicable thereto.
2. 4/F, 13/F and 14/F are omitted.

備註 : 1. 樓面平面圖中所使用名詞及簡稱之圖例及其適用的備註，請參閱本售樓說明書第17至18頁。
2. 不設4樓、13樓及14樓。

FLOOR PLANS OF RESIDENTIAL PROPERTIES IN THE DEVELOPMENT

發展項目的住宅物業的樓面平面圖

Each Residential Property 每個住宅物業	Floor 樓層	Unit 單位													
		A01	A02	A03	A05	A06	A07	A08	A09	A10	A11	A12	A15	A16	A17
Thickness of Floor Slab (excluding plaster) (mm) 樓板 (不包括灰泥) 的厚度 (毫米)	20/F 20樓	150, 175	150, 175	150, 175	150, 175	150, 175	150, 175	150, 175	150, 175	150, 175	150, 175	150, 175	150, 175	150, 175	150, 175
Floor-to-Floor Height (mm) 層與層之間的高度 (毫米)		3500, 3550, 3800	3500, 3550, 3800, 3900	3500, 3550, 3800, 3900	3500, 3550, 3800, 3900	3500, 3550, 3800, 3900	3500, 3550, 3800, 3900	3500, 3550, 3800, 3900	3500, 3550, 3800, 3900	3500, 3550, 3800, 3900	3500, 3550, 3800, 3900	3500, 3550, 3800, 3900	3500, 3550, 3800, 3900	3500, 3550, 3800, 3900	3500, 3550, 3800, 3900
Each Residential Property 每個住宅物業	Floor 樓層	Unit 單位													
		B01	B02	B03	B05	B06	B07								
Thickness of Floor Slab (excluding plaster) (mm) 樓板 (不包括灰泥) 的厚度 (毫米)	20/F 20樓	150, 175	150, 175	150, 175	150, 175	150, 175	150, 175								
Floor-to-Floor Height (mm) 層與層之間的高度 (毫米)		3500, 3550, 3800, 3900	3500, 3550, 3800, 3900	3500, 3550, 3800, 3900	3500, 3550, 3800, 3900	3500, 3550, 3800, 3900	3500, 3550, 3800, 3900								

The internal areas of the residential properties on the upper floors will generally be slightly larger than those on the lower floors because of the reducing thickness of the structural walls on the upper floors.
因住宅物業的較高樓層的結構牆的厚度遞減，較高樓層的內部面積，一般比較低樓層的內部面積稍大。

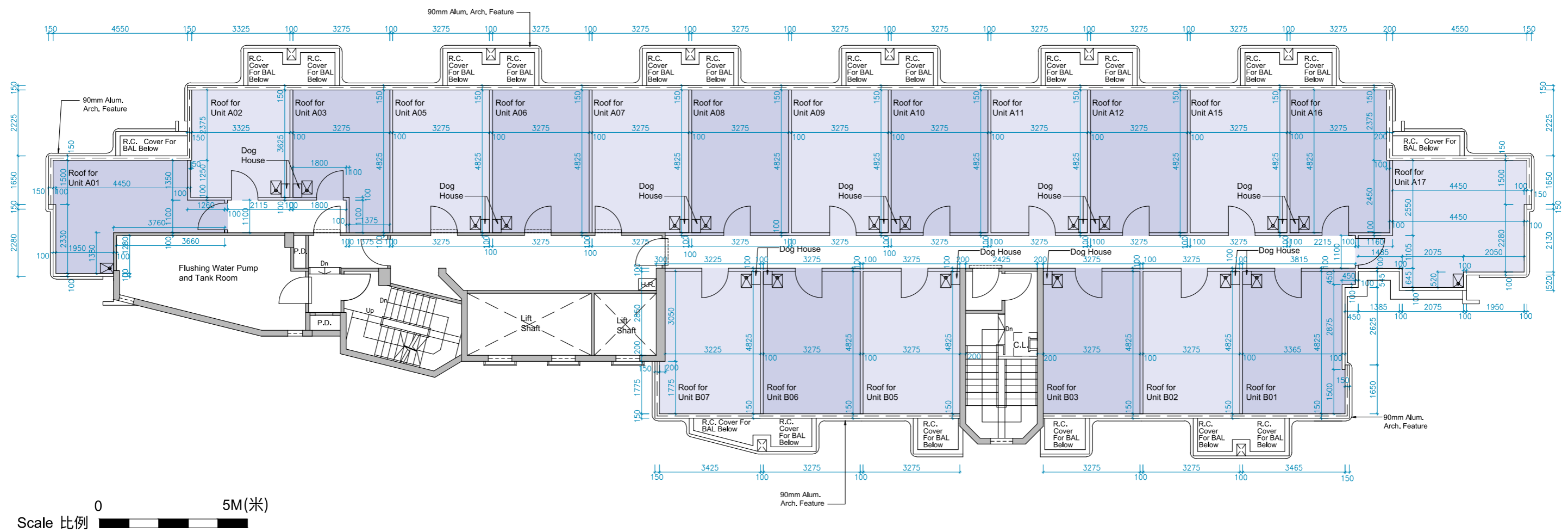
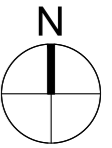
Note : Please refer to pages 17-18 of this Sales Brochure for legend of the terms and abbreviations used on the floor plan above and the explanatory notes that are applicable thereto.
備註 : 樓面平面圖中所使用名詞及簡稱之圖例及其適用的備註，請參閱本售樓說明書第17至18頁。

FLOOR PLANS OF RESIDENTIAL PROPERTIES IN THE DEVELOPMENT

發展項目的住宅物業的樓面平面圖

Main Roof Floor Plan

天台平面圖



Note : The dimensions of floor plans are all structural dimensions in millimeter.
 備註：平面圖所列之數字為以毫米標示之建築結構尺寸。

FLOOR PLANS OF RESIDENTIAL PROPERTIES IN THE DEVELOPMENT

發展項目的住宅物業的樓面平面圖

Each Residential Property 每個住宅物業	Floor 樓層	Unit 單位													
		A01	A02	A03	A05	A06	A07	A08	A09	A10	A11	A12	A15	A16	A17
Thickness of Floor Slab (excluding plaster) (mm) 樓板 (不包括灰泥) 的厚度 (毫米)	Main Roof Floor 天台	Not Applicable 不適用													
Floor-to-Floor Height (mm) 層與層之間的高度 (毫米)		Not Applicable 不適用													
Each Residential Property 每個住宅物業	Floor 樓層	Unit 單位													
		B01	B02	B03	B05	B06	B07								
Thickness of Floor Slab (excluding plaster) (mm) 樓板 (不包括灰泥) 的厚度 (毫米)	Main Roof Floor 天台	Not Applicable 不適用													
Floor-to-Floor Height (mm) 層與層之間的高度 (毫米)		Not Applicable 不適用													

The internal areas of the residential properties on the upper floors will generally be slightly larger than those on the lower floors because of the reducing thickness of the structural walls on the upper floors.
因住宅物業的較高樓層的結構牆的厚度遞減，較高樓層的內部面積，一般比較低樓層的內部面積稍大。

Note : Please refer to pages 17-18 of this Sales Brochure for legend of the terms and abbreviations used on the floor plan above and the explanatory notes that are applicable thereto.
備註 : 樓面平面圖中所使用名詞及簡稱之圖例及其適用的備註，請參閱本售樓說明書第17至18頁。