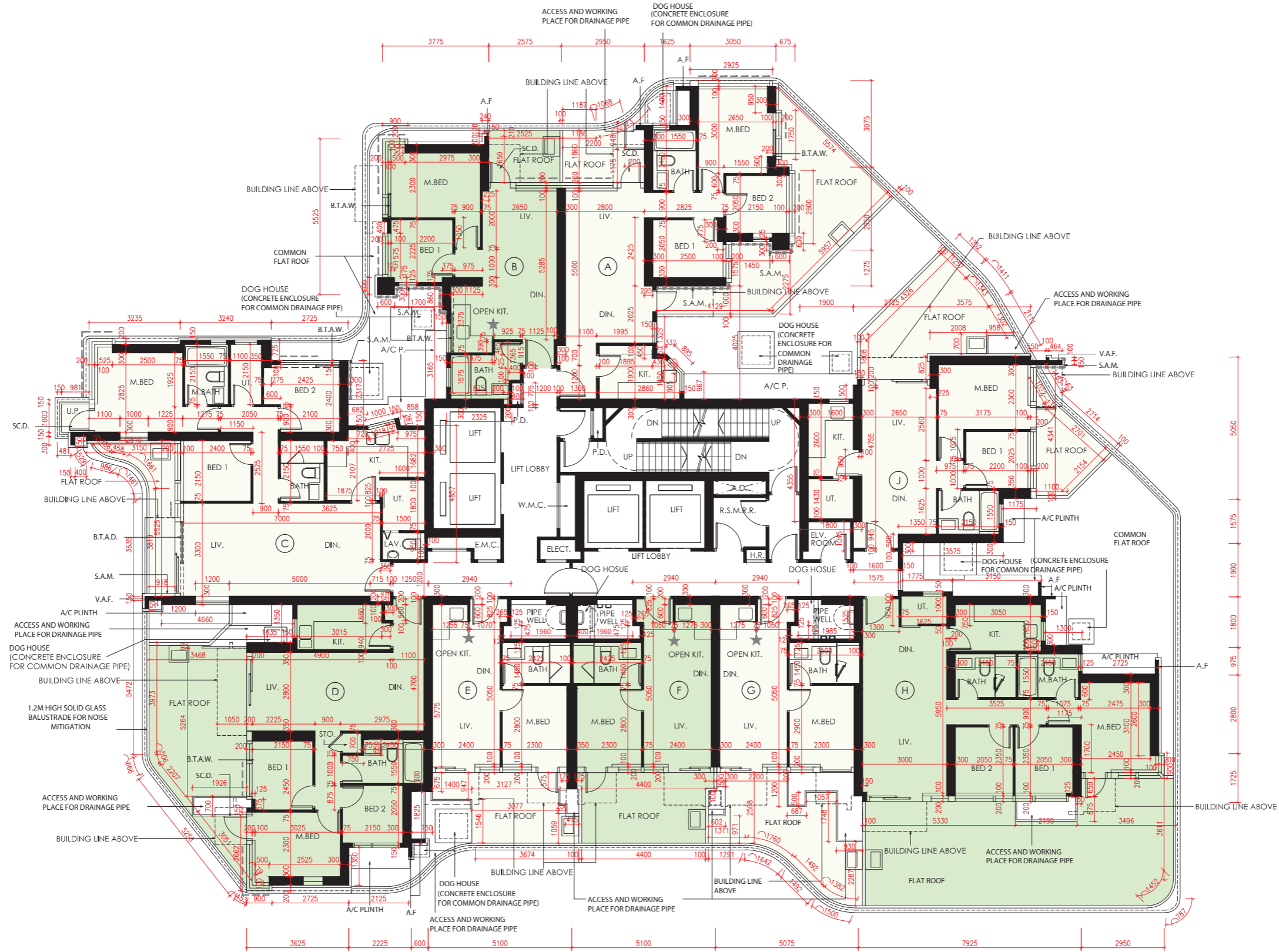


TOWER 3  
第3座

5/F  
5樓

FLOOR PLAN  
樓面平面圖



Scale 0 5M/米  
比例

Description 描述	Tower 座	Floor 樓層	Unit 單位								
			A	B	C	D	E	F	G	H	J
The thickness of the floor slabs (excluding plaster) of each residential property (mm) 每個住宅物業的樓板（不包括灰泥）的厚度（毫米）	Tower 3 第3座	5/F 5樓	150	150 & 175		150	150 & 200			150	150 & 175
The floor-to-floor height (refers to the height between the top surface of the structural slab of a floor and the top surface of the structural slab of its immediate upper floor) of each residential property (mm) 每個住宅物業的層與層之間的高度（指該樓層之石屎地台面與上一層石屎地台面之高度距離）（毫米）			2800, 3150 & 3475		2800, 3100, 3150 & 3475	2800, 3150 & 3475	2800, 3100, 3150 & 3475			2800, 3150 & 3475	

The internal areas of the residential properties on the upper floors will generally be slightly larger than those on the lower floors because of the reducing thickness of the structural walls on the upper floors.

因住宅物業的較高樓層的結構牆的厚度遞減，較高樓層的內部面積，一般比較低樓層的內部面積稍大。

Notes:

- The dimensions in the floor plans are all structural dimensions in millimetre and rounded off to the nearest integer.
- Please refer to Page 22-23 of this sales brochure for legend of the terms and abbreviations shown in the floor plan.
- Blank areas on the Flat roof are common areas that only the Manager shall have access in performance of its duty and exercise of its power.
- In relation to the Flat roofs of Units A, D, E, G, H & J of Tower 3, there are certain Residential Common Areas marked "Access and Working Place for Drainage Pipe" and "Concrete Enclosure for Common Drainage Pipe" which have to be accessed through certain Residential Units on the 5th Floor of the Tower.

備註：

- 樓面平面圖之尺規所列數字為以毫米標示之建築結構尺寸，並以四捨五入至整數。
- 平面圖中顯示之名詞及簡稱之圖例請參閱本售樓說明書第22-23頁。
- 平台空白位置只供管理人為履行其職責及行使權力而進入。
- 有關發展項目第3座5樓A、D、E、G、H及J單位平台存在某些住宅公用地方並以「排水管道維修空間」及「公共排水管道的混凝土圍封」標記，並且需經由某些於該座5樓住宅單位而進入。