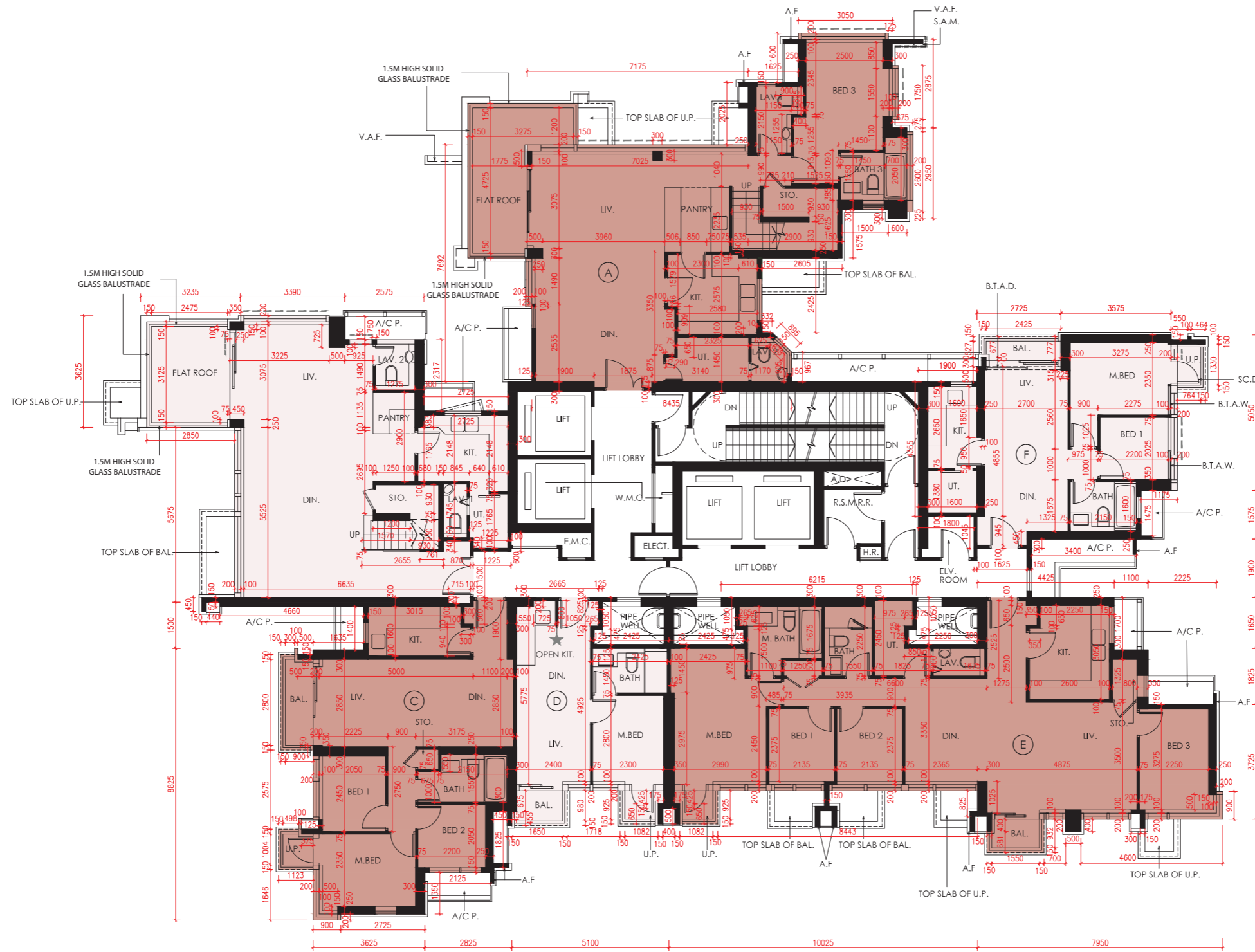


TOWER 5  
第5座

50/F  
50樓

FLOOR PLAN  
樓面平面圖



Scale 0 5M/米  
比例

Description 描述	Tower 座	Floor 樓層	Unit 單位						
			A	B	C	D	E	F	
The thickness of the floor slabs (excluding plaster) of each residential property (mm) 每個住宅物業的樓板（不包括灰泥）的厚度（毫米）	Tower 5 第5座	50/F 50樓	150 & 200	150		150 & 200		150, 175 & 200	150 & 175
The floor-to-floor height (refers to the height between the top surface of the structural slab of a floor and the top surface of the structural slab of its immediate upper floor) of each residential property (mm) 每個住宅物業的層與層之間的高度（指該樓層之石屎地台面與上一層石屎地台面之高度距離）（毫米）			3150, 3500 & 3850	3050, 3150, 3400, 3500 & 3850	3500		3150, 3500 & 3850		3500

The internal areas of the residential properties on the upper floors will generally be slightly larger than those on the lower floors because of the reducing thickness of the structural walls on the upper floors.

因住宅物業的較高樓層的結構牆的厚度遞減，較高樓層的內部面積，一般比較低樓層的內部面積稍大。

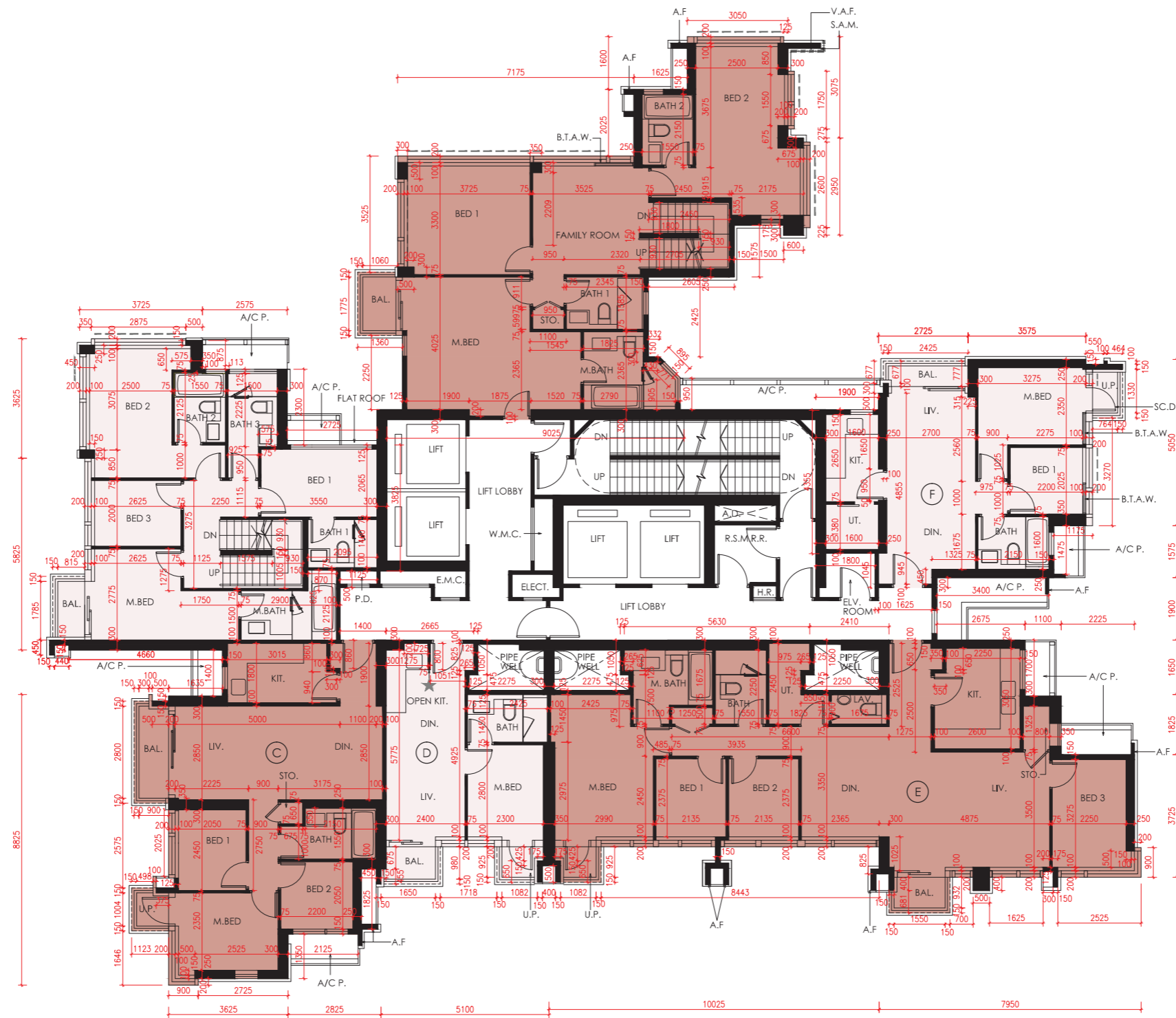
1. The dimensions in the floor plans are all structural dimensions in millimetre and rounded off to the nearest integer.
2. Please refer to Page 22-23 of this sales brochure for legend of the terms and abbreviations shown in the floor plan.

1. 樓面平面圖之尺規所列數字為以毫米標示之建築結構尺寸，並以四捨五入至整數。
2. 平面圖中顯示之名詞及簡稱之圖例請參閱本售樓說明書第22-23頁。

TOWER 5  
第5座

51/F  
51樓

FLOOR PLAN  
樓面平面圖



Scale 0 5M/米  
比例

Description 描述	Tower 座	Floor 樓層	Unit 單位					
			A	B	C	D	E	F
The thickness of the floor slabs (excluding plaster) of each residential property (mm) 每個住宅物業的樓板（不包括灰泥）的厚度（毫米）	Tower 5 第5座	51/F 51樓	150, 175 & 200	150 & 200	150	150 & 200	150, 175 & 200	150 & 175
The floor-to-floor height (refers to the height between the top surface of the structural slab of a floor and the top surface of the structural slab of its immediate upper floor) of each residential property (mm) 每個住宅物業的層與層之間的高度（指該樓層之石屎地台面與上一層石屎地台面之高度距離）（毫米）			3050, 3400, 3500 & 3850	3050, 3500, 3850 & 3950	3500 & 3850	3500, 3850, 3900 & 4250	3500 & 3850	

The internal areas of the residential properties on the upper floors will generally be slightly larger than those on the lower floors because of the reducing thickness of the structural walls on the upper floors.

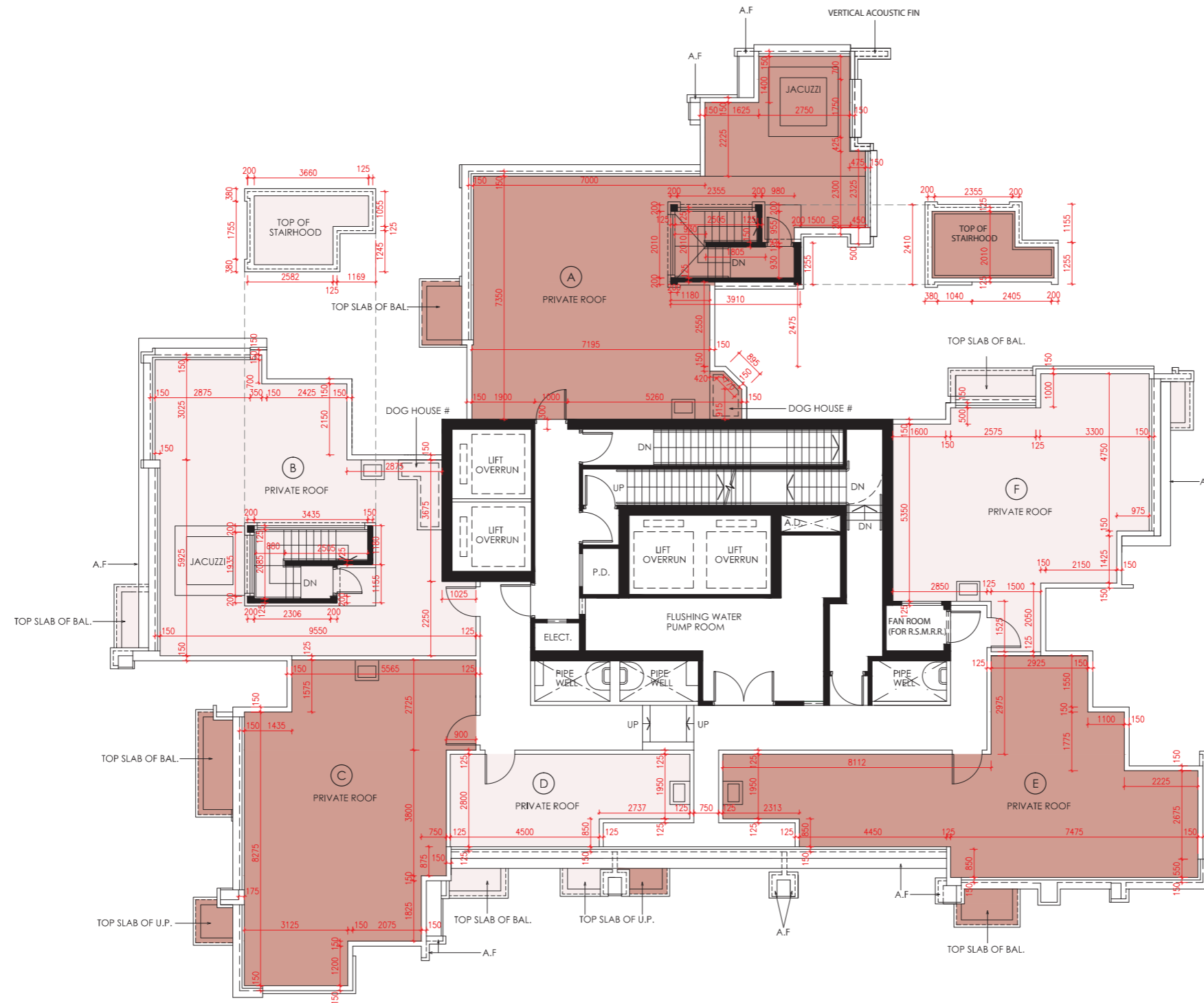
因住宅物業的較高樓層的結構牆的厚度遞減，較高樓層的內部面積，一般比較低樓層的內部面積稍大。

1. The dimensions in the floor plans are all structural dimensions in millimetre and rounded off to the nearest integer.
2. Please refer to Page 22-23 of this sales brochure for legend of the terms and abbreviations shown in the floor plan.

1. 樓面平面圖之尺規所列數字為以毫米標示之建築結構尺寸，並以四捨五入至整數。
2. 平面圖中顯示之名詞及簡稱之圖例請參閱本售樓說明書第22-23頁。

### TOWER 5 第5座

### ROOF FLOOR PLAN 天台平面圖



Scale 0 5M/米  
比例

Description 描述	Tower 座	Floor 樓層	Unit 單位					
			A	B	C	D	E	F
The thickness of the floor slabs (excluding plaster) of each residential property (mm) 每個住宅物業的樓板（不包括灰泥）的厚度（毫米）	Tower 5 第5座	Roof 天台	150		Not Applicable 不適用			
The floor-to-floor height (refers to the height between the top surface of the structural slab of a floor and the top surface of the structural slab of its immediate upper floor) of each residential property (mm) 每個住宅物業的層與層之間的高度（指該樓層之石屎地台面與上一層石屎地台面之高度距離）（毫米）			2700		Not Applicable 不適用			

The internal areas of the residential properties on the upper floors will generally be slightly larger than those on the lower floors because of the reducing thickness of the structural walls on the upper floors.

因住宅物業的較高樓層的結構牆的厚度遞減，較高樓層的內部面積，一般比較低樓層的內部面積稍大。

1. The dimensions in the floor plans are all structural dimensions in millimetre and rounded off to the nearest integer.
2. Please refer to Page 22-23 of this sales brochure for legend of the terms and abbreviations shown in the floor plan.

1. 樓面平面圖之尺規所列數字為以毫米標示之建築結構尺寸，並以四捨五入至整數。
2. 平面圖中顯示之名詞及簡稱之圖例請參閱本售樓說明書第22-23頁。