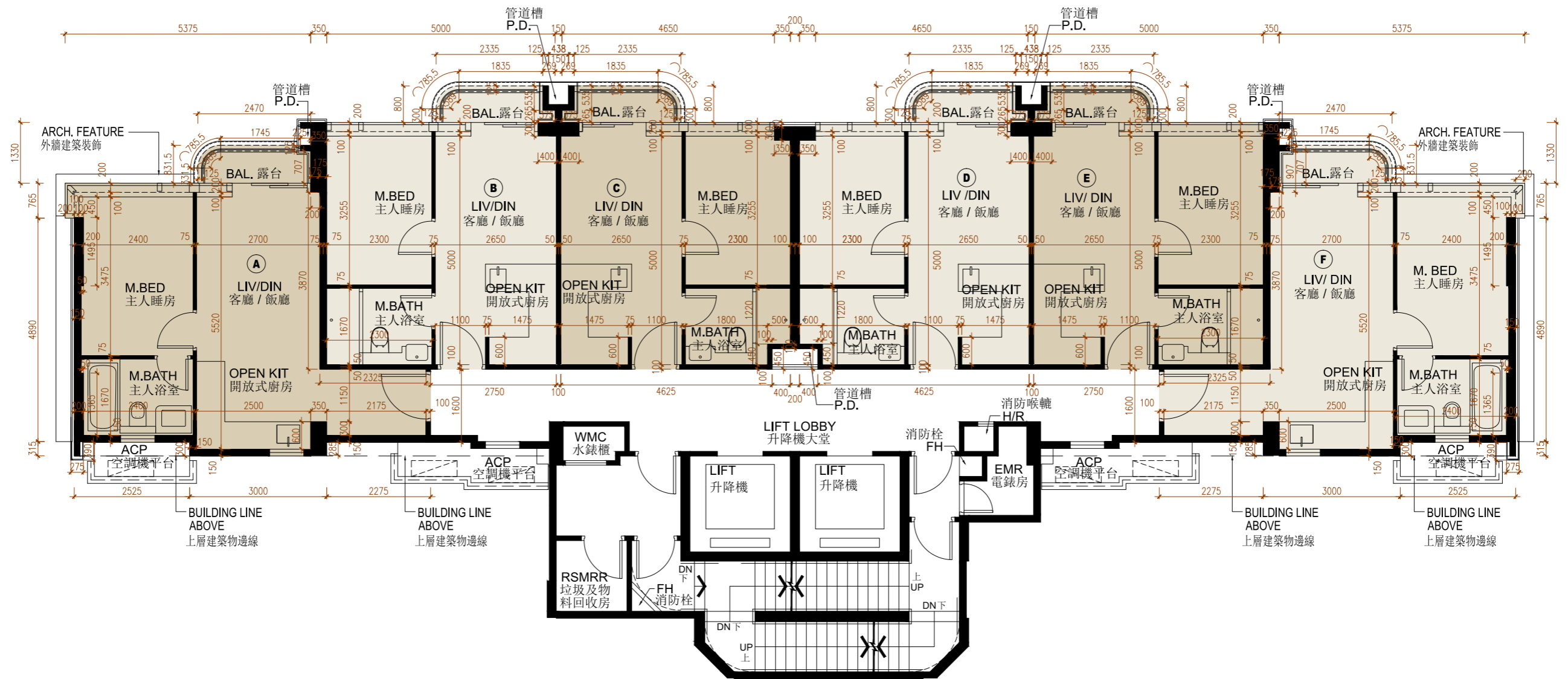


FLOOR PLANS OF RESIDENTIAL PROPERTIES IN THE DEVELOPMENT

發展項目的住宅物業的樓面平面圖

12/F
12樓



FLOOR PLANS OF RESIDENTIAL PROPERTIES IN THE DEVELOPMENT
發展項目的住宅物業的樓面平面圖

Floor 樓層	Flat 單位	The floor-to-floor height (refers to the height between the top surface of structural slab of a floor and the top surface of the structural slab of its immediate upper floor) of residential property (mm) 住宅物業的層與層之間的高度(指該樓層之石屎地台面與上層石屎地台面之高度距離) (毫米)	The thickness of floor slabs (excluding plaster) of residential property (mm) 住宅物業的樓板(不包括灰泥)的厚度(毫米)
12/F 12樓	A	2850, 3150, 3150*	150, 175, 500
	B	2800, 3100*, 3150, 3200*, 3450*	150, 175
	C	2800, 3150, 3450*, 3500*	
	D	2800, 3100*, 3150, 3450*, 3500*	
	E	2800, 3100*, 3150, 3200*, 3450*	
	F	2850, 3150, 3150*	150, 175, 500

*Inclusive of the thickness of mass concrete fill on sunken slab.

*包括跌級樓板上之混凝土填充層厚度。

Notes :

1. The internal ceiling height within residential properties may vary due to structural, architectural and/or decoration design variations.
2. The internal areas of the residential properties on the upper floors will generally be slightly larger than those on the lower floors because of the reducing thickness of the structural walls on the upper floors.
3. The dimensions in the floor plans are all structural dimensions in millimetre.

備註：

1. 住宅物業之天花高度將會因應其結構、建築及/或裝修設計上的差異而有所不同。
2. 因住宅物業的較高樓層的結構牆的厚度遞減，較高樓層的內部面積，一般比較低樓層的內部面積稍大。
3. 平面圖所列之數字為以毫米標示之建築結構尺寸。