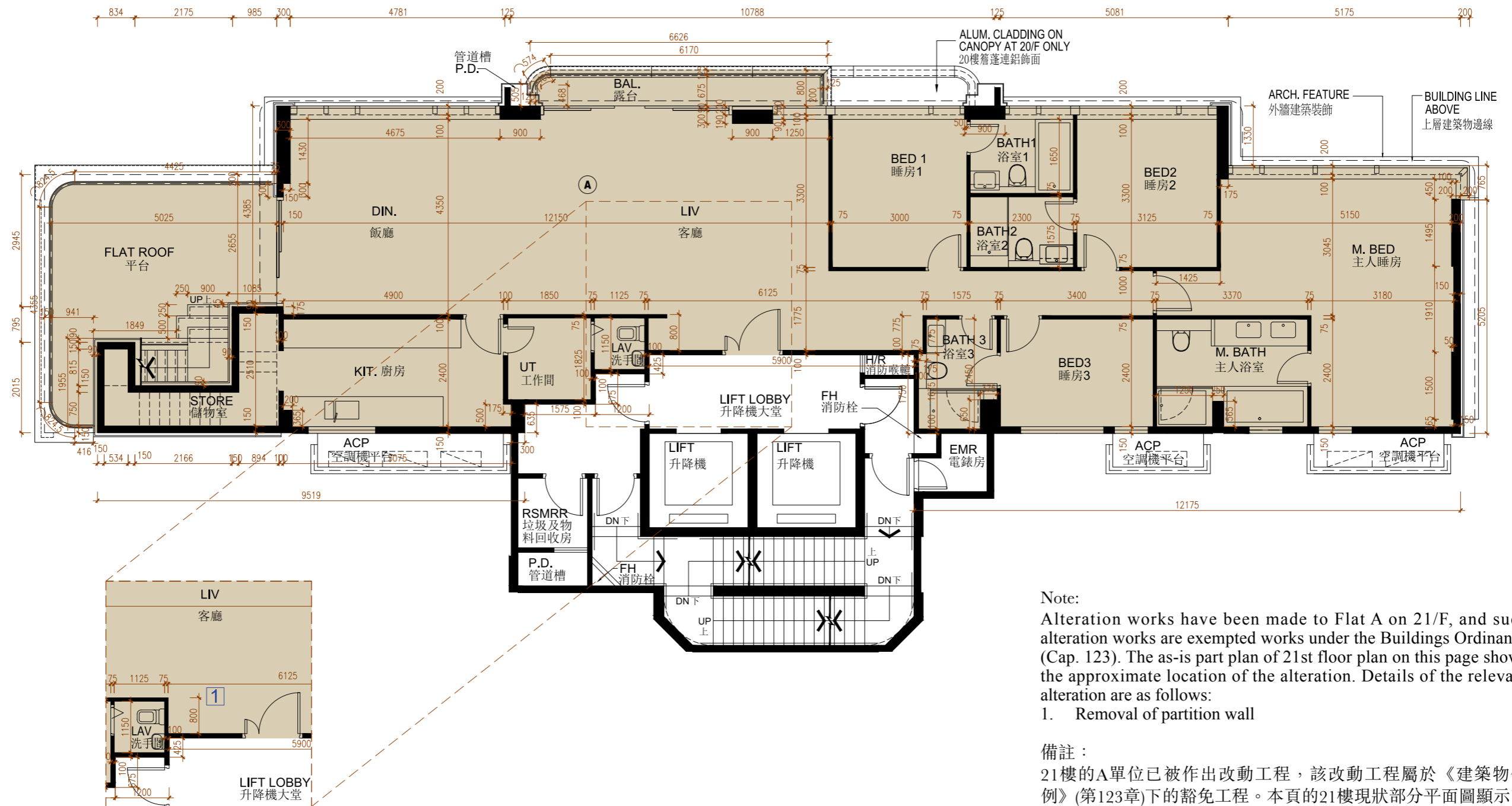


FLOOR PLANS OF RESIDENTIAL PROPERTIES IN THE DEVELOPMENT

發展項目的住宅物業的樓面平面圖

21/F
21樓



AS-IS PART PLAN OF 21/F
21樓現狀部分平面圖

Note:
Alteration works have been made to Flat A on 21/F, and such alteration works are exempted works under the Buildings Ordinance (Cap. 123). The as-is part plan of 21st floor plan on this page shows the approximate location of the alteration. Details of the relevant alteration are as follows:
1. Removal of partition wall

備註：
21樓的A單位已被作出改動工程，該改動工程屬於《建築物條例》(第123章)下的豁免工程。本頁的21樓現狀部分平面圖顯示改動的大約位置。有關改動的細節如下：
1. 移除間隔牆



FLOOR PLANS OF RESIDENTIAL PROPERTIES IN THE DEVELOPMENT
發展項目的住宅物業的樓面平面圖

Floor 樓層	Flat 單位	The floor-to-floor height (refers to the height between the top surface of structural slab of a floor and the top surface of the structural slab of its immediate upper floor) of residential property (mm) 住宅物業的層與層之間的高度(指該樓層之石屎地台面與上層石屎地台面之高度距離) (毫米)	The thickness of floor slabs (excluding plaster) of residential property (mm) 住宅物業的樓板(不包括灰泥)的厚度(毫米)
21/F 21樓	A	3500, 3650, 3800, 3800*, 3850*, 3900*, 4150*	150, 175

*Inclusive of the thickness of mass concrete fill on sunken slab.

*包括跌級樓板上之混凝土填充層厚度。

Notes :

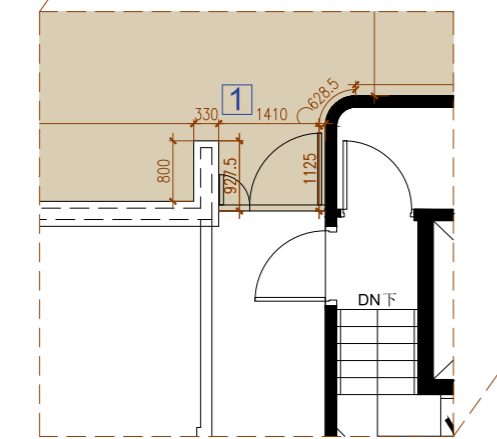
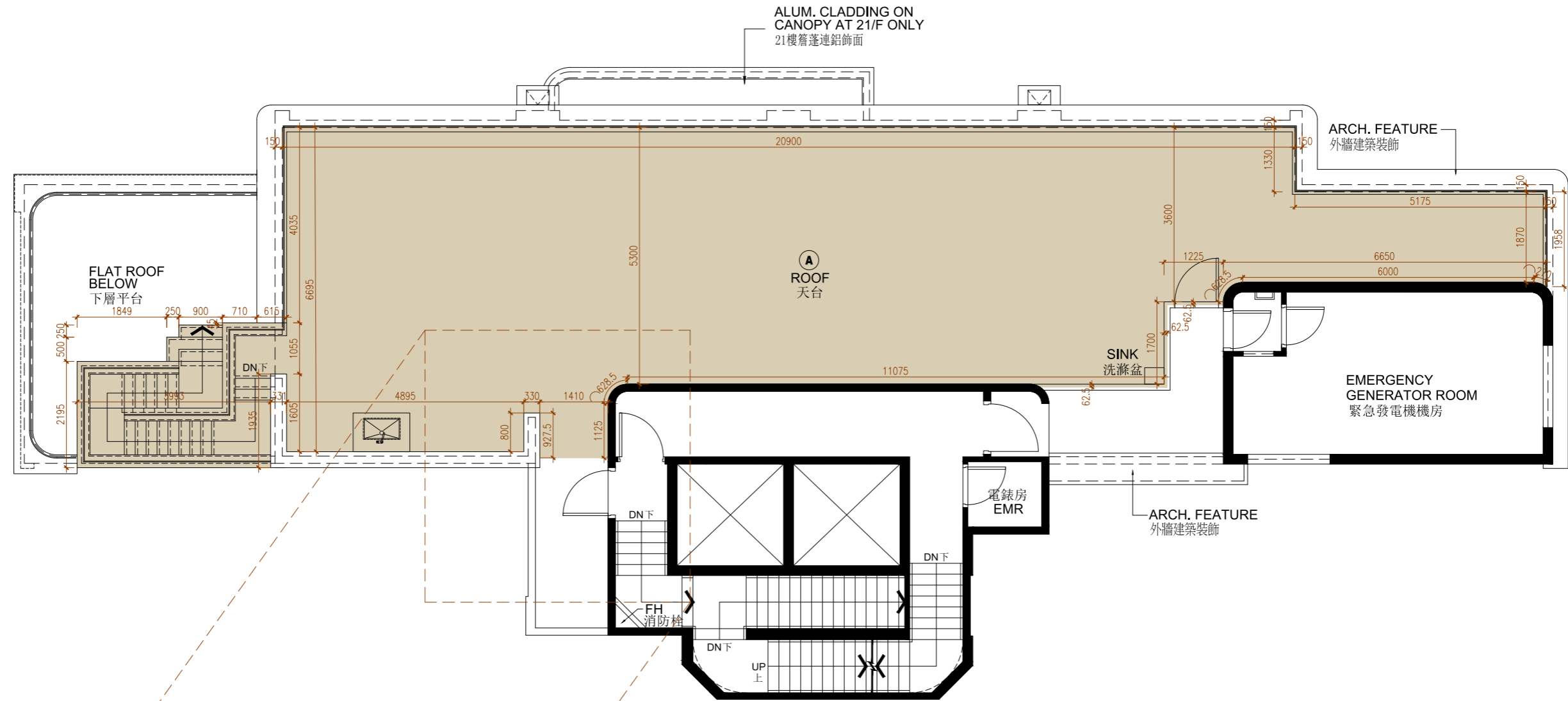
1. The internal ceiling height within residential properties may vary due to structural, architectural and/or decoration design variations.
2. The internal areas of the residential properties on the upper floors will generally be slightly larger than those on the lower floors because of the reducing thickness of the structural walls on the upper floors.
3. The dimensions in the floor plans are all structural dimensions in millimetre.

備註：

1. 住宅物業之天花高度將會因應其結構、建築及/或裝修設計上的差異而有所不同。
2. 因住宅物業的較高樓層的結構牆的厚度遞減，較高樓層的內部面積，一般比較低樓層的內部面積稍大。
3. 平面圖所列之數字為以毫米標示之建築結構尺寸。

FLOOR PLANS OF RESIDENTIAL PROPERTIES IN THE DEVELOPMENT
發展項目的住宅物業的樓面平面圖

ROOF
天台



AS-IS PART PLAN OF ROOF
天台現狀部分平面圖

Note:

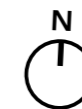
Alteration works have been made to the roof (forming part of Flat A on 21/F), and such alteration works are exempted works under the Buildings Ordinance (Cap. 123). The as-is part plan of roof on this page shows the approximate location of the alteration. Details of the relevant alteration are as follows:

1. Addition of Metal gate

備註：

天台(構成21樓的A單位的一部分)已被作出改動工程，該改動工程屬於《建築物條例》(第123章)下的豁免工程。本頁的天台現狀部分平面圖顯示改動的大約位置。有關改動的細節如下：

1. 增加金屬門



Scale: 0 5M/米
比例:

FLOOR PLANS OF RESIDENTIAL PROPERTIES IN THE DEVELOPMENT
發展項目的住宅物業的樓面平面圖

Floor 樓層	Flat 單位	The floor-to-floor height (refers to the height between the top surface of structural slab of a floor and the top surface of the structural slab of its immediate upper floor) of residential property (mm) 住宅物業的層與層之間的高度(指該樓層之石屎地台面與上層石屎地台面之高度距離)(毫米)	The thickness of floor slabs (excluding plaster) of residential property (mm) 住宅物業的樓板(不包括灰泥)的厚度(毫米)
ROOF 天台	A	Not Applicable 不適用	Not Applicable 不適用

Notes :

1. The internal ceiling height within residential properties may vary due to structural, architectural and/or decoration design variations.
2. The internal areas of the residential properties on the upper floors will generally be slightly larger than those on the lower floors because of the reducing thickness of the structural walls on the upper floors.
3. The dimensions in the floor plans are all structural dimensions in millimetre.

備註：

1. 住宅物業之天花高度將會因應其結構、建築及/或裝修設計上的差異而有所不同。
2. 因住宅物業的較高樓層的結構牆的厚度遞減，較高樓層的內部面積，一般比較低樓層的內部面積稍大。
3. 平面圖所列之數字為以毫米標示之建築結構尺寸。