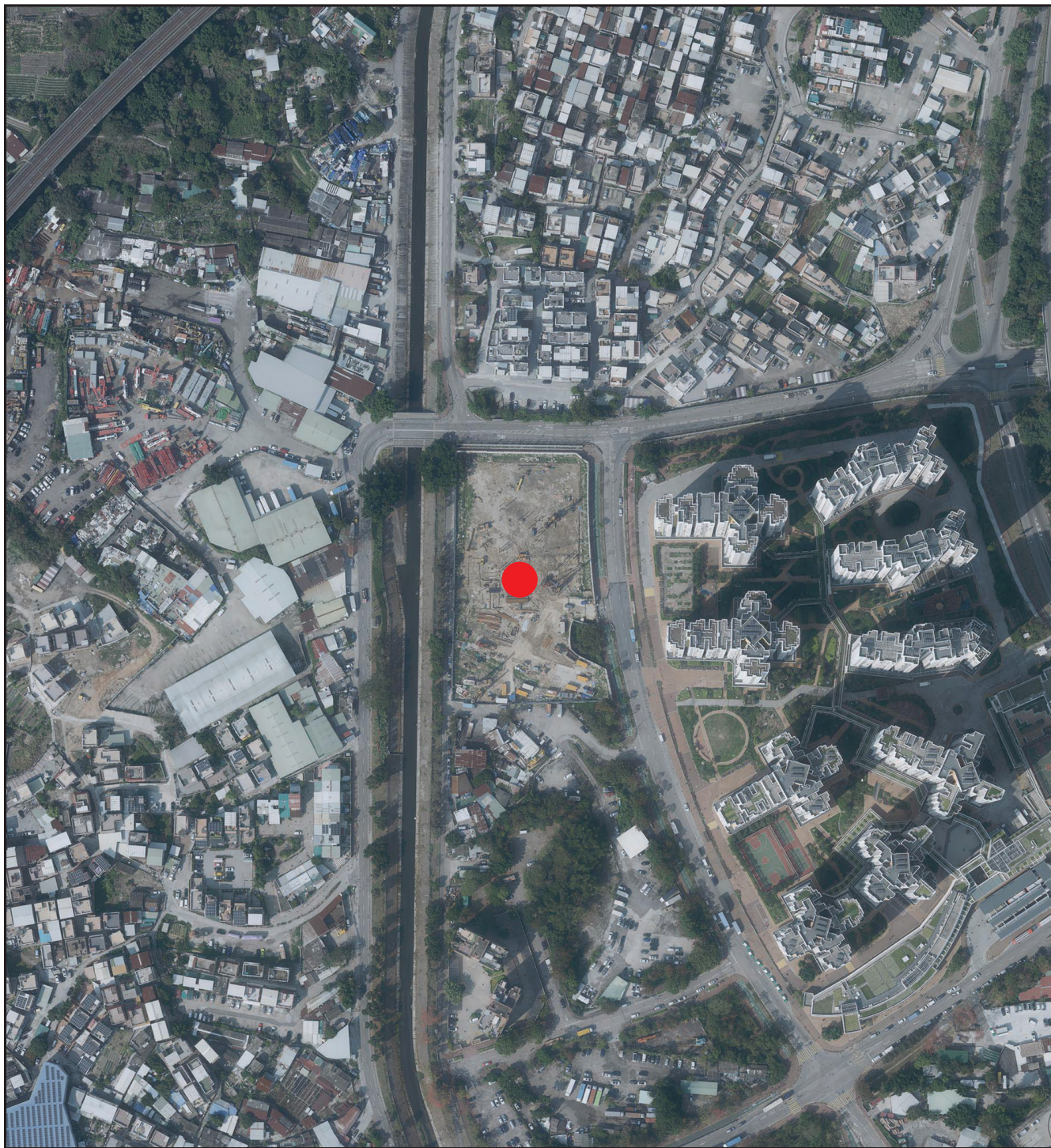


發展項目的鳥瞰照片 Aerial photograph of the development



摘錄自地政總署測繪處於2020年2月18日在6,900呎飛行高度拍攝之鳥瞰照片，編號為E089576C。
Extracted from the aerial photograph taken by the Survey and Mapping Office of Lands Department at a flying height of 6,900 feet, Photo No. E089576C, dated 18th February 2020.

香港特別行政區政府地政總署測繪處©版權所有，未經許可，不得複製。
Survey and Mapping Office, Lands Department, The Government of HKSAR ©Copyright reserved – reproduction by permission only.

● 發展項目的位置
Location of the development

備註 Notes :

因技術原因(例如發展項目之不規則形狀)，鳥瞰照片所顯示之範圍多於《一手住宅物業銷售條例》所要求顯示的範圍。

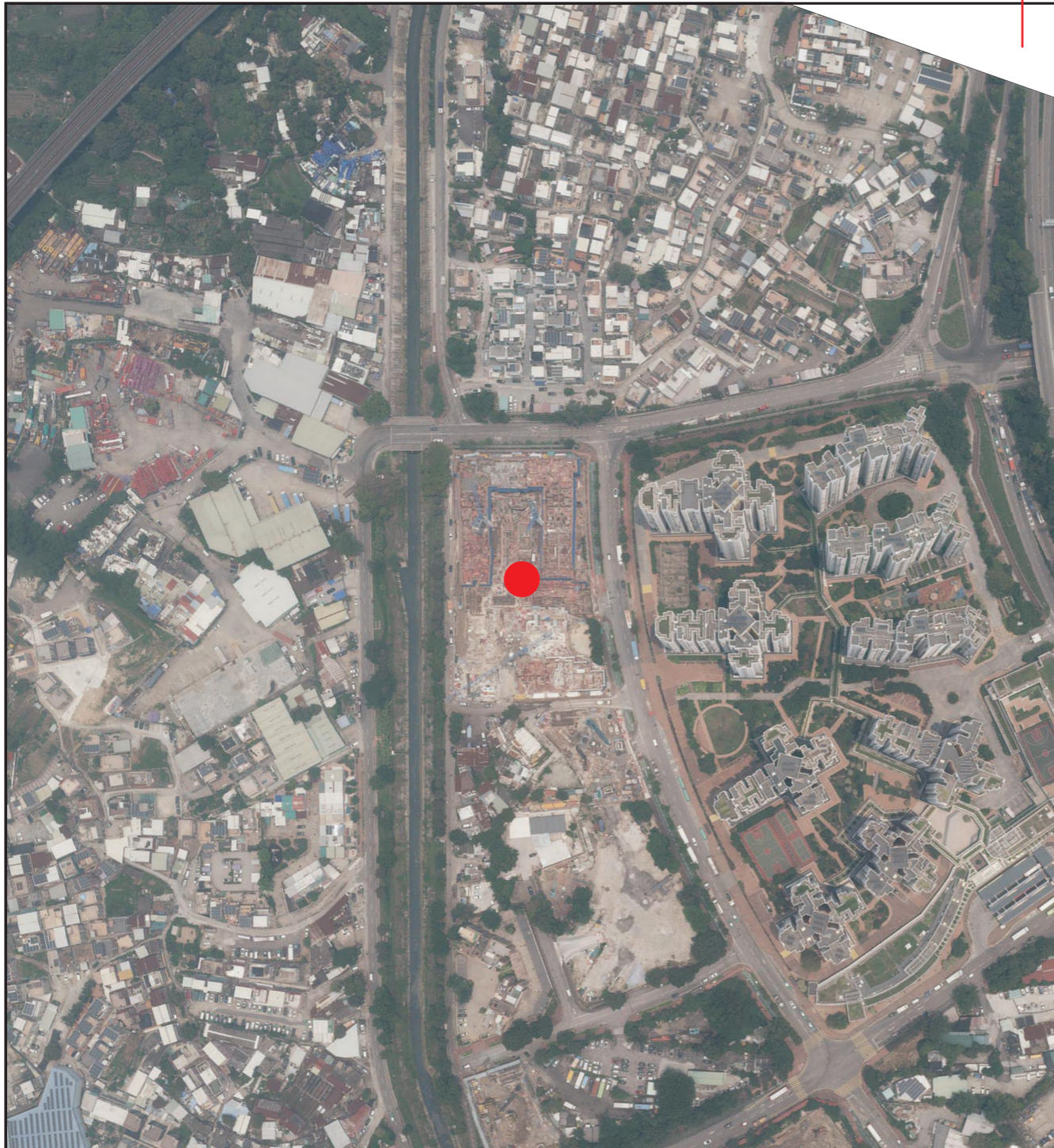
Due to technical reasons (such as the irregular shape of the Development), the aerial photograph has shown more than the area required under the Residential Properties (First-hand Sales) Ordinance.

賣方亦建議準買方到有關發展地盤作實地考察，以對該發展地盤、其周邊地區環境及附近的公共設施有較佳了解。

The Vendor also advises prospective purchasers to conduct an on-site visit for a better understanding of the development site, its surrounding environment and the public facilities nearby.

發展項目的鳥瞰照片 Aerial photograph of the development

鳥瞰照片並不覆蓋本空白範圍
This blank area falls outside the coverage of the aerial photograph



摘錄自地政總署測繪處於2021年7月24日在3,000呎飛行高度拍攝之鳥瞰照片，編號為E140494C。
Extracted from the aerial photograph taken by the Survey and Mapping Office of Lands Department at a flying height of 3,000 feet, Photo No. E140494C, dated 24th July 2021.

香港特別行政區政府地政總署測繪處©版權所有，未經許可，不得複製。
Survey and Mapping Office, Lands Department, The Government of HKSAR ©Copyright reserved – reproduction by permission only.

● 發展項目的位置
Location of the development

備註 Notes :

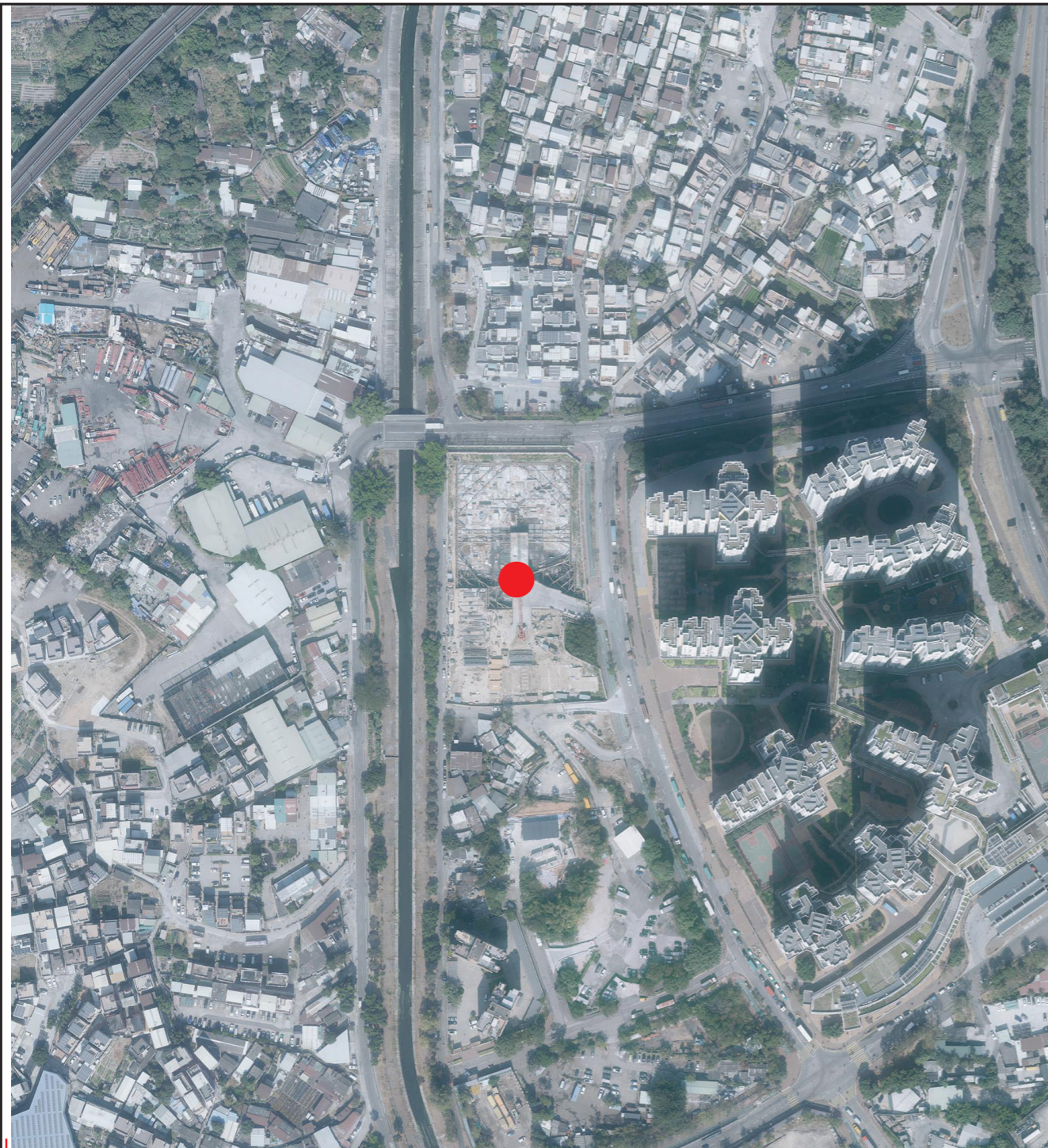
因技術原因 (例如發展項目之不規則形狀)，鳥瞰照片所顯示之範圍多於《一手住宅物業銷售條例》所要求顯示的範圍。

Due to technical reasons (such as the irregular shape of the Development), the aerial photograph has shown more than the area required under the Residential Properties (First-hand Sales) Ordinance.

賣方亦建議準買方到有關發展地盤作實地考察，以對該發展地盤、其周邊地區環境及附近的公共設施有較佳了解。

The Vendor also advises prospective purchasers to conduct an on-site visit for a better understanding of the development site, its surrounding environment and the public facilities nearby.

發展項目的鳥瞰照片 Aerial photograph of the development



摘錄自地政總署測繪處於2021年1月19日在6,900呎飛行高度拍攝之鳥瞰照片，編號為E132145C。
Extracted from the aerial photograph taken by the Survey and Mapping Office of Lands Department at a flying height of 6,900 feet, Photo No. E132145C dated 19th January 2021.

香港特別行政區政府地政總署測繪處©版權所有，未經許可，不得複製。
Survey and Mapping Office, Lands Department, The Government of HKSAR ©Copyright reserved – reproduction by permission only.

● 發展項目的位置
Location of the development

鳥瞰照片並不覆蓋本空白範圍
This blank area falls outside the coverage of the aerial photograph

備註 Notes :

因技術原因 (例如發展項目之不規則形狀)，鳥瞰照片所顯示之範圍多於《一手住宅物業銷售條例》所要求顯示的範圍。

Due to technical reasons (such as the irregular shape of the Development), the aerial photograph has shown more than the area required under the Residential Properties (First-hand Sales) Ordinance.

賣方亦建議準買方到有關發展地盤作實地考察，以對該發展地盤、其周邊地區環境及附近的公共設施有較佳了解。

The Vendor also advises prospective purchasers to conduct an on-site visit for a better understanding of the development site, its surrounding environment and the public facilities nearby.